

WOOD BROS. HOMES

Custom Touch Series

Two-car garage with sectional overhead door.

Concrete patios.

Wide selection of clay or concrete exterior brick.

Bronze painted anodized aluminum window frames.

Energy saving, insulated front doors with handle-set dead bolt locks.

Exterior weatherproof electrical outlets.

Wall-to-wall carpeting in living rooms, dining rooms, family rooms, game rooms, bedrooms and halls.

Decorator sheet vinyl flooring in kitchens, breakfast rooms, baths, entries and utility rooms.

Woodburning fireplace*

General Electric range with double ovens, one self-cleaning.

General Electric multi-cycle dishwasher.

General Electric, sound insulated food waste disposer.

Furniture-finished, all-wood cabinets.

Separate pantry.

Mar-proof kitchen counter tops in wide selection of colors.

Separate utility room with washer/dryer connections and 220V outlet.

Double stainless steel kitchen sinks.

Icemaker connection for refrigerator.

Single-action faucets in kitchens and baths.

Recessed vanity and hall lighting.

Cultured marble vanity tops in baths.

Spacious mirrors in all baths.

Chrome bath accessories.

Medicine cabinet – wood paneled.

Custom lighting fixtures (many recessed) in wide selection of styles.

Central heating and air-conditioning system.

Pre-wired telephone outlets.

Built-in antenna leads.

Family-sized hot water heater.

Smoke alarm.

Power vents.

Decorator wallcoverings in a large selection of styles and patterns.

*Gas log-lighter included in communities with dual energy sources.

In Wood Bros.' continuing effort to reduce maintenance and utility costs, skylights or other architectural items which can cause excess energy consumption have been eliminated. Wall and ceiling insulation has been installed to meet or exceed rigid government specifications.

Due to constant search for improvement, we reserve the right to modify the plans, exteriors or products without notice or obligation. Prices and terms are also subject to change without notice.

WOOD BROS. HOMES

Custom Design Series

Two-car garage with sectional overhead door.

Concrete patios.

Enclosed rear yard with six-foot wood fence.

Fully sodded front yard.

Wide selection of clay or concrete exterior brick.

Bronze painted anodized aluminum window frames.

Energy saving, insulated front doors with handle-set dead bolt locks.

Exterior weatherproof electrical outlets.

Decorator ceramic or clay tile entry foyer.

Wall-to-wall carpeting in living rooms, dining rooms, family rooms, game rooms, bedrooms and halls.

Decorator sheet vinyl flooring in kitchens, breakfast rooms, baths and utility rooms.

General Electric range with double ovens; one self-cleaning, one microwave.

General Electric, sound insulated food waste disposer.

Furniture-finished, all-wood cabinets.

Separate pantry.

Mar-proof kitchen counter tops in wide selection of colors.

Separate utility room with washer/dryer connections and 220V outlet.

Double stainless steel kitchen sinks.

Icemaker connection for refrigerator.

Single-action faucets in kitchen and baths.

Wet bar (some plans).

Recessed vanity and hall lighting.

Custom crown molding ceiling trims in dining rooms and master suites.

Woodburning fireplace*

Cultured marble vanity tops in all baths.

Spacious mirrors in all baths.

Chrome bath accessories.

Medicine cabinet – wood paneled.

Custom lighting fixtures (many recessed) in wide selection of styles.

Central heating and air-conditioning system.

Pre-wired telephone outlets.

Built-in antenna leads.

Family-sized hot water heater.

Smoke alarm.

Power vents.

Decorator wallcoverings in a large selection of styles and patterns.

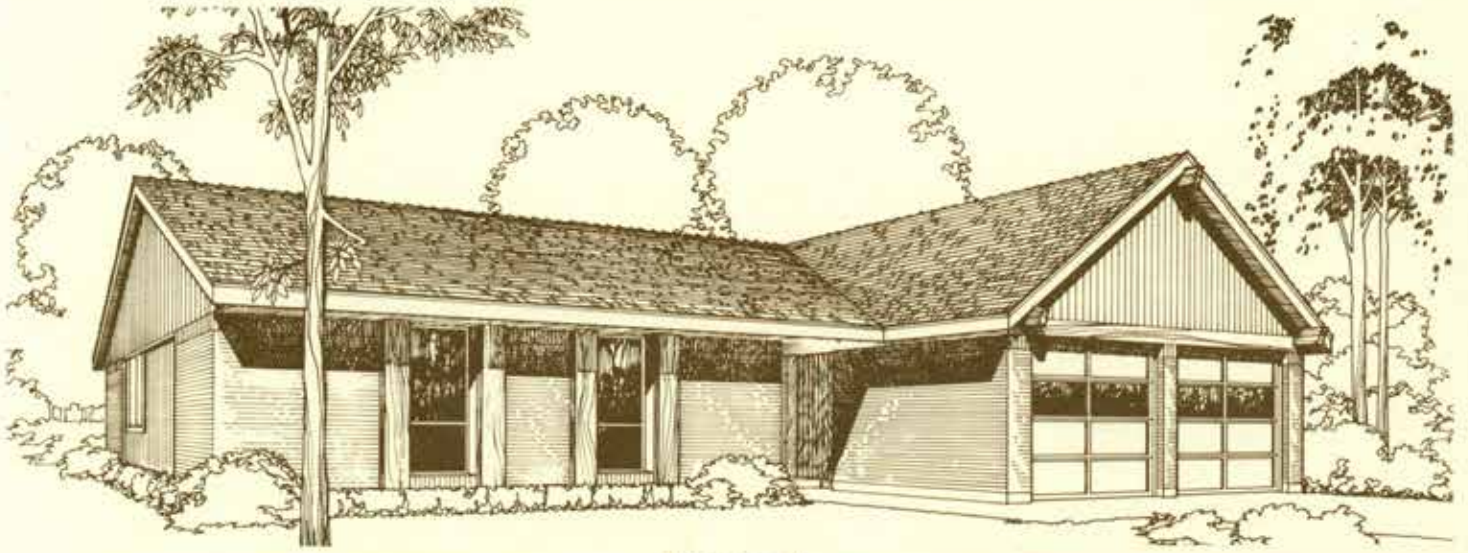
Lever action interior door handles.

*Gas log-lighter included in communities with dual energy sources.

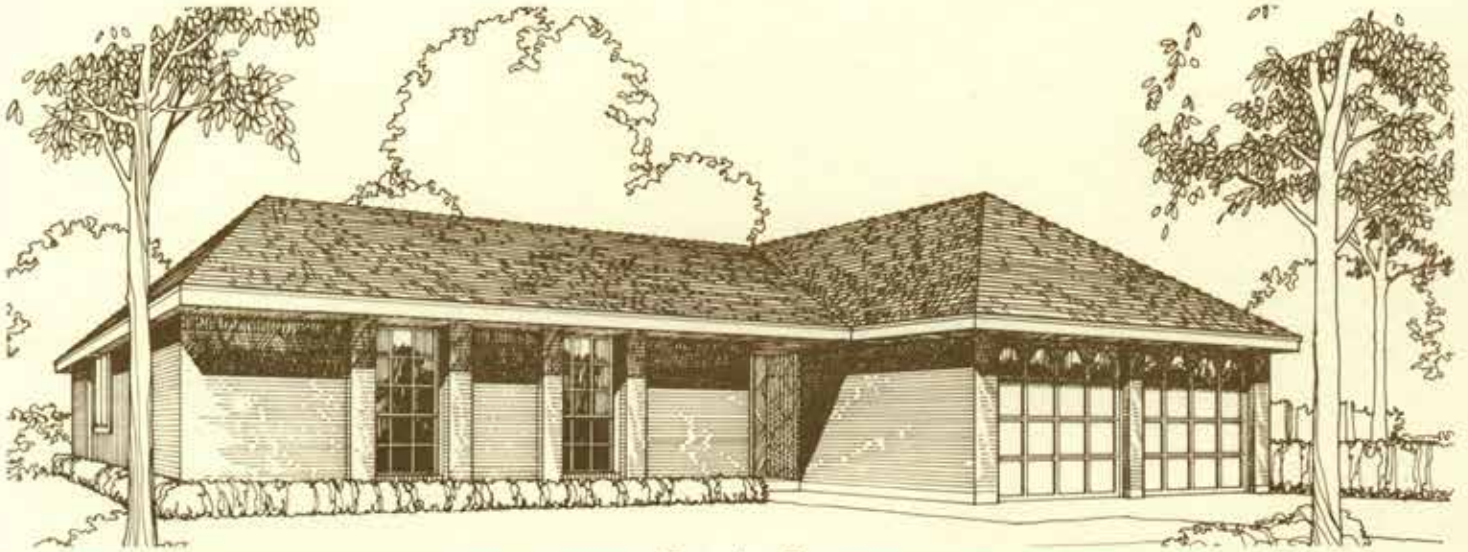
In Wood Bros.' continuing effort to reduce maintenance and utility costs, skylights or other architectural items which can cause excess energy consumption have been eliminated. Wall and ceiling insulation has been installed to meet or exceed rigid government specifications.

Due to constant search for improvement, we reserve the right to modify the plans, exteriors or products without notice or obligation. Prices and terms are also subject to change without notice.

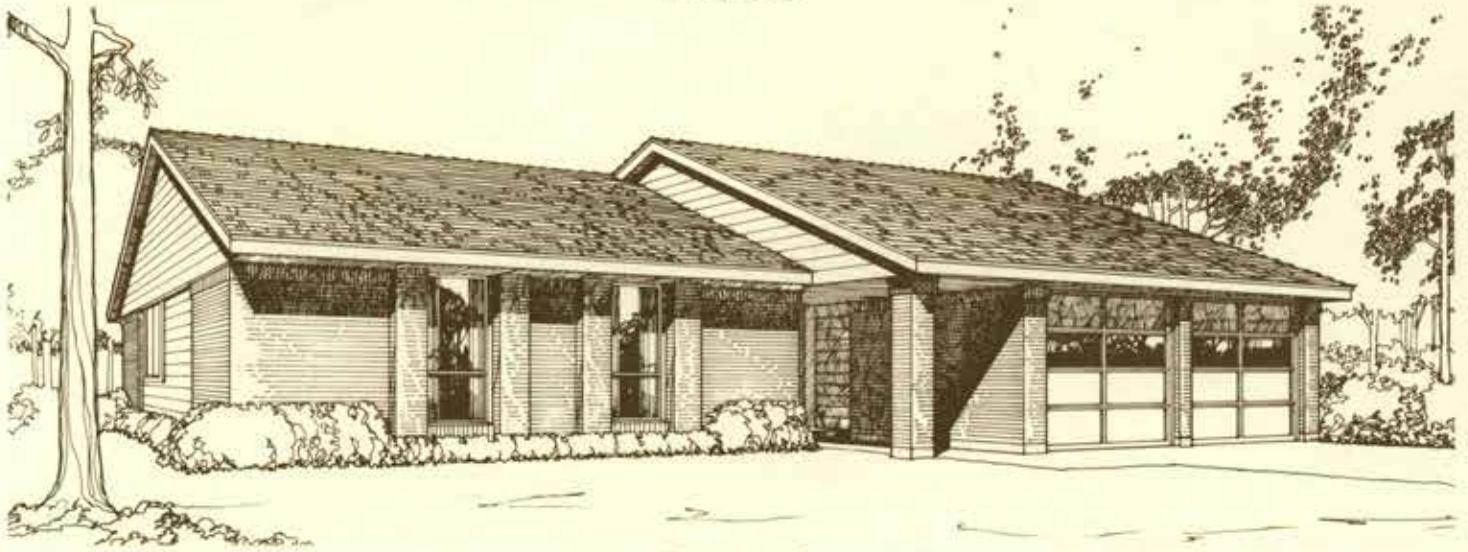
ABERDEEN



Exterior A

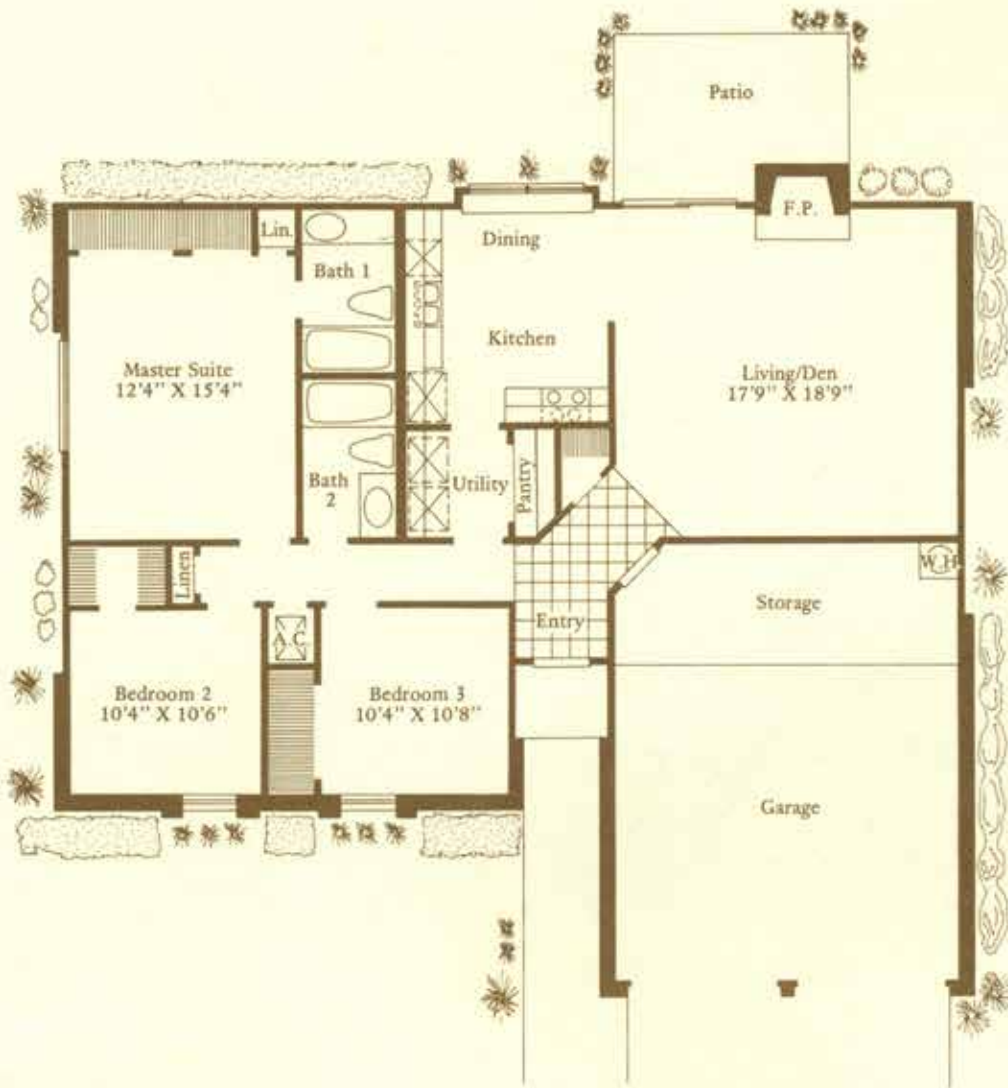


Exterior B



Exterior C

PLAN 430



Architectural dimensions shown. Product and specifications subject to change.
© Wood Bros., 1978.

1. Renderings of exterior designs are artist conceptions and may vary slightly from the actual home.
2. Floor plan room sizes are approximate and may vary slightly.
3. Window locations, sizes and numbers will differ with exterior design.
4. Certain lot conditions may require a home to be built in reverse of plan shown.
5. Trees and shrubs shown are artist's rendering and not included in price of home.
6. Vaulted ceilings and fireplaces may differ with exterior design.

DARTMOOR



Exterior A

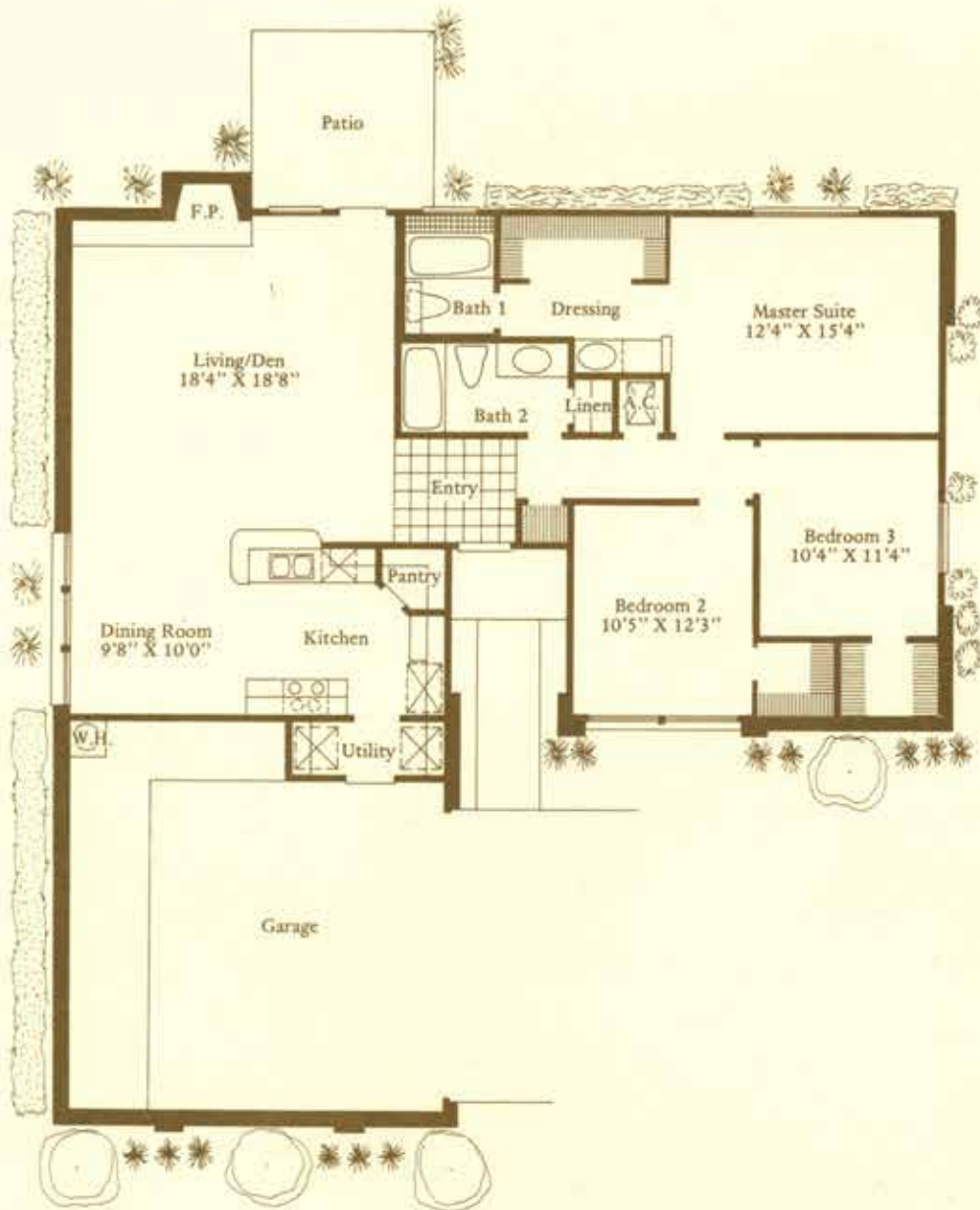


Exterior B



Exterior C

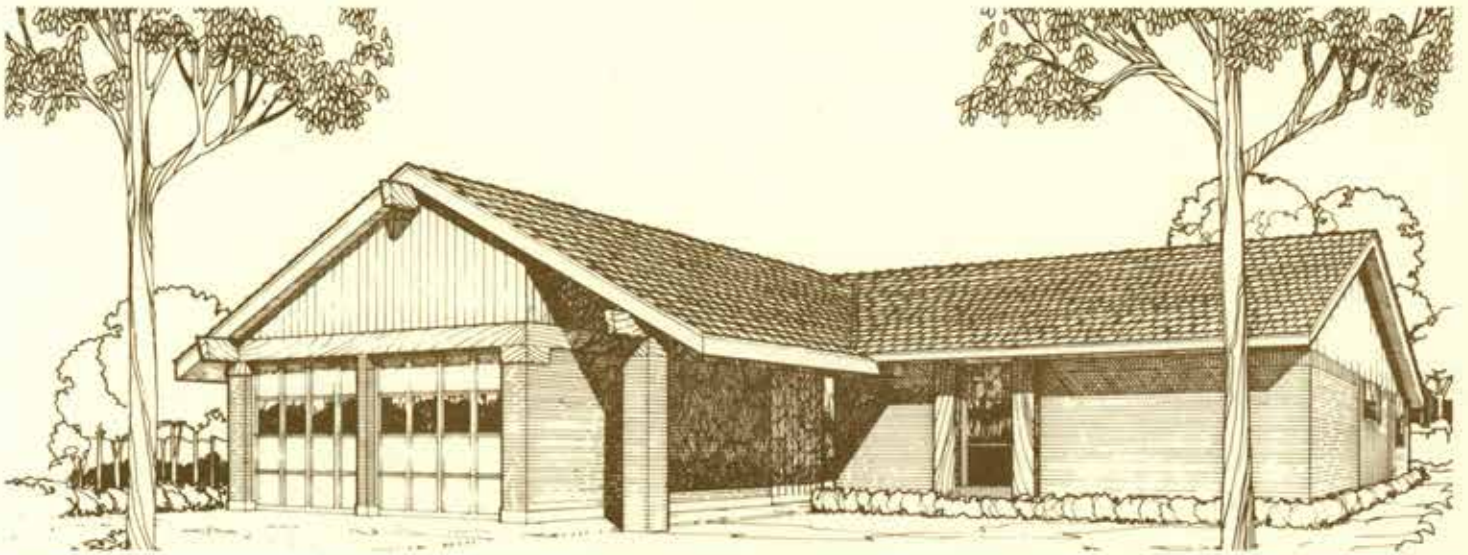
PLAN 431



Architectural dimensions shown. Product and specifications subject to change.
© Wood Bros., 1978

1. Renderings of exterior designs are artist conceptions and may vary slightly from the actual home.
2. Floor plan room sizes are approximate and may vary slightly.
3. Window locations, sizes and numbers will differ with exterior design.
4. Certain lot conditions may require a home to be built in reverse of plan shown.
5. Trees and shrubs shown are artist's rendering and not included in price of home.
6. Vaulted ceilings and fireplaces may differ with exterior design.

BERKSHIRE



Exterior A

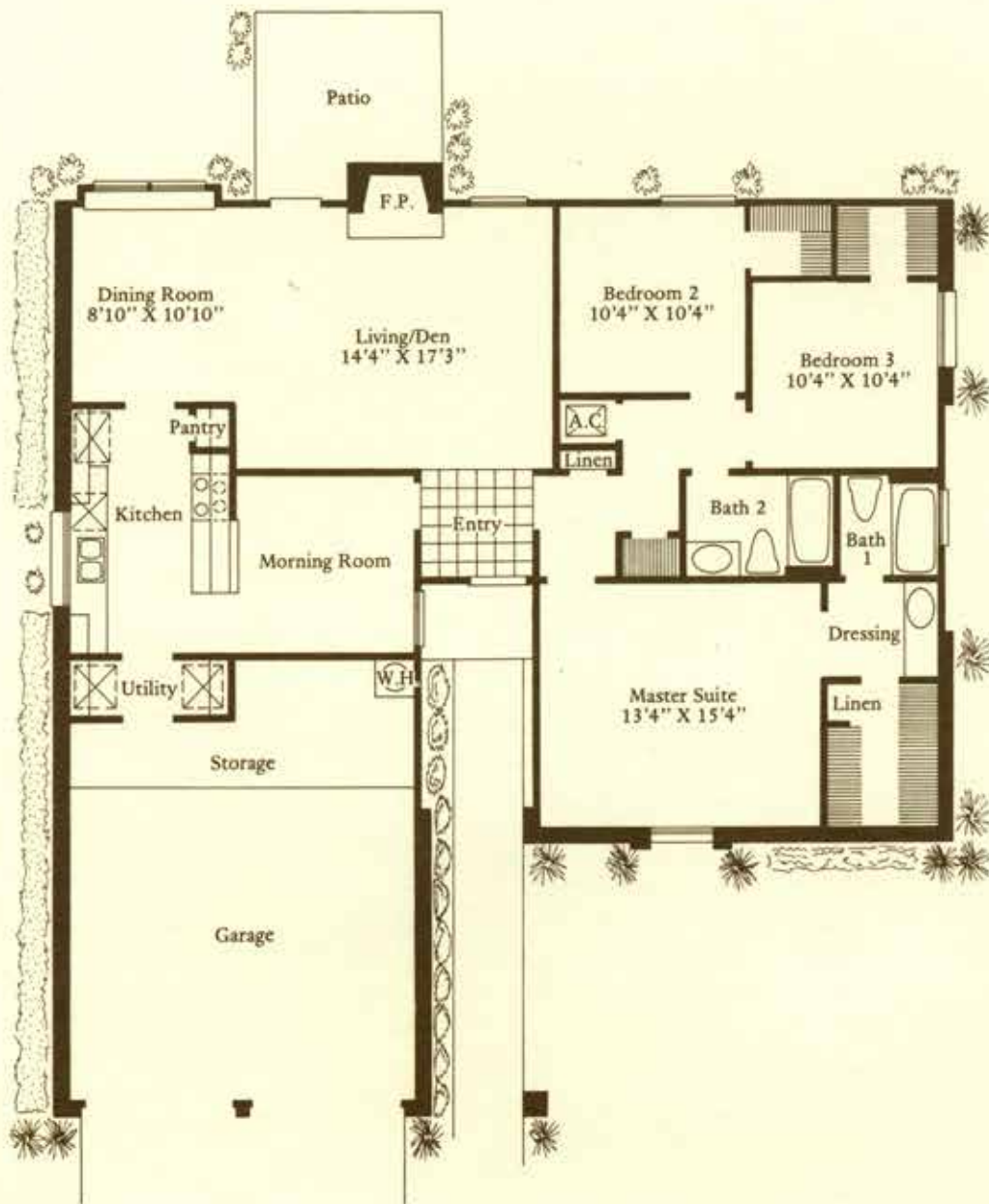


Exterior B



Exterior C

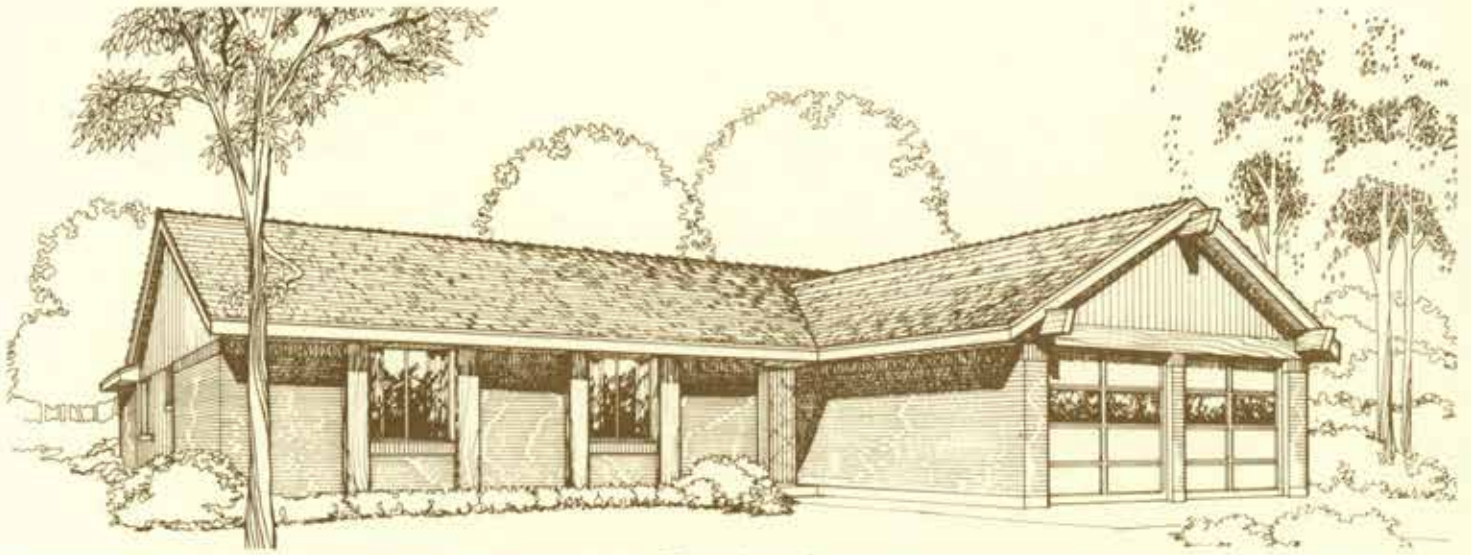
PLAN 432



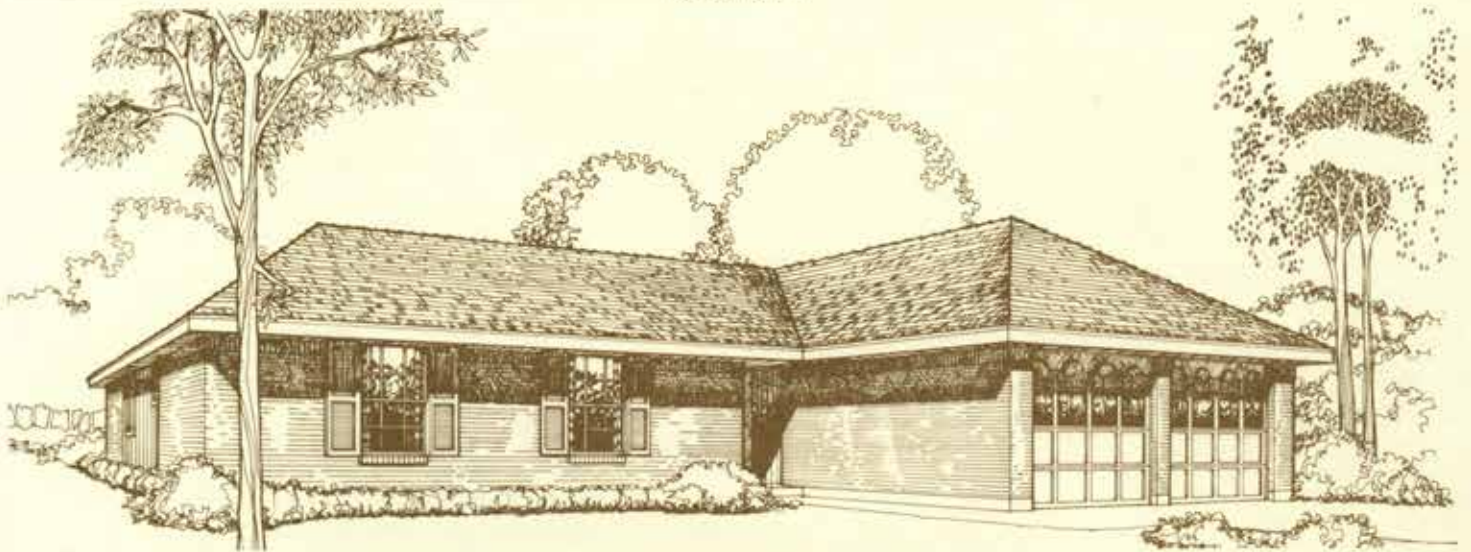
Architectural dimensions shown. Product and specifications subject to change.
© Wood Bros., 1978

1. Renderings of exterior designs are artist conceptions and may vary slightly from the actual home.
2. Floor plan room sizes are approximate and may vary slightly.
3. Window locations, sizes and numbers will differ with exterior design.
4. Certain lot conditions may require a home to be built in reverse of plan shown.
5. Trees and shrubs shown are artist's rendering and not included in price of home.
6. Vaulted ceilings and fireplaces may differ with exterior design.

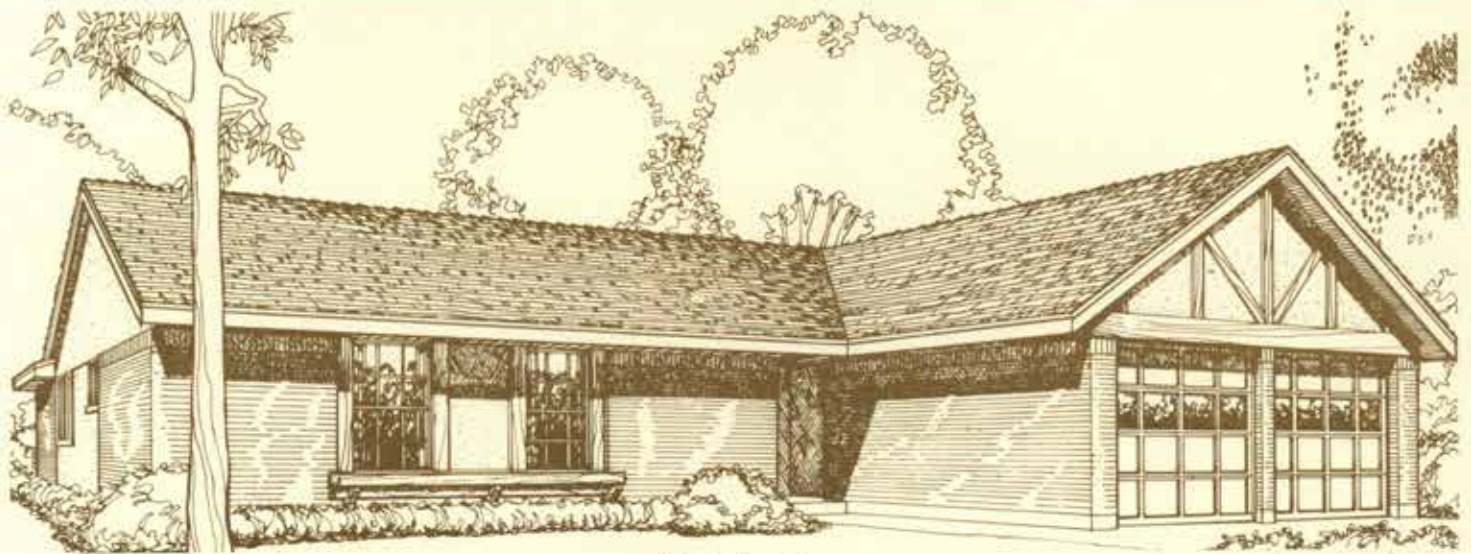
CABOT



Exterior A

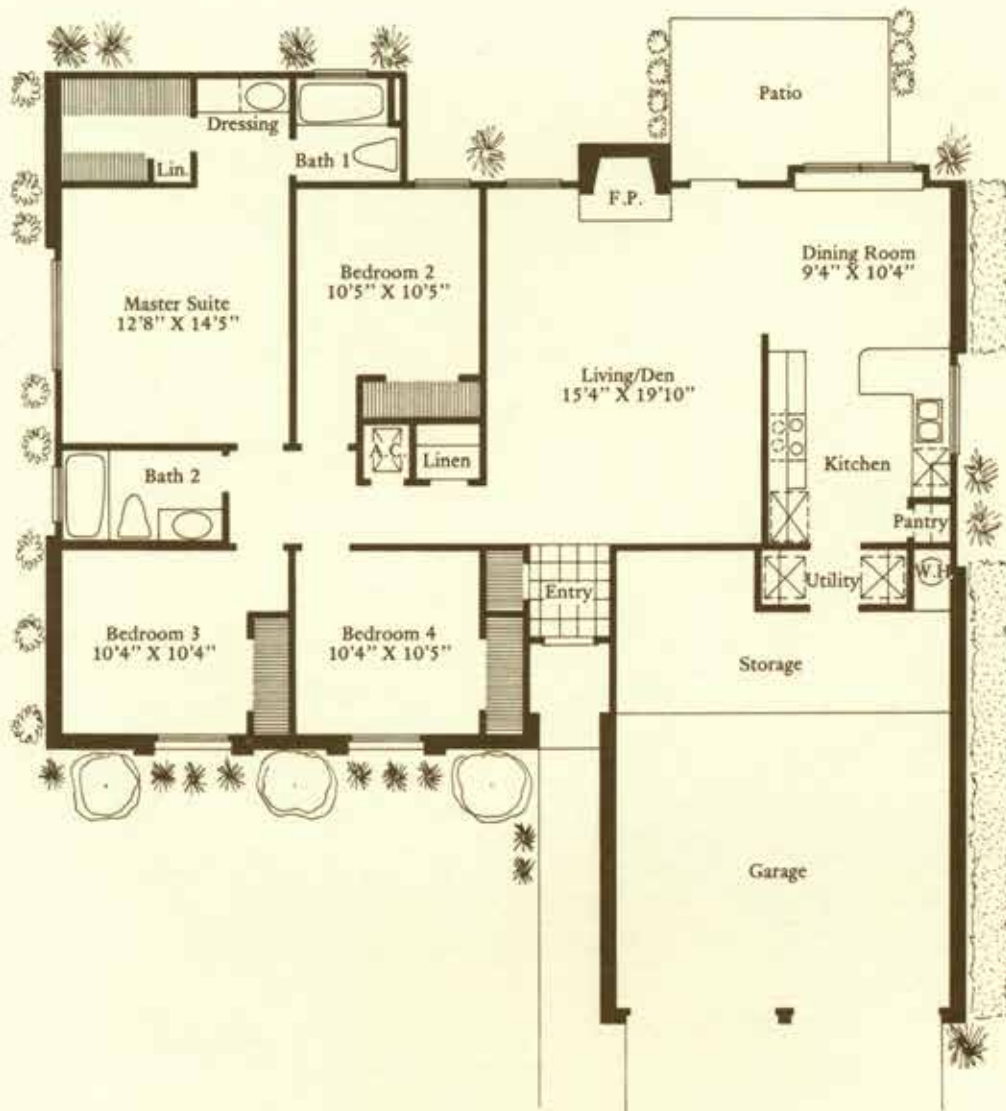


Exterior B



Exterior C

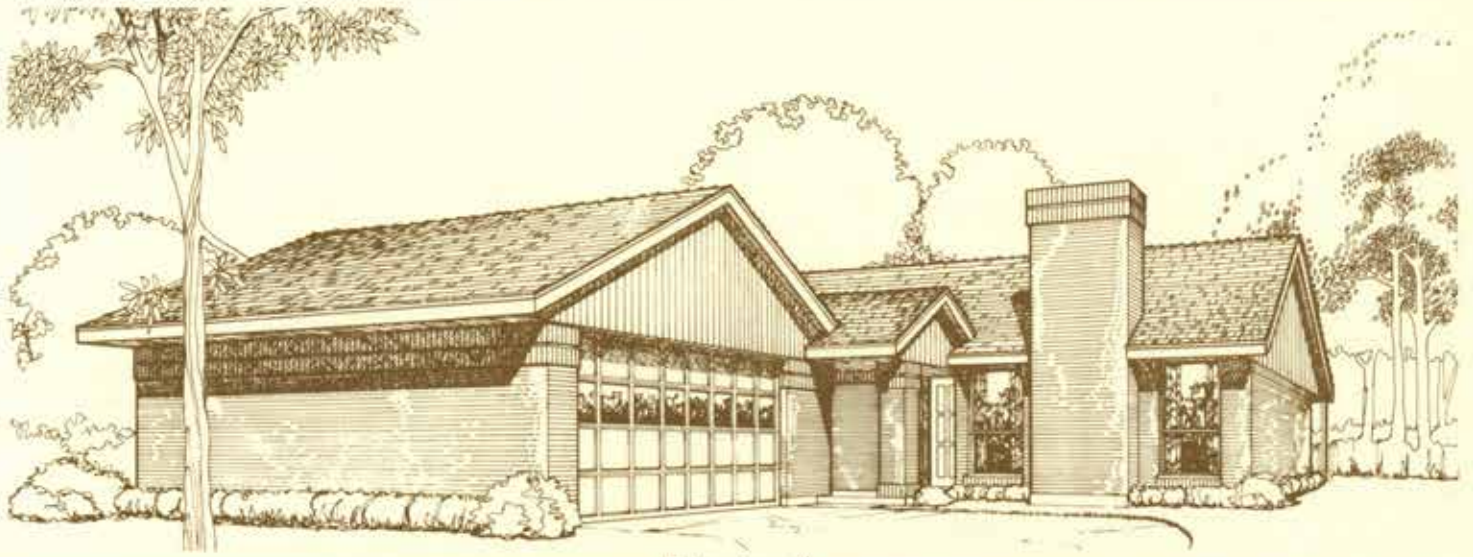
PLAN 433



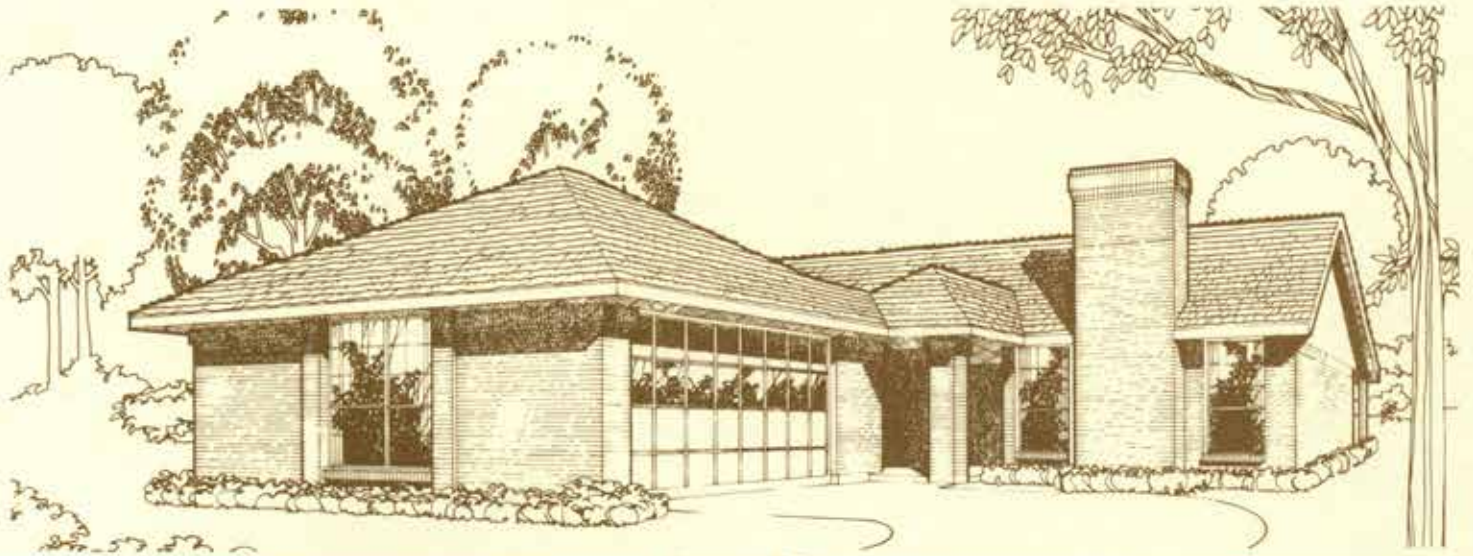
Architectural dimensions shown. Product and specifications subject to change.
© Wood Bros., 1978

1. Renderings of exterior designs are artist conceptions and may vary slightly from the actual home.
2. Floor plan room sizes are approximate and may vary slightly.
3. Window locations, sizes and numbers will differ with exterior design.
4. Certain lot conditions may require a home to be built in reverse of plan shown.
5. Trees and shrubs shown are artist's rendering and not included in price of home.
6. Vaulted ceilings and fireplaces may differ with exterior design.

WEXFORD



Exterior A

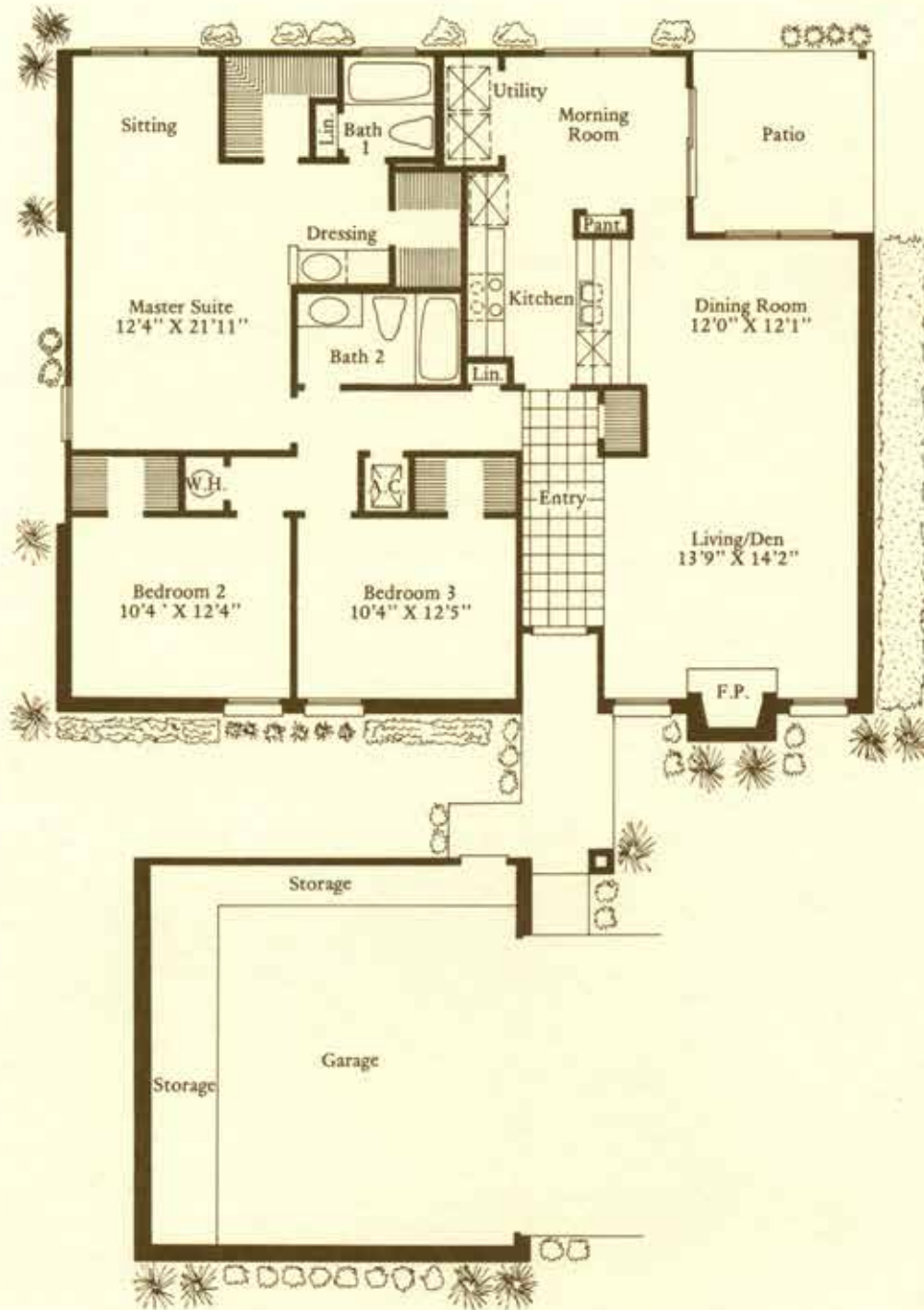


Exterior B



Exterior C

PLAN 434



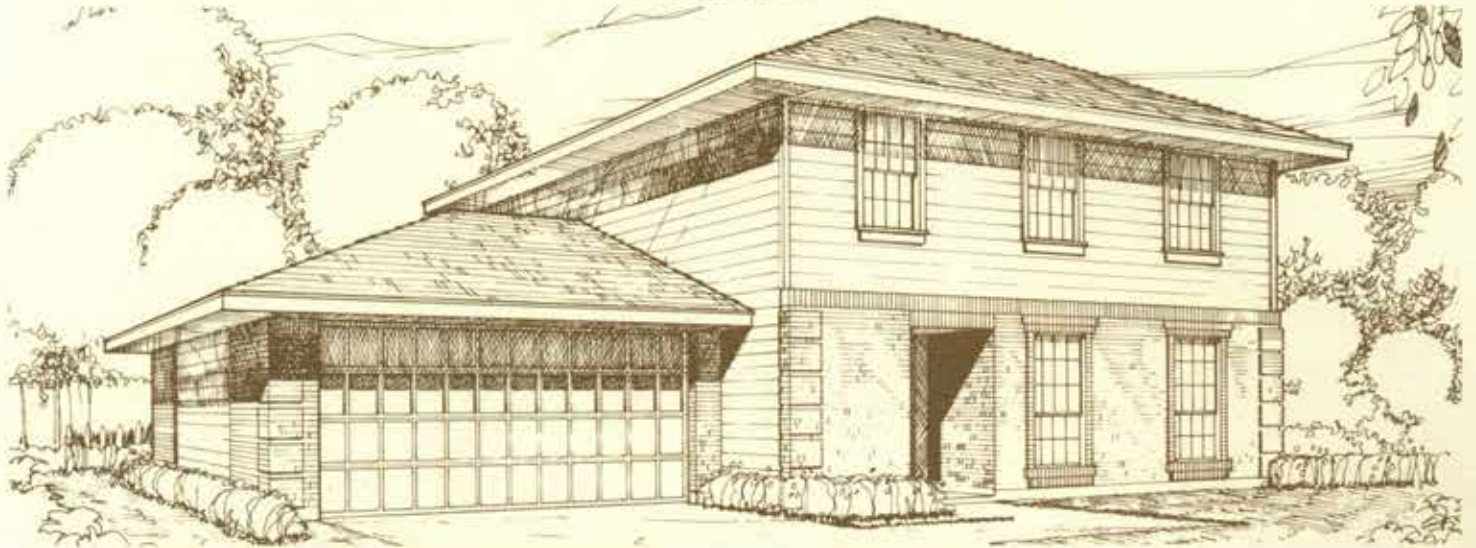
Architectural dimensions shown. Product and specifications subject to change.
© Wood Bros., 1978

1. Renderings of exterior designs are artist conceptions and may vary slightly from the actual home.
2. Floor plan room sizes are approximate and may vary slightly.
3. Window locations, sizes and numbers will differ with exterior design.
4. Certain lot conditions may require a home to be built in reverse of plan shown.
5. Trees and shrubs shown are artist's rendering and not included in price of home.
6. Vaulted ceilings and fireplaces may differ with exterior design.

STRATFORD



Exterior A

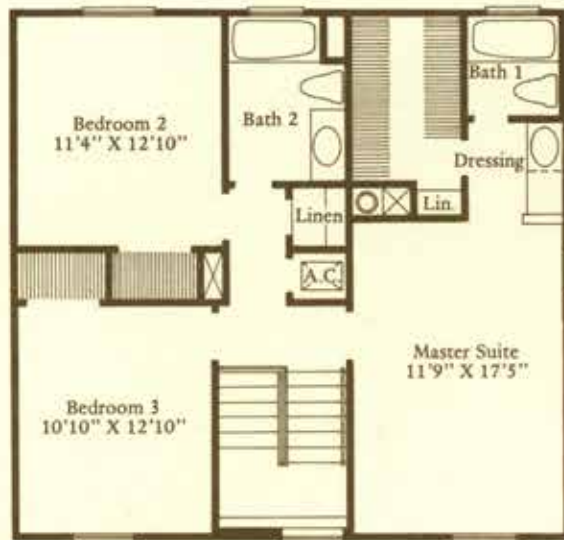


Exterior B

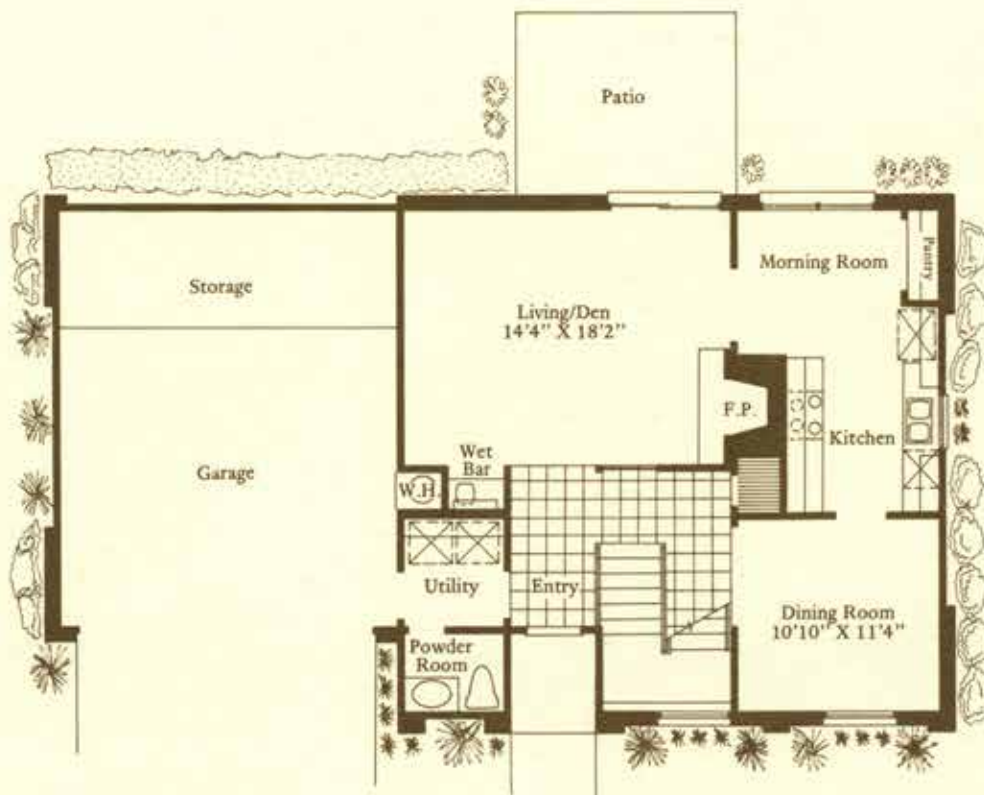


Exterior C

PLAN 436



Second Floor



Architectural dimensions shown. Product and specifications subject to change.
 © Wood Bros., 1978

1. Renderings of exterior designs are artist conceptions and may vary slightly from the actual home.
2. Floor plan room sizes are approximate and may vary slightly.
3. Window locations, sizes and numbers will differ with exterior design.
4. Certain lot conditions may require a home to be built in reverse of plan shown.
5. Trees and shrubs shown are artist's rendering and not included in price of home.
6. Vaulted ceilings and fireplaces may differ with exterior design.

HANOVER



Exterior A

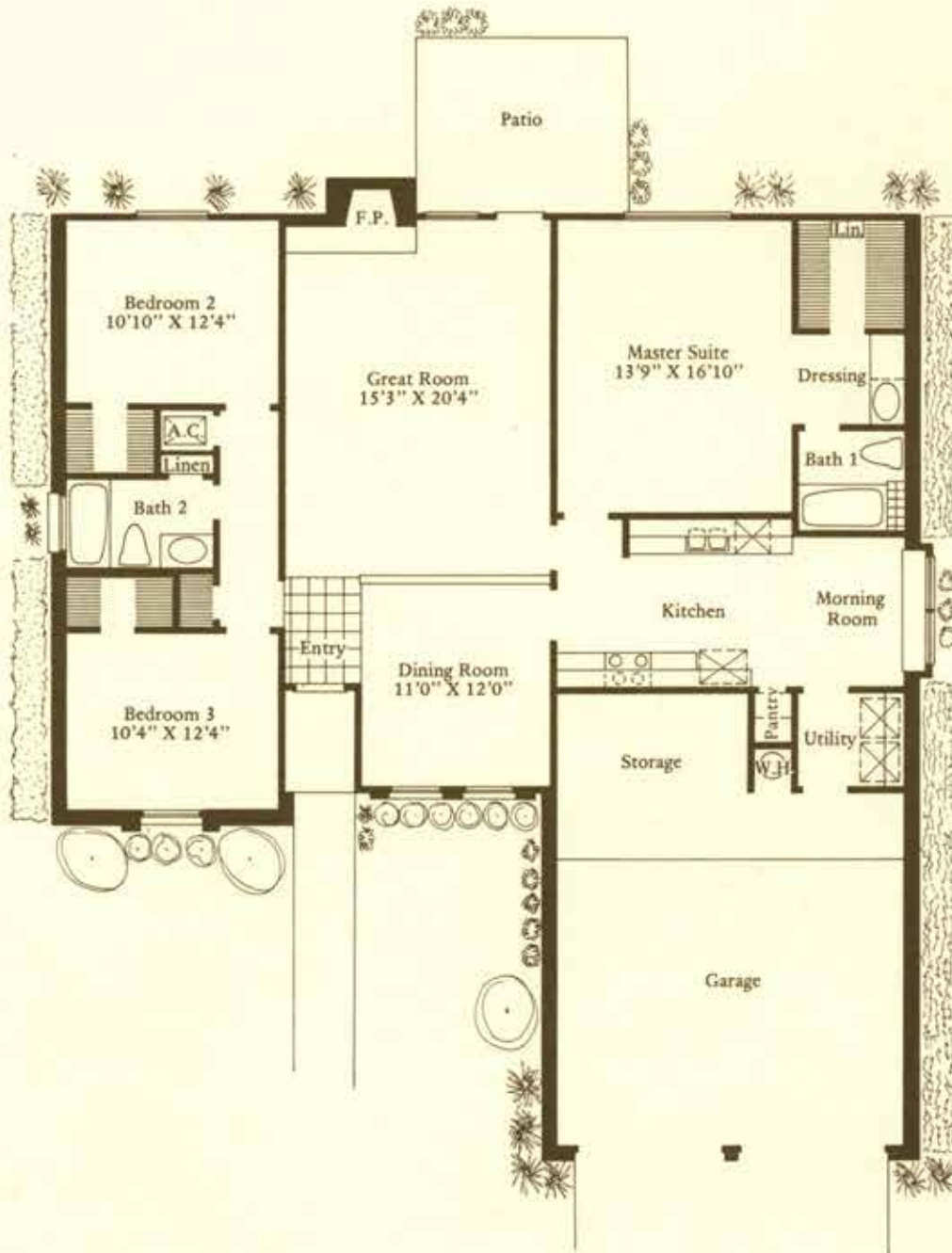


Exterior B



Exterior C

PLAN 330



Architectural dimensions shown. Product and specifications subject to change.
© Wood Bros., 1978

1. Renderings of exterior designs are artist conceptions and may vary slightly from the actual home.
2. Floor plan room sizes are approximate and may vary slightly.
3. Window locations, sizes and numbers will differ with exterior design.
4. Certain lot conditions may require a home to be built in reverse of plan shown.
5. Trees and shrubs shown are artist's rendering and not included in price of home.
6. Vaulted ceilings and fireplaces may differ with exterior design.

MILFORD



Exterior A

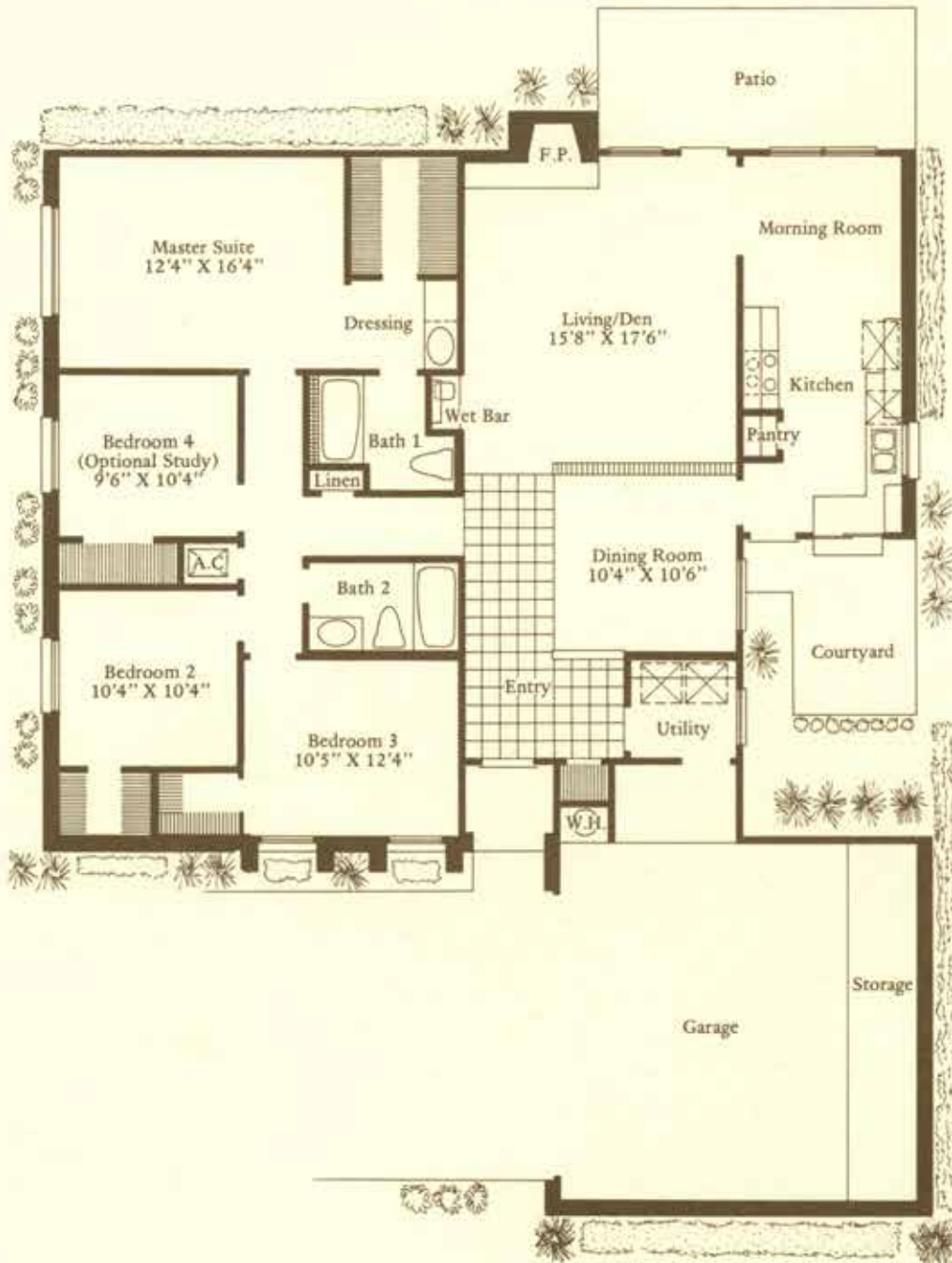


Exterior B



Exterior C

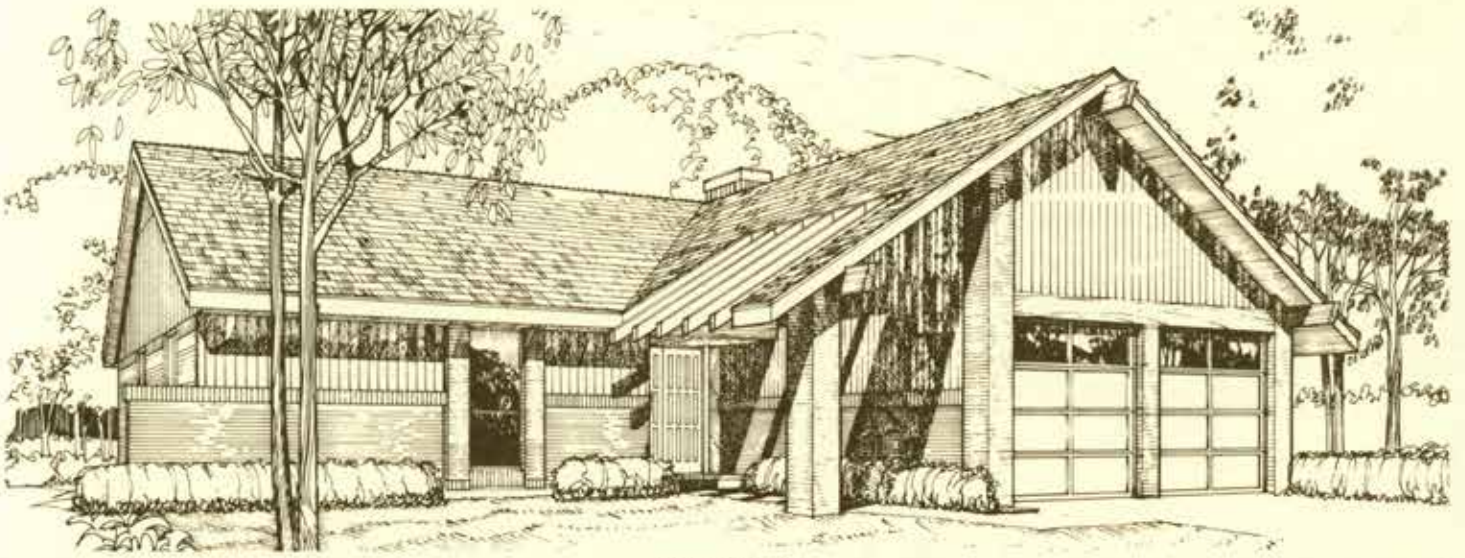
PLAN 332



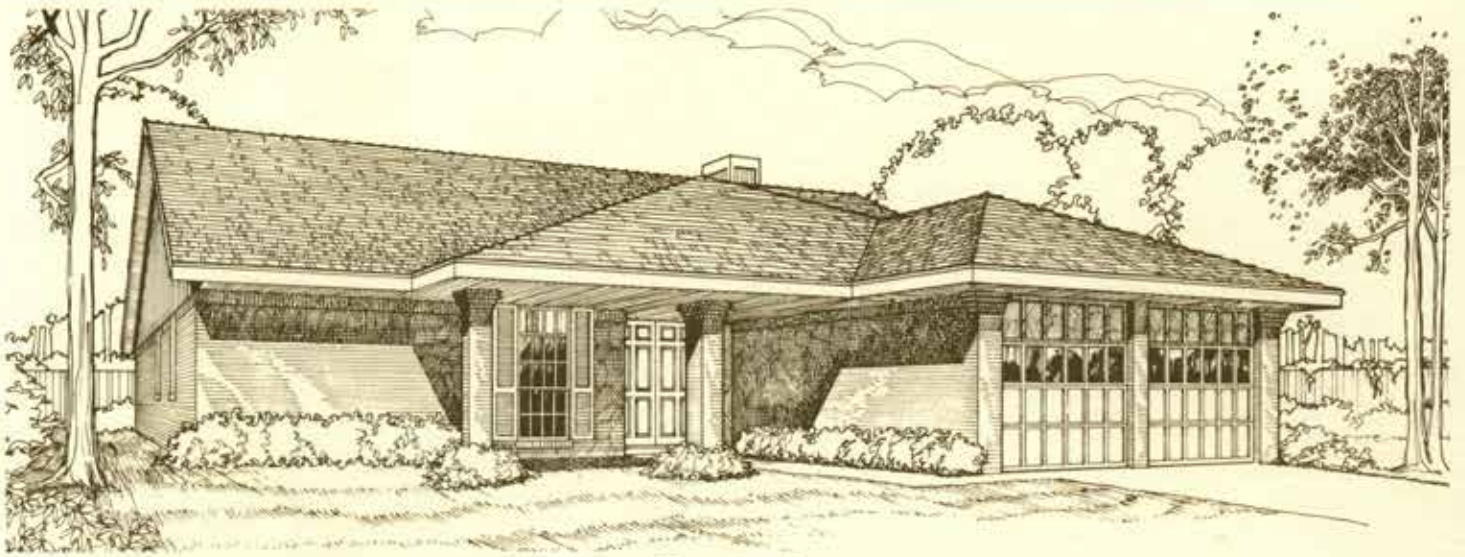
Architectural dimensions shown. Product and specifications subject to change.
© Wood Bros., 1978

1. Renderings of exterior designs are artist conceptions and may vary slightly from the actual home.
2. Floor plan room sizes are approximate and may vary slightly.
3. Window locations, sizes and numbers will differ with exterior design.
4. Certain lot conditions may require a home to be built in reverse of plan shown.
5. Trees and shrubs shown are artist's rendering and not included in price of home.
6. Vaulted ceilings and fireplaces may differ with exterior design.

HAMPTON



Exterior A

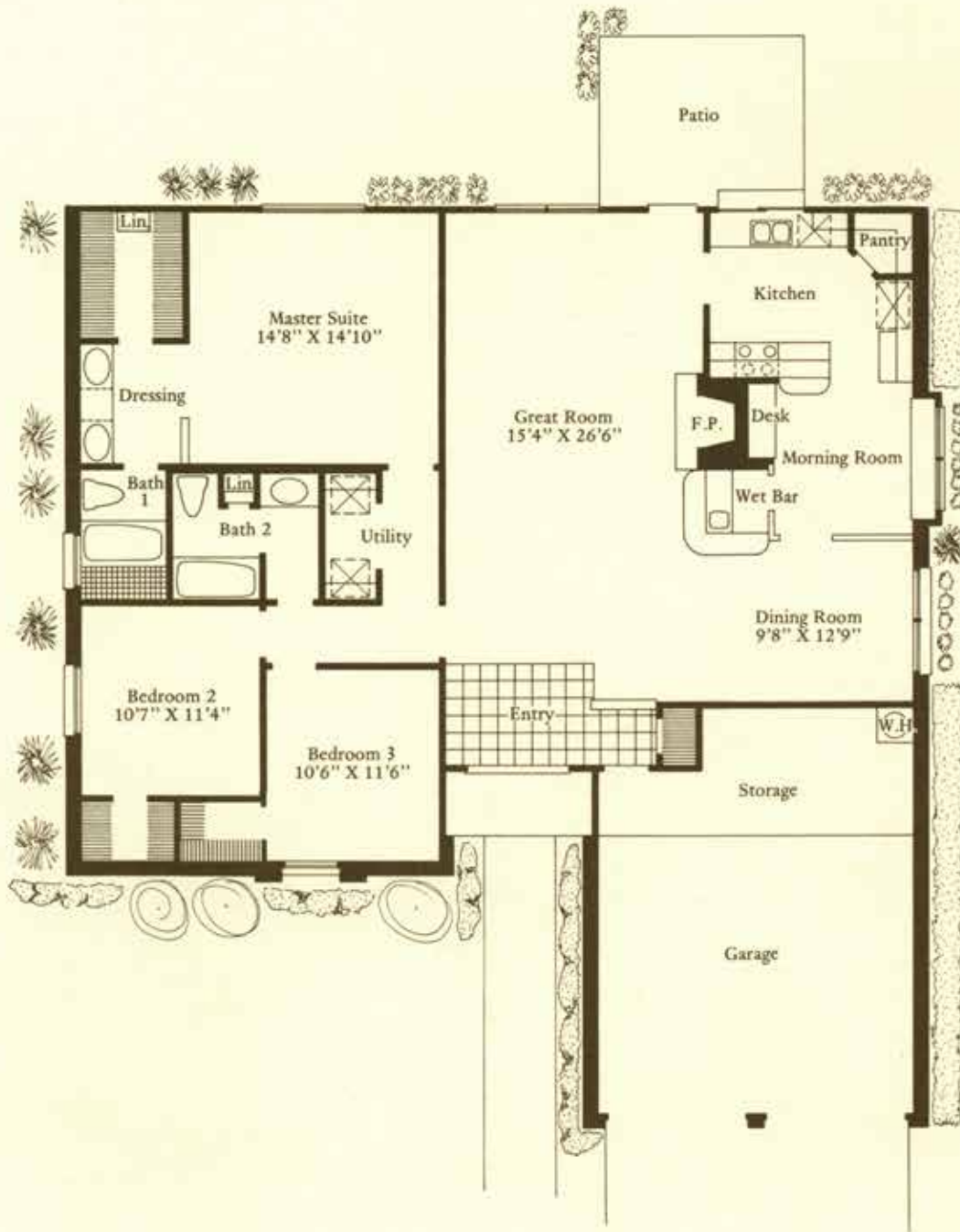


Exterior B



Exterior C

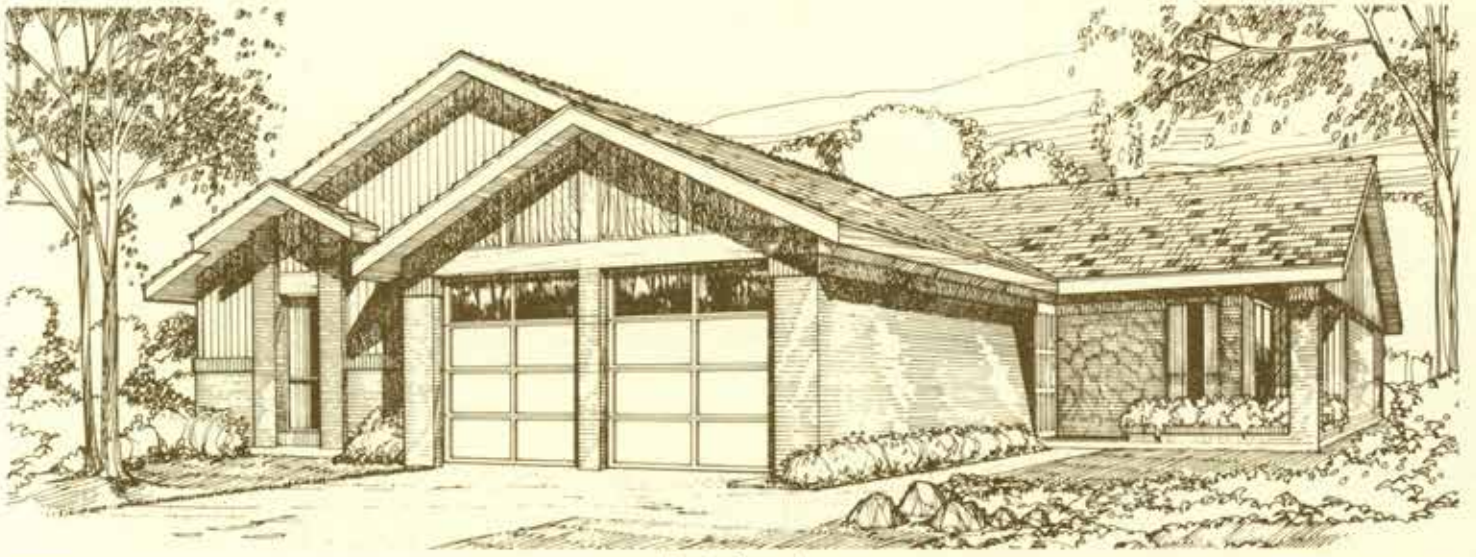
PLAN 333



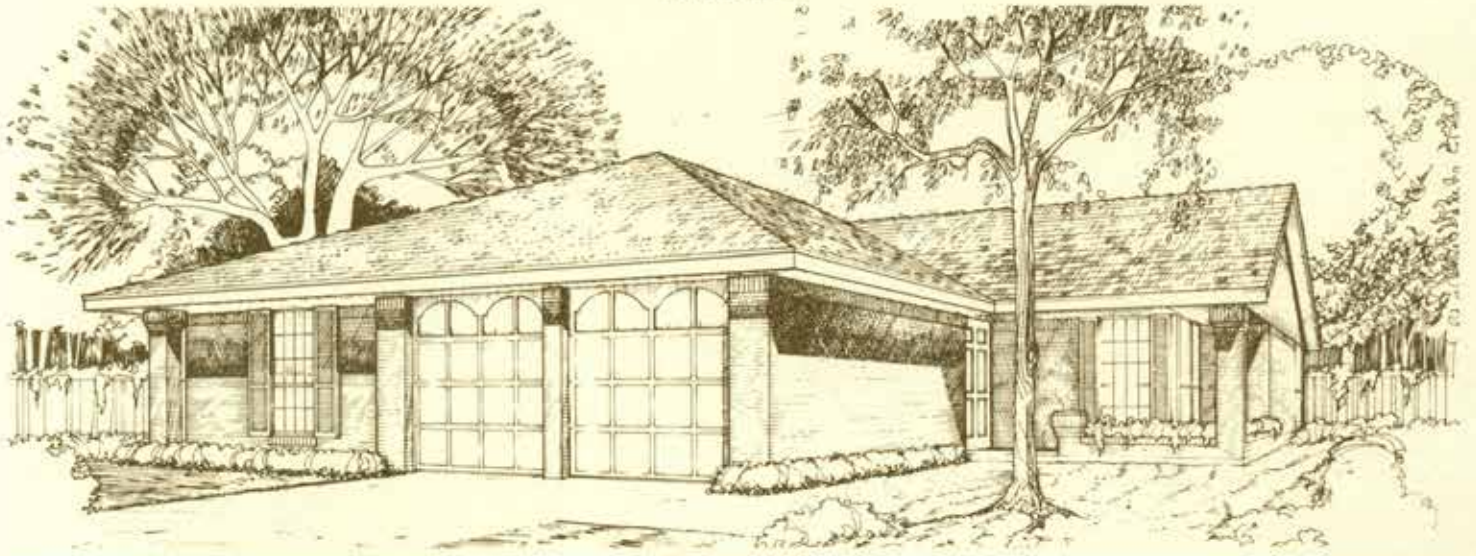
Architectural dimensions shown. Product and specifications subject to change.
© Wood Bros., 1978

1. Renderings of exterior designs are artist conceptions and may vary slightly from the actual home.
2. Floor plan room sizes are approximate and may vary slightly.
3. Window locations, sizes and numbers will differ with exterior design.
4. Certain lot conditions may require a home to be built in reverse of plan shown.
5. Trees and shrubs shown are artist's rendering and not included in price of home.
6. Vaulted ceilings and fireplaces may differ with exterior design.

WAVERLY



Exterior A

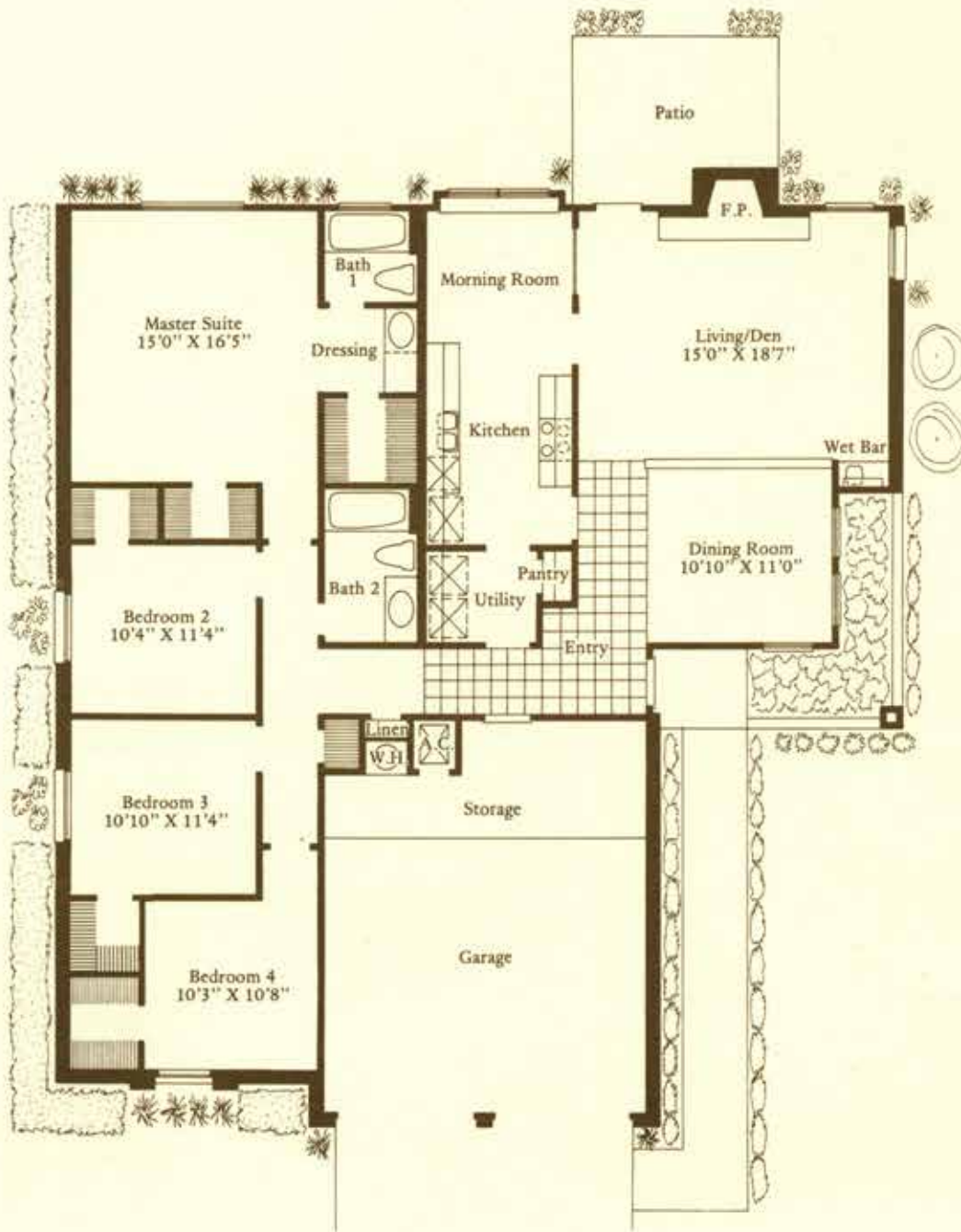


Exterior B



Exterior C

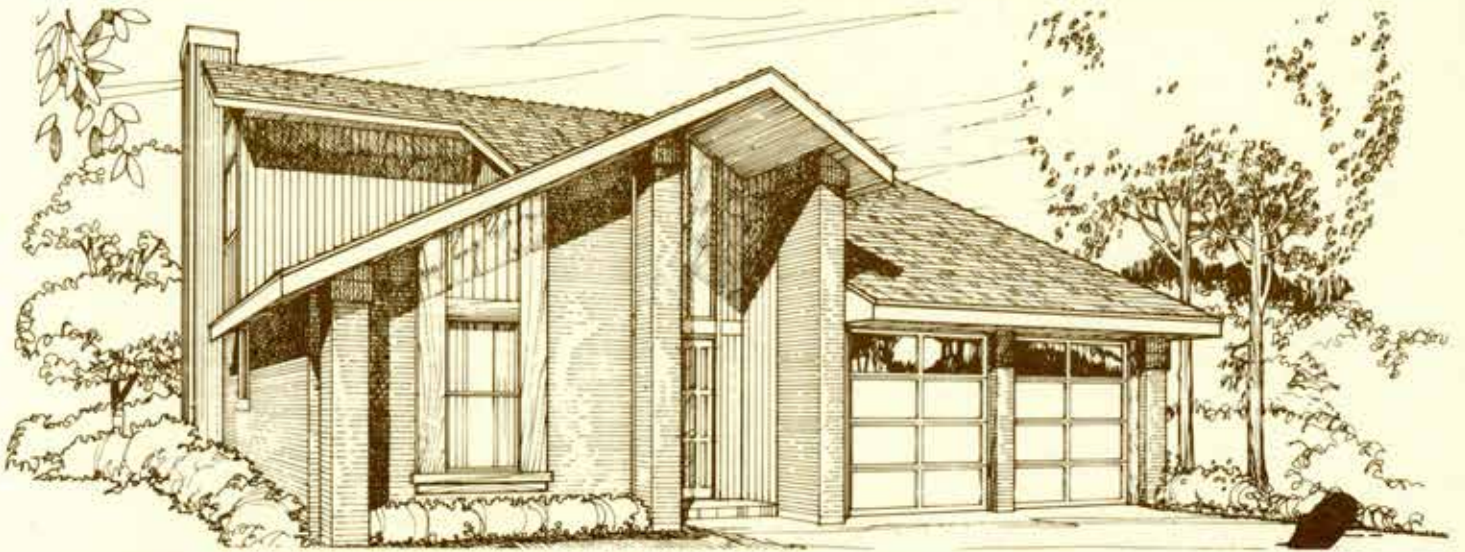
PLAN 334



Architectural dimensions shown. Product and specifications subject to change.
© Wood Bros., 1978

1. Renderings of exterior designs are artist conceptions and may vary slightly from the actual home.
2. Floor plan room sizes are approximate and may vary slightly.
3. Window locations, sizes and numbers will differ with exterior design.
4. Certain lot conditions may require a home to be built in reverse of plan shown.
5. Trees and shrubs shown are artist's rendering and not included in price of home.
6. Vaulted ceilings and fireplaces may differ with exterior design.

BERKELEY



Exterior A

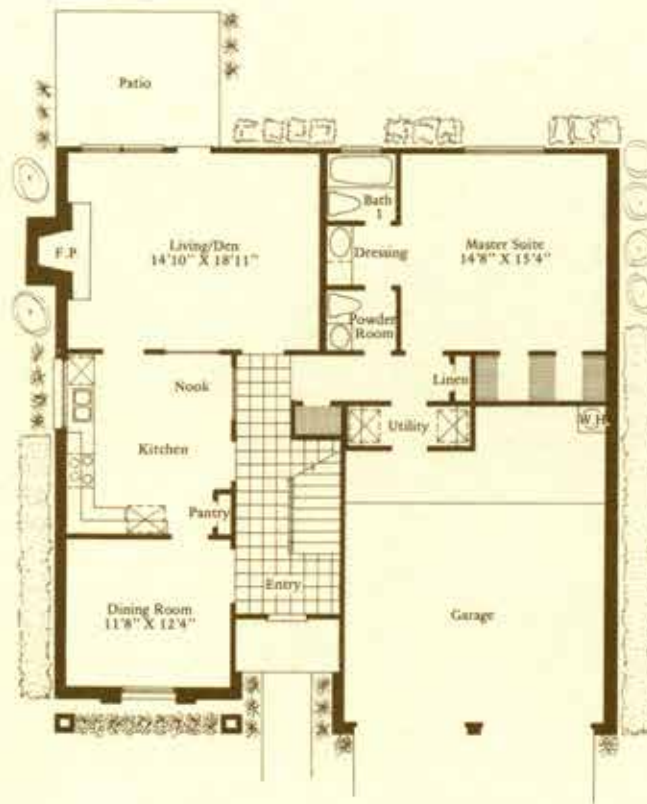
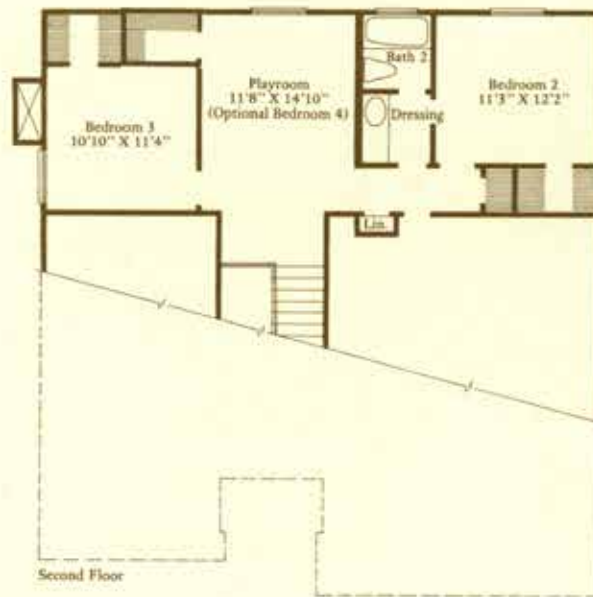


Exterior B



Exterior C

PLAN 335



Architectural dimensions shown. Product and specifications subject to change.
 © Wood Bros., 1978

1. Renderings of exterior designs are artist conceptions and may vary slightly from the actual home.
2. Floor plan room sizes are approximate and may vary slightly.
3. Window locations, sizes and numbers will differ with exterior design.
4. Certain lot conditions may require a home to be built in reverse of plan shown.
5. Trees and shrubs shown are artist's rendering and not included in price of home.
6. Vaulted ceilings and fireplaces may differ with exterior design.

CHELSEA



Exterior A

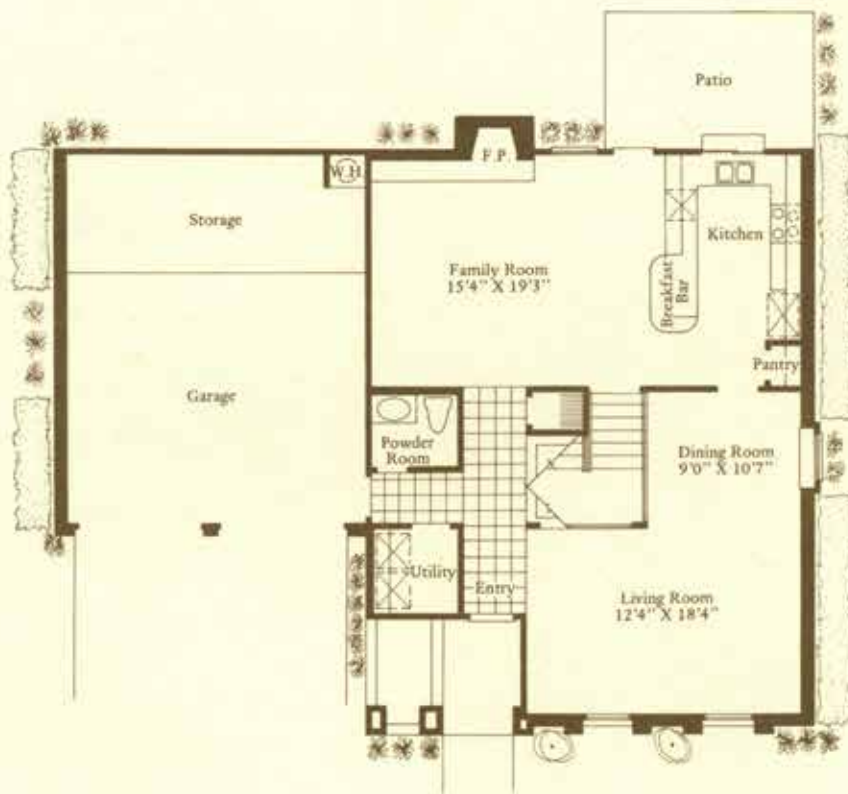


Exterior B



Exterior C

PLAN 336



Architectural dimensions shown. Product and specifications subject to change.
 © Wood Bros., 1978

1. Renderings of exterior designs are artist conceptions and may vary slightly from the actual home.
2. Floor plan room sizes are approximate and may vary slightly.
3. Window locations, sizes and numbers will differ with exterior design.
4. Certain lot conditions may require a home to be built in reverse of plan shown.
5. Trees and shrubs shown are artist's rendering and not included in price of home.
6. Vaulted ceilings and fireplaces may differ with exterior design.