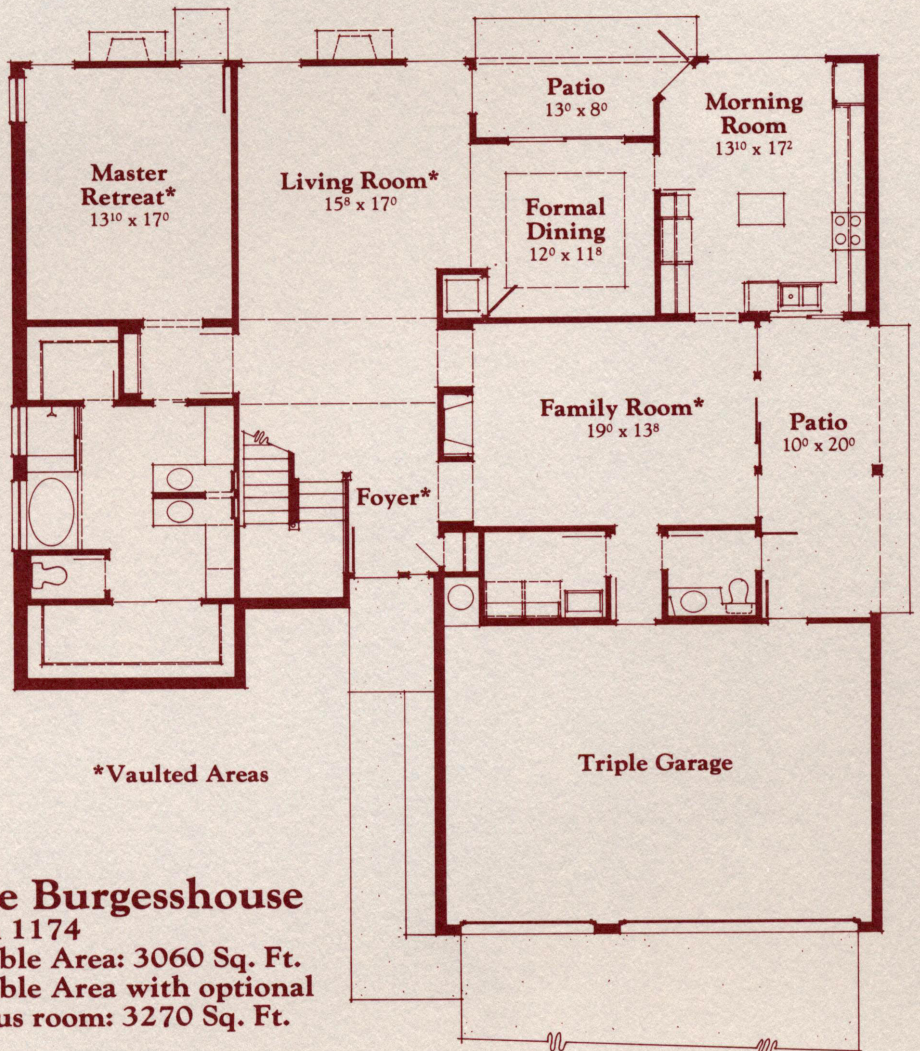
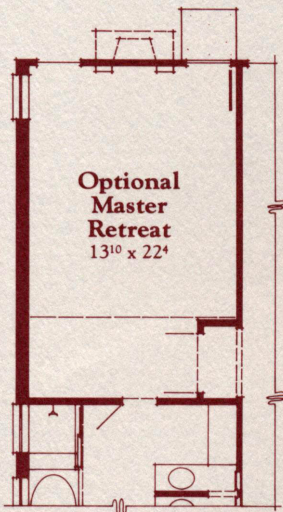
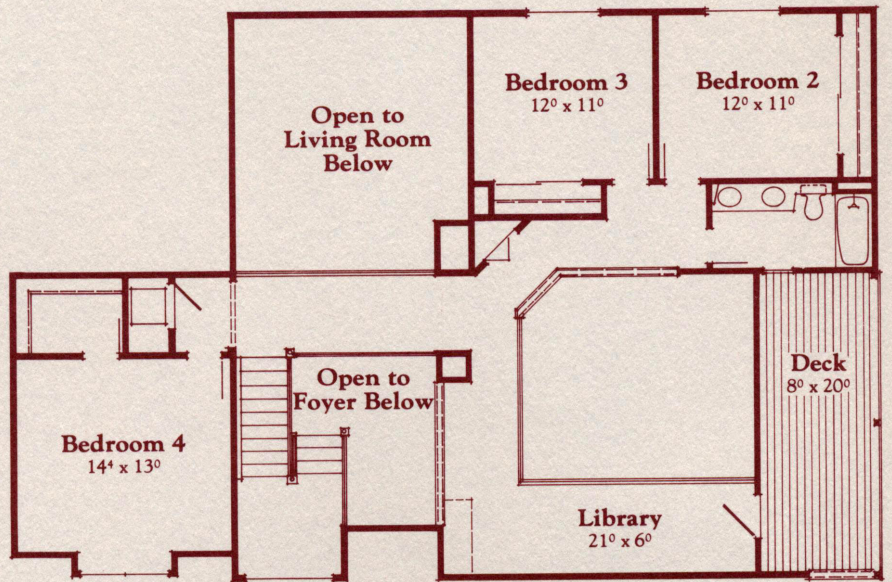
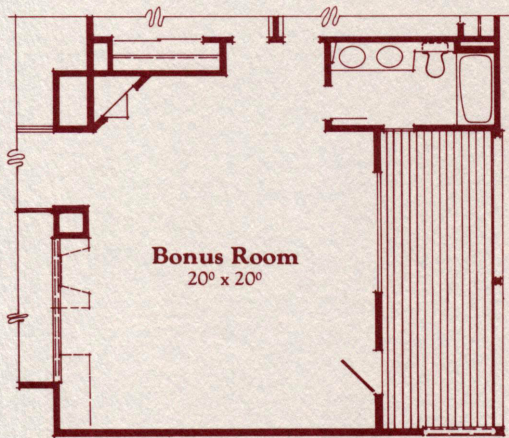
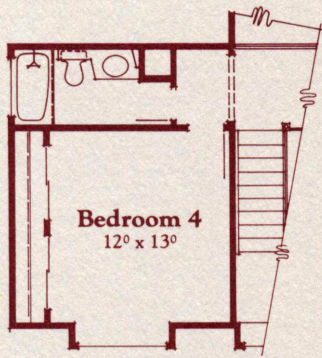


COVENTRY



*Vaulted Areas

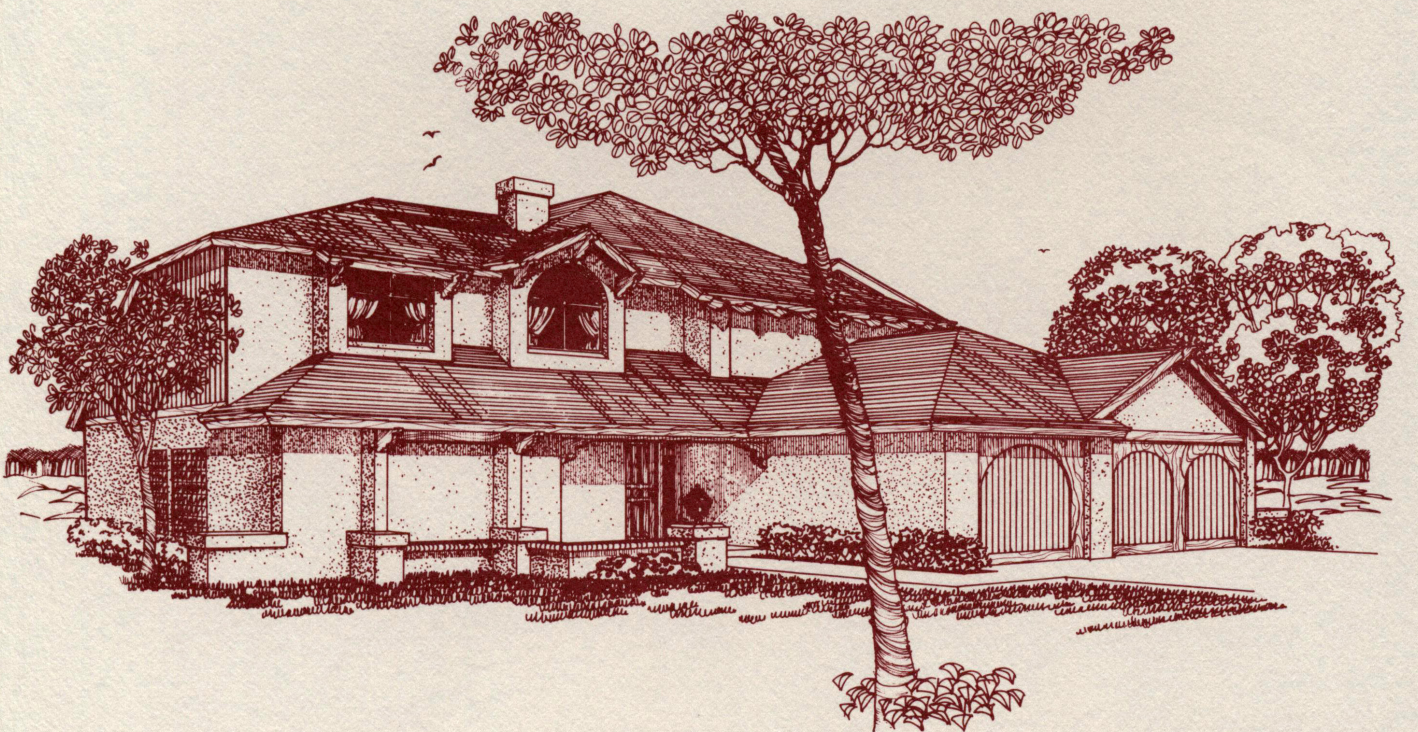
PLEASE NOTE:

This floor plan and its exterior design (opposite side) are only artist renderings. Location, size, existence of doors, windows, walls, fireplaces and any other item depicted may vary depending on exterior preference or choice of options. Standard features may vary in each Community where plan is built. Complete plans are available for inspection upon request.

ALL DIMENSIONS ARE APPROXIMATE:
Terms: VA, FHA or Conventional. Prices, plans, features and locations are subject to change without notice.

The Burgesshouse
Plan 1174
Livable Area: 3060 Sq. Ft.
Livable Area with optional bonus room: 3270 Sq. Ft.

COVENTRY

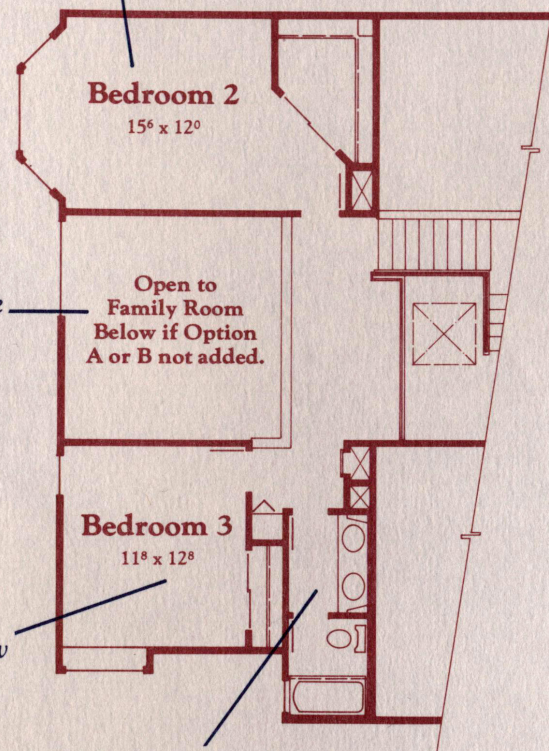


COVENTRY

PLEASE NOTE:
This floor plan and its exterior design (opposite side) are only artist renderings. Location, size, existence of doors, windows, walls, fireplaces and any other item depicted may vary depending on exterior preference or choice of options. Standard features may vary in each Community where plan is built. Complete plans are available for inspection upon request.

ALL DIMENSIONS ARE APPROXIMATE:
Terms: VA, FHA or Conventional. Prices, plans, features and locations are subject to change without notice.

Huge bayed bedroom with gigantic walk-in closet

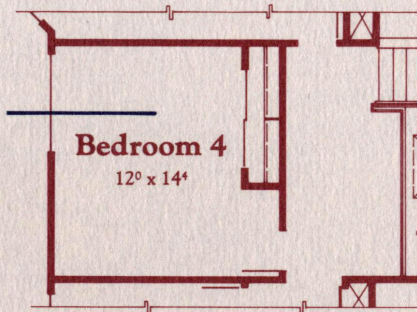


Option A or B may be added here prior to start of construction

Box bay window is included in this large bedroom

Compartmented hall bath with double lavs

Optional 4th bedroom may be added prior to start of construction



Option B

Bayed morning room for informal family dining

Gourmet kitchen with micro-wave and spacious pantry

Dry bar standard in this area; sink may be added prior to start of construction



Dining* 11'4" x 12'0"

Vaulted living and dining room with open staircase leading to balcony area above

Large patio slab

Spacious family room with lots of wall space and wood burning fireplace for cozy family evenings

Family Room 19'4" x 14'4"

Living* 12'8" x 20'0"

Large skylight is an included feature

Raised foyer with unique angled look that says this home is special

Powder room has access to rear yard for swimming pool

Double Garage

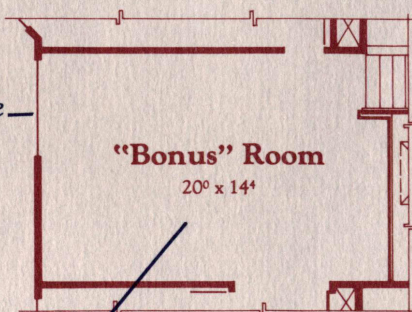
Master* Retreat 18'8" x 15'0"

Vaulted master retreat with step-down entry

Two car garage with direct inside access

A spectacular master bath with two-story-high shower

Optional balcony may be added here prior to start of construction



Option A

Add this bonus room before start of construction for a great billiards room or children's play room

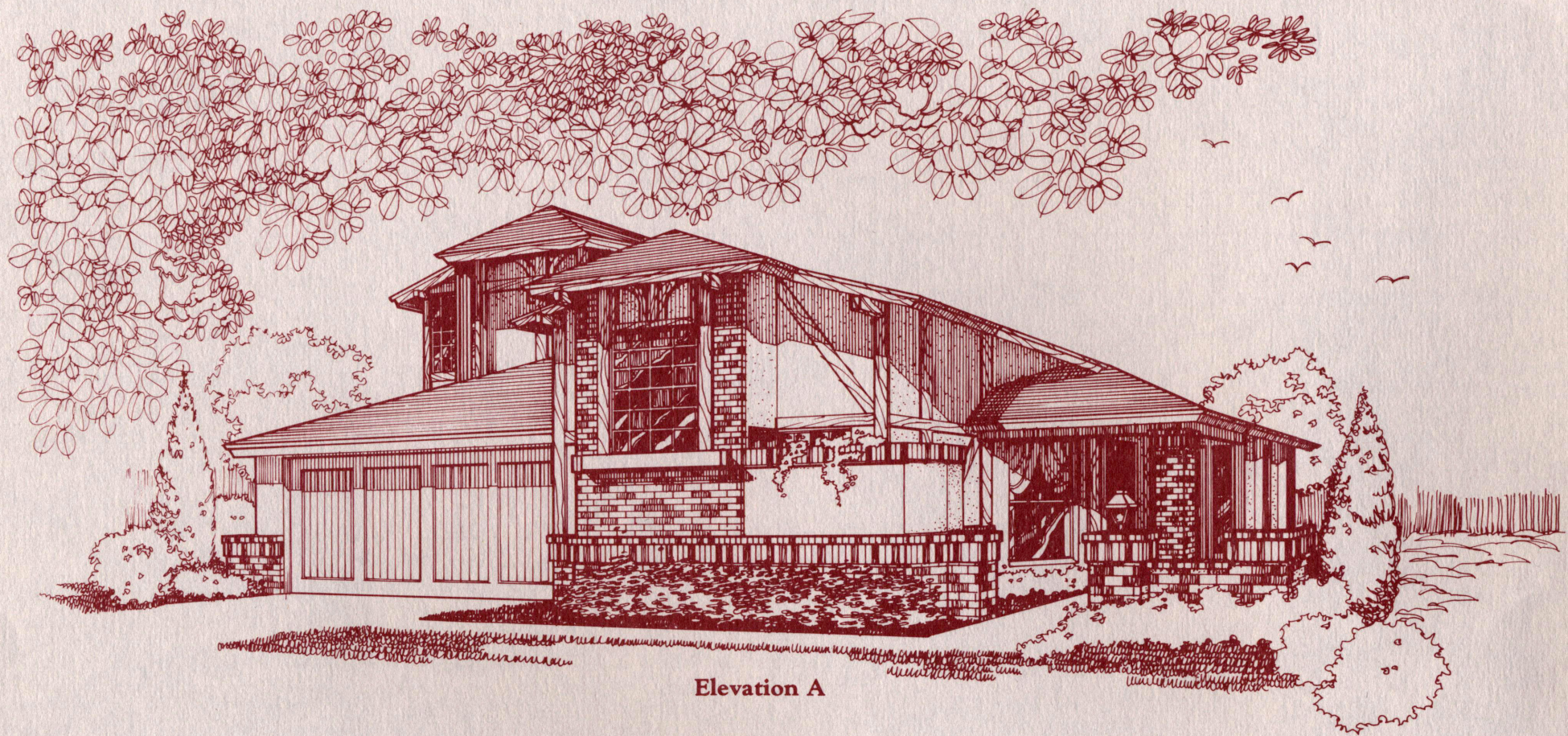
* Vaulted Areas

The Windsorhouse Plan 1144

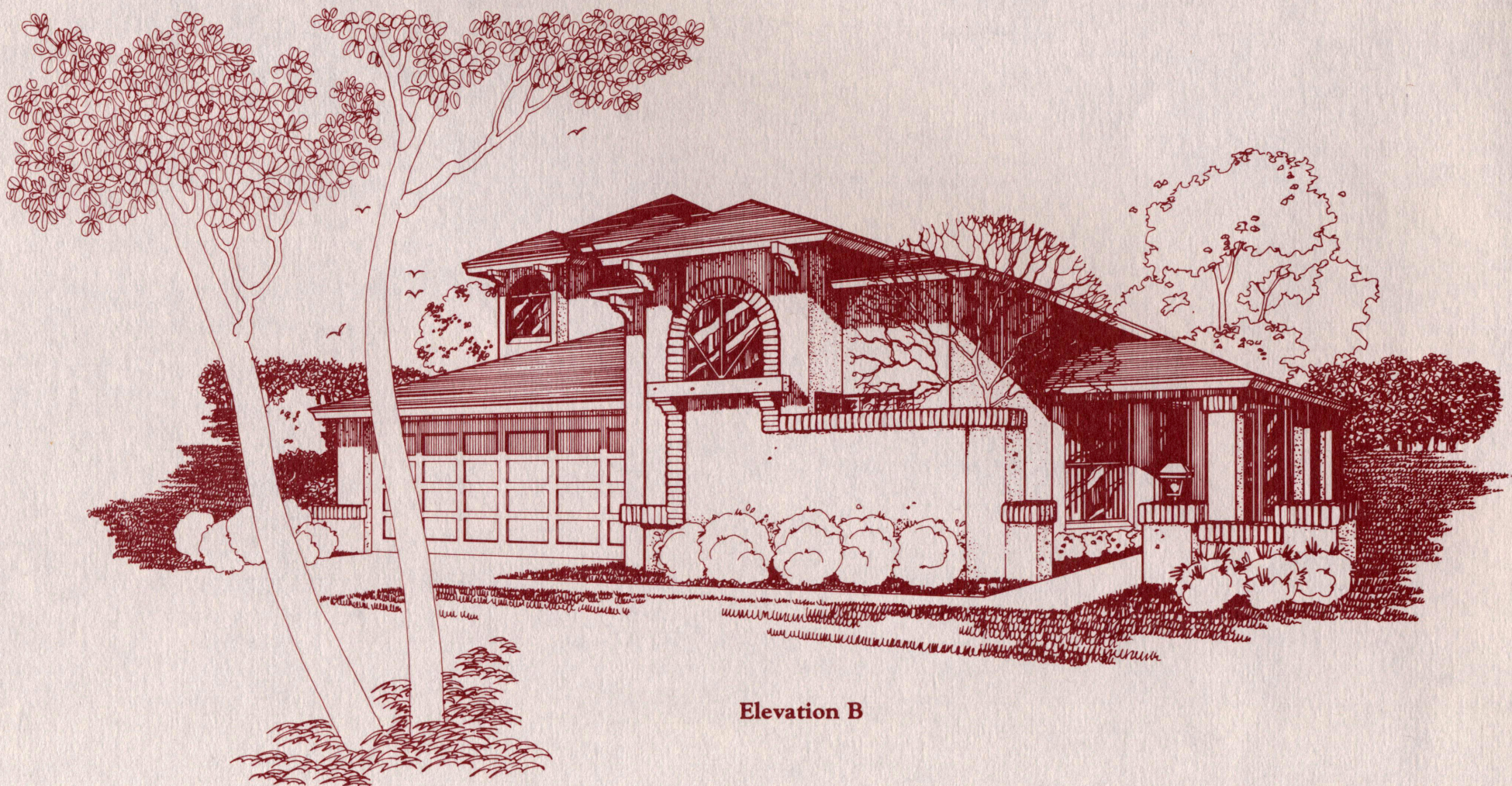
Living area: 2613 sq. ft.

Living area with bonus area or 4th bedroom: 2807

COVENTRY

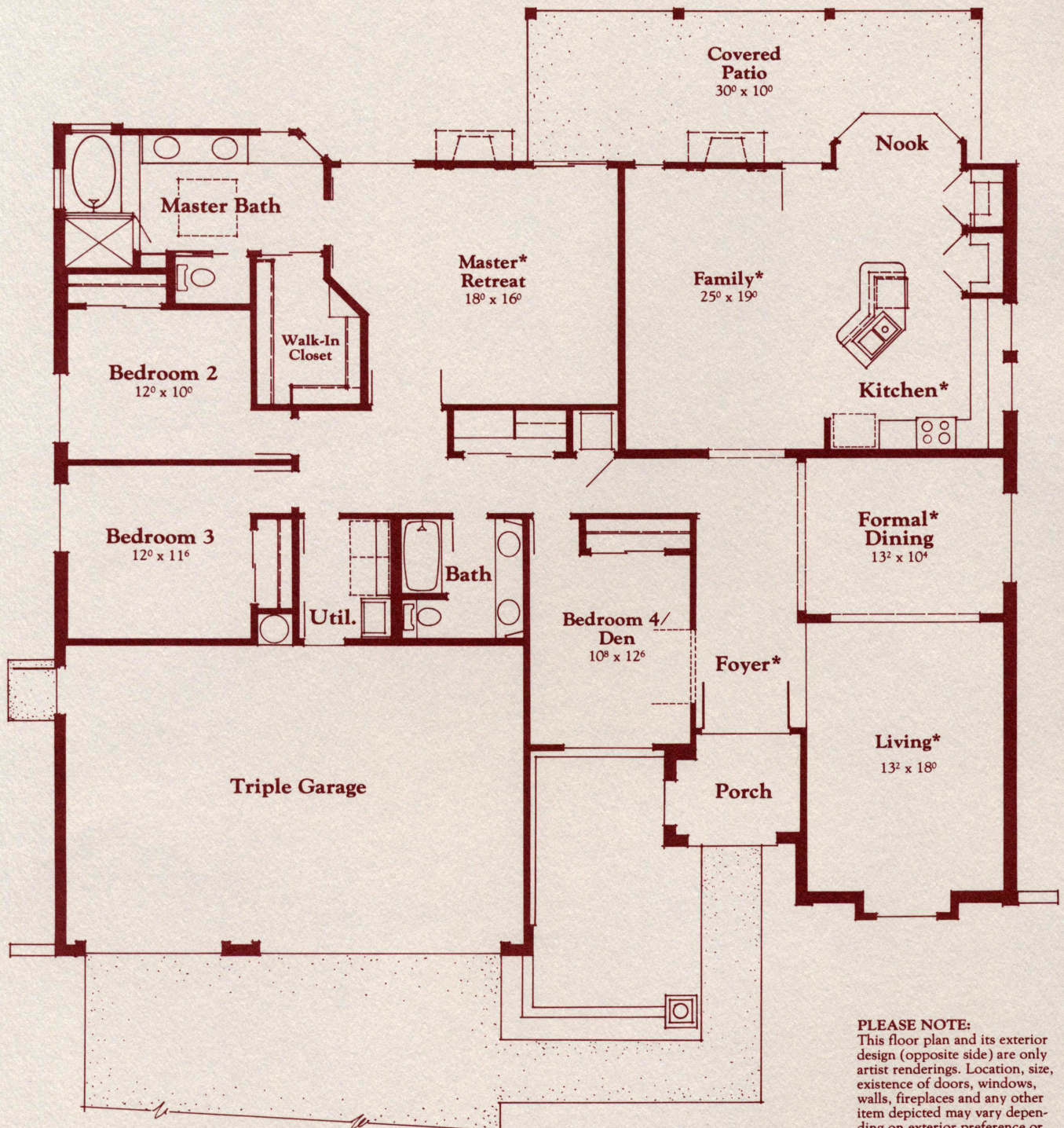


Elevation A



Elevation B

COVENTRY



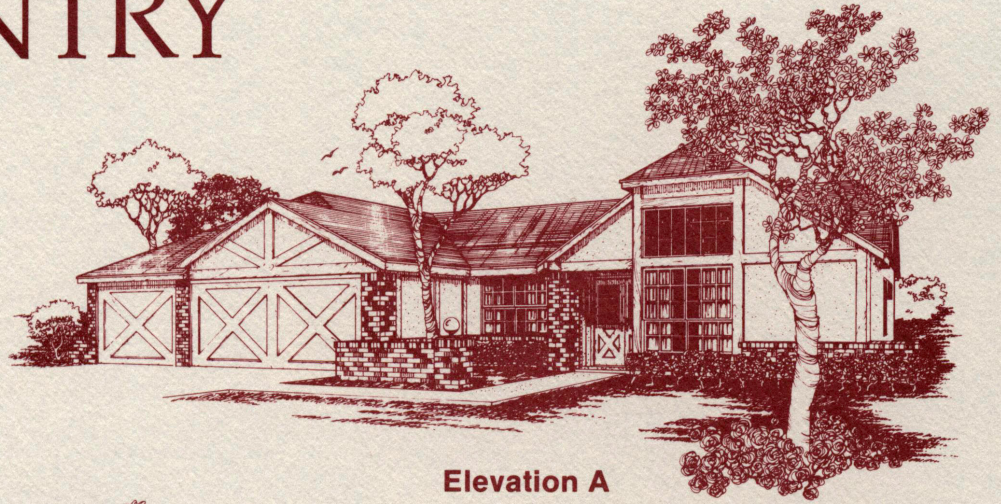
The Essexhouse
Plan 1164
Livable Area: 2444 Sq. Ft.

PLEASE NOTE:
 This floor plan and its exterior design (opposite side) are only artist renderings. Location, size, existence of doors, windows, walls, fireplaces and any other item depicted may vary depending on exterior preference or choice of options. Standard features may vary in each Community where plan is built. Complete plans are available for inspection upon request.

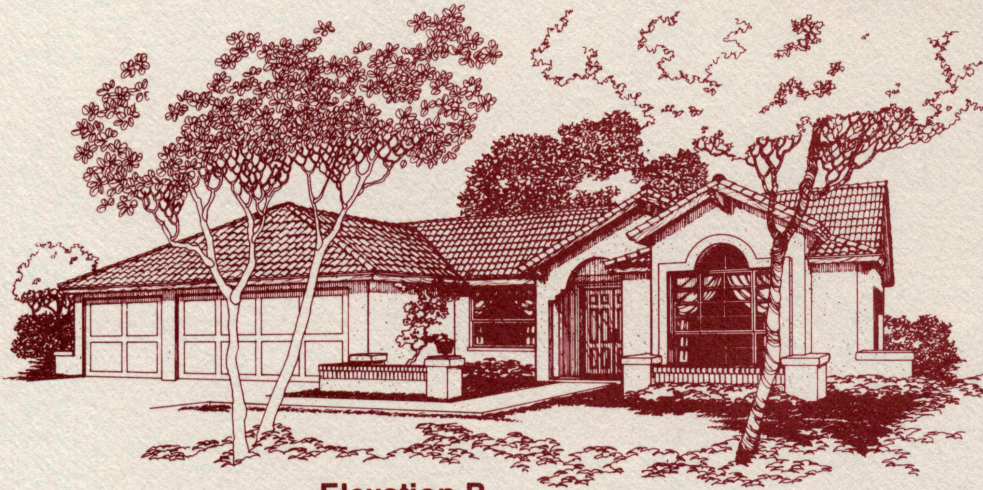
ALL DIMENSIONS ARE APPROXIMATE:
 Terms: VA, FHA or Conventional. Prices, plans, features and locations are subject to change without notice.

***Vaulted Ceiling**

COVENTRY



Elevation A



Elevation B

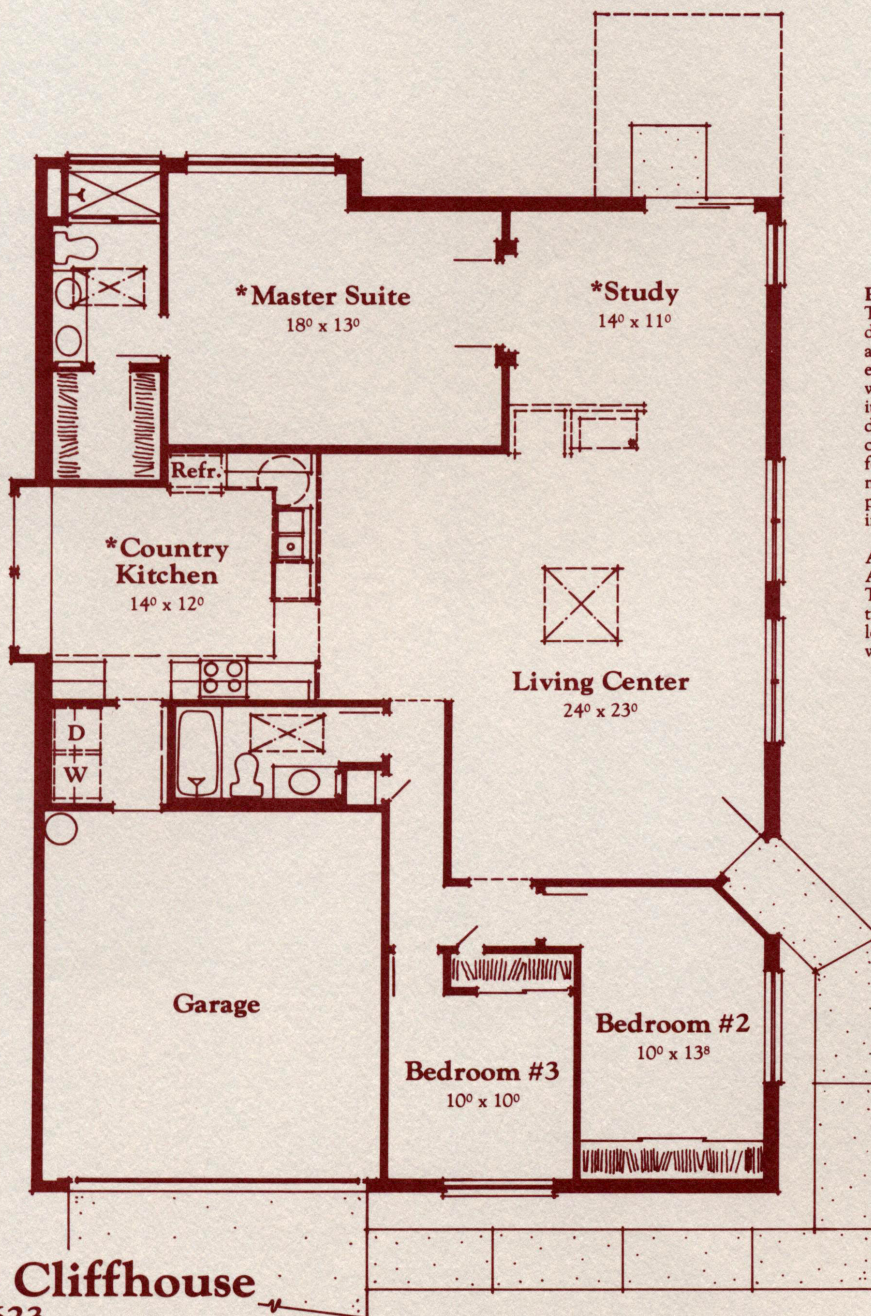
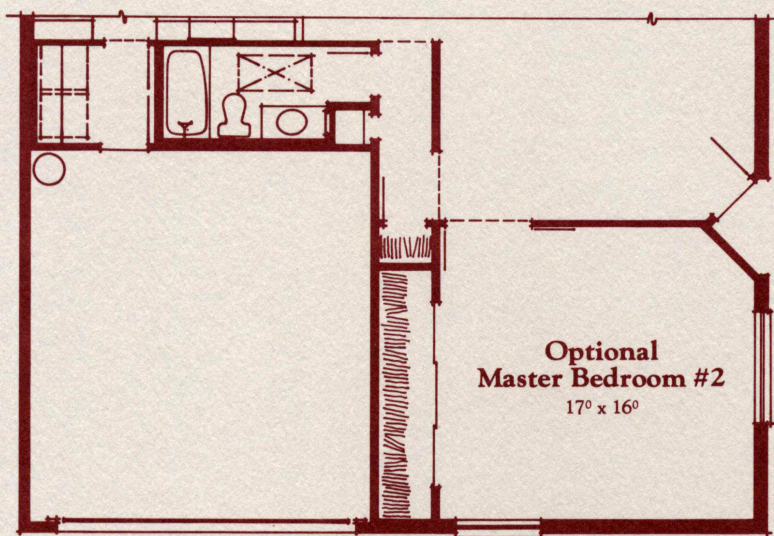


Elevation C



Elevation D

COVENTRY



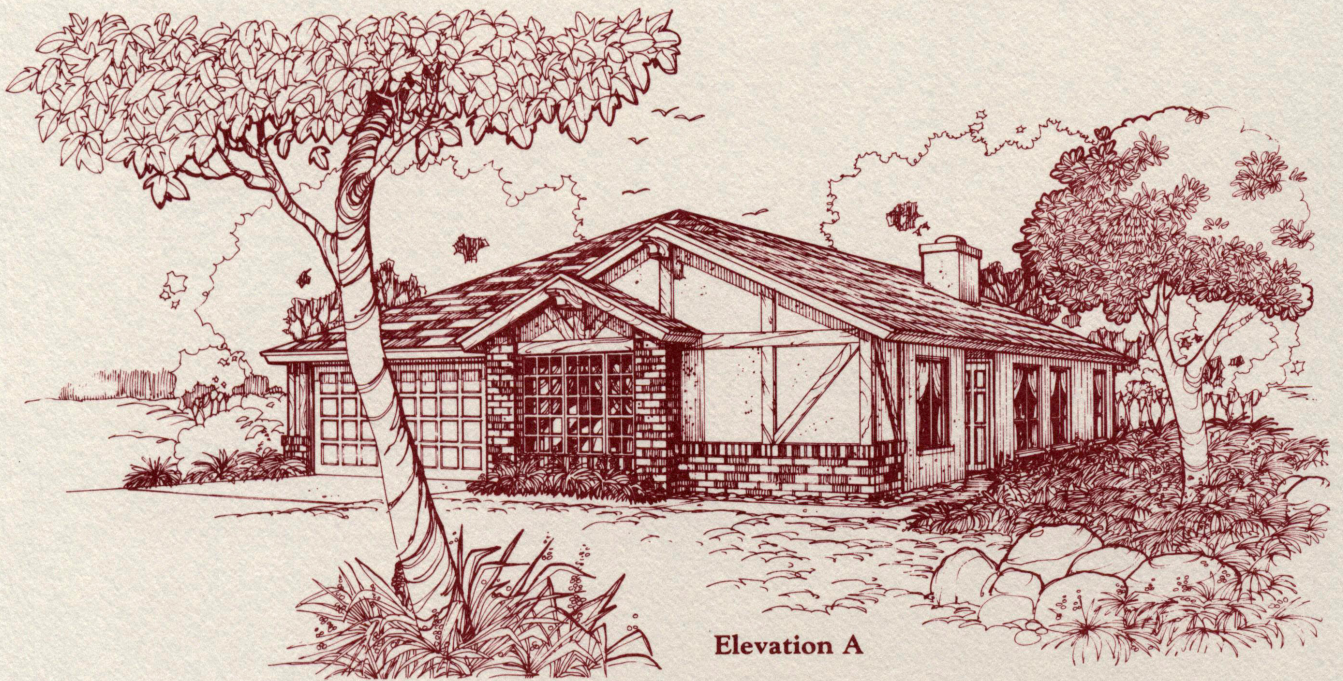
PLEASE NOTE:
This floor plan and its exterior design (opposite side) are only artist renderings. Location, size, existence of doors, windows, walls, fireplaces and any other item depicted may vary depending on exterior preference or choice of options. Standard features may vary in each Community where plan is built. Complete plans are available for inspection upon request.

ALL DIMENSIONS ARE APPROXIMATE:
Terms: VA, FHA or Conventional. Prices, plans, features and locations are subject to change without notice.

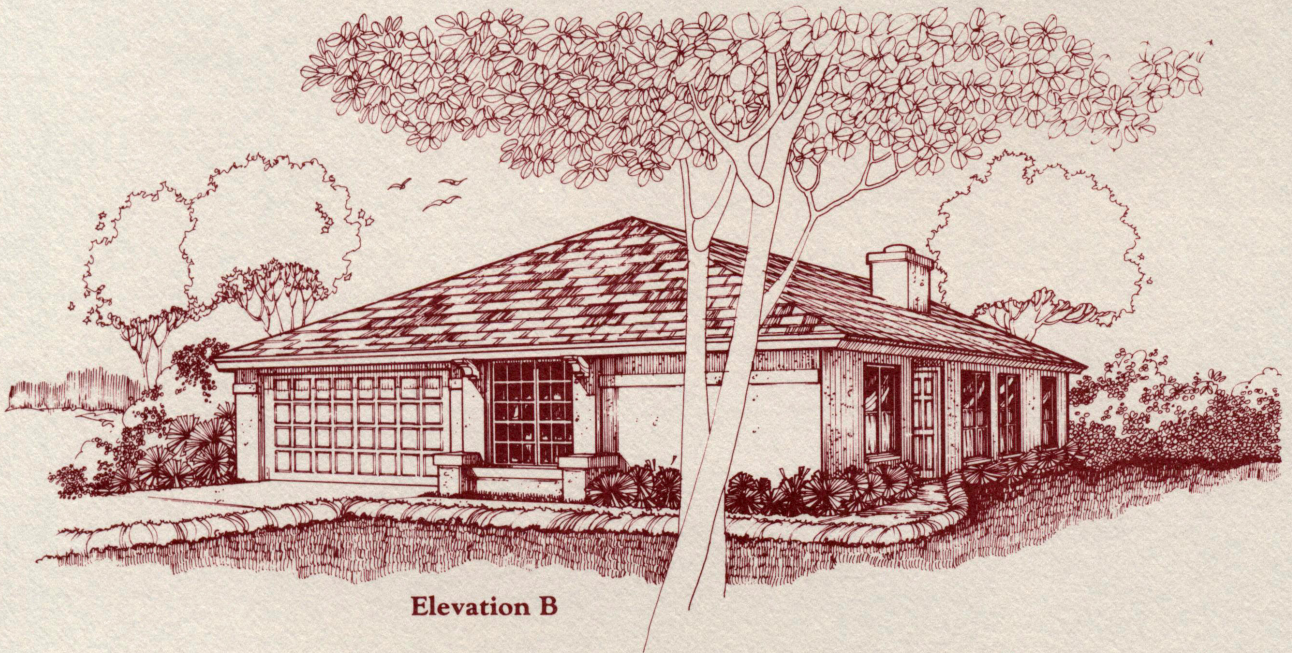
The Cliffhouse
Plan 623
Living Area: 1812 Sq. Feet

*Vaulted Areas

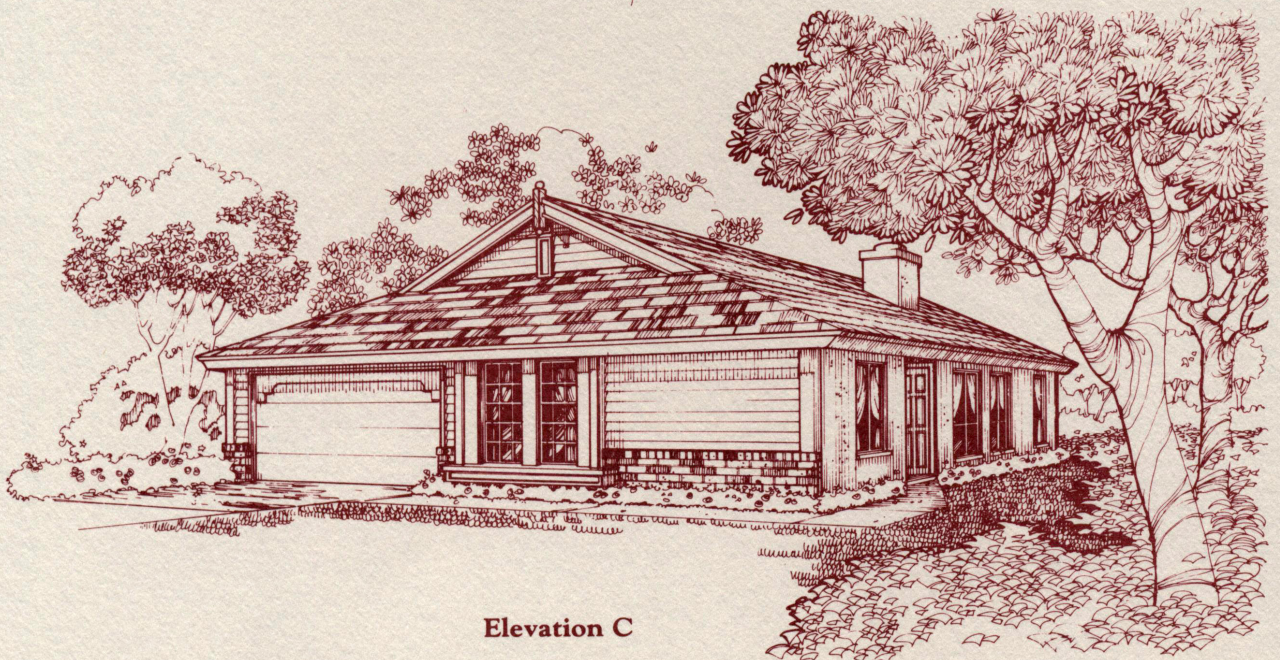
COVENTRY



Elevation A



Elevation B

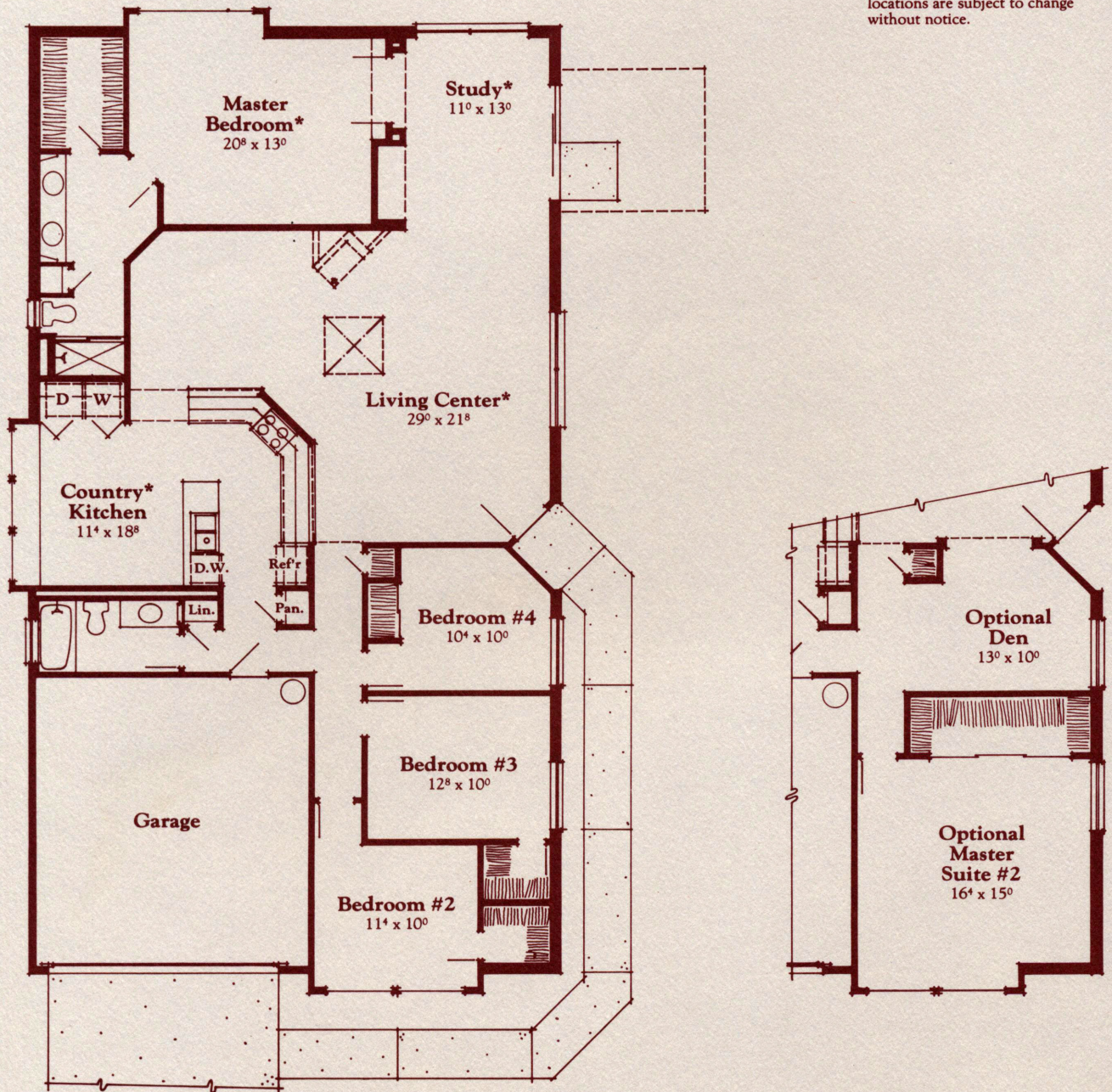


Elevation C

COVENTRY

PLEASE NOTE:
 This floor plan and its exterior design (opposite side) are only artist renderings. Location, size, existence of doors, windows, walls, fireplaces and any other item depicted may vary depending on exterior preference or choice of options. Standard features may vary in each Community where plan is built. Complete plans are available for inspection upon request.

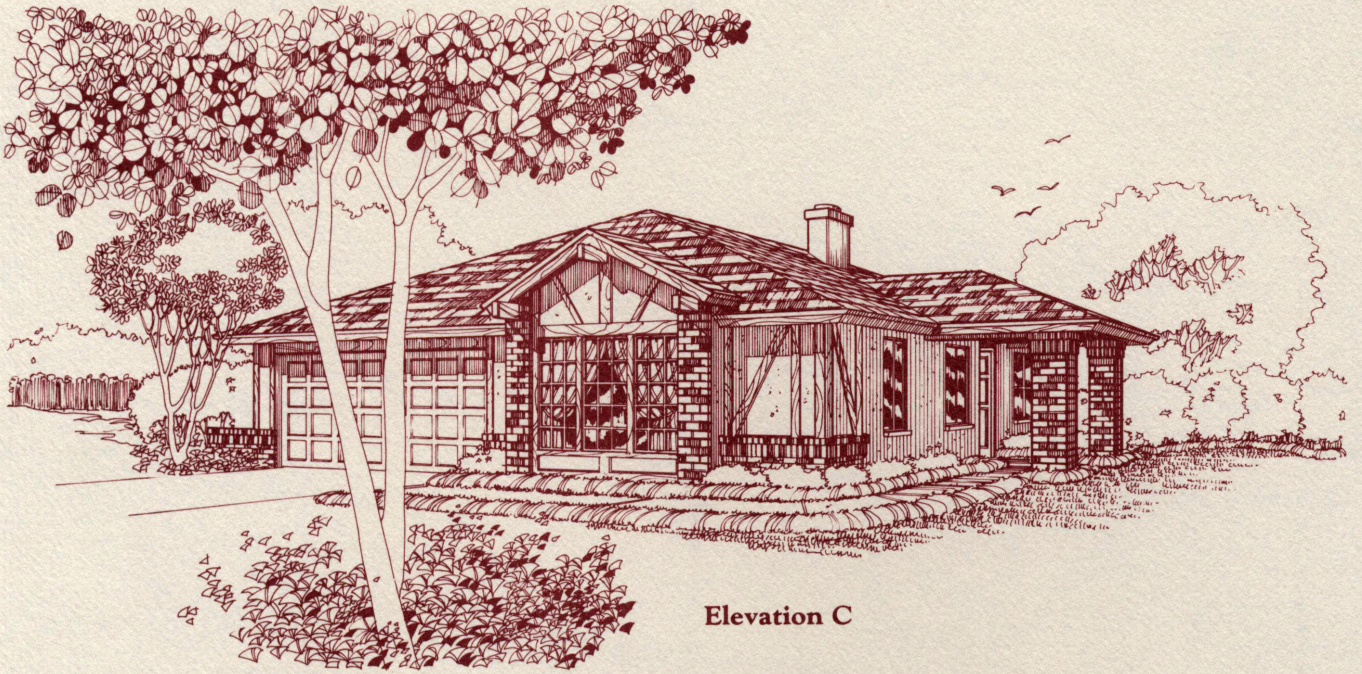
ALL DIMENSIONS ARE APPROXIMATE:
 Terms: VA, FHA or Conventional. Prices, plans, features and locations are subject to change without notice.



*Vaulted Areas

The Arborhouse
 Plan 604
 Livable Area: 2055 Sq. Ft.

COVENTRY



Elevation C



Elevation B



Elevation A