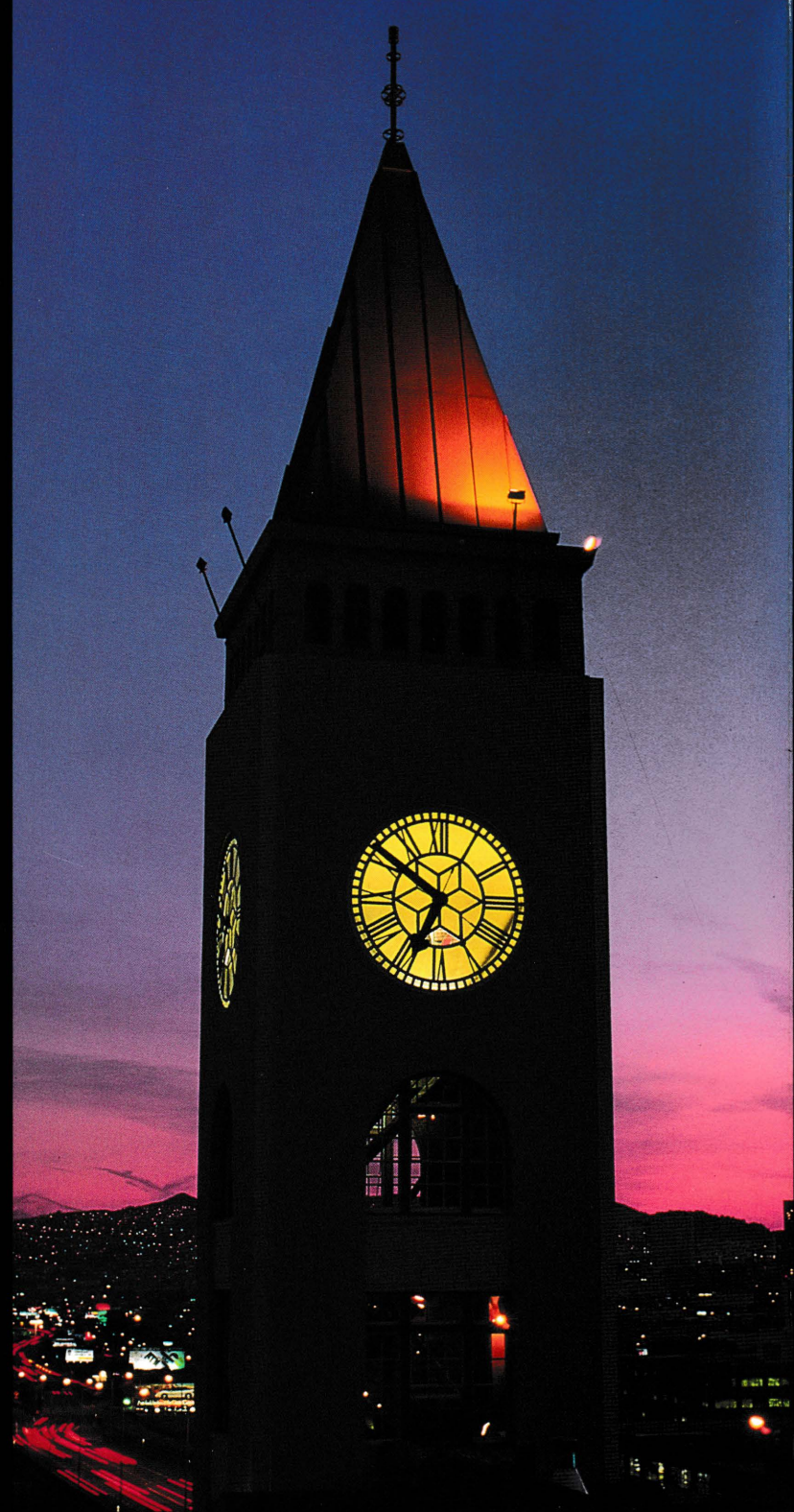


CLOCKTOWER



It's time . . .

Live/Work Lofts.

It's a new style of urban living, and it's happening in one of the hottest areas of the city. The 127 new lofts in San Francisco's historic ClockTower Building will bring together a new live/work community of creative, diverse people. Entrepreneurs, artists, designers and a wide range of urban home-steaders are drawn to both the practicality and romance of loft living. The ClockTower Lofts offer beautiful, unique spaces ranging from 600 to 2000 square feet.



Innovative Design.

Think space, high ceilings, exposed brick, massive wood beams and lots of natural light. Think tall, arching industrial windows, dramatic courtyards and expansive Bay views. The ClockTower Building, built in 1907, has been transformed into a stunning example of contemporary design by the award winning architects David Baker + Associates. All the lofts have spacious platform or mezzanine bedrooms and high-design kitchens and baths with custom countertops, tile floors and modern fixtures.

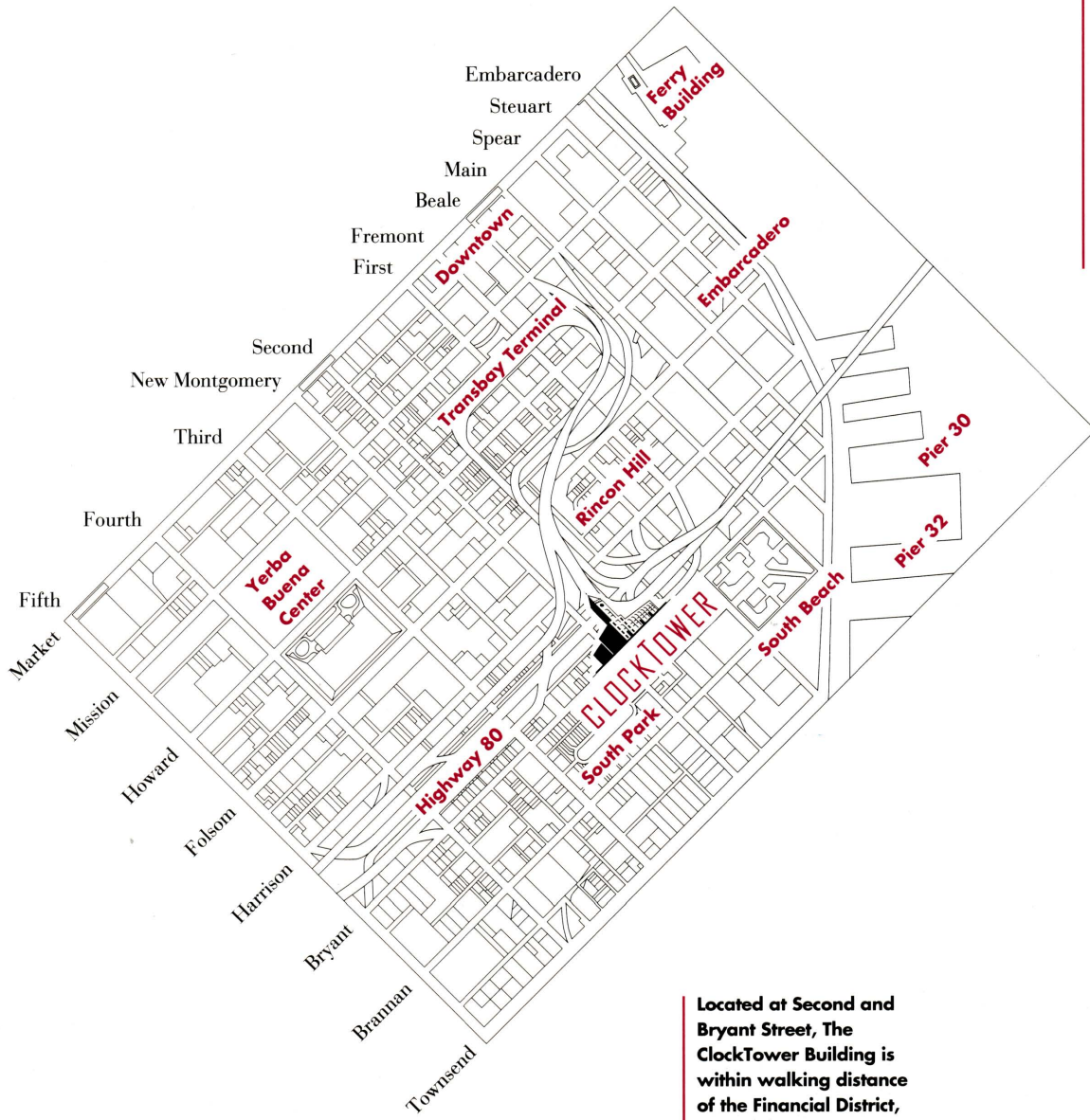


A Good Time.

Now's the time to buy a home and the ClockTower Building offers the best value in town. Our loft representatives will help you analyze the financial opportunities and tax advantages of owning a loft. Become a part of this dynamic San Francisco live/work community. Now is the time and it's the ClockTower's hour. Come see us at 461 Second Street in San Francisco or call 415 543-9800 for a private tour.

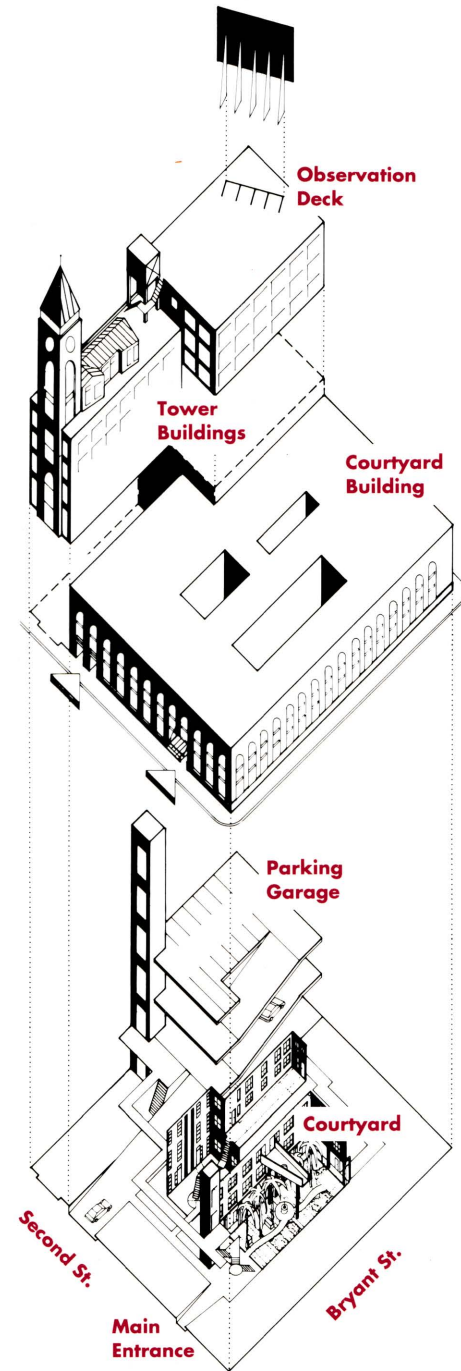


The ClockTower Building is located in San Francisco's new live/work district - an extraordinary mixture of lofts, shops, offices, outlet stores, restaurants, gyms, galleries and nightclubs.



Located at Second and Bryant Street, The ClockTower Building is within walking distance of the Financial District, the Embarcadero waterfront and some of the city's best new eateries.

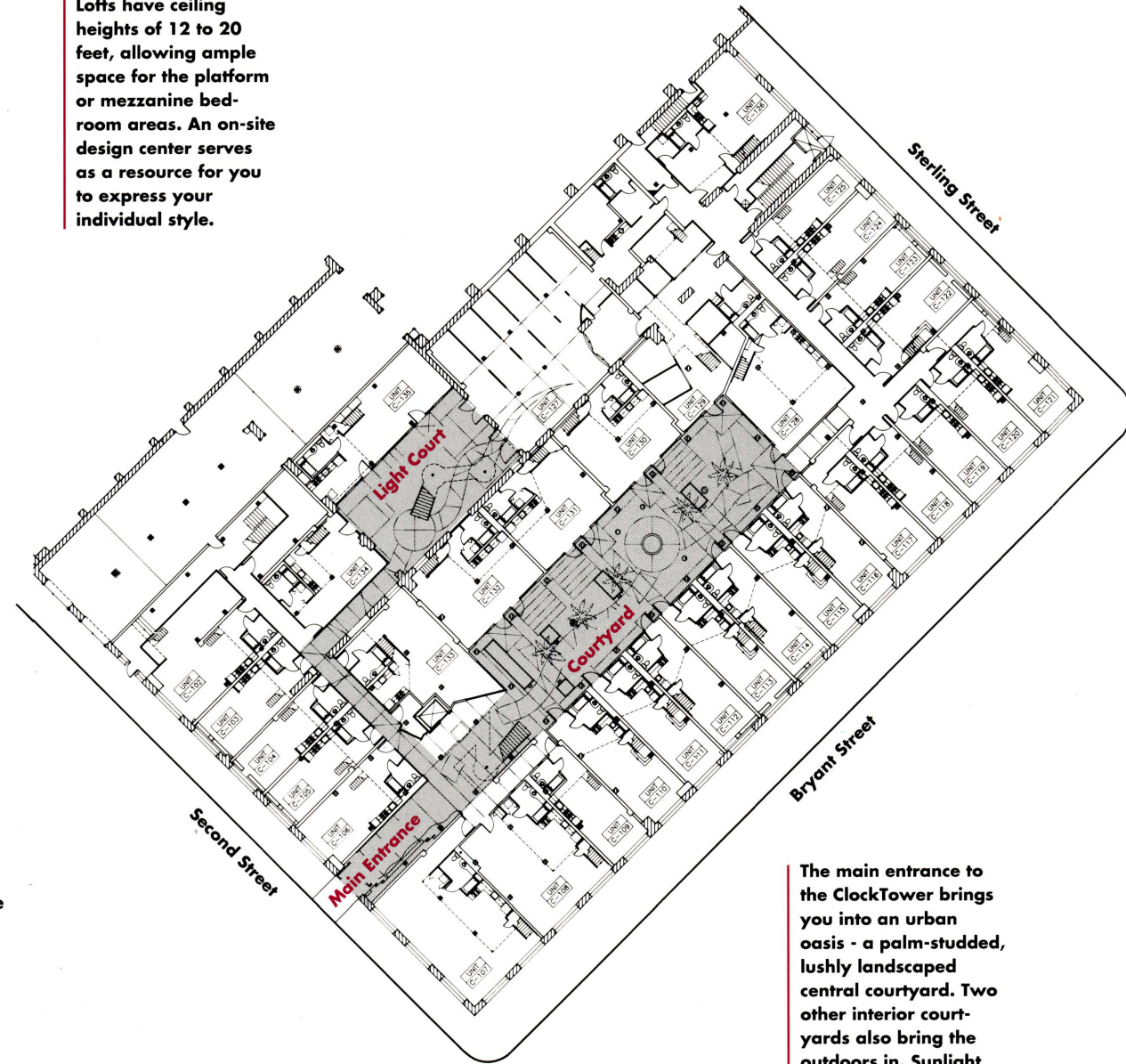
The ClockTower Building was originally constructed in 1907 for the Max Schmidt Lithograph Co., a printing firm that designed and produced the classic California fruit box labels and posters for the Panama Pacific International Expedition. As the company grew, a six-story concrete building was added along with the landmark clock tower.



The ClockTower is comprised of three adjoining buildings - the Courtyard Building and two Tower Buildings. The redesign unifies these three original spaces into one environment. Two elevators and a dramatic stairway lead to the 127 lofts that span 6 floors.

This is a general description of units and layouts. In a continuing effort to improve each loft, the developer reserves the right to make modifications in materials, specifications, price, plans, design, scheduling and delivery of the lofts without prior notice. Please see a sales person for specific information.

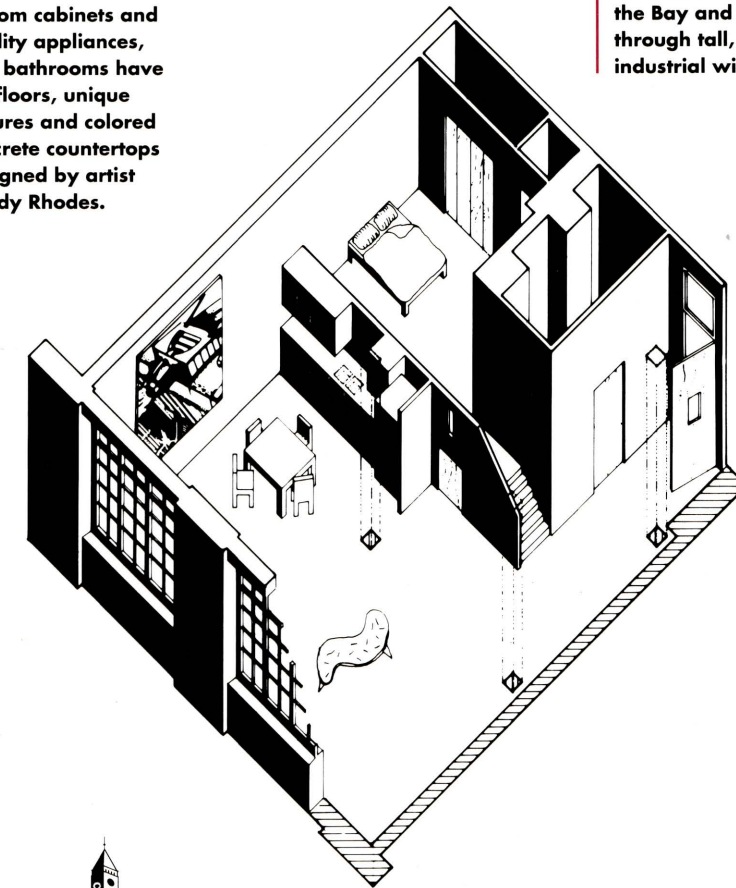
Ranging in size from 600 to 2000 square feet, the ClockTower lofts provide a range of floor plans for creating your own unique environment. Lofts have ceiling heights of 12 to 20 feet, allowing ample space for the platform or mezzanine bedroom areas. An on-site design center serves as a resource for you to express your individual style.



The main entrance to the ClockTower brings you into an urban oasis - a palm-studded, lushly landscaped central courtyard. Two other interior courtyards also bring the outdoors in. Sunlight streams into every loft through skylights, glass block walls, or large-paned windows that open to the courtyards or to the outside.

The finishes in the ClockTower lofts are as highly-designed as the building itself. Kitchens feature custom cabinets and quality appliances, and bathrooms have tile floors, unique fixtures and colored concrete countertops designed by artist Buddy Rhodes.

Many lofts offer spectacular views of the Bay and the City through tall, dramatic industrial windows.



461 Second Street
San Francisco, CA 94107
415 543-9800

The Sales Office is located on the first floor of the ClockTower Building to the right of the main entrance.

Hours:
Monday-Friday: 10 - 5
Saturday-Sunday: 12 - 5

Developed by:
ClockTower Associates
Mitsui Fudosan (USA), Inc.
McKenzie, Rose & Holliday Development, Inc.
Architecture by:
David Baker + Associates
Offered by:
Pacific Union Marketing