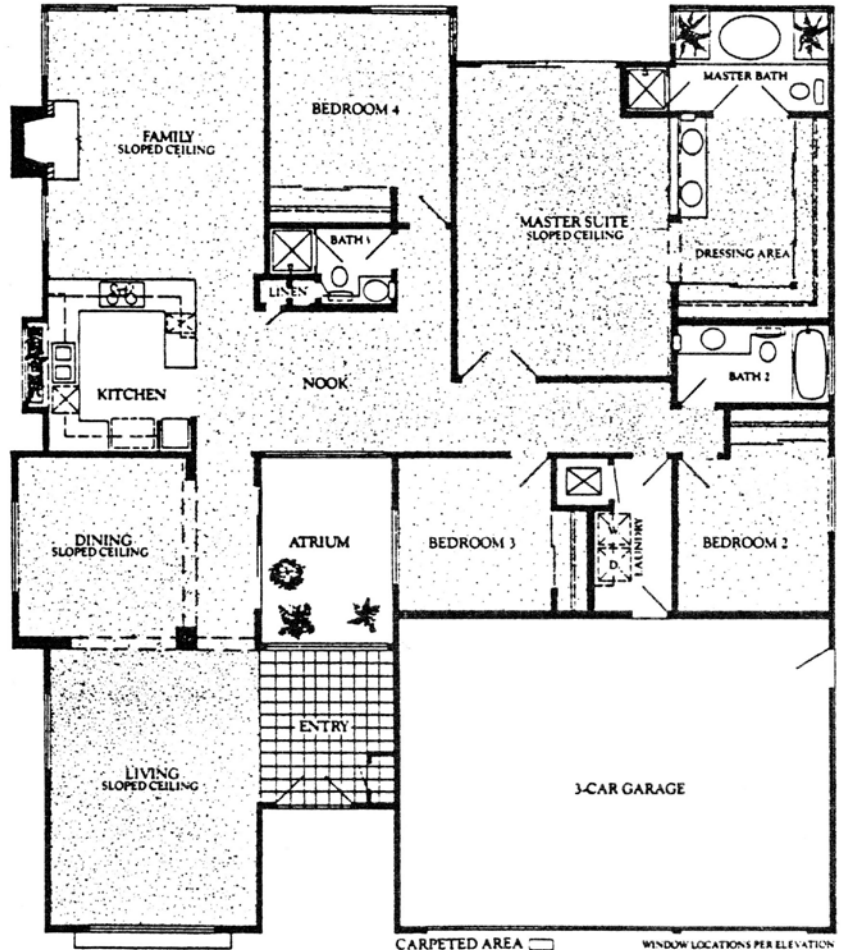


The Halifax

Plan 5841 - 4 bedrooms, 3 baths,
3-car garage

A central atrium, open to the sky, provides indoor garden views for many of the rooms in this beautiful home. Dramatic sloped ceilings in the entryway, in the elegant living room and in the separate formal dining room add further horizons to daily living. An efficiently planned kitchen has its own generous eating nook. There's even a window planter in the kitchen's working area. The big family room offers a fireplace and wide sliding glass patio doors. Three bedrooms and two baths are on one side of the home, while the spacious master suite offers seclusion and luxury with a sloped ceiling, glass doors to rear garden or patio areas and a separate dressing area. A fourth bedroom and adjacent third full bath are ideal for guests, or perhaps for use as a very private den.



CARPETED AREA 

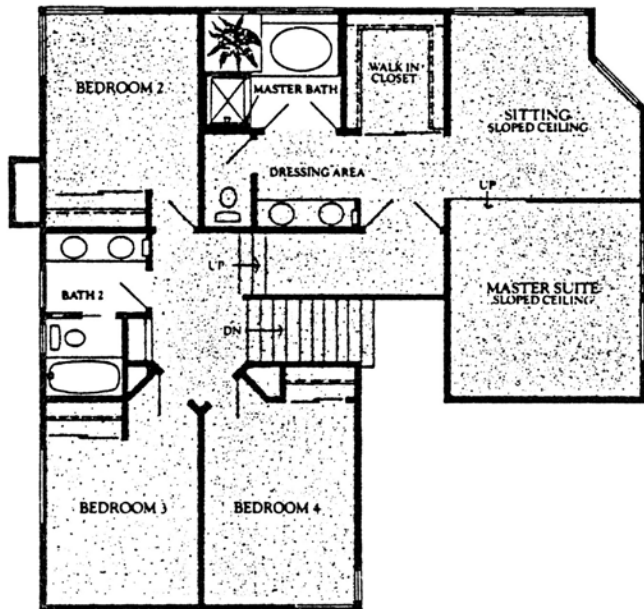
WINDOW LOCATIONS PER ELEVATION 

The Falmouth

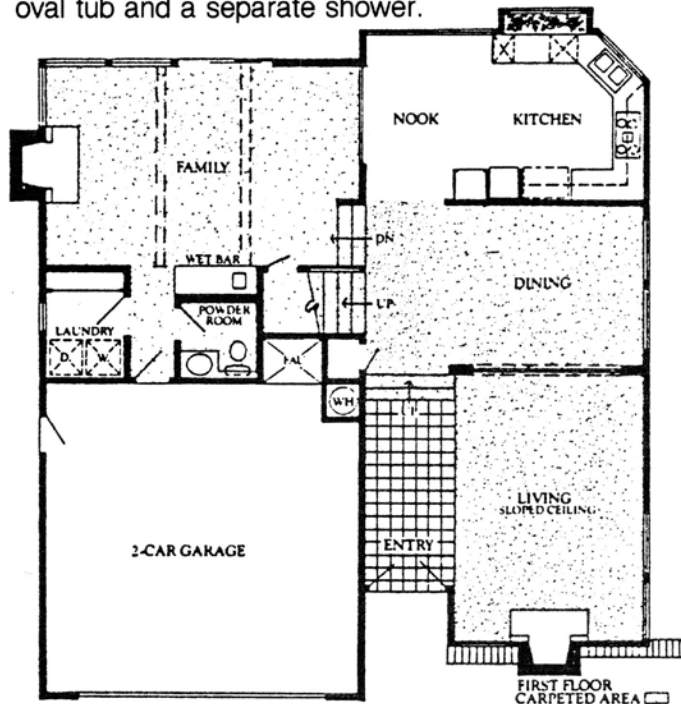
Plan 5942-4 bedrooms, 2½ baths

Double front doors open to a ceramic-tiled entry and a dramatically beautiful slope-ceilinged living room. A windowed corner and another wide window flank the living room's handsome fireplace. The charming formal dining room is defined by a graceful arch and a decorative wood railing. A big kitchen in-

cludes its own nook and an inside window box planter. The spacious family room has a built-in wet bar, the home's second fireplace and sliding glass patio doors. Bedrooms and baths are upstairs, three bedrooms sharing the compartmented central bath. The superb master suite includes a delightful separate sitting room, a separate dressing room with twin basins, a large walk-in closet and a compartmented bath with both oval tub and a separate shower.



SECOND FLOOR
WINDOW LOCATIONS PER ELEVATION



FIRST FLOOR
CARPETED AREA

The Manchester

Plan 6042 - 4 bedrooms, 2½ baths
3-car garage

Elegance keynotes this luxurious home. The soaring sloped ceiling of the tiled entryway extends into a spacious living room. A separate formal dining room with lowered ceiling is framed by graceful arches and decorative low railings. The kitchen, a bay windowed eating nook and the big family room "flow" into each other across the rear of the home, the kitchen with a wide window planter. The family room invites indoor-outdoor living with its fireplace and sliding glass patio doors. The three-car garage has enough space for a workshop area. Three bedrooms are upstairs including the magnificent master suite where you'll find the home's second fireplace and a whole windowed corner. The suite's compartmented bath offers an oval tub/shower adjacent to a built-in niche for houseplants in one section. The other section opens through sliding glass doors to a very private, walled sundeck.

