

# Coventry Homes

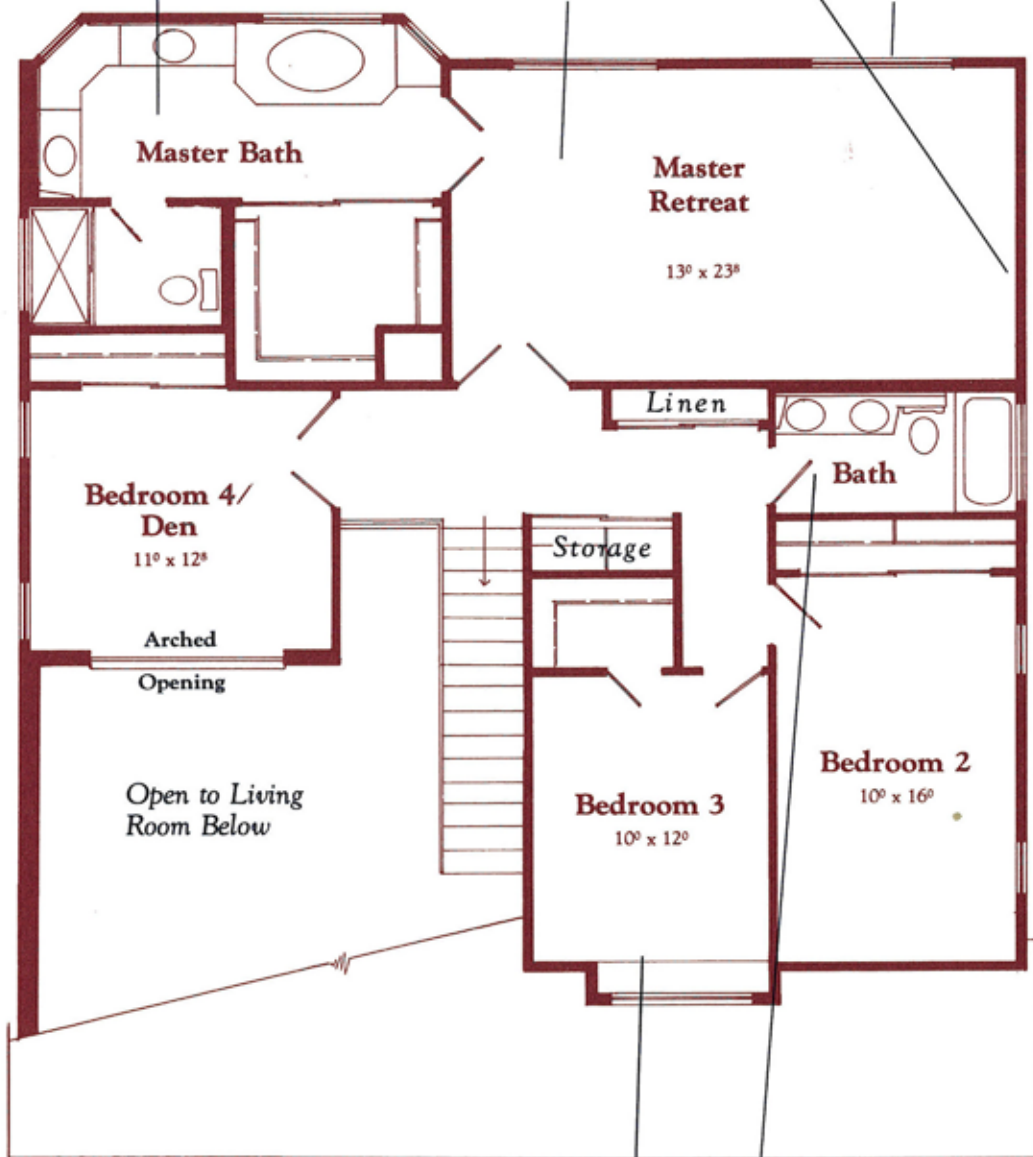
≈ 137,000

Bayed Master Bath with Marble Tub, Shower, Expansive Mirrors, Ample Closets

Over Sized Master Retreat with Double Door Entrance

Fireplace Included in Master Retreat

Optional Balcony



Box Bay Window

Large Hall Bath with Double Lavs

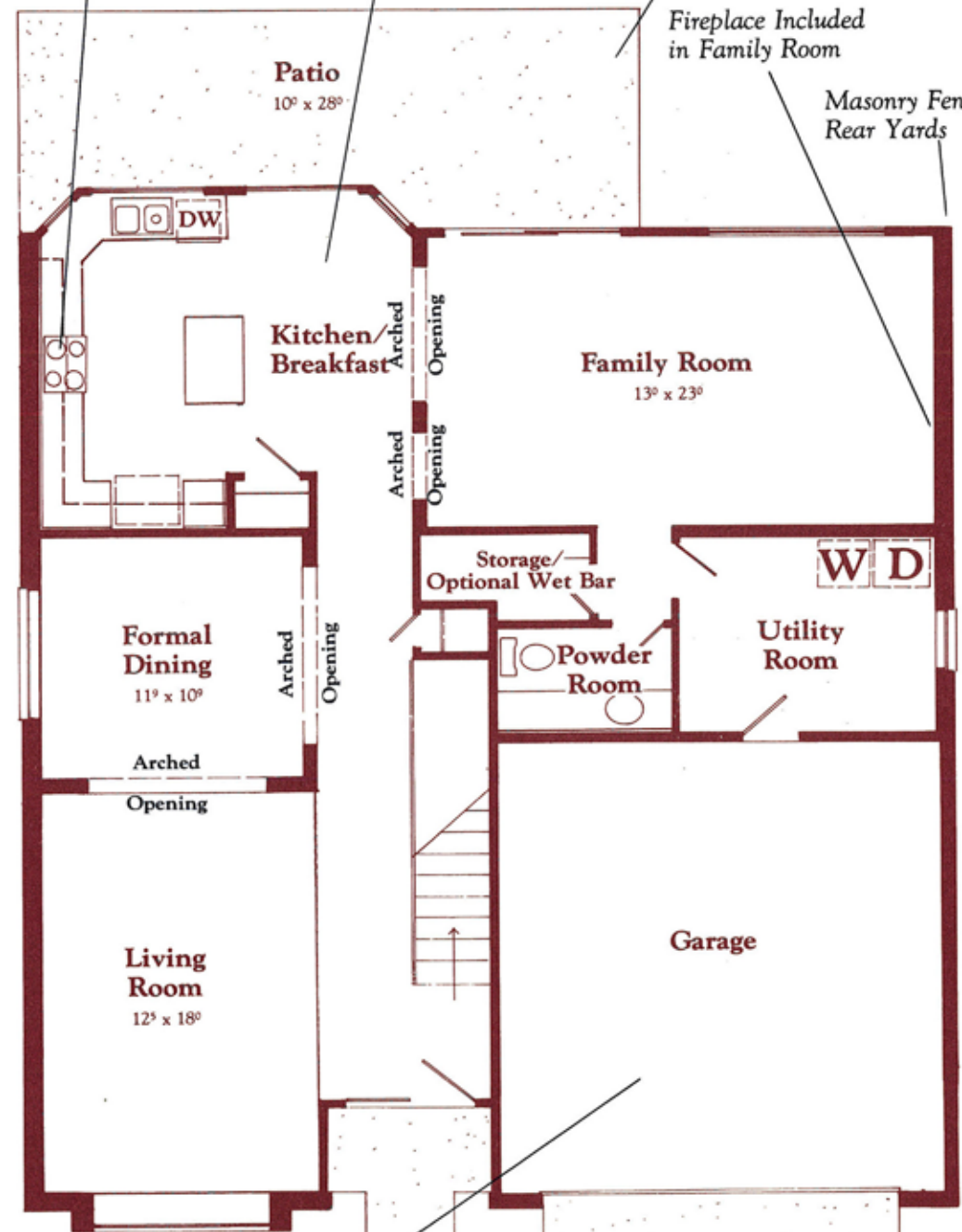
Whirlpool Combination Cooking Center: Self Cleaning Lower Oven, Eyelevel Microwave Oven

Huge Bayed Country Style Island Kitchen

Large Covered Patio

Fireplace Included in Family Room

Masonry Fenced Rear Yards



Optional 3rd Car Garage May Be Added

**Sequoia Plan 194**  
Living Area: 2727 Sq. Feet

Tree Lined Streets:  
1 Mature 24" Box Tree and 3 - 15 Gal. Trees in Front Yard.

**PLEASE NOTE:**

This floor plan and its exterior design (opposite side) are only artist renderings. Location, size, and existence of doors, windows, walls, fireplaces, and any other item depicted may vary depending on exterior preference or choice of options. Complete plans are available for inspection upon request.

**ALL DIMENSIONS ARE APPROXIMATE.**

Terms: VA, FHA or Conventional—all measurements shown are approximate. Prices, plans, benefits and locations subject to change without notice.

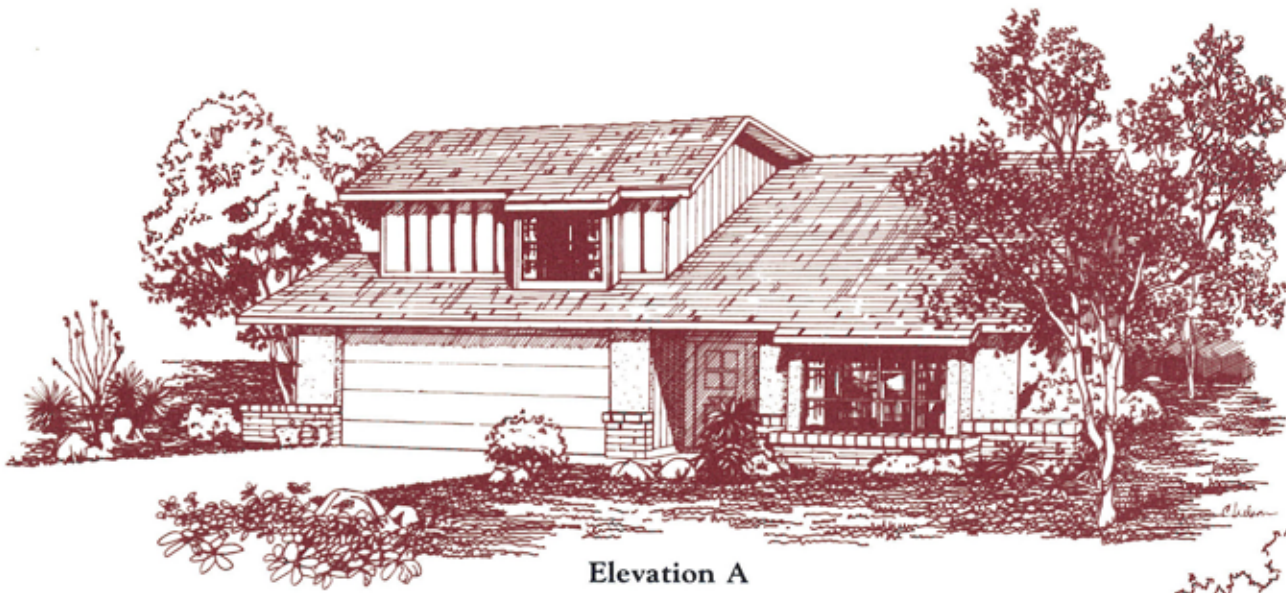
---

---

# Coventry Homes

---

---



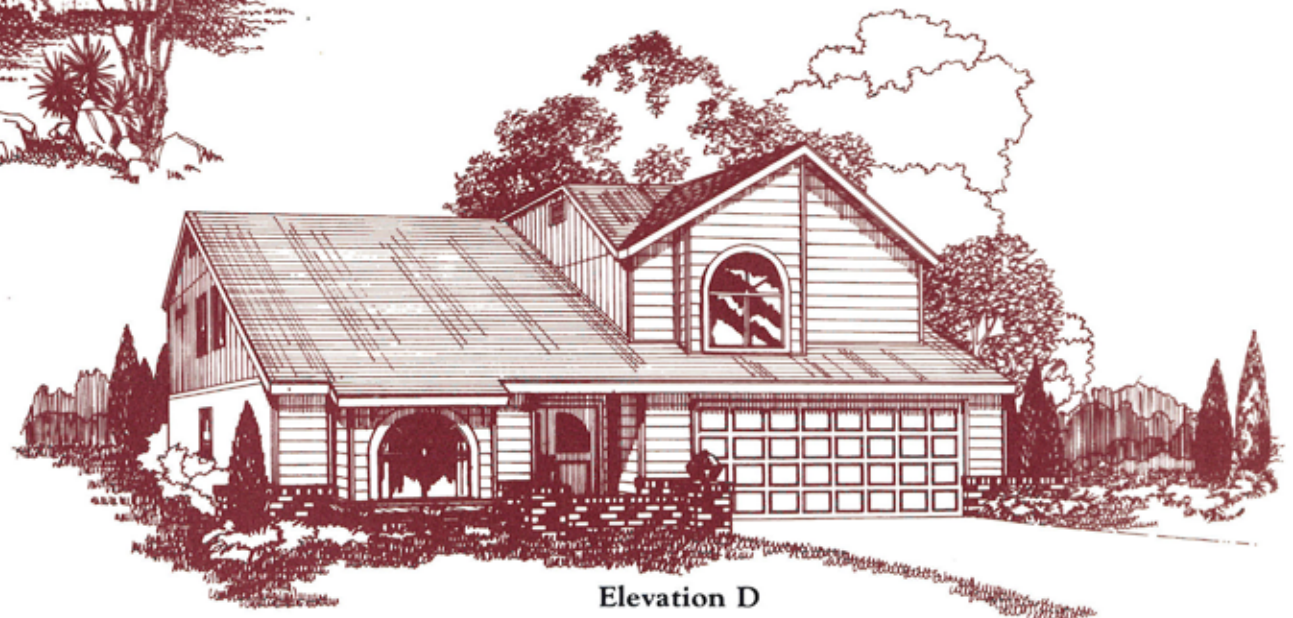
Elevation A



Elevation B



Elevation C



Elevation D

# Coventry Homes

Bayed Country Kitchen,  
Spacious Pantry, Island

Large Covered Patio

Patio  
10' x 21'

Patio  
8' x 10'

Spacious Master Retreat  
with Slider to Rear Yard

Masonry Fenced  
Rear Yard

Whirlpool Self-Cleaning  
Oven with Overhead Hood

Whirlpool Eye-Level  
Microwave Oven

Family Room\*  
15' x 18'

Master Retreat  
21' x 13'

Bath

Spacious Dressing  
Area with Mirrored  
Wardrobe Doors

Masonry Wood Burning  
fireplace Included  
in Family Room  
With Soaring Cathedral  
Ceiling

Bath

Bedroom 2  
12' x 10'

Impressive Formal  
Dining Room

Formal Dining\*  
13' x 10'

Optional  
Hutch  
Arched  
Opening

Linen

Bedroom 3  
14' x 11'

Extra Large Utility  
Room, Centrally Located

Double Doors may be  
Added as Optional  
Extra for Den

Arched  
Opening

Utility

Bedroom 4/  
Den  
10' x 12'

Sunken Living Room

Living Room\*  
13' x 17'

Garage

Three Car Garage  
With Direct  
Inside Access

\*Cathedral Ceiling

Tree Lined Streets:  
1 Mature 24" Box Tree  
and 3 - 15 Gal Trees  
in Front Yard.

ACACIA  
Plan 164  
Living Area: 2423 Sq. Feet

≈ 136,000

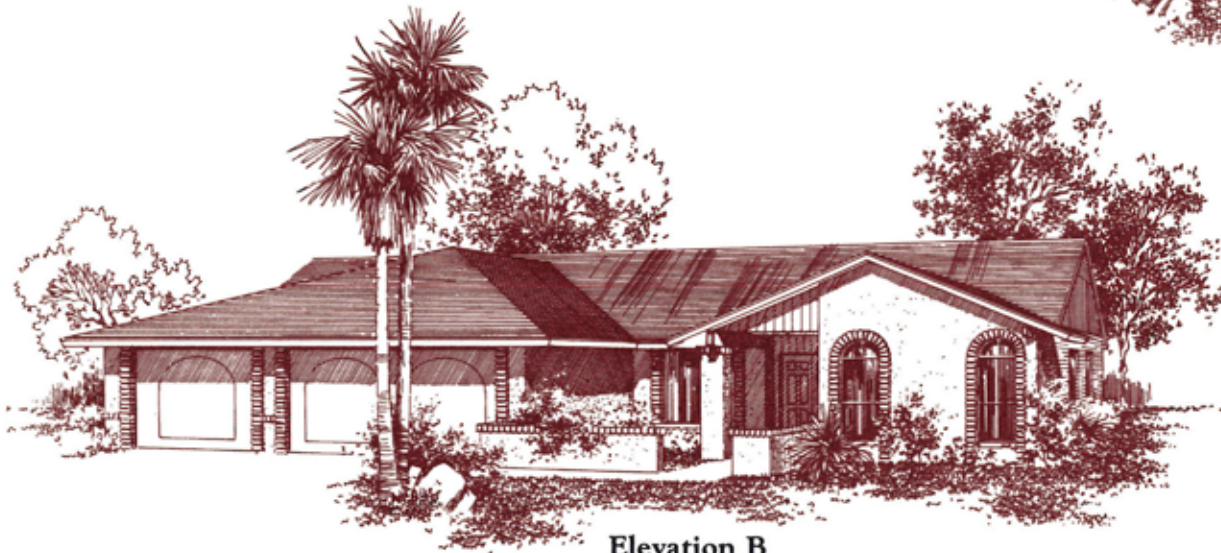
**PLEASE NOTE:**  
This floor plan and its exterior  
design (opposite side) are only artist  
renderings. Location, size, and  
existence of doors, windows, walls,  
fireplaces, and any other item  
depicted may vary depending on  
exterior preference or choice of  
options. Complete plans are available  
for inspection upon request.

**ALL DIMENSIONS  
ARE APPROXIMATE.**  
Terms: VA, FHA or Conventional—  
all measurements shown are approxi-  
mate. Prices, plans, benefits and loca-  
tions subject to change without notice.

# Coventry Homes



Elevation A



Elevation B

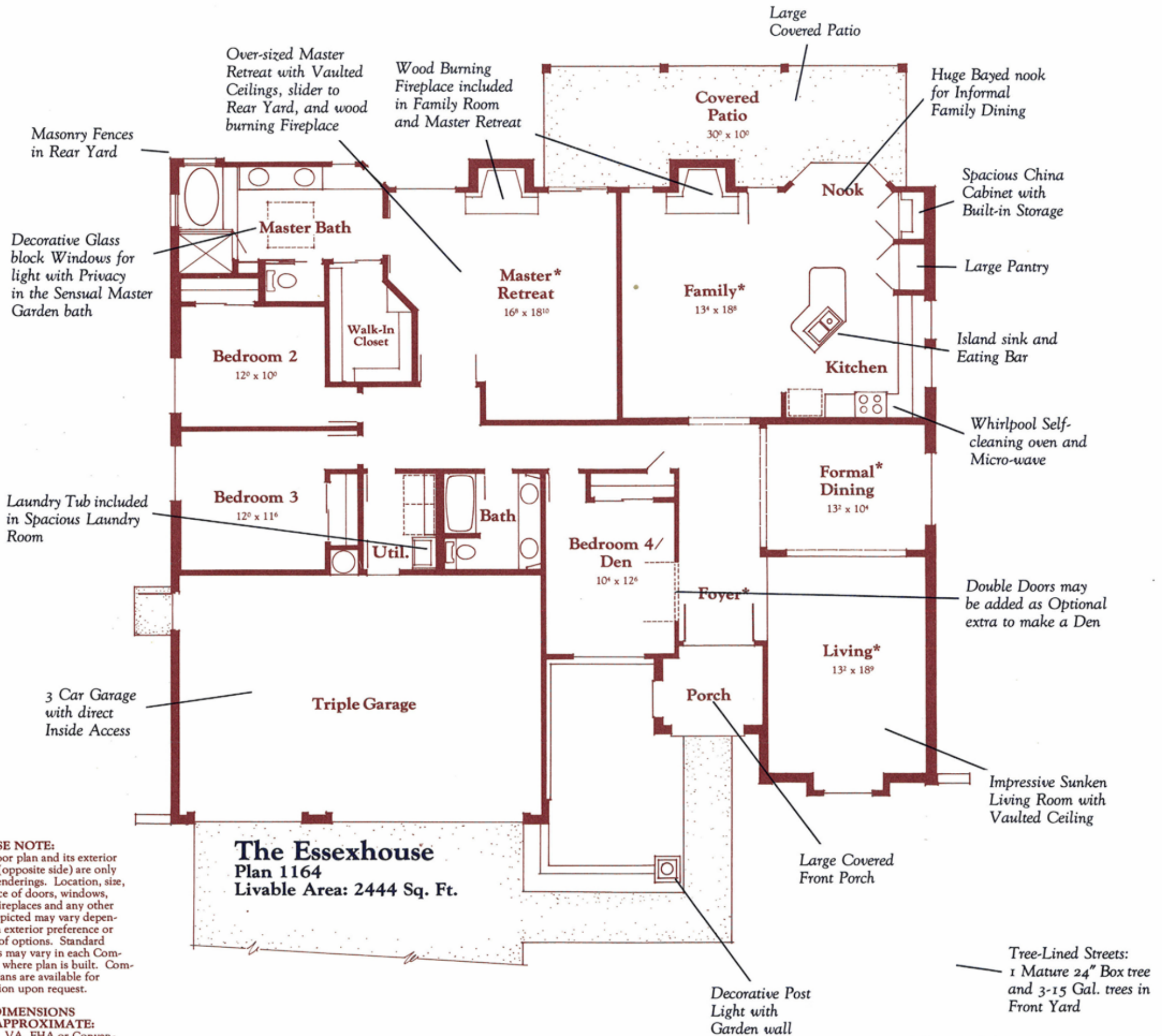


Elevation C



Elevation D

# COVENTRY



**The Essexhouse  
Plan 1164  
Livable Area: 2444 Sq. Ft.**

**PLEASE NOTE:**  
This floor plan and its exterior design (opposite side) are only artist renderings. Location, size, existence of doors, windows, walls, fireplaces and any other item depicted may vary depending on exterior preference or choice of options. Standard features may vary in each Community where plan is built. Complete plans are available for inspection upon request.

**ALL DIMENSIONS ARE APPROXIMATE:**  
Terms: VA, FHA or Conventional. Prices, plans, features and locations are subject to change without notice.

# COVENTRY



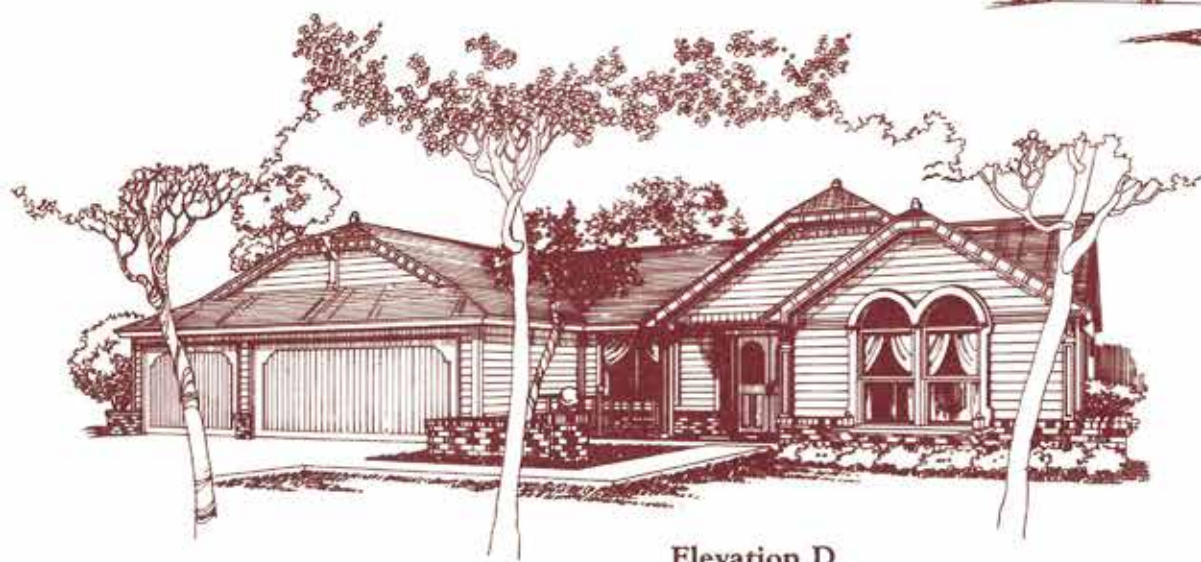
Elevation A



Elevation B



Elevation C



Elevation D