



1971 N. Hartford  
Chandler, Arizona 85224  
252-3251



*Artist's Rendition*

# TRADITIONAL TOWNHOMES





1971 N. Hartford  
Chandler, Arizona 85224  
252-3251

## TOWNHOME LIVING

*You don't have to settle for a Condo or Apartment. No one above you or below you, and you own the land.*

## ENJOY THE ART OF TOWNHOME LIVING

*Let the Homeowner Association manicure the landscaped surroundings as you enjoy the large swimming pool.*

## QUALITY CONSTRUCTION FEATURES

- A variety of thoughtfully designed floorplans and elevations.
- Underground utilities.
- Copper wiring on 110 volt circuits.
- Wood fenced rear courtyard for privacy and security.
- Prewired for telephones.
- Self-sealing shingles.
- Low voltage breakers in baths, and rear of home.
- Concrete walks, curbs and rear patio.
- Hose bibs – front and rear.
- Spacious outside storage, off rear patio.

## DISTINCTIVE INTERIOR TREATMENTS

- Dramatic vaulted ceilings throughout all bedrooms.
- Luxurious wall-to-wall carpeting in bedrooms, hall and living areas.

- Beautiful French doors leading to rear patios.
- Designer selection of no-wax sheet vinyl in kitchen and bath areas.
- Front entry doors with deadbolts.
- Smoke detectors for family safety.
- Custom plant shelves standard in all models.
- Hookups for washer and 220 volt outlet and vent for dryer.

## CUSTOM-CRAFTED KITCHENS

- Refrigerator.
- Dishwasher.
- Quality range and oven with 2 speed fan & light.
- Sturdy disposal.
- Beautiful hardwood cabinets.
- Easy to clean laminated countertops.
- Stainless steel double sink.

## EXTRAORDINARY ELEGANCE IN BATH DESIGN

- Expansive plate glass mirrors.
- Ceramic tile tub and shower surrounds.
- Fiberglass tubs.
- Cultured marble vanity tops and bowls.
- Mirrored medicine cabinets.
- Custom-crafted hardwood vanity cabinets.
- Convenient 1st floor powder room.

## ENERGY ENGINEERED FEATURES

- Water-saver showers, toilets and all other plumbing fixtures.
- High efficiency heat pumps for heating and cooling.
- R-30 ceiling insulation along with R-13 batt insulation in frame walls surrounding livable areas.
- Long-life 40 gallon hot-water heater.
- Weather stripping or caulking around all exterior openings.
- Energy Value Award Home.

## OPTIONAL EXTRAS YOU MAY CHOOSE TO CUSTOMIZE YOUR HOME

- Fireplaces in various designs and colors.
- Upgraded flooring.
- Mirrored wardrobe doors.
- Self-Clean ovens.
- Additional second baths (some plans).
- Ceiling fan outlets with switch.

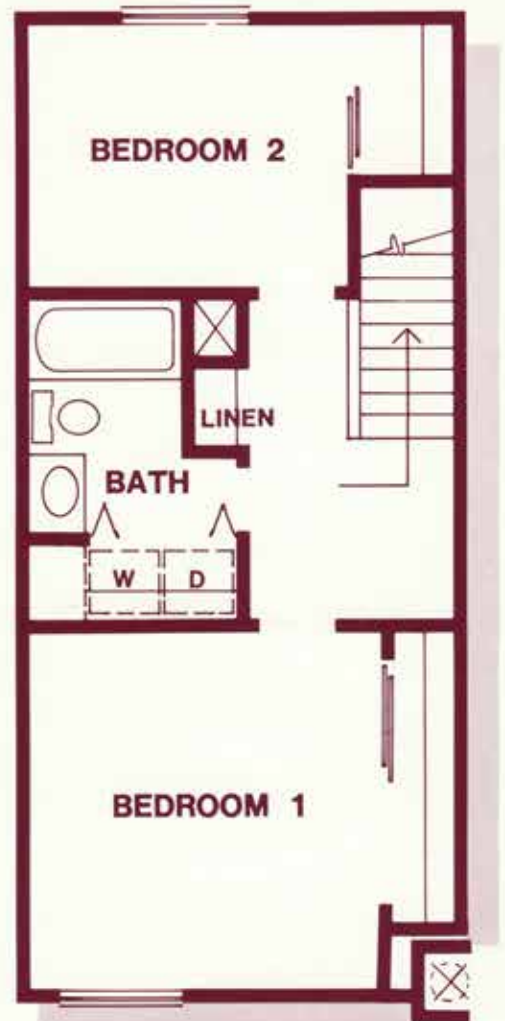
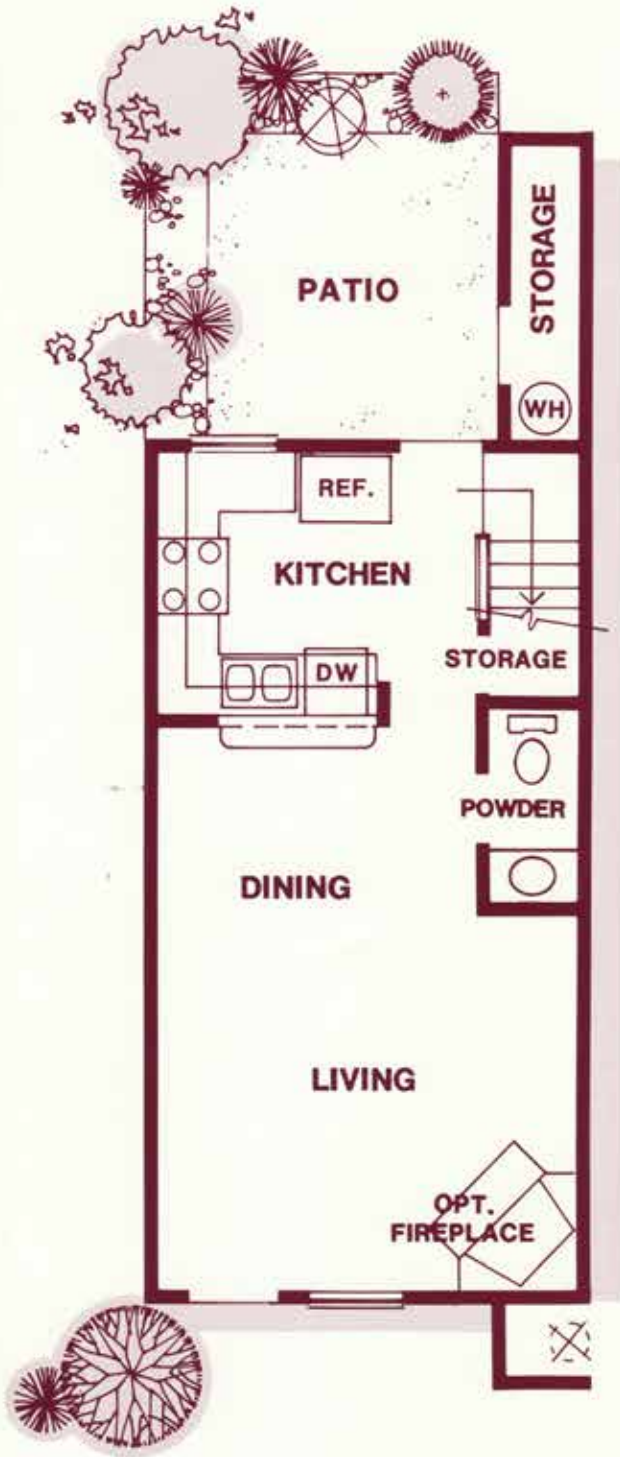


Pulte Home Corporation reserves the right to modify all plans and/or specifications without notice or obligation. All renderings are artist's conceptions. Prices subject to change without notice.





1971 N. Hartford  
Chandler, Arizona 85224  
252-3251



HARTFORD II PLAN 870

\*All floor plans subject to change without notice.





1971 N. Hartford  
Chandler, Arizona 85224  
252-3251



CAMBRIDGE PLAN 1056

\*All floor plans subject to change without notice.





1971 N. Hartford  
Chandler, Arizona 85224  
252-3251



LEXINGTON PLAN 1200

\*All floor plans subject to change without notice.





1971 N. Hartford  
Chandler, Arizona 85224  
252-3251

HOURS: Mon. - Thurs.:  
Noon - 8 p.m.  
Fri.: Noon - 6 p.m.  
Sat. and Sun.:  
10 a.m. - 6 p.m.

HARTFORD II PLAN 870 \$ 52,990

- \* Two Bedrooms
- \* 1½ Baths

CAMBRIDGE PLAN 1056 \$ 57,990

- \* Two Bedrooms
- \* 1½ Baths
- \* Optional Third Bathroom

LEXINGTON PLAN 1200 \$ 60,990

- \* Two Bedrooms
- \* 1½ Baths
- \* Optional Third Bedroom
- \* Optional Third Bathroom

April 13, 1984



1971 N. Hartford  
Chandler, Arizona 85224  
252-3251

## QUALITY CONSTRUCTION FEATURES

- \* A Variety of thoughtfully designed floorplans and elevations.
- \* Underground utilities.
- \* Copper wiring on 110 volt circuits.
- \* 6' wood fenced rear courtyard for privacy and security.
- \* Prewired for telephones.
- \* Self-sealing shingles
- \* Low voltage breakers in baths, and rear of home.
- \* Concrete walks, curbs, and rear patio.
- \* Hose bibs - front and rear.
- \* Spacious outside storage, off rear patio.

## DISTINCTIVE INTERIOR TREATMENTS

- \* Dramatic vaulted ceilings throughout all bedrooms.
- \* Luxurious wall-to-wall carpeting in bedrooms, hall and living areas.
- \* Beautiful french doors leading to rear patios.
- \* Designer selection of no-wax sheet vinyl in kitchen and bath areas.
- \* Front entry doors with deadbolts.
- \* Smoke detectors for family safety.
- \* Custom plant shelves standard in all models.
- \* Hookups for washer and 220 volt outlet and vent for dryer.

**TOWNHOME LIVING** . You don't have to settle for a Condo or Apartment. No one above you or below you, and you own the land.

## **ENJOY the ART of TOWNHOME LIVING**

Let the Homeowner Association manicure the landscaped surroundings as you enjoy the large swimming pool

## **DISCOVER THE PULTE DIFFERENCE**

### CUSTOM-CRAFTED KITCHENS

- \* Frost-free Refrigerator
- \* Dishwasher.
- \* Quality range and oven with 2 speed fan & light.
- \* Sturdy disposal.
- \* Beautiful hardwood cabinets.
- \* Easy to clean laminated countertops.
- \* Stainless steel double sink.

### EXTRAORDINARY ELEGANCE IN BATH DESIGN

- \* Expansive plate glass mirrors.
- \* Ceramic tile tub and shower surrounds.
- \* Fiberglass tubs
- \* Cultured marble vanity tops and bowls.
- \* Mirrored medicine cabinets
- \* Custom-crafted hardwood vanity cabinets.
- \* Convenient 1st floor powder room.

### ENERGY ENGINEERED FEATURES

- \* Water-saver showers, toilets, and all other plumbing fixtures.
- \* High efficiency heat pumps for heating and cooling.
- \* R-30 ceiling insulation along with R-13 batt insulation in frame walls surrounding liveable areas.
- \* Long-life 40 gallon hot-water heater.
- \* Weather stripping or caulking around all exterior openings.

### OPTIONAL EXTRAS YOU MAY CHOOSE TO CUSTOMIZE YOUR HOME

- \* Energy Value Award Home
- \* Fireplaces in various designs and colors.
- \* Upgraded flooring.
- \* Mirrored wardrobe doors
- \* Self-Clean ovens.
- \* Additional second baths (some plans).
- \* Ceiling fan outlets with switch.