



1971 N. Hartford
Chandler, Arizona 85224
252-3251



Artist's Rendition

TRADITIONAL TOWNHOMES





1971 N. Hartford
Chandler, Arizona 85224
252-3251

TOWNHOME LIVING

You don't have to settle for a Condo or Apartment. No one above you or below you, and you own the land.

ENJOY THE ART OF TOWNHOME LIVING

Let the Homeowner Association manicure the landscaped surroundings as you enjoy the large swimming pool.

QUALITY CONSTRUCTION FEATURES

- A variety of thoughtfully designed floorplans and elevations.
- Underground utilities.
- Copper wiring on 110 volt circuits.
- Wood fenced rear courtyard for privacy and security.
- Prewired for telephones.
- Self-sealing shingles.
- Low voltage breakers in baths, and rear of home.
- Concrete walks, curbs and rear patio.
- Hose bibs – front and rear.
- Spacious outside storage, off rear patio.

DISTINCTIVE INTERIOR TREATMENTS

- Dramatic vaulted ceilings throughout all bedrooms.
- Luxurious wall-to-wall carpeting in bedrooms, hall and living areas.

- Beautiful French doors leading to rear patios.
- Designer selection of no-wax sheet vinyl in kitchen and bath areas.
- Front entry doors with deadbolts.
- Smoke detectors for family safety.
- Custom plant shelves standard in all models.
- Hookups for washer and 220 volt outlet and vent for dryer.

CUSTOM-CRAFTED KITCHENS

- Refrigerator.
- Dishwasher.
- Quality range and oven with 2 speed fan & light.
- Sturdy disposal.
- Beautiful hardwood cabinets.
- Easy to clean laminated countertops.
- Stainless steel double sink.

EXTRAORDINARY ELEGANCE IN BATH DESIGN

- Expansive plate glass mirrors.
- Ceramic tile tub and shower surrounds.
- Fiberglass tubs.
- Cultured marble vanity tops and bowls.
- Mirrored medicine cabinets.
- Custom-crafted hardwood vanity cabinets.
- Convenient 1st floor powder room.

ENERGY ENGINEERED FEATURES

- Water-saver showers, toilets and all other plumbing fixtures.
- High efficiency heat pumps for heating and cooling.
- R-30 ceiling insulation along with R-13 batt insulation in frame walls surrounding livable areas.
- Long-life 40 gallon hot-water heater.
- Weather stripping or caulking around all exterior openings.
- Energy Value Award Home.

OPTIONAL EXTRAS YOU MAY CHOOSE TO CUSTOMIZE YOUR HOME

- Fireplaces in various designs and colors.
- Upgraded flooring.
- Mirrored wardrobe doors.
- Self-Clean ovens.
- Additional second baths (some plans).
- Ceiling fan outlets with switch.

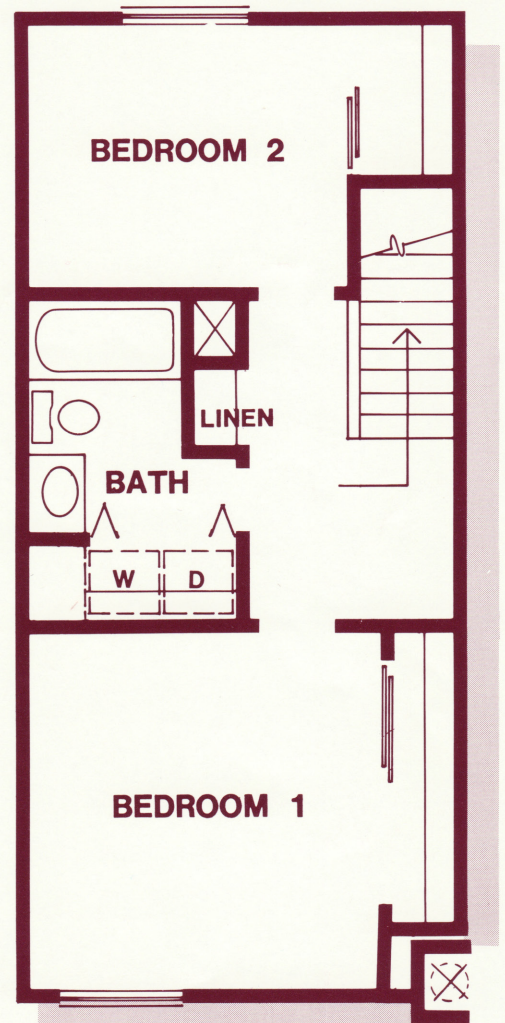
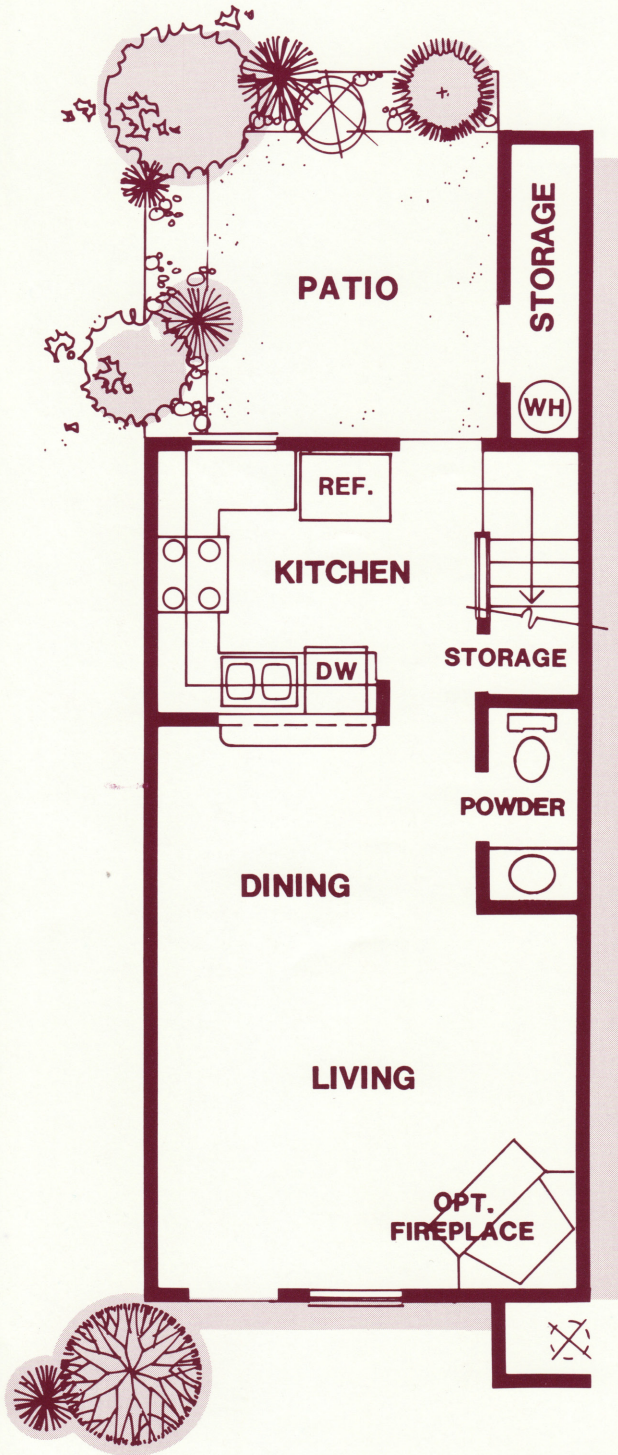


Pulte Home Corporation reserves the right to modify all plans and/or specifications without notice or obligation. All renderings are artist's conceptions. Prices subject to change without notice.





1971 N. Hartford
Chandler, Arizona 85224
252-3251



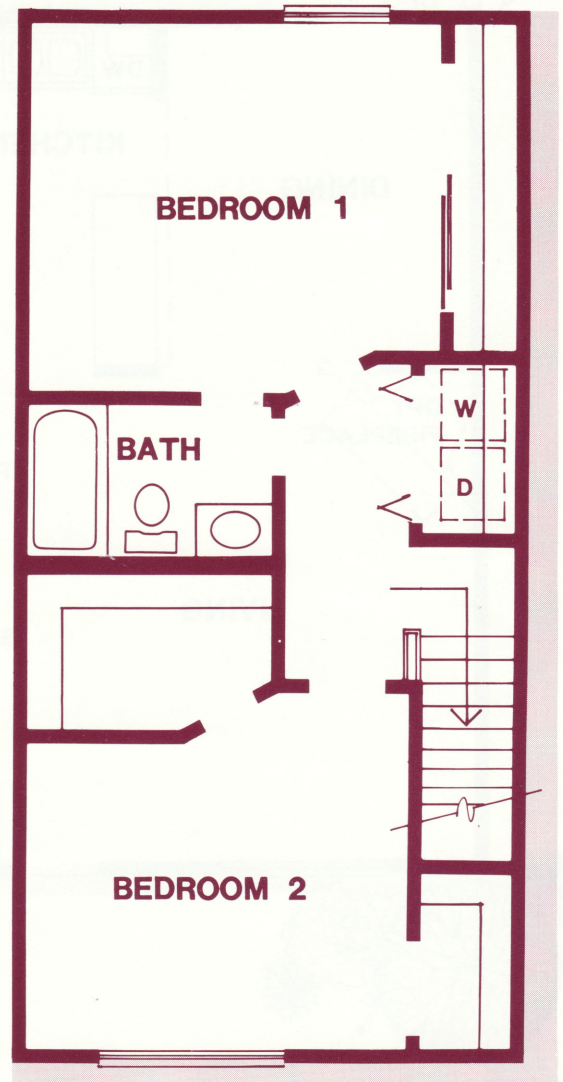
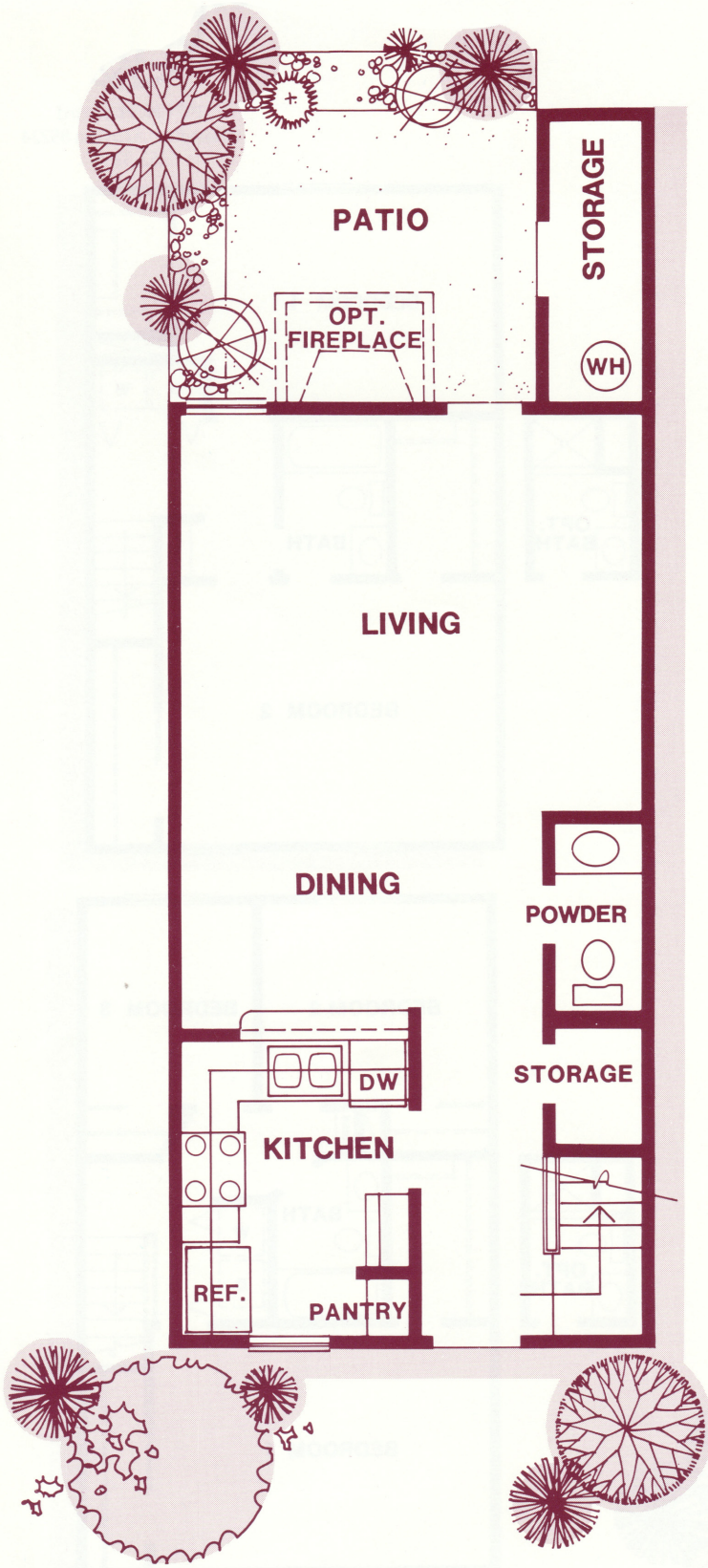
HARTFORD II PLAN 870

*All floor plans subject to change without notice.





1971 N. Hartford
Chandler, Arizona 85224
252-3251



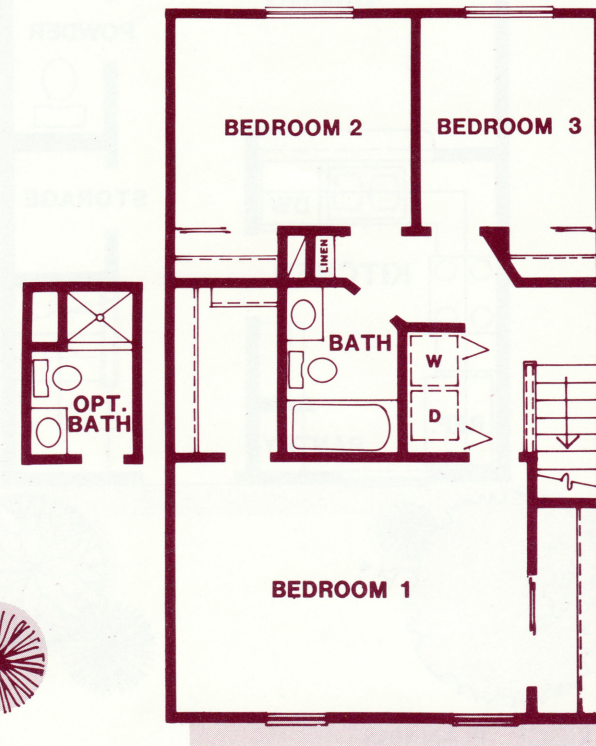
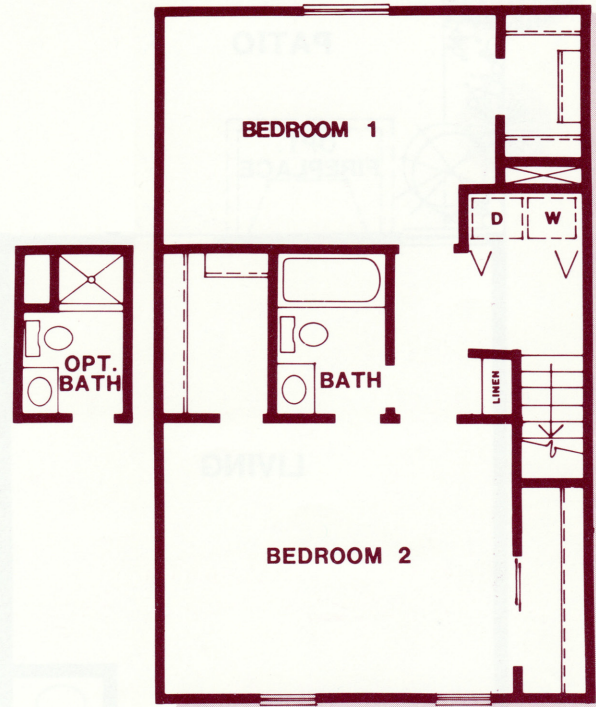
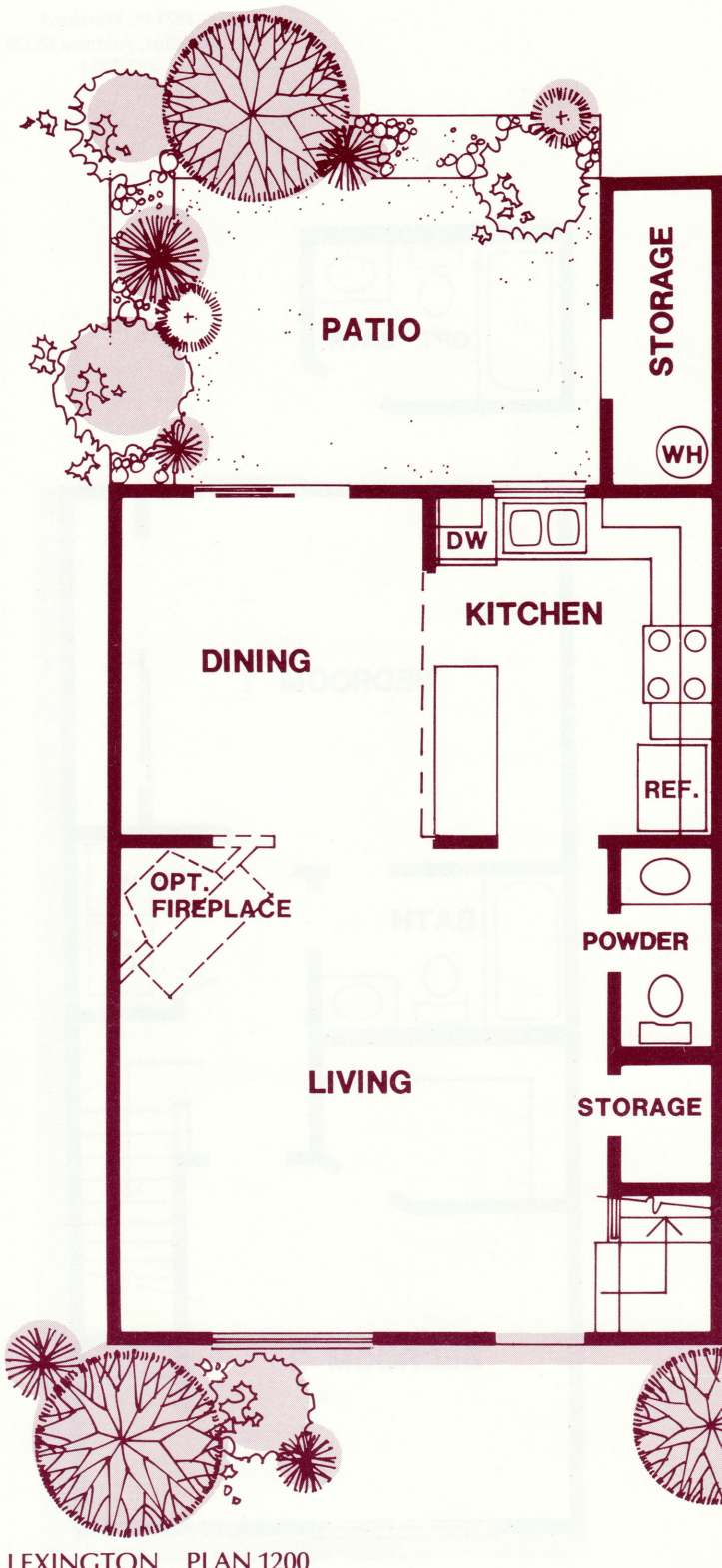
CAMBRIDGE PLAN 1056

*All floor plans subject to change without notice.





1971 N. Hartford
Chandler, Arizona 85224
252-3251



LEXINGTON PLAN 1200

*All floor plans subject to change without notice.





1971 N. Hartford
Chandler, Arizona 85224
252-3251

HOURS: Mon. - Thurs.:
Noon - 8 p.m.
Fri.: Noon - 6 p.m.
Sat. and Sun.:
10 a.m. - 6 p.m.

HARTFORD II PLAN 870 \$ 52,990

- * Two Bedrooms
- * 1½ Baths

CAMBRIDGE PLAN 1056 \$ 57,990

- * Two Bedrooms
- * 1½ Baths
- * Optional Third Bathroom

LEXINGTON PLAN 1200 \$ 60,990

- * Two Bedrooms
- * 1½ Baths
- * Optional Third Bedroom
- * Optional Third Bathroom

April 13, 1984



1971 N. Hartford
Chandler, Arizona 85224
252-3251

QUALITY CONSTRUCTION FEATURES

- * A variety of thoughtfully designed floorplans and elevations.
- * Underground utilities.
- * Copper wiring on 110 volt circuits.
- * 6' wood fenced rear courtyard for privacy and security.
- * Prewired for telephones.
- * Self-sealing shingles
- * Low voltage breakers in baths, and rear of home.
- * Concrete walks, curbs, and rear patio.
- * Hose bibs - front and rear.
- * Spacious outside storage, off rear patio.

DISTINCTIVE INTERIOR TREATMENTS

- * Dramatic vaulted ceilings throughout all bedrooms.
- * Luxurious wall-to-wall carpeting in bedrooms, hall and living areas.
- * Beautiful french doors leading to rear patios.
- * Designer selection of no-wax sheet vinyl in kitchen and bath areas.
- * Front entry doors with deadbolts.
- * Smoke detectors for family safety.
- * Custom plant shelves standard in all models.
- * Hookups for washer and 220 volt outlet and vent for dryer.

TOWNHOME LIVING . You don't have to settle for a Condo or Apartment. No one above you or below you, and you own the land.

ENJOY the ART of TOWNHOME LIVING

Let the Homeowner Association manicure the landscaped surroundings as you enjoy the large swimming pool

DISCOVER THE PULTE DIFFERENCE

CUSTOM-CRAFTED KITCHENS

- * Frost-free Refrigerator
- * Dishwasher.
- * Quality range and oven with 2 speed fan & light.
- * Sturdy disposal.
- * Beautiful hardwood cabinets.
- * Easy to clean laminated countertops.
- * Stainless steel double sink.

EXTRAORDINARY ELEGANCE IN BATH DESIGN

- * Expansive plate glass mirrors.
- * Ceramic tile tub and shower surrounds.
- * Fiberglass tubs
- * Cultured marble vanity tops and bowls.
- * Mirrored medicine cabinets
- * Custom-crafted hardwood vanity cabinets.
- * Convenient 1st floor powder room.

ENERGY ENGINEERED FEATURES

- * Water-saver showers, toilets, and all other plumbing fixtures.
- * High efficiency heat pumps for heating and cooling.
- * R-30 ceiling insulation along with R-13 batt insulation in frame walls surrounding liveable areas.
- * Long-life 40 gallon hot-water heater.
- * Weather stripping or caulking around all exterior openings.

OPTIONAL EXTRAS YOU MAY CHOOSE TO CUSTOMIZE YOUR HOME

- * Fireplaces in various designs and colors.
- * Upgraded flooring.
- * Mirrored wardrobe doors
- * Self-Clean ovens.
- * Additional second baths (some plans).
- * Ceiling fan outlets with switch.