

# Mission Del Monte

Mission Oaks ■ Camarillo, California

HOMES BY PARDEE CONSTRUCTION COMPANY



Plan 3



Plan 1



Plan 2



Plan 4

# Mission Del Monte

5367 Quailridge Dr. • Camarillo, CA 93010 • (805) 987-3154 • (805) 987-3007

## Standard Features

- Distinctive paned windows on front elevations
- Formal entries and spacious living rooms with dramatic vaulted ceilings
- Plan # 4 features raised entry
- Formal dining rooms
- Kitchens equipped with built-in dishwasher, disposal and gas range featuring self-cleaning double ovens with black glass door
- Greenhouse windows
- Stained hardwood kitchen cabinets and pantry
- Ceramic tile kitchen counters featuring double sink with single-level faucet
- Refrigerator space plumbed for automatic ice-maker
- Breakfast nook—Plan # 4
- Large family rooms include brick-faced fireplace with gas log lighter
- Plan # 4 family room features built-in wet bar
- Carpet included in living room, dining room, master bedroom, and all secondary bedrooms, halls and stairways
- No-wax Solarian tile included in entry, kitchen, family room and nook (Plan # 4)
- All plans feature decorator selected light fixtures
- King-size master bedrooms with generous wardrobe closets
- Stained hardwood linen cabinets
- All bath pullmans include Corian counter tops and stained hardwood cabinets
- Twin pullmans in master bath
- Oval tub in master bath

- Fully insulated exterior walls and ceiling
- Pre-wired for Cable T.V.
- Forced air heating
- Smoke detector with warning buzzer
- Weather stripping on front entry door and garage entry door
- Laundry area and family size water heater, located in garage with direct house access
- Medium cedar shake roof
- The "C" elevation of each plan features concrete tile roofs
- Unique courtyard entrance in Plans 2 and 4
- Front, side and rear lawns seeded with two trees planted
- Private fenced garden area off of master bath in Plans 1 and 2

## Energy Saving Features

- Pilotless ignition gas range and oven
- Climate control clock thermostat
- Water-saver plumbing innovations
- Thermal insulating fiberglass ducting

## Optional Features (available at additional cost)

- Central refrigerated air conditioning
- Upgrade carpet and pad
- Garage door openers
- Upgrade entry floor materials
- Mirrored wardrobe doors
- Gas range with built-in microwave oven
- Master bedroom retreat in Plan # 2 (pre-plotted)\*
- Den doors in Plan # 1 (pre-plotted)\*

\*Available at no additional cost

Certain models have carpet or flooring not included in the sales price. Our sales price includes carpet, and Solarian no-wax vinyl tile only in those areas specifically listed under "Standard Features." Decorator items and model landscaping are not included in the purchase price. Our models have been professionally decorated in order to give you ideas as to how each home may be furnished. Items such as wallpaper, custom paint colors, custom carpet and flooring, plants, drapes, mirrors, beams, painting, wall hangings, and furnishings are decorator items and are not included in the sales price.

The items listed herein, with the exception of Optional Features listed above, are presently being included in all houses, except where indicated otherwise. Some of these items are manufactured and supplied by other companies for installation into Pardee homes. We reserve the right to substitute manufacturers and to make substitutions of color due to the unavailability of a particular item from a particular manufacturer or for other reasons. Certain items included in our homes are warranted by the individual manufacturers and/or suppliers. Binders containing

copies of these warranties are available for inspection, upon request, in our Sales Office.

Prices, terms and specifications are subject to change without notice. Prices do not include lot premiums and optional items.

In the interest of continuous improvement and to meet changing market conditions, we reserve the right to modify, relocate or eliminate any or all of the features, specifications, plans, utilities, appliances, products and/or exteriors described herein and to change the design, size or shape thereof, all without any notice or obligation to any purchaser. (Renderings are artists' conception.) (11-6-81)



EQUAL HOUSING  
OPPORTUNITY

Photographs by John Durant

## Southern California is alive and well in Mission Oaks.

There's something very special about Mission Del Monte. You can see it in the beautiful architectural design of each of the four models; and you can see it in the floorplans—roomy and filled with luxury amenities. Look closer and you'll see the special harmony between these homes and their natural environment—the rolling green hills of Mission Oaks.

Mission Del Monte is built in a location immersed in beauty and rich with early California history. For over 80 years the Mission Oaks area was known as Rancho Camarillo—legendary as one of the most beautiful ranchos in Southern California.

Today much of the open space and picturesque quality from the past has been preserved. Pardee Construction Company has carefully planned

Mission Oaks to provide for the most efficient and pleasing use of land for just the right number of people. Residents of four neighborhoods enjoy a well-balanced community that includes schools, parks, convenience shopping, a business park and the nearby town of Camarillo.

When you live at Mission Del Monte everything you need or want is so close to home. Just a short distance to the west awaits the beaches and recreation areas of Ventura. Access to San Fernando Valley and Los Angeles employment and educational

opportunities are commuter-close. And you can shop just minutes from home in Camarillo or nearby Thousand Oaks.

Mission Del Monte, surrounded by rolling hills and groves of citrus trees, is truly a very special place to live.

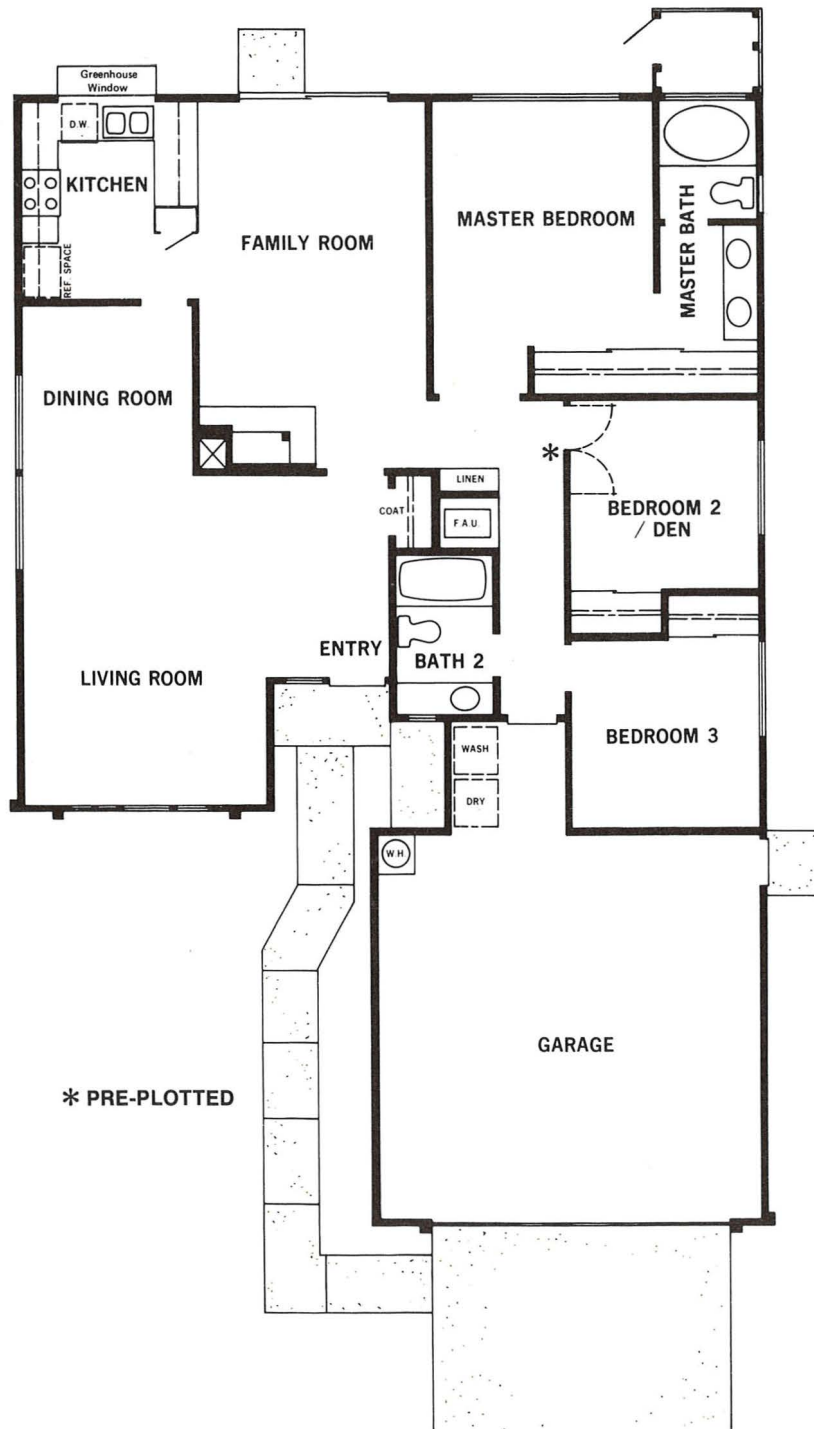


**Pardee**  
Construction Company  
A Weyerhaeuser Company

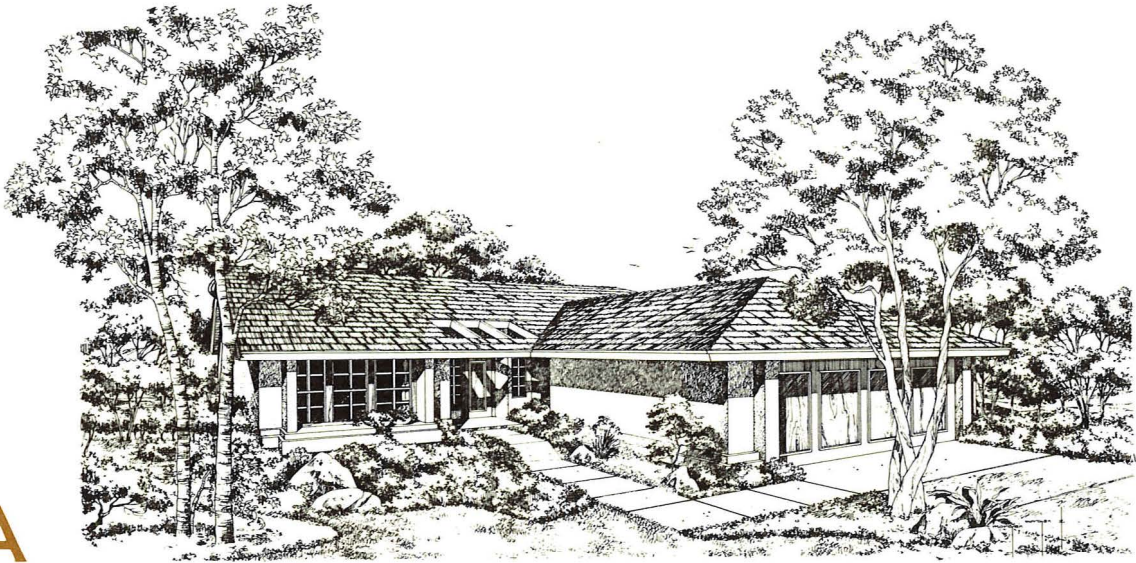
# Plan 1

Entertaining is easy in this bright and open three bedroom home. Dramatic vaulted ceilings highlight the large living room and adjacent formal dining area. You'll find the heart of this 1,443 square foot home is a pleasant family room featuring a brick-faced fireplace with gas log lighter. Just off the family room is the kitchen,

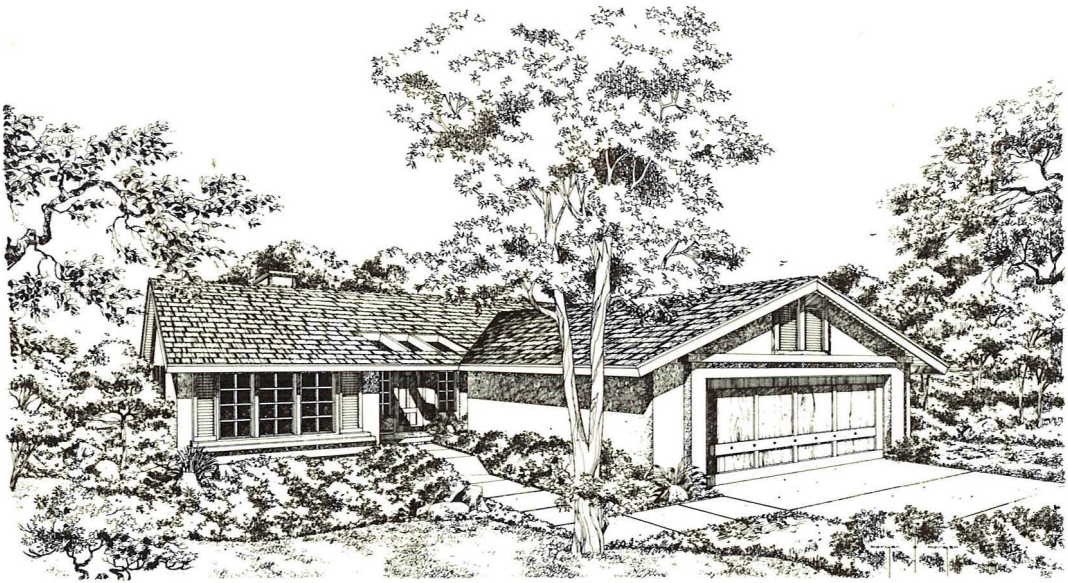
complete with built-in dishwasher, gas range and self-cleaning double oven—plus a sunny greenhouse window. The master bedroom suite has lots of closet space and an elegant master bath with picturesque atrium. A second bedroom (makes a great den!) and third bedroom share another full bath.



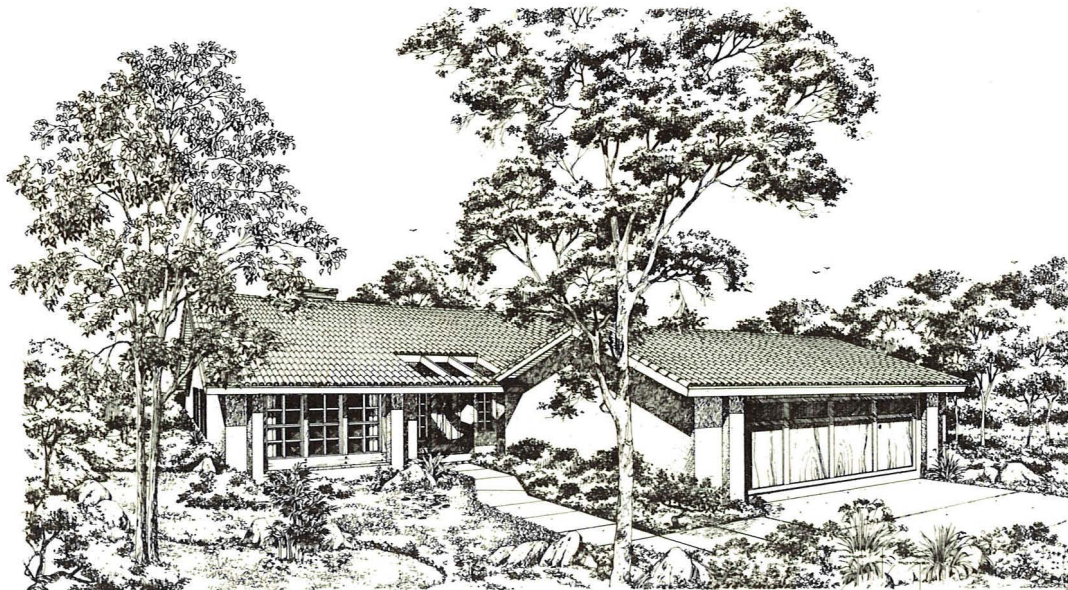
1A



1B



1C

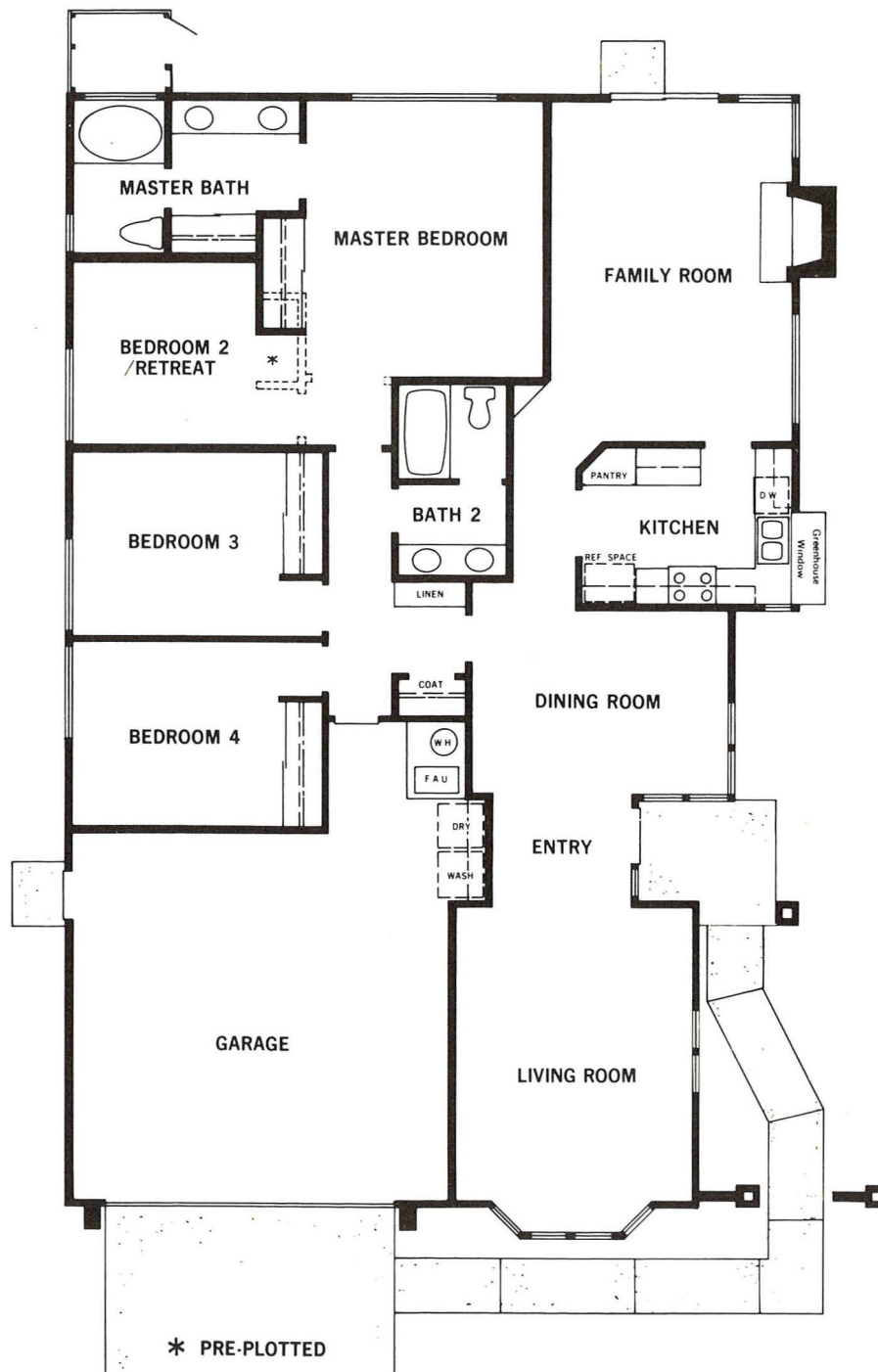


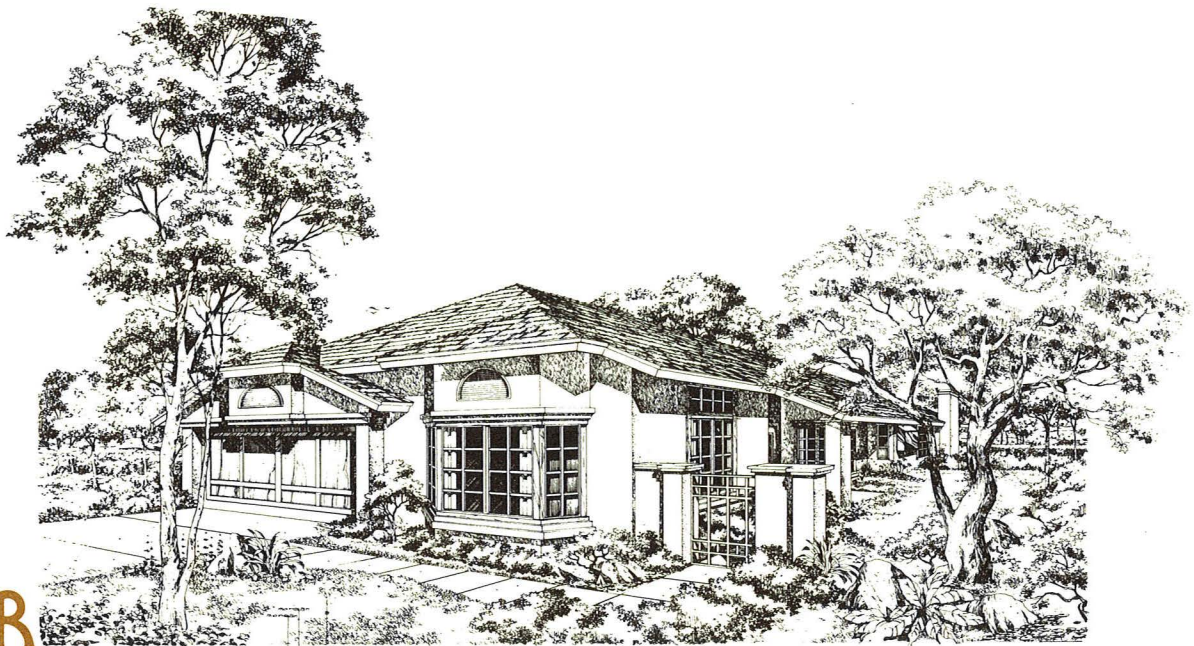
# Plan 2R

With over 1,700 square feet of living space in Plan 2 your family is sure to have plenty of room to live and play for years to come.

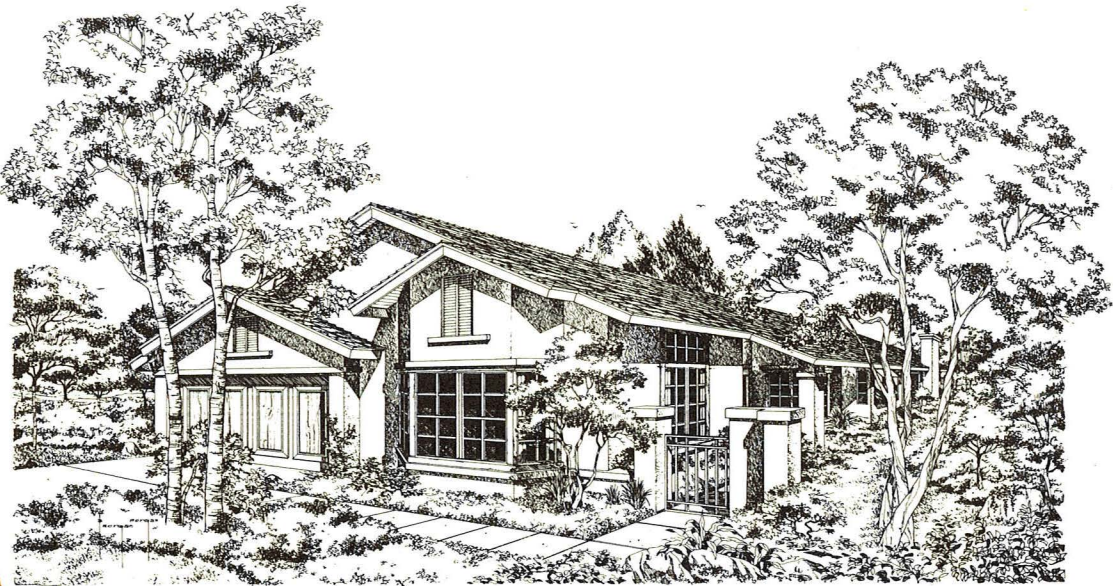
Enter this four-bedroom, two-bath house through a charming courtyard. You'll find a big bay window in the living room, a cozy fireplace in the family room and formal dining area convenient

to the kitchen. Along with built-in appliances, there's a handy pantry in the kitchen. The elegant master bedroom suite features the option of a unique sitting room/den area versus a secondary bedroom in pre-plotted elevations. This room truly is a "suite" with its own luxurious bathroom— with double sinks, oval tub and garden atrium.





2AR



2BR

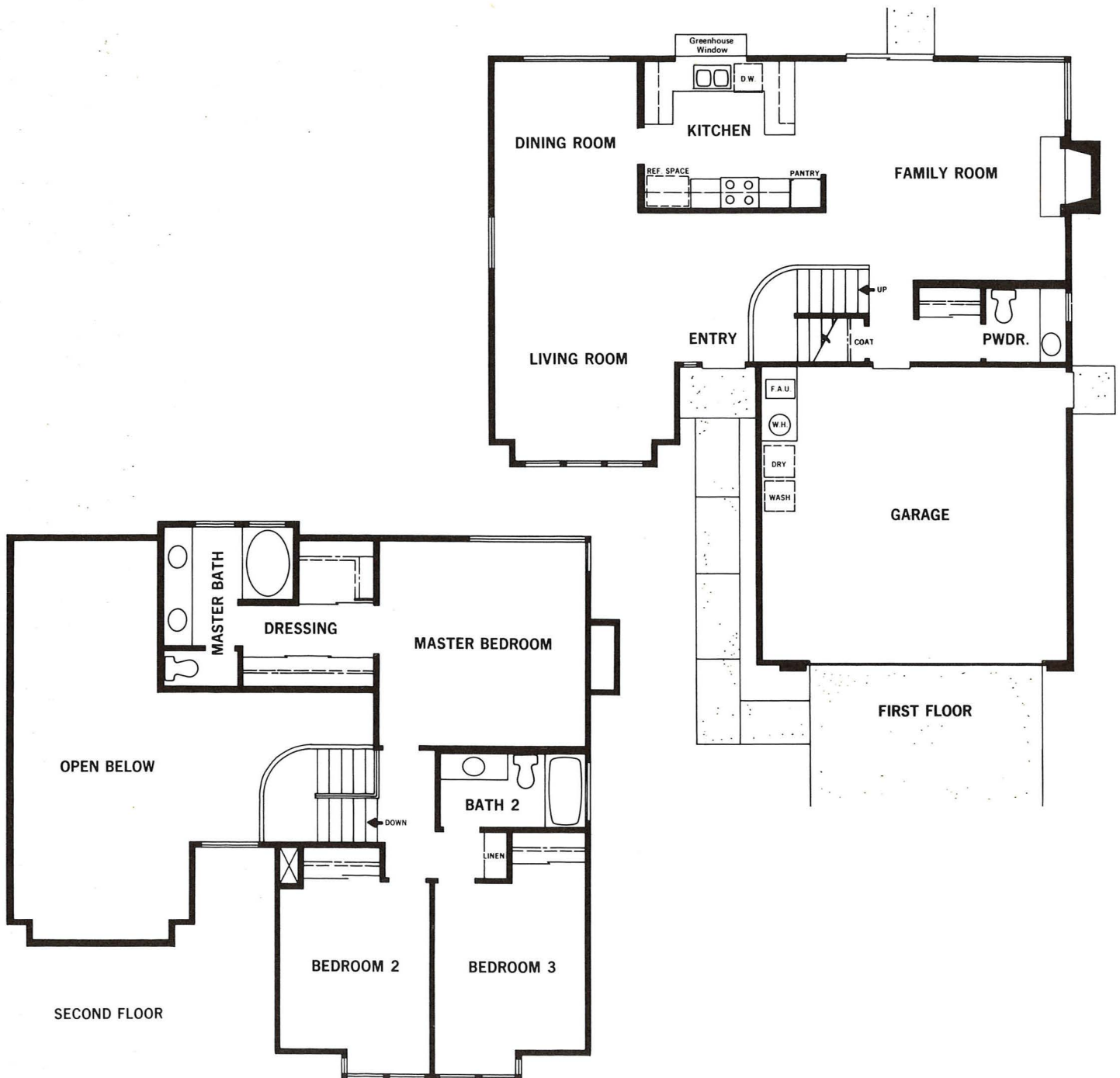


2CR

# Plan 3

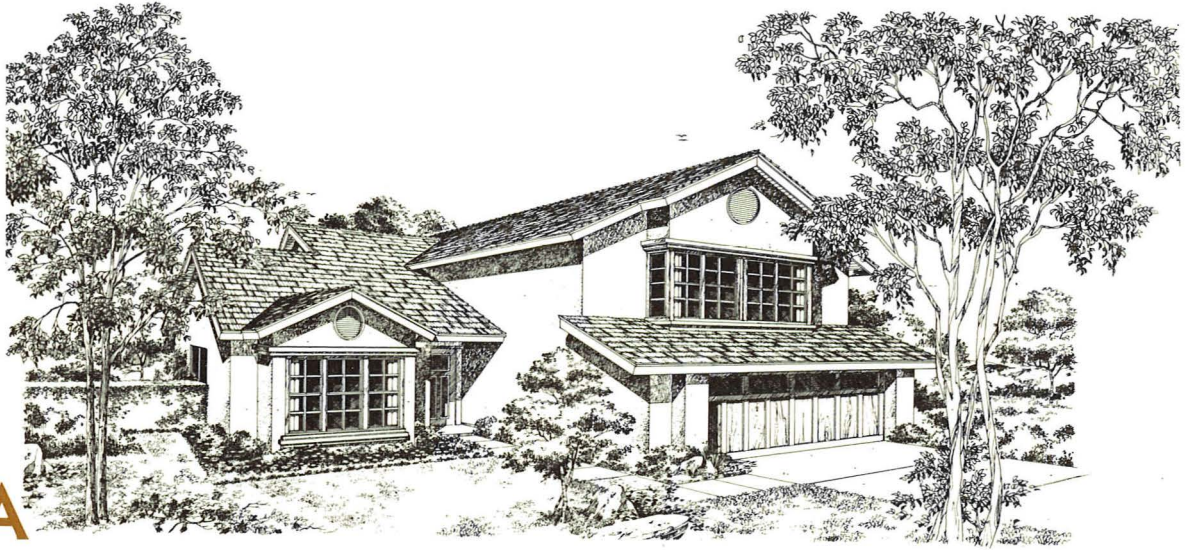
High vaulted ceilings and a dramatic formal entry accent the spacious living room of this three-bedroom, 1,740 square foot home. Your family will find the downstairs living area, with its large family room (complete with gas log-lit fireplace) and modern kitchen, the center of activity. Plan 3 is designed for pleasant indoor-outdoor living with

lots of windows, including a greenhouse window in the kitchen and sliding glass door opening to the back yard off the family room. A graceful stairway leads you to the second floor bedrooms where a luxurious master bedroom suite, two secondary bedrooms and two full bathrooms await you.

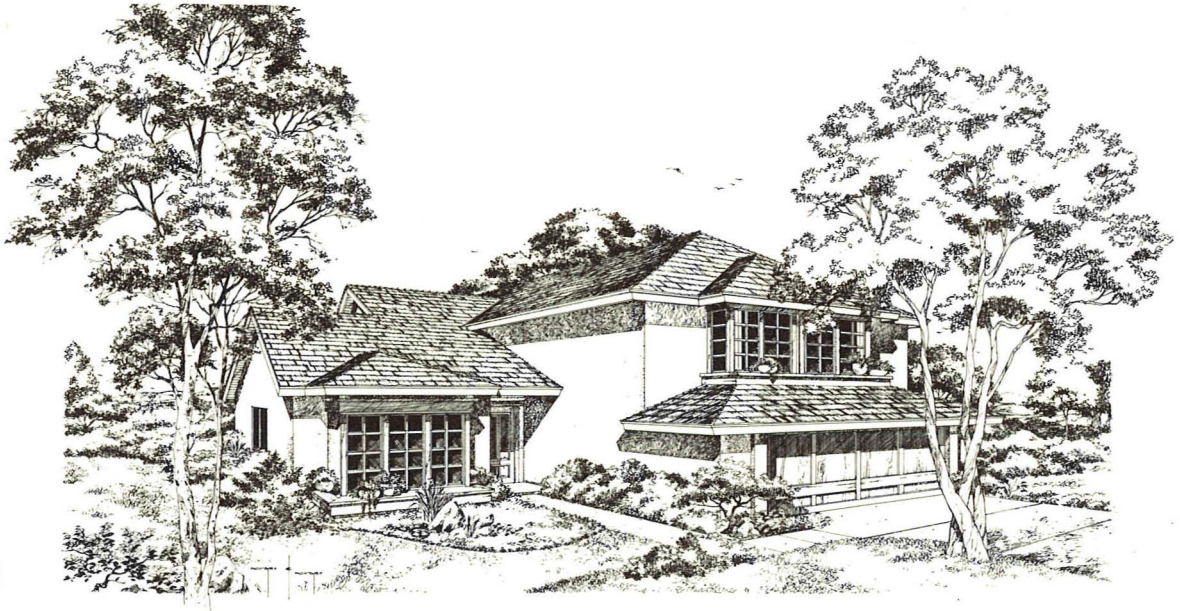




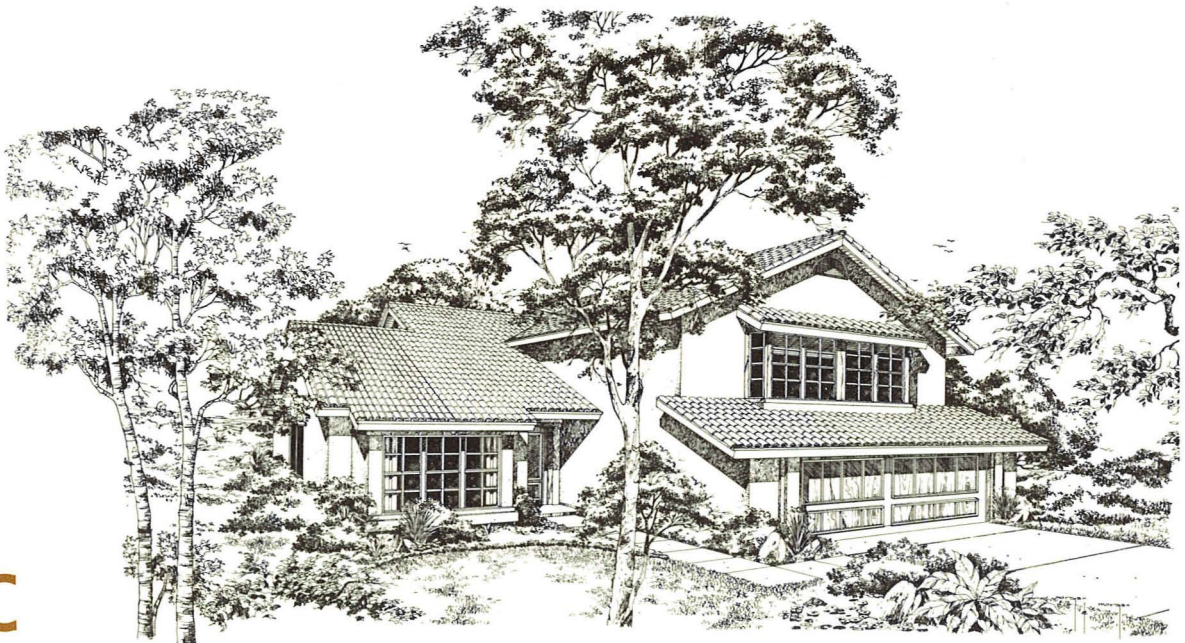
3A



3B



3C

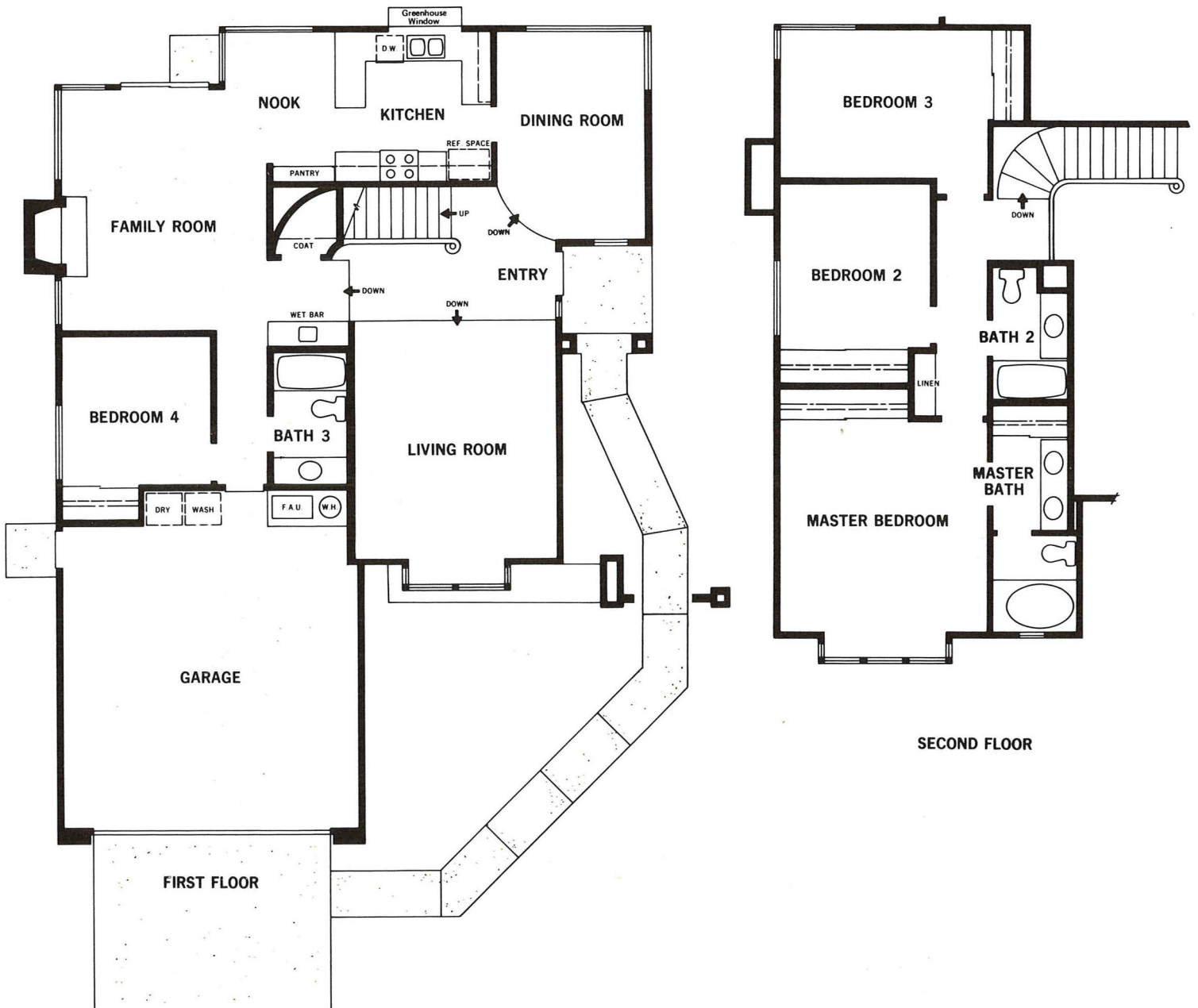


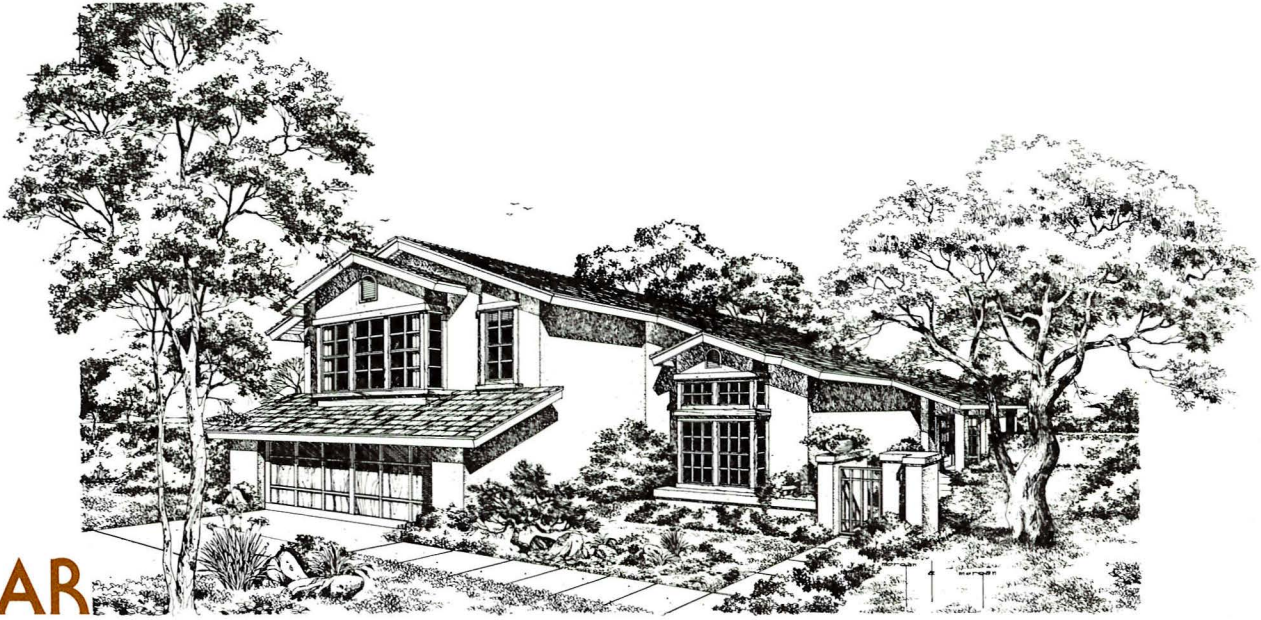
# Plan 4R

Contemporary styling and some very special extra features make Plan 4 an exciting choice for your next home. A raised entry leads you into either the formal dining room, spacious living room (with dramatic vaulted ceilings) or entertainment-oriented family room. Here you'll find a built-in wet bar, brick-faced fireplace and

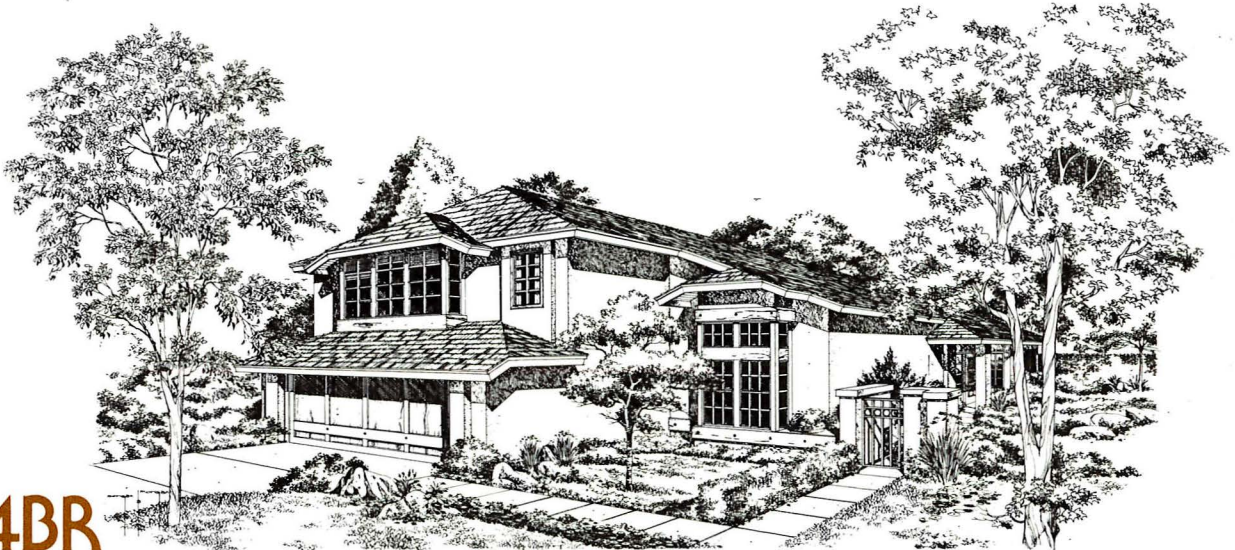
versatile breakfast nook—just steps from the kitchen. The kitchen is designed for convenience, with a built-in dishwasher and self-cleaning oven. Downstairs also boasts a bedroom and full bath.

A king-size master bedroom suite and two secondary bedrooms upstairs complete the 1,940 square foot floor plan.

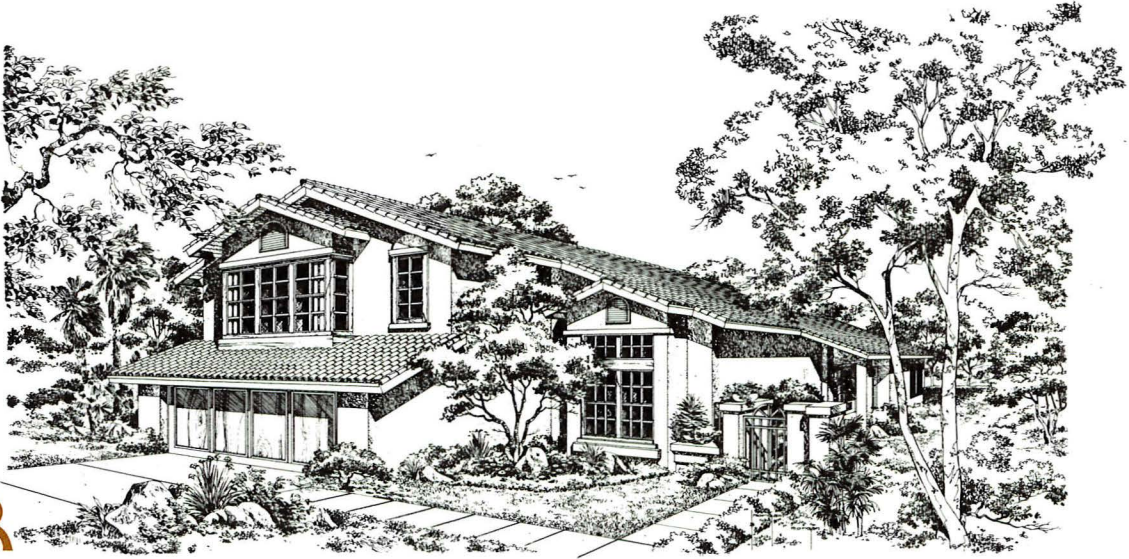




4AR



4BR



4CR

# Southern California is alive and well at Mission Del Monte.

Plan 1



Plan 2



Plan 3



Plan 4

