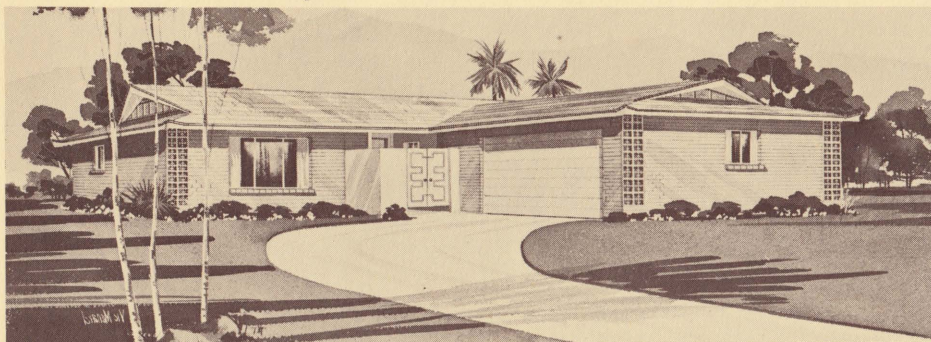


PRESENTING

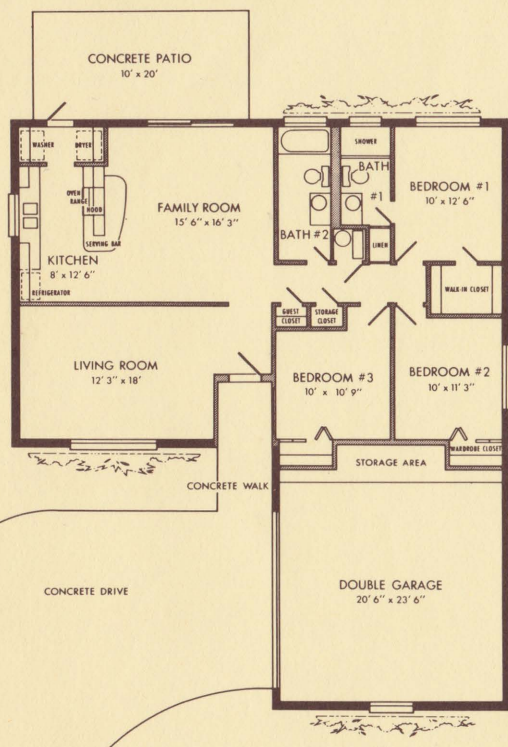
# The Sophisticate

PLAN 331 OF ARIZONA'S FAVORITE HOMES BY HALLCRAFT (Available with Basement)



**1,908 SQUARE FEET WITH GARAGE**

**1,404 SQUARE FEET LIVING AREA**



HALLCRAFT GOLD MEDALLION TOTAL ELECTRIC HOMES OPTIONAL

**THESE AND MANY MORE CUSTOM FEATURES  
INCLUDED AT NO EXTRA COST**

**THREE BEDROOMS  
TWO BATHS  
FAMILY ROOM  
ALL ELECTRIC KITCHEN**

**WESTINGHOUSE BUILT-IN RANGE, 24 INCH OVEN**

**WESTINGHOUSE GARBAGE DISPOSER**

**RECESSED FLUORESCENT LIGHTING IN KITCHEN**

**VINYL ASBESTOS TILE:**  
(Kitchen, Family Room, Baths)  
(Matico Tile Floors balance of home)

**EXTERIOR WALLS FURRED OUT AND FOIL BACKED**

**FIREPROOF FIBERGLAS INSULATION THROUGHOUT**

**TWO SPEED ARCTIC CIRCLE COOLER**

**LARGE DOUBLE GARAGE**

**LOTS SEEDED AND SHRUBBED**

STAINLESS STEEL RANGE HOOD WITH EXHAUST FAN AND LIGHT  
CUSTOM FINISH NATURAL ASH CABINETS, MAGNETIC CATCHES  
BUILT-IN BREAKFAST BAR  
SEPARATE UTILITY ROOM WITH CABINET STORAGE  
EIGHT FOOT GLASS SLIDING DOOR FROM FAMILY ROOM TO  
10 X 20 FOOT PATIO  
ONE-PIECE FIBERGLAS SPLASH IN SHOWER AND ABOVE TUB  
SILENT LIGHT SWITCHES THROUGHOUT  
GLASS LINED WATER HEATER  
COPPER PLUMBING THROUGHOUT  
TRUSS ROOF CONSTRUCTION  
FIBERGLAS ROOF WITH 17 YEAR GUARANTEE  
SEE THESE AND MORE GOOD LIVING FEATURES TODAY!

*Park Scottsdale*

■ GRANITE REEF RD. A BLOCK N. OF McDONALD DR.  
SCOTTSDALE, ARIZONA

SALES OFFICE PHONE 945-9577

*West Plaza*

■ WEST BETHANY HOME ROAD AT 47TH AVENUE  
GLENDALE, ARIZONA

SALES OFFICE PHONE 264-5855

*Tempe Gardens*

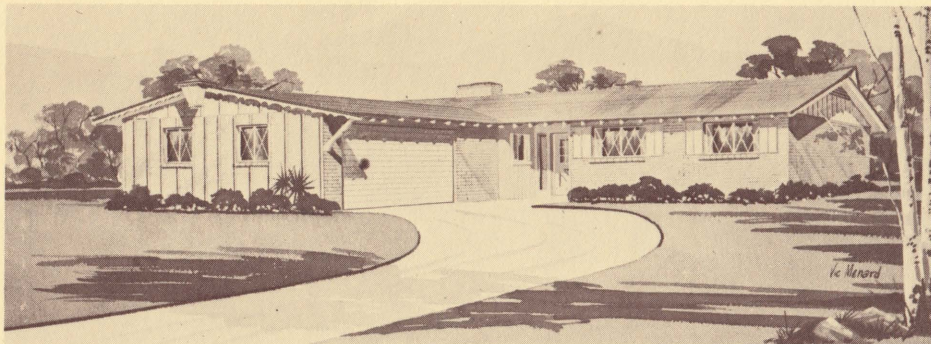
■ MILL AVENUE A BLOCK BELOW SOUTHERN AVENUE  
TEMPE, ARIZONA

SALES OFFICE PHONE 967-7874

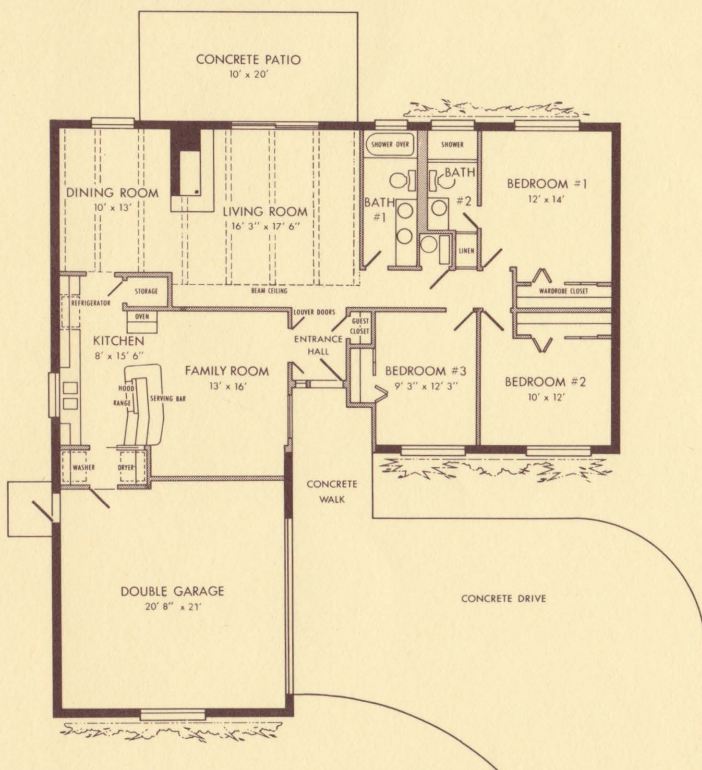
PRESENTING

# The Continental

PLAN 32A OF ARIZONA'S FAVORITE HOMES BY HALLCRAFT (Available with Basement)



**2,088 SQUARE FEET WITH GARAGE**  
**1,626 SQUARE FEET LIVING AREA**



HALLCRAFT GOLD MEDALLION TOTAL ELECTRIC HOMES OPTIONAL

**THESE AND MANY MORE CUSTOM FEATURES  
 INCLUDED AT NO EXTRA COST**

**THREE BEDROOMS TWO BATHS FAMILY ROOM**  
**ALL ELECTRIC KITCHEN**  
**FORMAL DINING ROOM**

**WESTINGHOUSE BUILT-IN RANGE, 24 INCH OVEN**  
**WESTINGHOUSE BUILT-IN AUTOMATIC DISHWASHER**

**WESTINGHOUSE GARBAGE DISPOSER**

**RECESSED FLUORESCENT LIGHTING IN KITCHEN**

**WOOD BURNING FIREPLACE**

*(In Contemporary, Traditional, or Colonial Design)*

**VINYL ASBESTOS TILE:**

*(Kitchen, Family Room, Baths, Utility Room)*  
*(Matico Tile Floors balance of home)*

**EXTERIOR WALLS FURRED OUT AND FOIL BACKED**  
**FIREPROOF FIBERGLAS INSULATION THROUGHOUT**

**TWO SPEED ARCTIC CIRCLE COOLER**

**LARGE DOUBLE GARAGE**

**LOTS SEEDED AND SHRUBBED**

STAINLESS STEEL RANGE HOOD WITH EXHAUST FAN AND LIGHT  
 CUSTOM FINISH NATURAL ASH CABINETS, MAGNETIC CATCHES  
 BUILT-IN CURVED BREAKFAST BAR  
 SEPARATE UTILITY ROOM WITH CABINET STORAGE  
 BEAMED CEILINGS IN LIVING ROOM AND DINING ROOM  
 EIGHT FOOT GLASS SLIDING DOOR FROM LIVING ROOM  
 TO 10 X 20 FOOT PATIO  
 ONE-PIECE FIBERGLAS SPLASH IN SHOWER AND ABOVE TUB  
 MIRRORED WARDROBE DOORS IN MASTER BEDROOM  
 SILENT LIGHT SWITCHES THROUGHOUT  
 GLASS LINED WATER HEATER  
 COPPER PLUMBING THROUGHOUT  
 TRUSS ROOF CONSTRUCTION  
 FIBERGLAS ROOF WITH 17 YEAR GUARANTEE  
 SEE THESE AND MORE GOOD LIVING FEATURES TODAY!

*Park Scottsdale*

■ GRANITE REEF RD. A BLOCK N. OF McDONALD DR.  
SCOTTSDALE, ARIZONA

SALES OFFICE PHONE 945-9577

*West Plaza*

■ WEST BETHANY HOME ROAD AT 47TH AVENUE  
GLENDALE, ARIZONA

SALES OFFICE PHONE 264-5855

*Tempe Gardens*

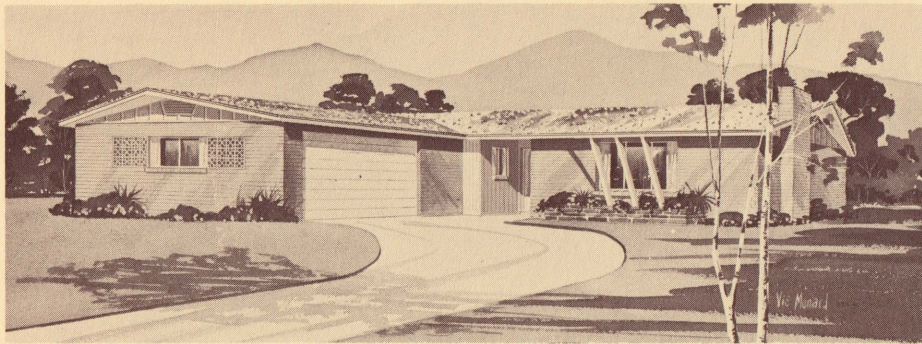
■ MILL AVENUE A BLOCK BELOW SOUTHERN AVENUE  
TEMPE, ARIZONA

SALES OFFICE PHONE 967-7874

PRESENTING

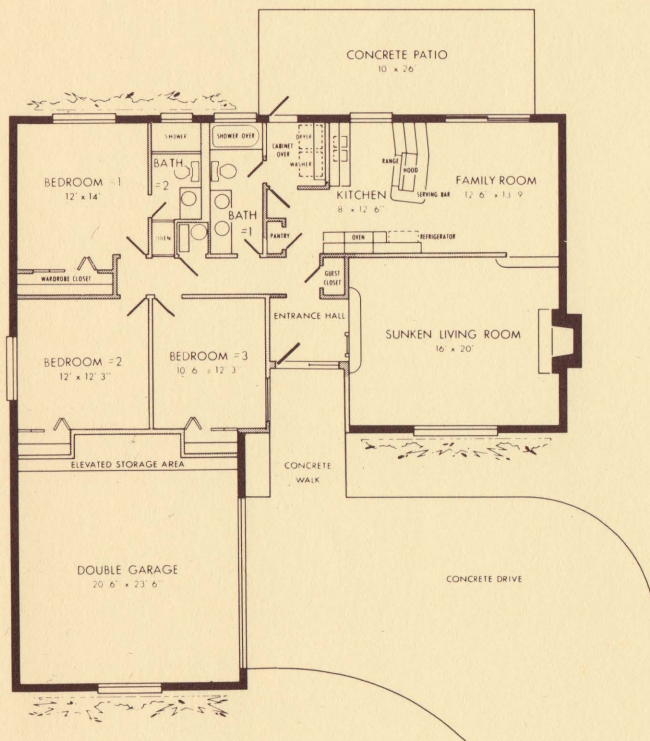
# The Flair

PLAN 33C OF ARIZONA'S FAVORITE HOMES BY HALLCRAFT (Available with Basement)



**2,088 SQUARE FEET WITH GARAGE**

**1,584 SQUARE FEET LIVING AREA**



THESE AND MANY MORE CUSTOM FEATURES  
INCLUDED AT NO EXTRA COST

**THREE BEDROOMS TWO BATHS FAMILY ROOM**  
**ALL ELECTRIC KITCHEN**  
**WESTINGHOUSE BUILT-IN RANGE, 24 INCH OVEN**  
**WESTINGHOUSE BUILT-IN AUTOMATIC DISHWASHER**  
**WESTINGHOUSE GARBAGE DISPOSER**  
**RECESSED FLUORESCENT LIGHTING IN KITCHEN**  
**STEP-DOWN LIVING ROOM**

**WOOD BURNING FIREPLACE**

*(In Contemporary, Traditional, or Colonial Design)*

**VINYL ASBESTOS TILE:**

*(Kitchen, Family Room, Baths, Utility Room)*  
*(Matico Tile Floors balance of home)*

**EXTERIOR WALLS FURRED OUT AND FOIL BACKED**  
**FIREPROOF FIBERGLAS INSULATION THROUGHOUT**

**TWO SPEED ARCTIC CIRCLE COOLER**

**LARGE DOUBLE GARAGE**

**LOTS SEEDED AND SHRUBBED**

STAINLESS STEEL RANGE HOOD WITH EXHAUST FAN AND LIGHT  
 CUSTOM FINISH NATURAL ASH CABINETS, MAGNETIC CATCHES  
 BUILT-IN CURVED BREAKFAST BAR  
 SEPARATE UTILITY ROOM WITH CABINET STORAGE  
 EIGHT FOOT GLASS SLIDING DOOR FROM FAMILY ROOM  
 TO 10 X 26 FOOT PATIO  
 DECORATOR STYLED SHADED PATIO  
 BARBECUE AND ELECTRIC ROTISSERIE  
 ONE-PIECE FIBERGLAS SPLASH IN SHOWER AND ABOVE TUB  
 MIRRORED WARDROBE DOORS IN MASTER BEDROOM  
 SILENT LIGHT SWITCHES THROUGHOUT  
 GLASS LINED WATER HEATER  
 COPPER PLUMBING THROUGHOUT  
 TRUSS ROOF CONSTRUCTION  
 FIBERGLAS ROOF WITH 17 YEAR GUARANTEE

*Park Scottsdale*

■ GRANITE REEF RD. A BLOCK N. OF McDONALD DR.  
SCOTTSDALE, ARIZONA

SALES OFFICE PHONE 945-9577

*West Plaza*

■ WEST BETHANY HOME ROAD AT 47TH AVENUE  
GLENDALE, ARIZONA

SALES OFFICE PHONE 264-5855

*Tempe Gardens*

■ MILL AVENUE A BLOCK BELOW SOUTHERN AVENUE  
TEMPE, ARIZONA

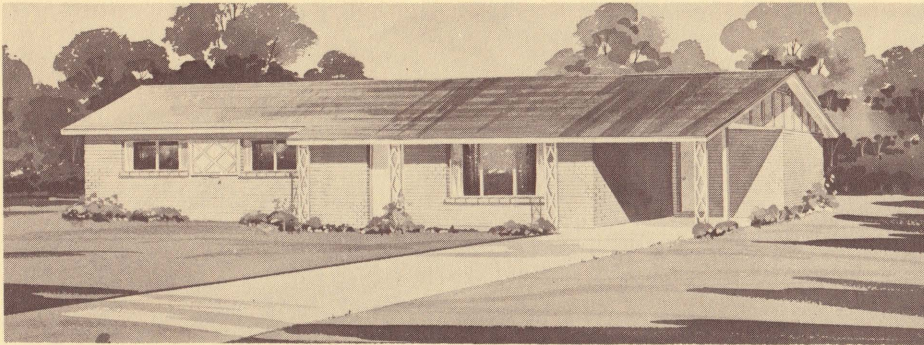
SALES OFFICE PHONE 967-7874

**HALLCRAFT GOLD MEDALLION TOTAL ELECTRIC HOMES OPTIONAL**

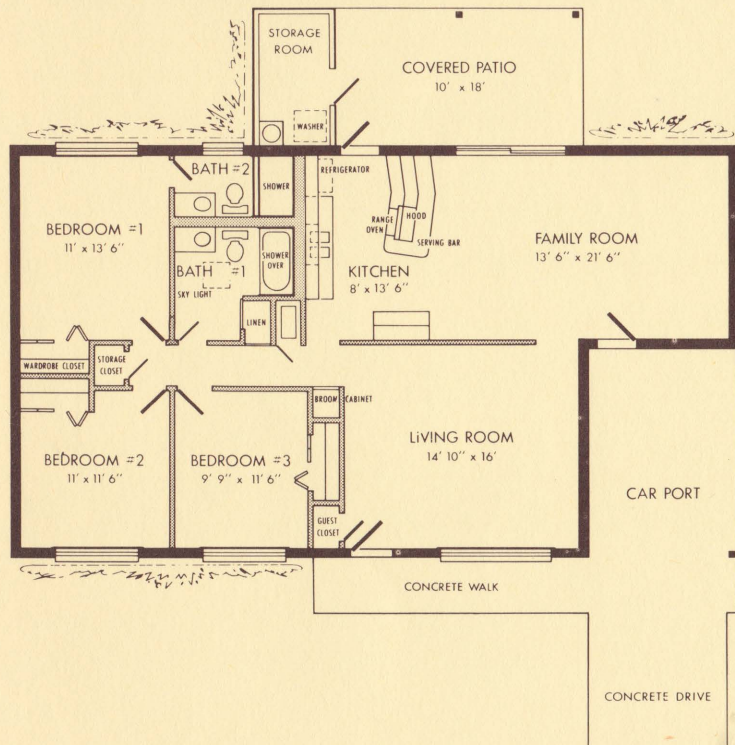
PRESENTING

# The Encore

PLAN 34B OF ARIZONA'S FAVORITE HOMES BY HALLCRAFT (Available with Basement)



**1,912 SQUARE FEET UNDER ROOF**  
**1,384 SQUARE FEET LIVING AREA**



**THESE AND MANY MORE CUSTOM FEATURES  
 INCLUDED AT NO EXTRA COST**

**THREE BEDROOMS**  
**TWO BATHS**  
**FAMILY ROOM**  
**ALL ELECTRIC KITCHEN**

**WESTINGHOUSE BUILT-IN RANGE, 24 INCH OVEN**

**WESTINGHOUSE GARBAGE DISPOSER**

**VINYL ASBESTOS TILE:**  
*(Kitchen, Family Room, Baths)*  
*(Matico Tile Floors balance of home)*

**EXTERIOR WALLS FURRED OUT AND FOIL BACKED**

**FIREPROOF FIBERGLAS INSULATION THROUGHOUT**

**TWO SPEED ARCTIC CIRCLE COOLER**

**LOTS SEEDED AND SHRUBBED**

STAINLESS STEEL RANGE HOOD WITH EXHAUST FAN AND LIGHT  
 CUSTOM FINISH NATURAL ASH CABINETS, MAGNETIC CATCHES  
 BUILT-IN CURVED BREAKFAST BAR  
 SEPARATE UTILITY AND STORAGE ROOM  
 EIGHT FOOT GLASS SLIDING DOOR FROM FAMILY ROOM  
 TO COVERED 10 X 18 FOOT PATIO  
 ONE-PIECE FIBERGLAS SPLASH IN SHOWER AND ABOVE TUB  
 SILENT LIGHT SWITCHES THROUGHOUT  
 GLASS LINED WATER HEATER  
 COPPER PLUMBING THROUGHOUT  
 TRUSS ROOF CONSTRUCTION  
 SEE THESE AND MORE GOOD LIVING FEATURES TODAY!

*Park Scottsdale*

■ GRANITE REEF RD. A BLOCK N. OF McDONALD DR.  
 SCOTTSDALE, ARIZONA

SALES OFFICE PHONE 945-9577

*West Plaza*

■ WEST BETHANY HOME ROAD AT 47TH AVENUE  
 GLENDALE, ARIZONA

SALES OFFICE PHONE 264-5855

*Tempe Gardens*

■ MILL AVENUE A BLOCK BELOW SOUTHERN AVENUE  
 TEMPE, ARIZONA

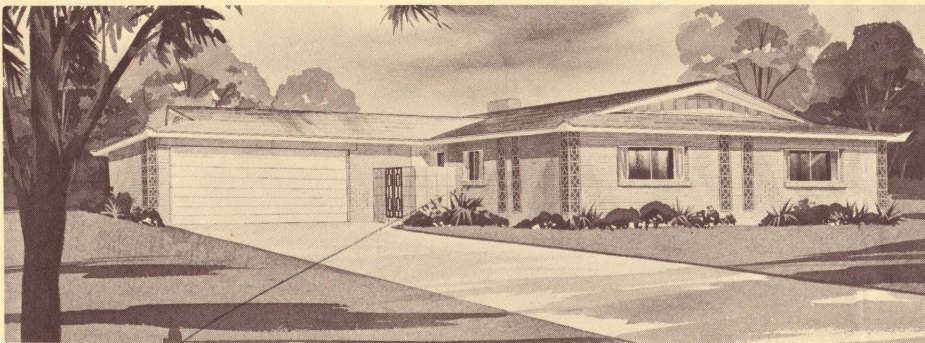
SALES OFFICE PHONE 967-7874

**HALLCRAFT GOLD MEDALLION TOTAL ELECTRIC HOMES OPTIONAL**

PRESENTING

# The Crestwood

PLAN 42B OF ARIZONA'S FAVORITE HOMES BY HALLCRAFT (Available with Basement)



745 Down 8549 E. Klein

THESE AND MANY MORE CUSTOM FEATURES INCLUDED AT NO EXTRA COST

**FOUR BEDROOMS TWO BATHS FAMILY ROOM  
ALL ELECTRIC KITCHEN  
WESTINGHOUSE BUILT-IN RANGE, 24 INCH OVEN  
WESTINGHOUSE BUILT-IN AUTOMATIC DISHWASHER**

#42

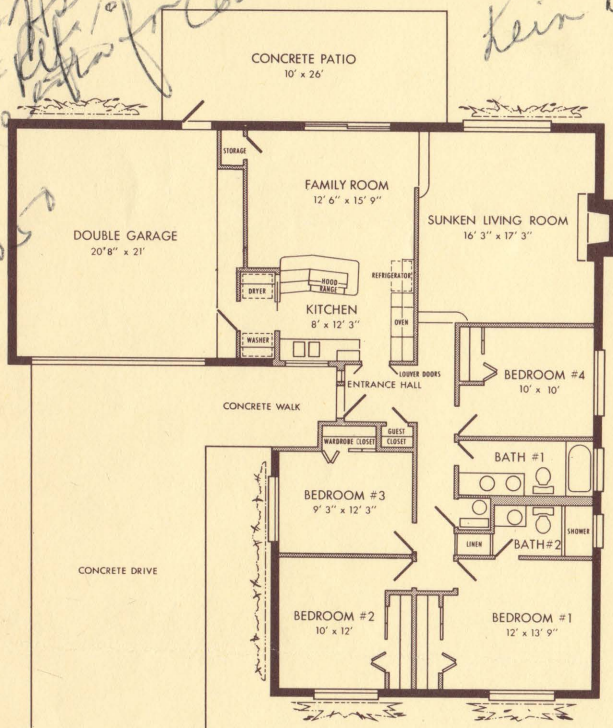
2,088 SQUARE FEET WITH GARAGE  
1,607 SQUARE FEET LIVING AREA

220  
with  
4/0  
17,000

Kein Dr

15,950  
550  
129

next to corner



475 ash  
420 patio  
1000 Rev.  
1895  
15950  
17845  
West Plaza

**EXTERIOR WALLS FURRED OUT AND FOIL BACKED  
FIREPROOF FIBERGLAS INSULATION THROUGHOUT  
TWO SPEED ARCTIC CIRCLE COOLER  
LARGE DOUBLE GARAGE  
LOTS SEEDED AND SHRUBBED**

STAINLESS STEEL RANGE HOOD WITH EXHAUST FAN AND LIGHT  
CUSTOM FINISH NATURAL ASH CABINETS, MAGNETIC CATCHES  
BUILT-IN CURVED BREAKFAST BAR  
SEPARATE UTILITY ROOM WITH CABINET STORAGE  
EIGHT FOOT GLASS SLIDING DOOR FROM FAMILY ROOM  
TO 10 X 26 FOOT PATIO  
ONE-PIECE FIBERGLAS SPLASH IN SHOWER AND ABOVE TUB  
MIRRORED WARDROBE DOORS IN MASTER BEDROOM  
SILENT LIGHT SWITCHES THROUGHOUT  
GLASS LINED WATER HEATER  
COPPER PLUMBING THROUGHOUT  
TRUSS ROOF CONSTRUCTION  
FIBERGLAS ROOF WITH 17 YEAR GUARANTEE

150 - 142

HALLCRAFT GOLD MEDALLION TOTAL ELECTRIC HOMES OPTIONAL

Park Scottsdale

GRANITE REEF RD. A BLOCK N. OF McDONALD DR.  
SCOTTSDALE, ARIZONA

SALES OFFICE PHONE 945-9577

WEST BETHANY HOME ROAD AT 47TH AVENUE  
GLENDALE, ARIZONA

SALES OFFICE PHONE 264-5855

Tempe Gardens

MILL AVENUE A BLOCK BELOW SOUTHERN AVENUE  
TEMPE, ARIZONA

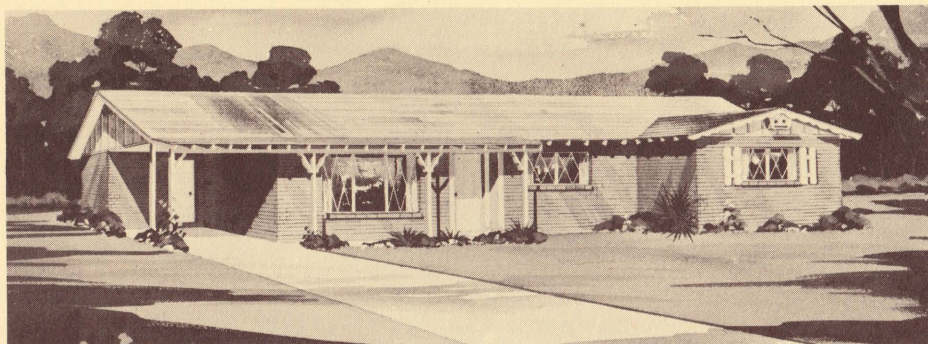
SALES OFFICE PHONE 967-7874

BEAUTIFULLY FURNISHED, AIR CONDITIONED MODEL HOMES OPEN DAILY FROM 10 AM TO 9 PM

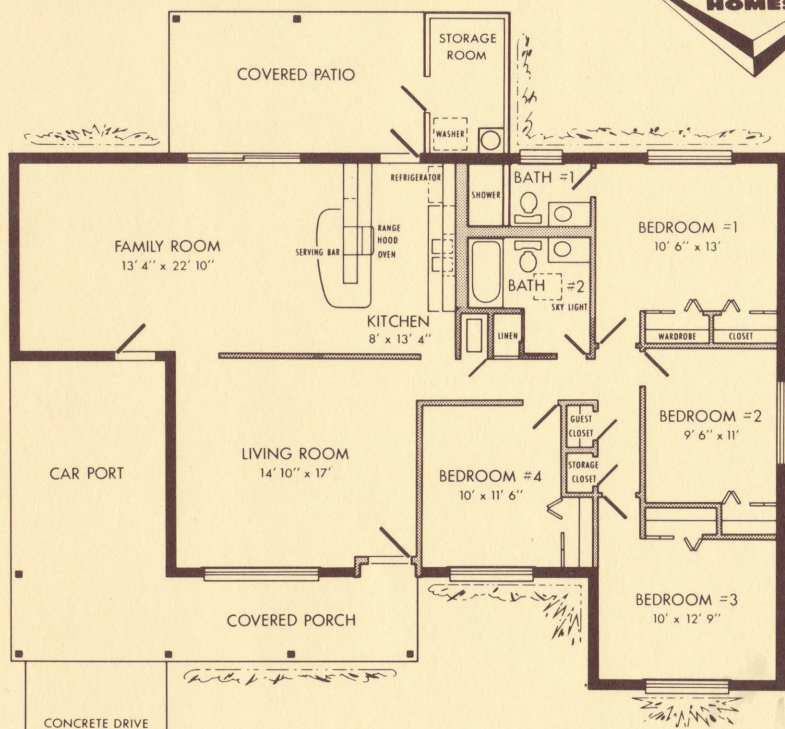
PRESENTING

# The Sheffield

PLAN 344 OF ARIZONA'S FAVORITE HOMES BY HALLCRAFT (Available with Basement)



2,187 SQUARE FEET UNDER ROOF  
1,593 SQUARE FEET LIVING AREA



THESE AND MANY MORE CUSTOM FEATURES  
INCLUDED AT NO EXTRA COST

**FOUR BEDROOMS**

**TWO BATHS**

**FAMILY ROOM**

**ALL ELECTRIC KITCHEN**

**WESTINGHOUSE BUILT-IN RANGE, 24 INCH OVEN**

**WESTINGHOUSE GARBAGE DISPOSER**

**VINYL ASBESTOS TILE:**

*(Kitchen, Family Room, Baths)*

*(Matico Tile Floors balance of home)*

**EXTERIOR WALLS FURRED OUT AND FOIL BACKED**

**FIREPROOF FIBERGLAS INSULATION THROUGHOUT**

**TWO SPEED ARCTIC CIRCLE COOLER**

**LOTS SEEDED AND SHRUBBED**

STAINLESS STEEL RANGE HOOD WITH EXHAUST FAN AND LIGHT  
CUSTOM FINISH NATURAL ASH CABINETS, MAGNETIC CATCHES  
BUILT-IN CURVED BREAKFAST BAR  
SEPARATE UTILITY AND STORAGE ROOM  
EIGHT FOOT GLASS SLIDING DOOR FROM FAMILY ROOM TO  
10 X 18 FOOT COVERED PATIO  
ONE-PIECE FIBERGLAS SPLASH IN SHOWER AND ABOVE TUB  
OWNER'S MASTER BEDROOM WITH PRIVATE BATH  
TWO WARDROBE CLOSETS IN MASTER BEDROOM  
SILENT LIGHT SWITCHES THROUGHOUT  
GLASS LINED WATER HEATER  
COPPER PLUMBING THROUGHOUT  
TRUSS ROOF CONSTRUCTION  
FIBERGLAS ROOF WITH 17 YEAR GUARANTEE  
SEE THESE AND MORE GOOD LIVING FEATURES!

*Park Scottsdale*

■ GRANITE REEF RD. A BLOCK N. OF McDONALD DR.  
SCOTTSDALE, ARIZONA

SALES OFFICE PHONE 945-9577

*West Plaza*

■ WEST BETHANY HOME ROAD AT 47TH AVENUE  
GLENDALE, ARIZONA

SALES OFFICE PHONE 264-5855

*Tempe Gardens*

■ MILL AVENUE A BLOCK BELOW SOUTHERN AVENUE  
TEMPE, ARIZONA

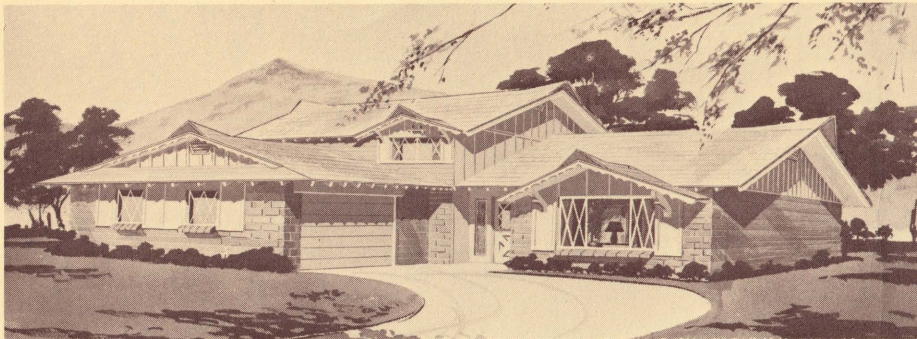
SALES OFFICE PHONE 967-7874

HALLCRAFT GOLD MEDALLION TOTAL ELECTRIC HOMES' OPTIONAL

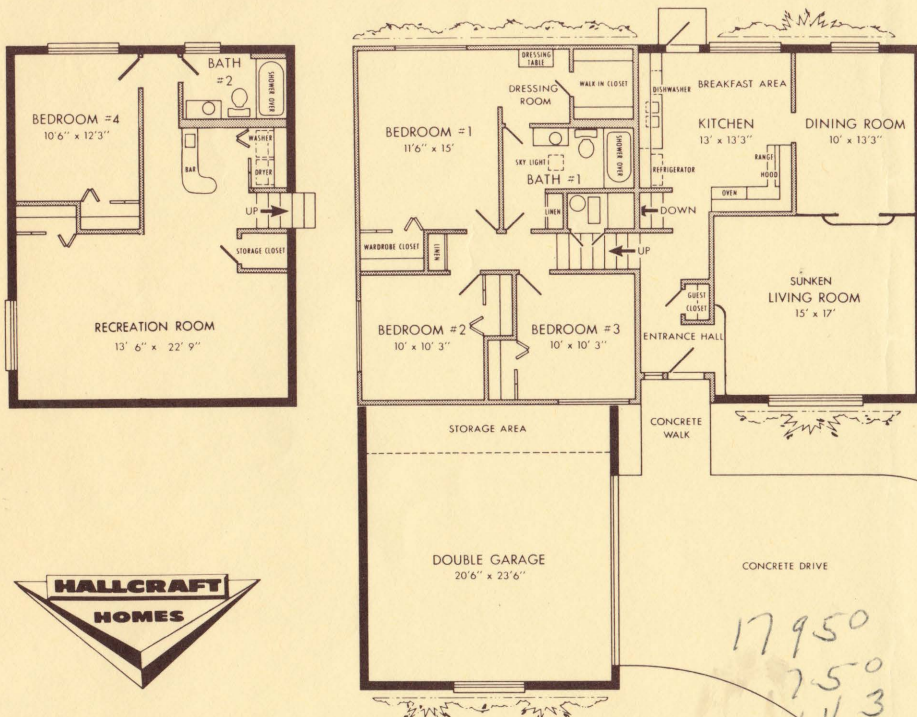
PRESENTING

# The Penthouse

PLAN 45A OF ARIZONA'S FAVORITE HOMES BY HALLCRAFT



**2,688 SQUARE FEET WITH GARAGE**  
**2,160 SQUARE FEET LIVING AREA**



**THESE AND MANY MORE CUSTOM FEATURES  
 INCLUDED AT NO EXTRA COST**

**THREE EXCITING LEVELS**  
**FOUR BEDROOMS TWO BATHS RECREATION ROOM**  
**BUILT-IN HOSPITALITY BAR COMPLETE WITH SINK**  
**STEP-DOWN LIVING ROOM**  
**FORMAL DINING ROOM**  
**ALL ELECTRIC KITCHEN**

**WESTINGHOUSE BUILT-IN RANGE, 24 INCH OVEN**  
**WESTINGHOUSE BUILT-IN AUTOMATIC DISHWASHER**  
**WESTINGHOUSE GARBAGE DISPOSER**

**VINYL ASBESTOS TILE:**  
*(Kitchen, Family Room, Baths, Utility Room)*  
*(Matico Tile Floors balance of home)*

**EXTERIOR WALLS FURRED OUT AND FOIL BACKED**  
**FIREPROOF FIBERGLAS INSULATION THROUGHOUT**

**TWO SPEED ARCTIC CIRCLE COOLER**

**LARGE DOUBLE GARAGE**

**LOTS SEEDED AND SHRUBBED**

STAINLESS STEEL RANGE HOOD WITH EXHAUST FAN AND LIGHT  
 CUSTOM FINISH NATURAL ASH CABINETS, MAGNETIC CATCHES  
 SEPARATE UTILITY AREA WITH CABINET STORAGE  
 HOSPITALITY BAR COMPLETE WITH SINK  
 MASTER BEDROOM SUITE WITH PRIVATE DRESSING ROOM  
 LIGHTED WALK-IN CLOSET OFF MASTER BEDROOM  
 TWO FULL BATHS WITH SHOWER OVER TUBS  
 ONE-PIECE FIBERGLAS SPLASH ABOVE TUBS  
 SILENT LIGHT SWITCHES THROUGHOUT  
 GLASS LINED WATER HEATER  
 COPPER PLUMBING THROUGHOUT  
 TRUSS ROOF CONSTRUCTION  
 FIBERGLAS ROOF WITH 17 YEAR GUARANTEE

*Park Scottsdale*

■ GRANITE REEF RD. A BLOCK N. OF McDONALD DR.  
 SCOTTSDALE, ARIZONA

SALES OFFICE PHONE 945-9577

*West Plaza*

■ WEST BETHANY HOME ROAD AT 47TH AVENUE  
 GLENDALE, ARIZONA

SALES OFFICE PHONE 264-5855

*Tempe Gardens*

■ MLL AVENUE A BLOCK BELOW SOUTHERN AVENUE  
 TEMPE, ARIZONA

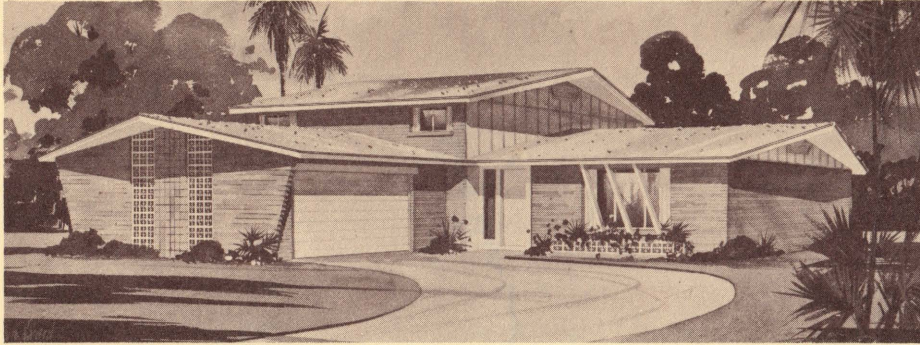
SALES OFFICE PHONE 967-7874

**HALLCRAFT GOLD MEDALLION TOTAL ELECTRIC HOMES OPTIONAL**

PRESENTING

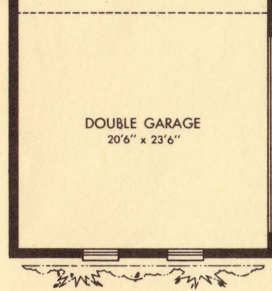
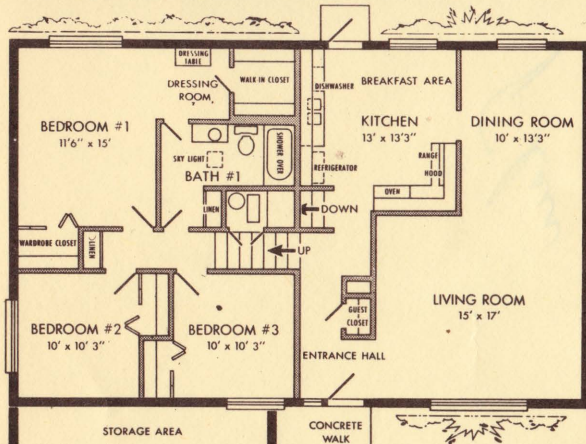
# The Skyliner

PLAN 45K OF ARIZONA'S FAVORITE HOMES BY HALLCRAFT



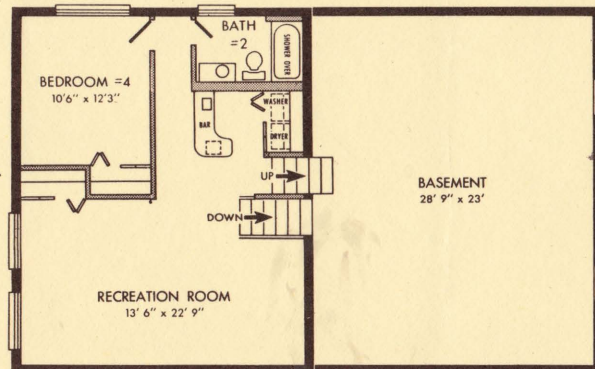
THESE AND MANY MORE CUSTOM FEATURES INCLUDED AT NO EXTRA COST

- FOUR EXCITING LEVELS**
- FOUR BEDROOMS TWO BATHS RECREATION ROOM**
- BUILT-IN HOSPITALITY BAR COMPLETE WITH SINK**
- FORMAL DINING ROOM**
- ALL ELECTRIC KITCHEN**
- WESTINGHOUSE BUILT-IN RANGE, 24 INCH OVEN**
- WESTINGHOUSE BUILT-IN AUTOMATIC DISHWASHER**
- WESTINGHOUSE GARBAGE DISPOSER**
- VINYL ASBESTOS TILE:**  
(Kitchen, Family Room, Baths, Utility Room)  
(Matico Tile Floors balance of upper three levels)
- EXTERIOR WALLS FURRED OUT AND FOIL BACKED**
- FIREPROOF FIBERGLAS INSULATION THROUGHOUT**
- TWO SPEED ARCTIC CIRCLE COOLER**
- LARGE DOUBLE GARAGE**
- LOTS SEEDED AND SHRUBBED**



CONCRETE WALK

CONCRETE DRIVE



**3,408 SQUARE FEET WITH GARAGE**  
**2,880 SQUARE FEET LIVING AREA**

STAINLESS STEEL RANGE HOOD WITH EXHAUST FAN AND LIGHT  
 CUSTOM FINISH NATURAL ASH CABINETS, MAGNETIC CATCHES  
 SEPARATE UTILITY AREA WITH CABINET STORAGE  
 MASTER BEDROOM SUITE WITH PRIVATE DRESSING ROOM  
 LIGHTED WALK-IN CLOSET OFF MASTER BEDROOM  
 TWO FULL BATHS WITH SHOWER OVER TUBS  
 ONE-PIECE FIBERGLAS SPLASH ABOVE TUBS  
 SILENT LIGHT SWITCHES THROUGHOUT  
 GLASS LINED WATER HEATER  
 COPPER PLUMBING THROUGHOUT  
 TRUSS ROOF CONSTRUCTION  
 FIBERGLAS ROOF WITH 17 YEAR GUARANTEE

*Park Scottsdale*

■ GRANITE REEF RD. A BLOCK N. OF McDONALD DR.  
SCOTTSDALE, ARIZONA

SALES OFFICE PHONE 945-9577

*West Plaza*

■ WEST BETHANY HOME ROAD AT 47TH AVENUE  
GLENDALE, ARIZONA

SALES OFFICE PHONE 264-5855

*Tempe Gardens*

■ MILL AVENUE A BLOCK BELOW SOUTHERN AVENUE  
TEMPE, ARIZONA

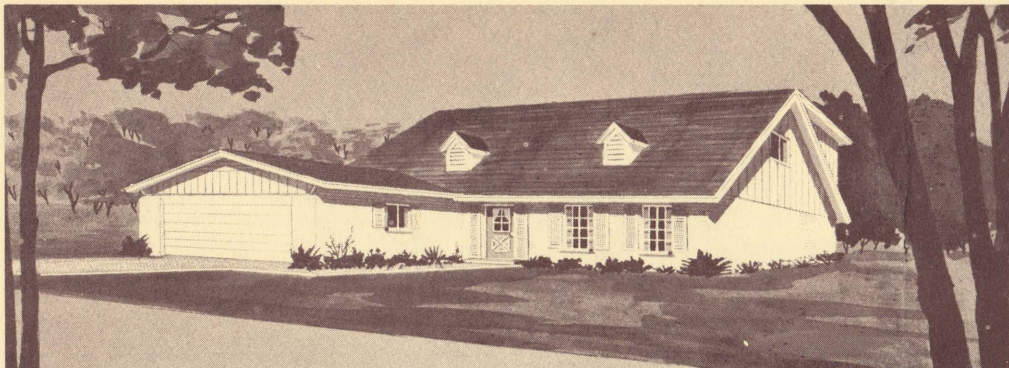
SALES OFFICE PHONE 967-7874

HALLCRAFT GOLD MEDALLION TOTAL ELECTRIC HOMES OPTIONAL



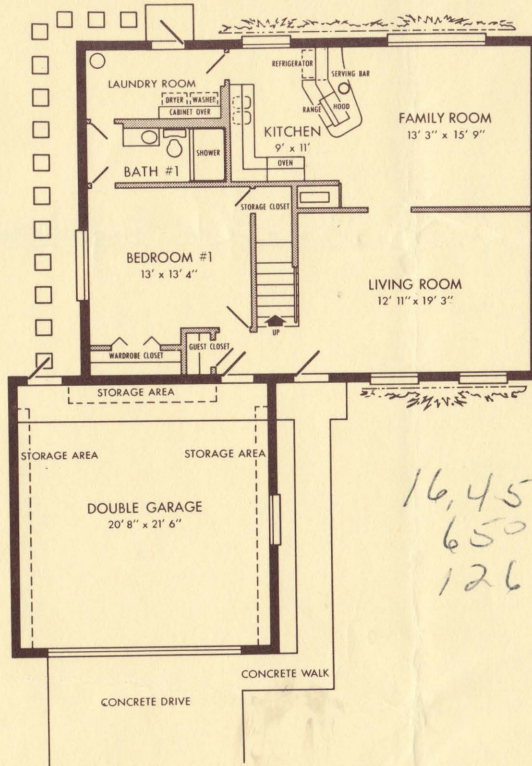
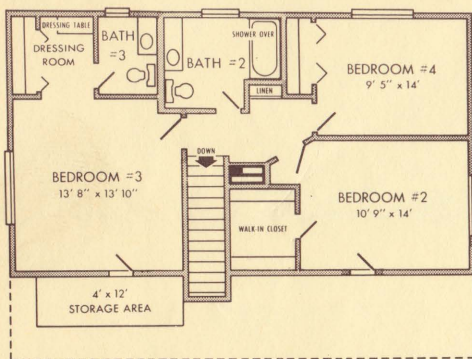
# "New Englander"

PLAN 48 OF ARIZONA'S FAVORITE HOMES BY HALLCRAFT (Available with or without Full Basement)



2,352 SQUARE FEET WITH GARAGE

1,868 SQUARE FEET LIVING AREA



16,450  
650  
126

#48

- THESE AND MANY MORE CUSTOM FEATURES INCLUDED AT NO EXTRA COST
- Handwritten notes:*  
14' 6" (next to 'TWO EXCITING LEVELS')  
86 sq. ft. (next to 'FOUR BEDROOMS')  
also Sage Drive (next to 'TWO AND ONE HALF BATHS')
- TWO EXCITING LEVELS
  - FOUR BEDROOMS
  - TWO AND ONE HALF BATHS
  - ALL ELECTRIC KITCHEN
  - WESTINGHOUSE BUILT-IN RANGE, 24 INCH OVEN
  - WESTINGHOUSE GARBAGE DISPOSER

VINYL ASBESTOS TILE:  
(Kitchen, Family Room, Baths, Utility Room)  
(Matico Tile Floors balance of home)

- EXTERIOR WALLS FURRED OUT AND FOIL BACKED
- FIREPROOF FIBERGLAS INSULATION THROUGHOUT
- TWO SPEED ARCTIC CIRCLE COOLER
- LARGE DOUBLE GARAGE
- LOTS SEEDED AND SHRUBBED

- STAINLESS STEEL RANGE HOOD WITH EXHAUST FAN AND LIGHT
- RECESSED FLUORESCENT CEILING LIGHTING IN KITCHEN
- CUSTOM FINISH NATURAL ASH CABINETS, MAGNETIC CATCHES
- BUILT-IN CURVED BREAKFAST BAR
- SEPARATE UTILITY ROOM WITH CABINET STORAGE
- ONE-PIECE FIBERGLAS SPLASH IN SHOWER AND ABOVE TUB
- SILENT LIGHT SWITCHES THROUGHOUT
- GLASS LINED WATER HEATER
- COPPER PLUMBING THROUGHOUT
- TRUSS ROOF CONSTRUCTION
- FIBERGLAS ROOF WITH 17 YEAR GUARANTEE
- SEE THESE AND MORE GOOD LIVING FEATURES TODAY!



HALLCRAFT GOLD MEDALLION TOTAL ELECTRIC HOMES OPTIONAL

*Park Scottsdale*

*West Plaza*

*Tempe Gardens*

■ GRANITE REEF RD. A BLOCK N. OF McDONALD DR.  
SCOTTSDALE, ARIZONA

■ WEST BETHANY HOME ROAD AT 47TH AVENUE  
GLENDALE, ARIZONA

■ MILL AVENUE A BLOCK BELOW SOUTHERN AVENUE  
TEMPE, ARIZONA

SALES OFFICE PHONE 945-9577

SALES OFFICE PHONE 264-5855

SALES OFFICE PHONE 967-7874