


---

**PLAN 3**

3 Bedroom — 2 Bath

**\$36,990**

Prepaid Items \$340 additional

---

**PLAN 4**

4 Bedroom — 2 Bath

**\$38,190**

Prepaid Items \$360 additional

---

**PLAN 5**

4 Bedroom — 2 Bath (two story)

**\$40,290**

Prepaid Items \$370 additional

---

**PLAN 6**

4 Bedroom — 2 Bath

**\$42,490**

Prepaid Items \$390 additional

---

**PLAN 7**

4 Bedroom — 3 Bath (two story)

**\$46,290**

Prepaid Items \$430 additional

---

**PLAN 11**

3 Bedroom — 2 Bath

**\$40,890**

Prepaid Items \$370 additional

---

Since Ponderosa Homes is constantly improving its product, all prices, materials and plans are subject to change without notice.  
 Ponderosa North Phone Numbers: (802) 842-7520

**PONDEROSA  
 HOMES**  
 division of KAUFER



Effective Date March 19, 1976



● **FRAME CONSTRUCTION = UP TO  
42% SAVINGS ON ENERGY COMPARED TO  
BLOCK CONSTRUCTION**

## Outstanding Features Of The Complete Home

- Refrigerated air conditioning
- Completely enclosed double car garage offering extra security
- Inspiring, fresh architectural designs
- Full insulation for utmost comfort - sidewalls and ceilings
- Cool, clean electric range, oven
- Disposal
- Work saving dishwasher
- Luxurious, carefree shag carpeting throughout
- 220 line to dryer and vent
- Landscaping
- Clean, efficient electric heat
- Large laundry, service and storage rooms
- Concrete patio (covered patio 5 plan)
- Decorator selected tile in kitchen, family room and baths
- Custom quality decorator lighting fixtures
- Large sliding, safety glass patio doors
- Spacious kitchens with country-size views
- Cultured marble vanity tops
- Complete six-foot rear yard fencing
- Shower door enclosure
- Pool size lot

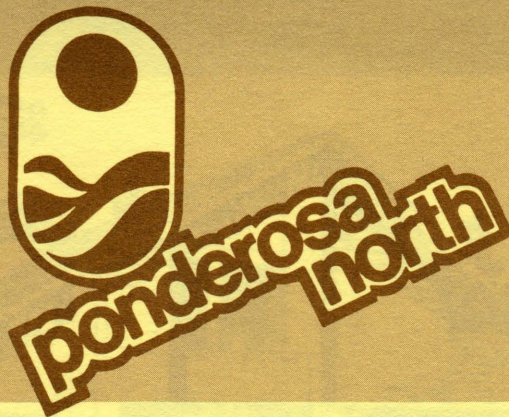
Ponderosa Homes builds a complete home that's ready for gracious living the day you move in.

We build a quality home with painstaking care in stylings that actually complement nature, PONDEROSA NORTH represents painstaking care in buiding for environmental living and the culmination of years in architectural refinement.

The "options" you'll find in other homes are standard features (see exclusive features) at PONDEROSA NORTH. The custom features, fireplace and shake roof, are offered at the lowest possible cost for added enjoyment of your home. Your Ponderosa representative has details.



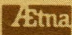




PLAN 7  
CORTEZ

ELEVATIONS ON REVERSE SIDE

# PONDEROSA HOMES

▪ A member of the Aetna Realty Group 

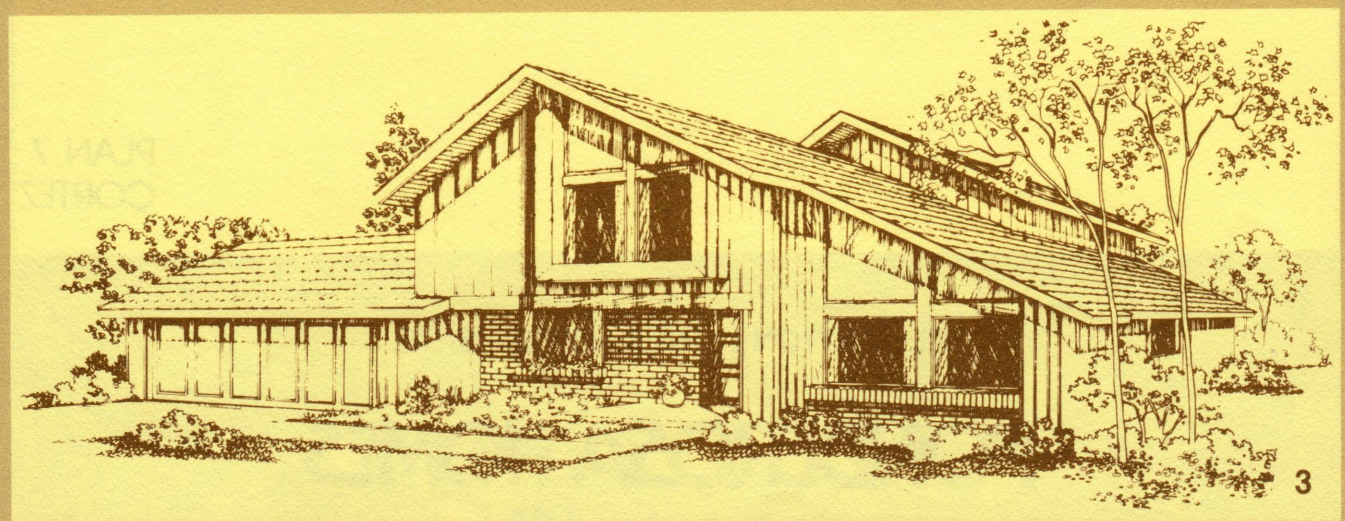
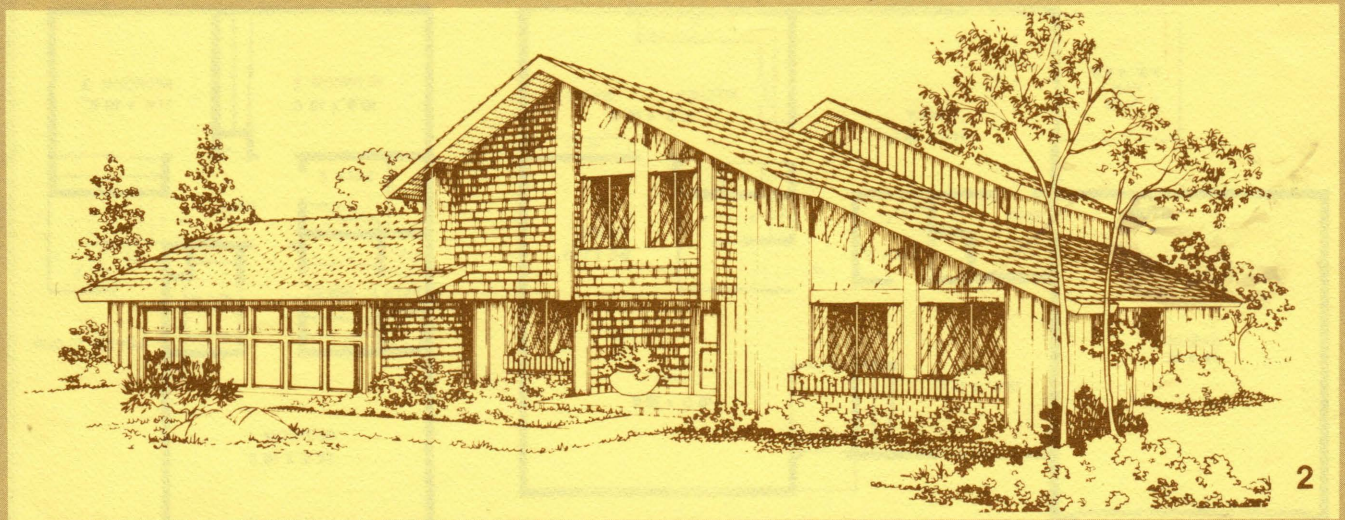
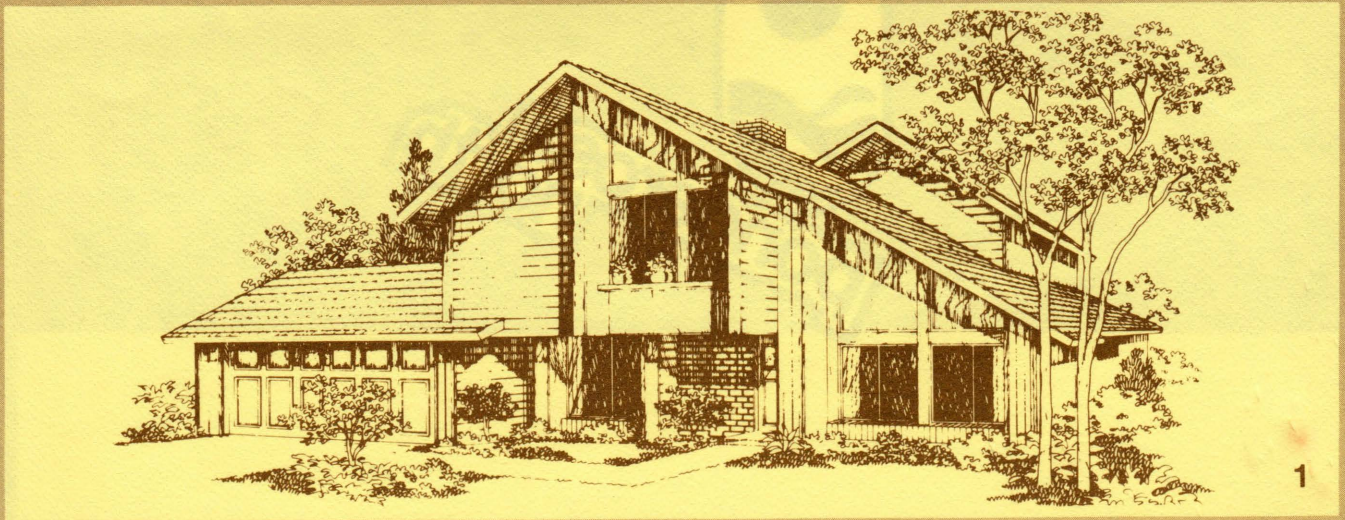
ALL ROOM MEASUREMENTS ARE APPROXIMATE

EFFECTIVE DATE: March 14, 1977 • All prices, materials and plans are subject to change without notice





FLOOR PLANS ON REVERSE SIDE



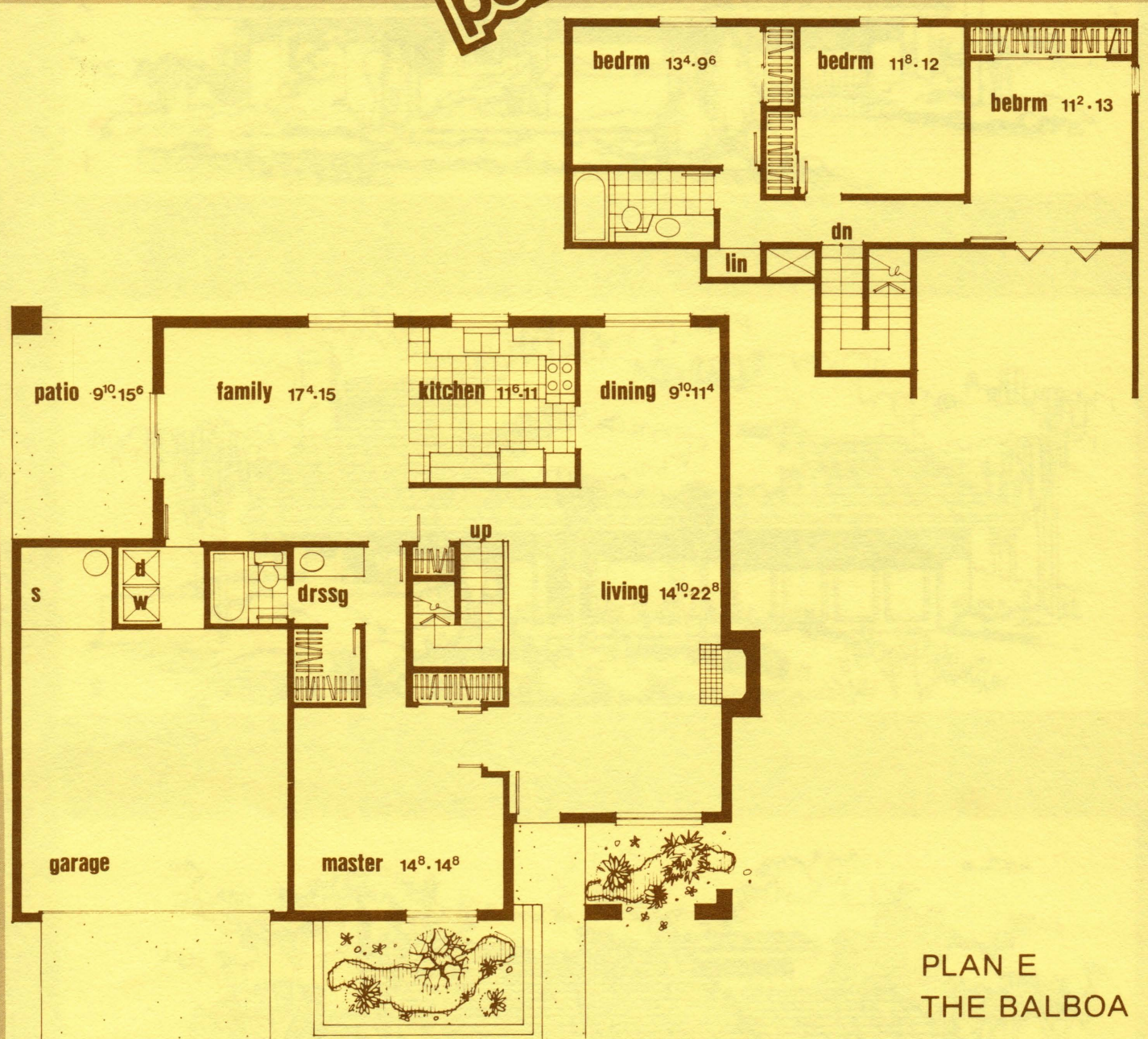
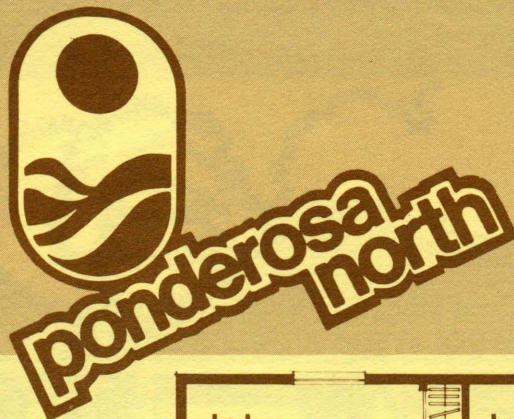
ELEVATIONS VARY IN COST

**PONDEROSA HOMES**



EFFECTIVE DATE: March 14, 1977 • All prices, materials and plans are subject to change without notice • A member of the Aetna Realty Group

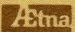




PLAN E  
THE BALBOA

ELEVATIONS ON REVERSE SIDE

# PONDEROSA HOMES

▪ A member of the Aetna Realty Group 

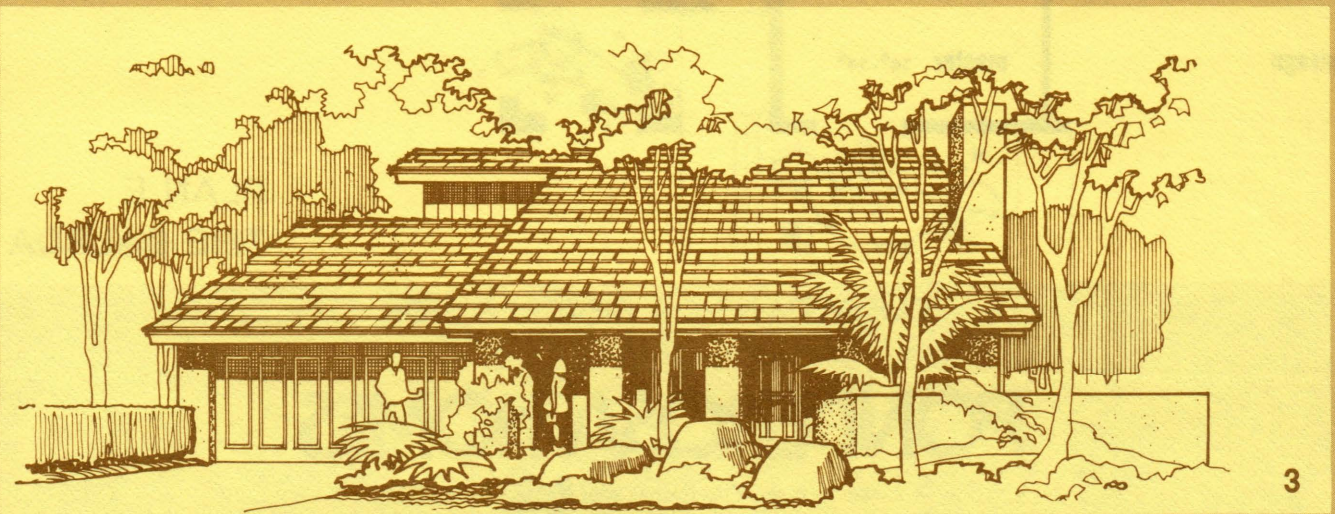
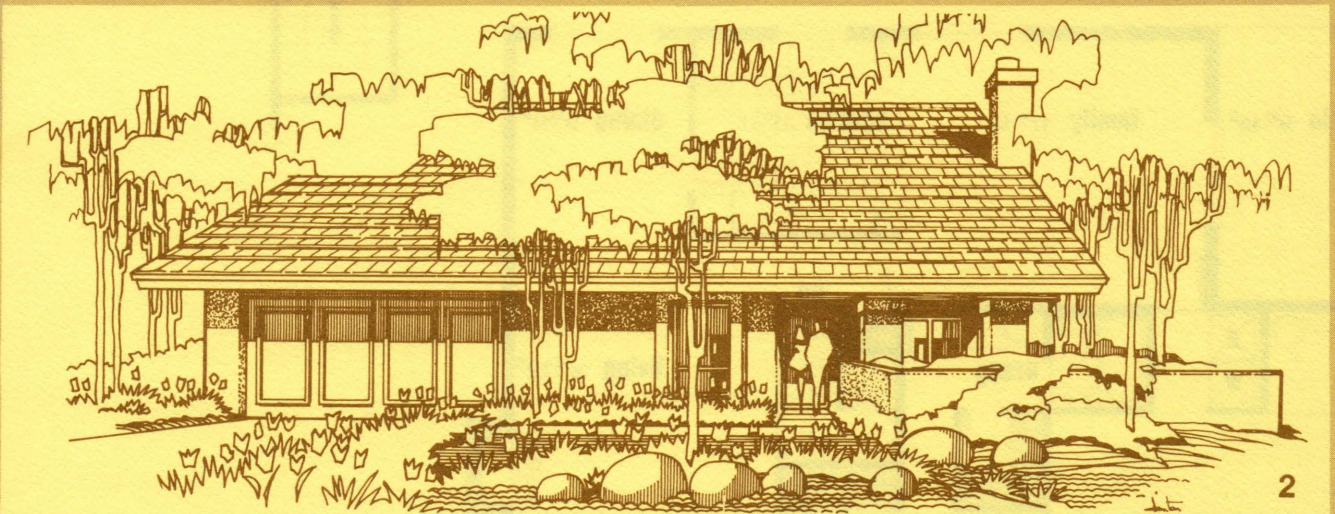
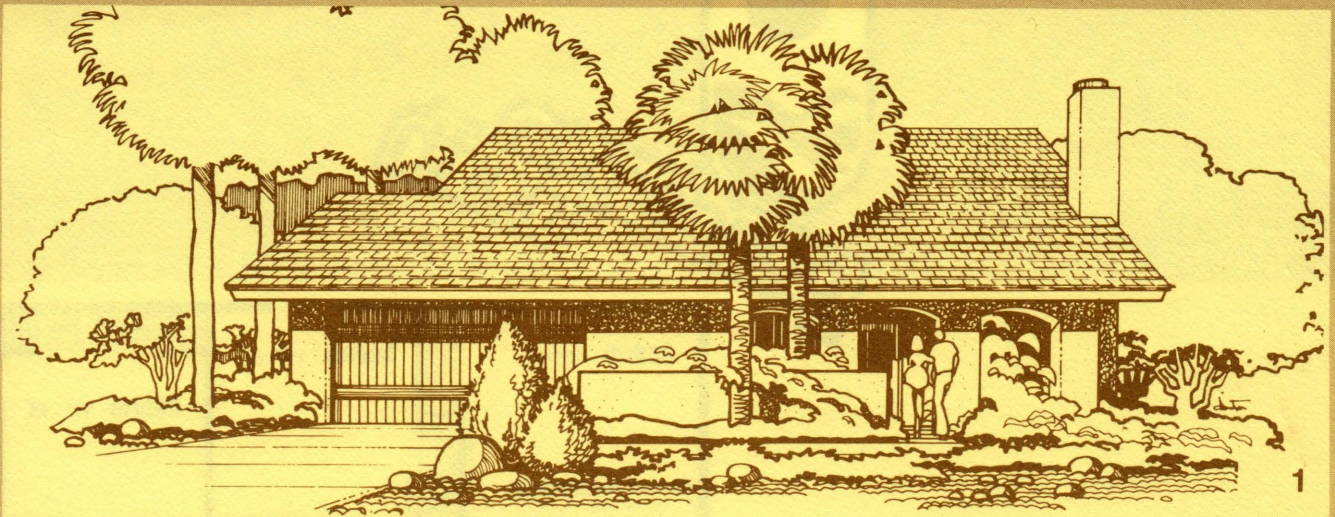
ALL ROOM MEASUREMENTS ARE APPROXIMATE

EFFECTIVE DATE: March 14, 1977 • All prices, materials and plans are subject to change without notice





FLOOR PLANS ON REVERSE SIDE



ELEVATIONS VARY IN COST

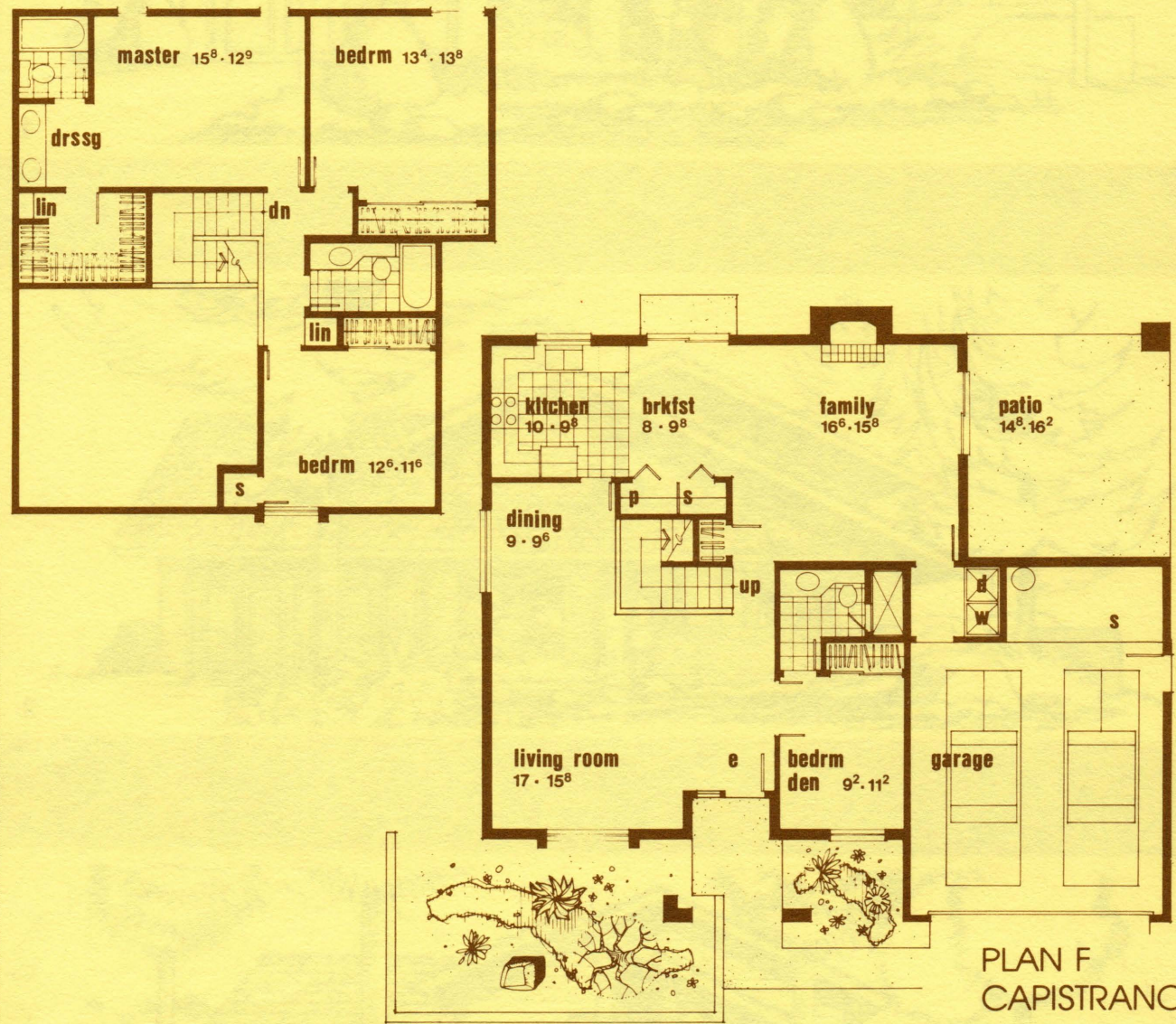
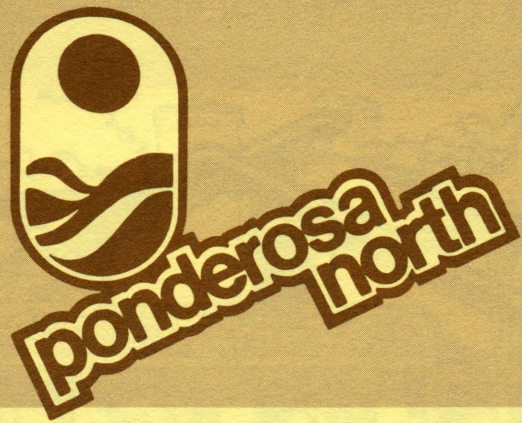
**PONDEROSA HOMES**



EFFECTIVE DATE: March 14, 1977 • All prices, materials and plans are subject to change without notice

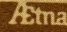
▪ A member of the Aetna Realty Group





ELEVATIONS ON REVERSE SIDE

# PONDEROSA HOMES

▪ A member of the Etna Realty Group 

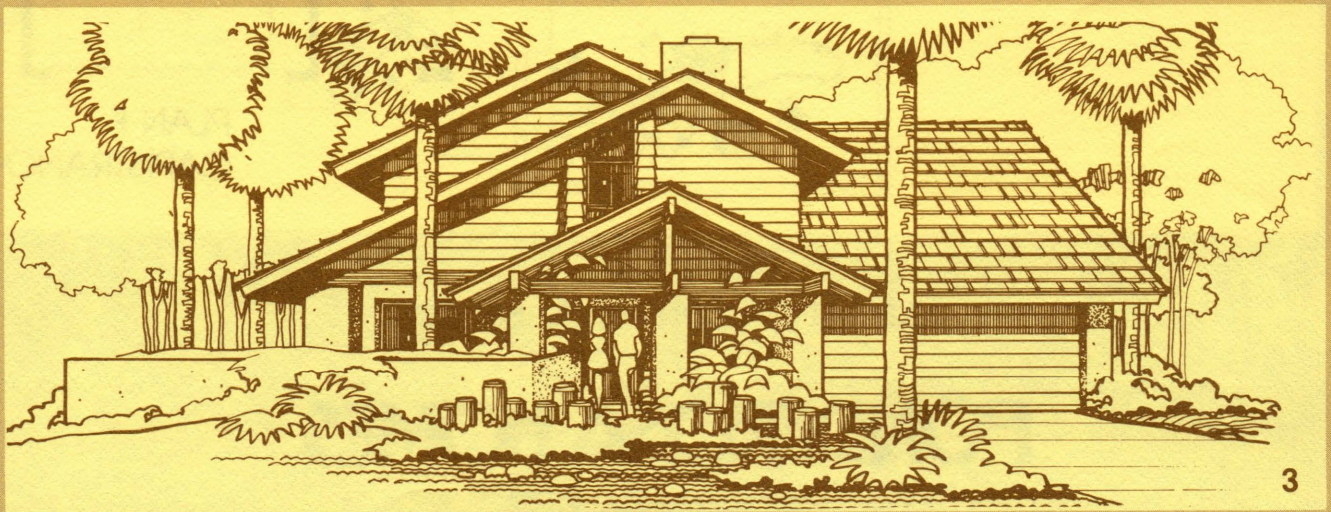
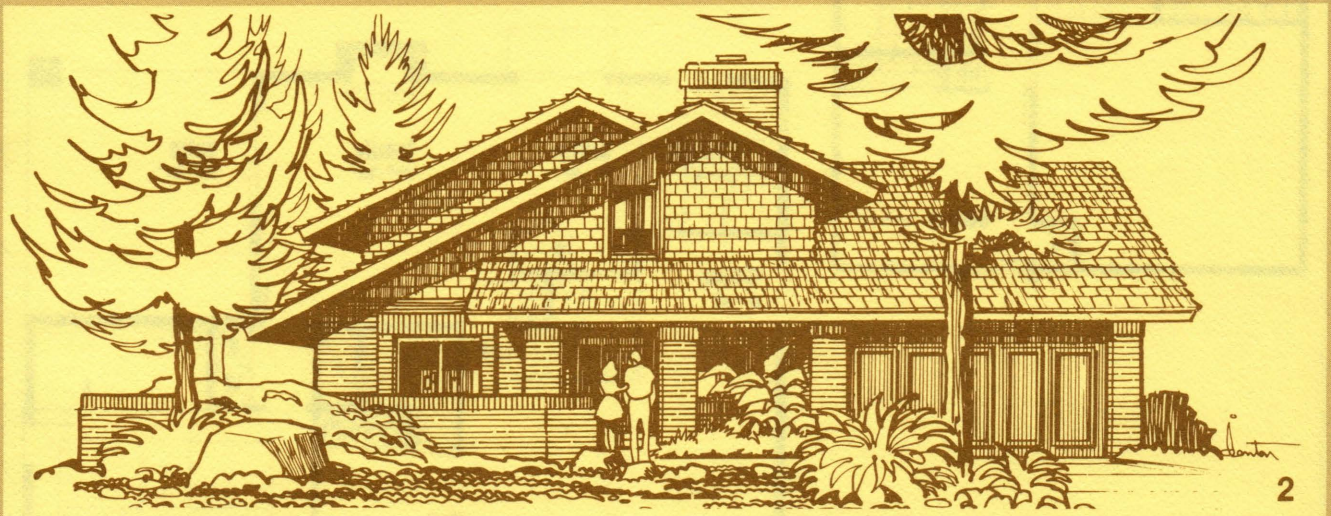
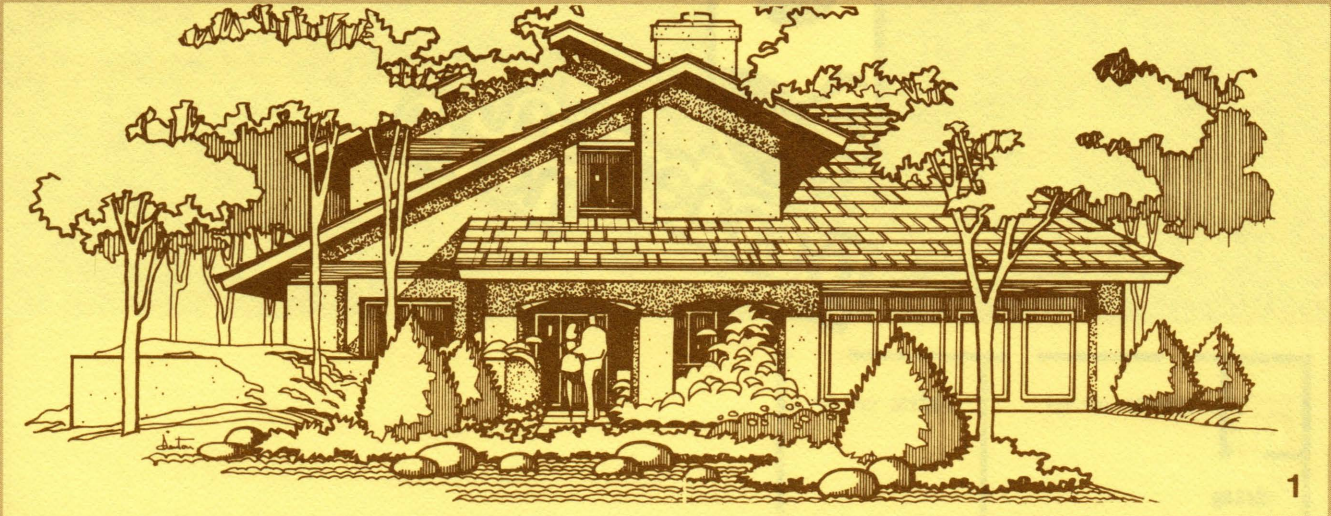
ALL ROOM MEASUREMENTS ARE APPROXIMATE

EFFECTIVE DATE: March 14, 1977 • All prices, materials and plans are subject to change without notice





FLOOR PLANS ON REVERSE SIDE



ELEVATIONS VARY IN COST

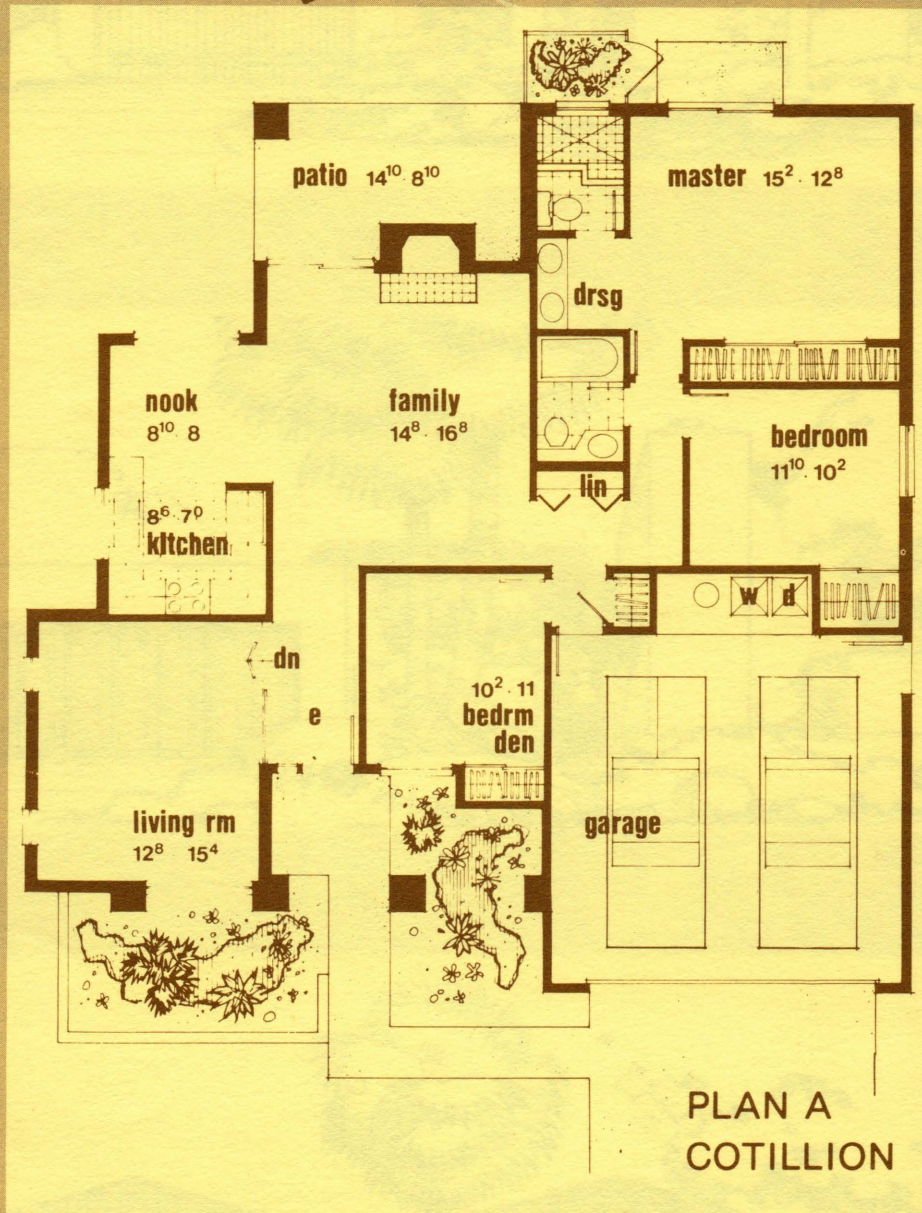
**PONDEROSA HOMES**



EFFECTIVE DATE: March 14, 1977 • All prices, materials and plans are subject to change without notice

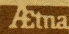
• A member of the Aetna Realty Group





ELEVATIONS ON REVERSE SIDE

# PONDEROSA HOMES

■ A member of the Aetna Realty Group 

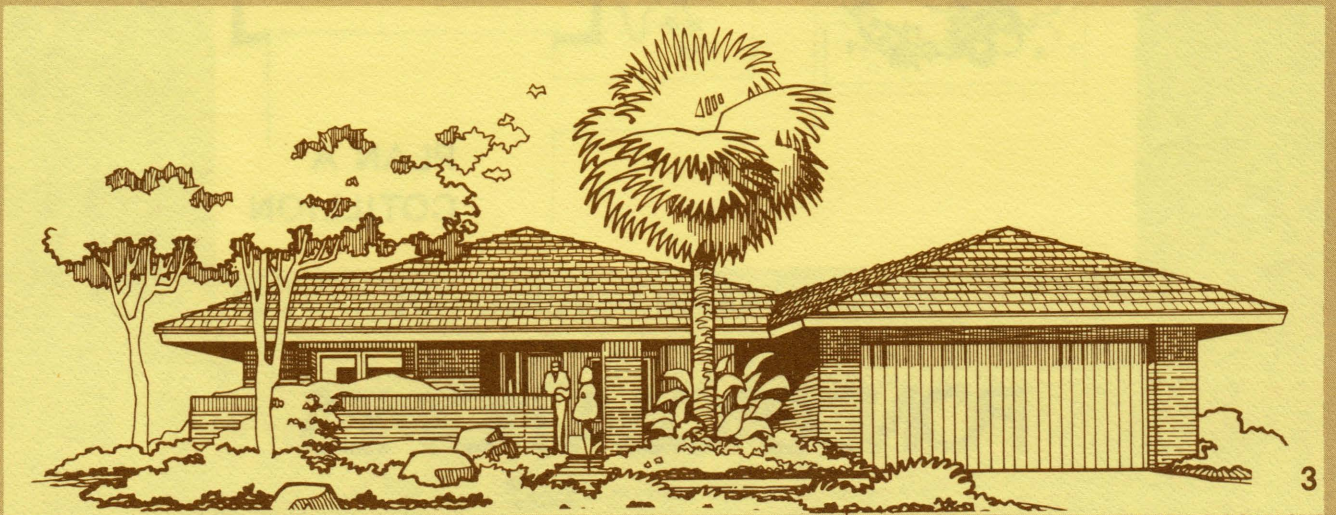
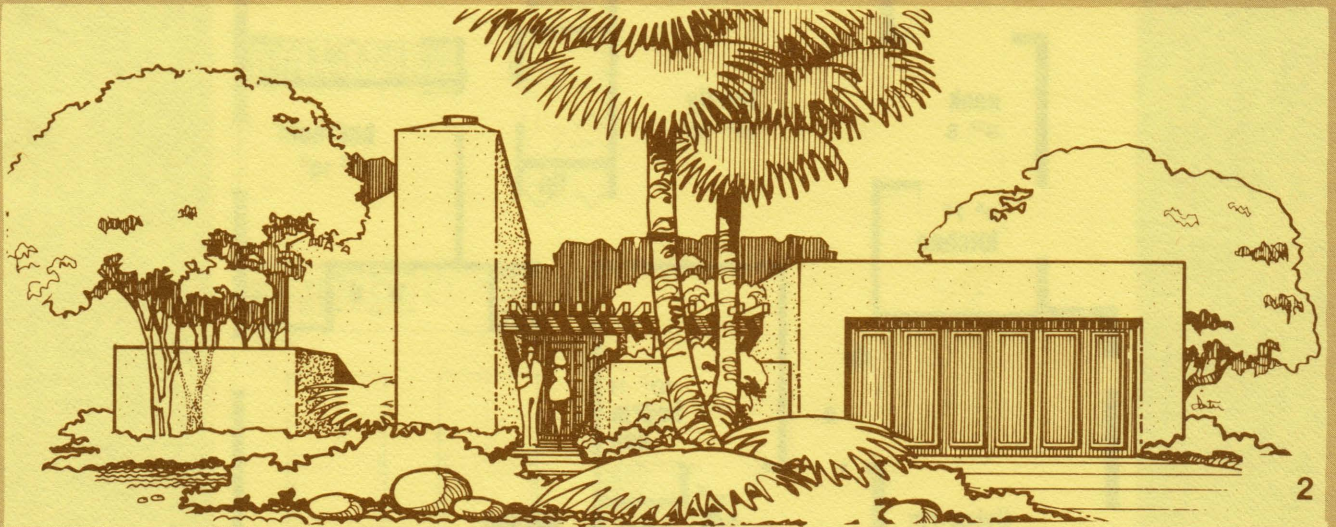
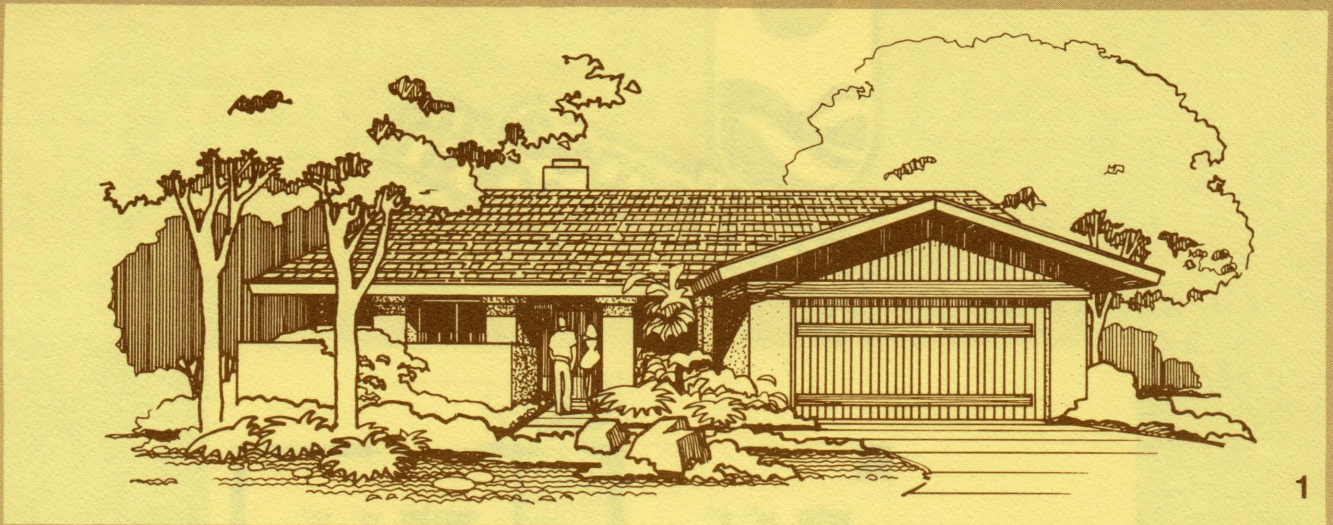
ALL ROOM MEASUREMENTS ARE APPROXIMATE

EFFECTIVE DATE: March 14, 1977 • All prices, materials and plans are subject to change without notice





FLOOR PLANS ON REVERSE SIDE



ELEVATIONS VARY IN COST

**PONDEROSA HOMES**



EFFECTIVE DATE: March 14, 1977 • All prices, materials and plans are subject to change without notice

▪ A member of the Aetna Realty Group