

PLAN 3

3 Bedroom — 2 Bath

\$36,990

Prepaid Items \$340 additional

PLAN 4

4 Bedroom — 2 Bath

\$38,190

Prepaid Items \$360 additional

PLAN 5

4 Bedroom — 2 Bath (two story)

\$40,290

Prepaid Items \$370 additional

PLAN 6

4 Bedroom — 2 Bath

\$42,490

Prepaid Items \$390 additional

PLAN 7

4 Bedroom — 3 Bath (two story)

\$46,290

Prepaid Items \$430 additional

PLAN 11

3 Bedroom — 2 Bath

\$40,890

Prepaid Items \$370 additional

Since Ponderosa Homes is constantly improving its product, all prices, materials and plans are subject to change without notice.
Ponderosa North Phone Numbers: (802) 942-7520

**PONDEROSA
 HOMES**
 division of **KARLSON**



Effective Date March 19, 1976

● **FRAME CONSTRUCTION = UP TO
42% SAVINGS ON ENERGY COMPARED TO
BLOCK CONSTRUCTION**

Outstanding Features Of The Complete Home

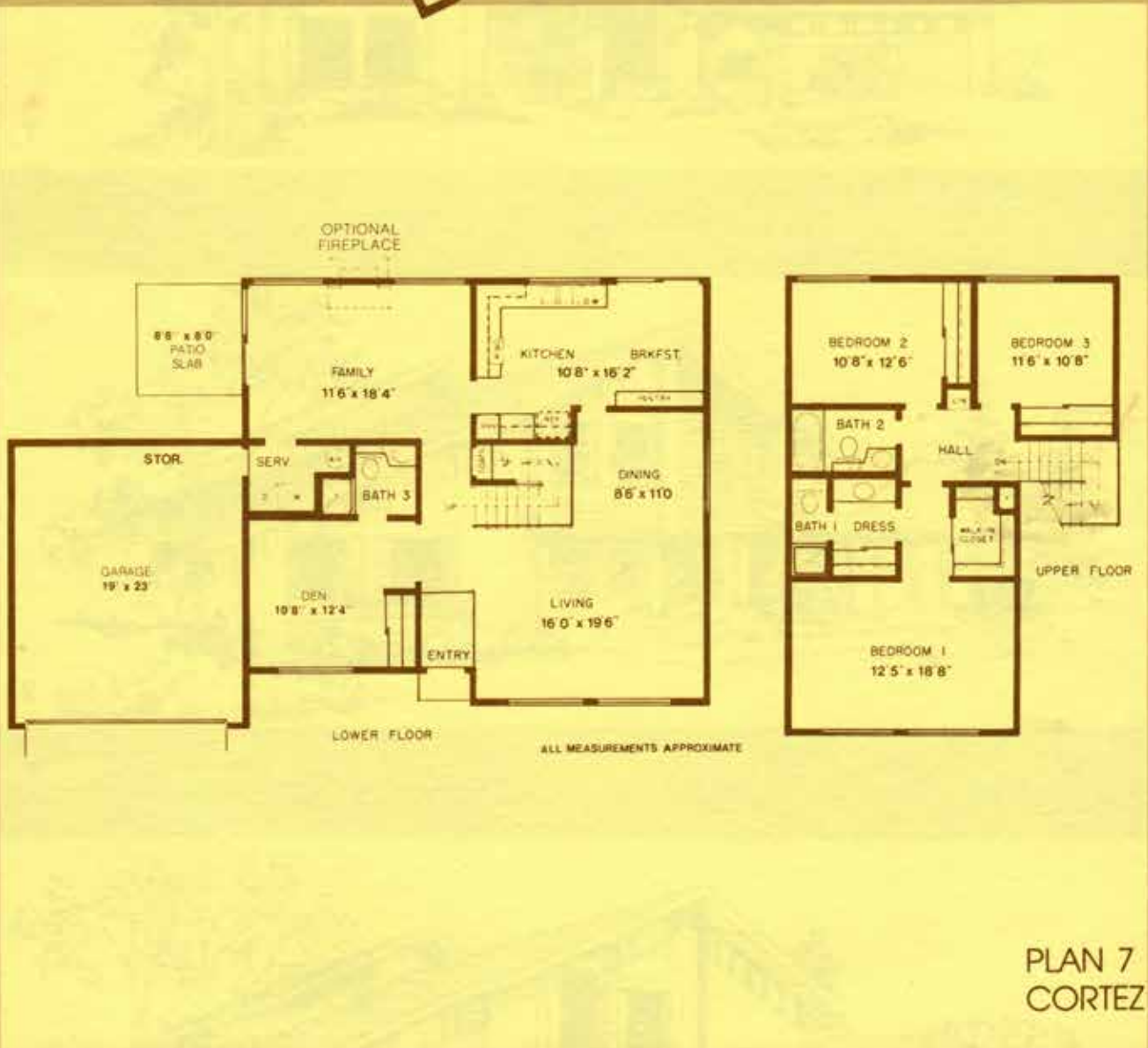
- Refrigerated air conditioning
- Completely enclosed double car garage offering extra security
- Inspiring, fresh architectural designs
- Full insulation for utmost comfort - sidewalls and ceilings
- Cool, clean electric range, oven
- Disposal
- Work saving dishwasher
- Luxurious, carefree shag carpeting throughout
- 220 line to dryer and vent
- Landscaping
- Clean, efficient electric heat
- Large laundry, service and storage rooms
- Concrete patio (covered patio 5 plan)
- Decorator selected tile in kitchen, family room and baths
- Custom quality decorator lighting fixtures
- Large sliding, safety glass patio doors
- Spacious kitchens with country-size views
- Cultured marble vanity tops
- Complete six-foot rear yard fencing
- Shower door enclosure
- Pool size lot

Ponderosa Homes builds a complete home that's ready for gracious living the day you move in.

We build a quality home with painstaking care in stylings that actually complement nature, PONDEROSA NORTH represents painstaking care in buiding for environmental living and the culmination of years in architectural refinement.

The "options" you'll find in other homes are standard features (see exclusive features) at PONDEROSA NORTH. The custom features, fireplace and shake roof, are offered at the lowest possible cost for added enjoyment of your home. Your Ponderosa representative has details.

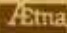




PLAN 7
CORTEZ

ELEVATIONS ON REVERSE SIDE

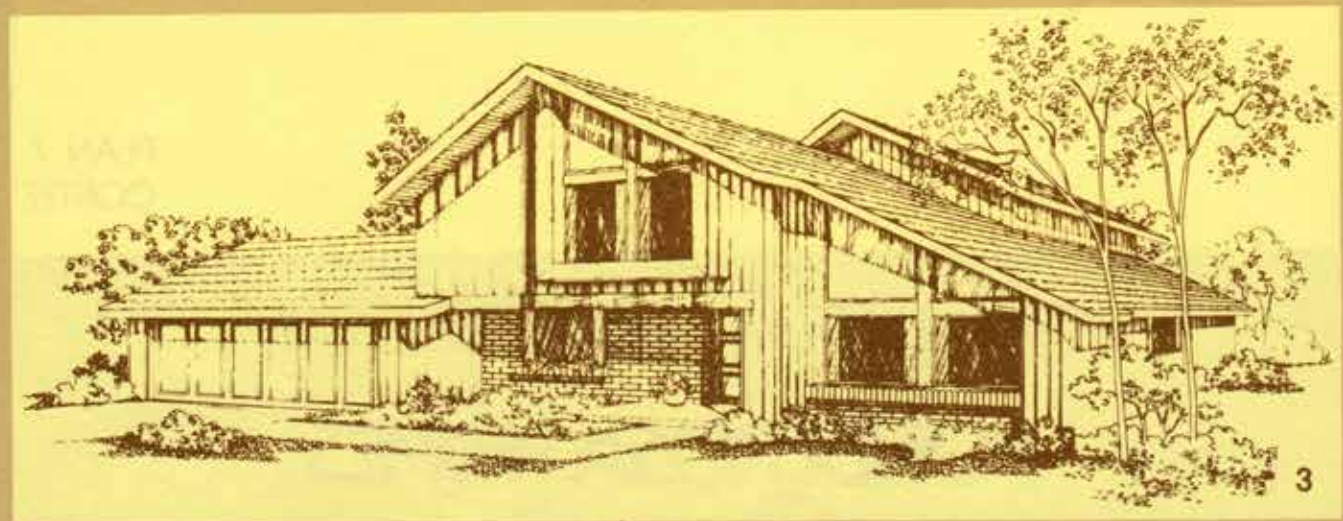
PONDEROSA HOMES

• A member of the Aetna Realty Group 

ALL ROOM MEASUREMENTS ARE APPROXIMATE



FLOOR PLANS ON REVERSE SIDE

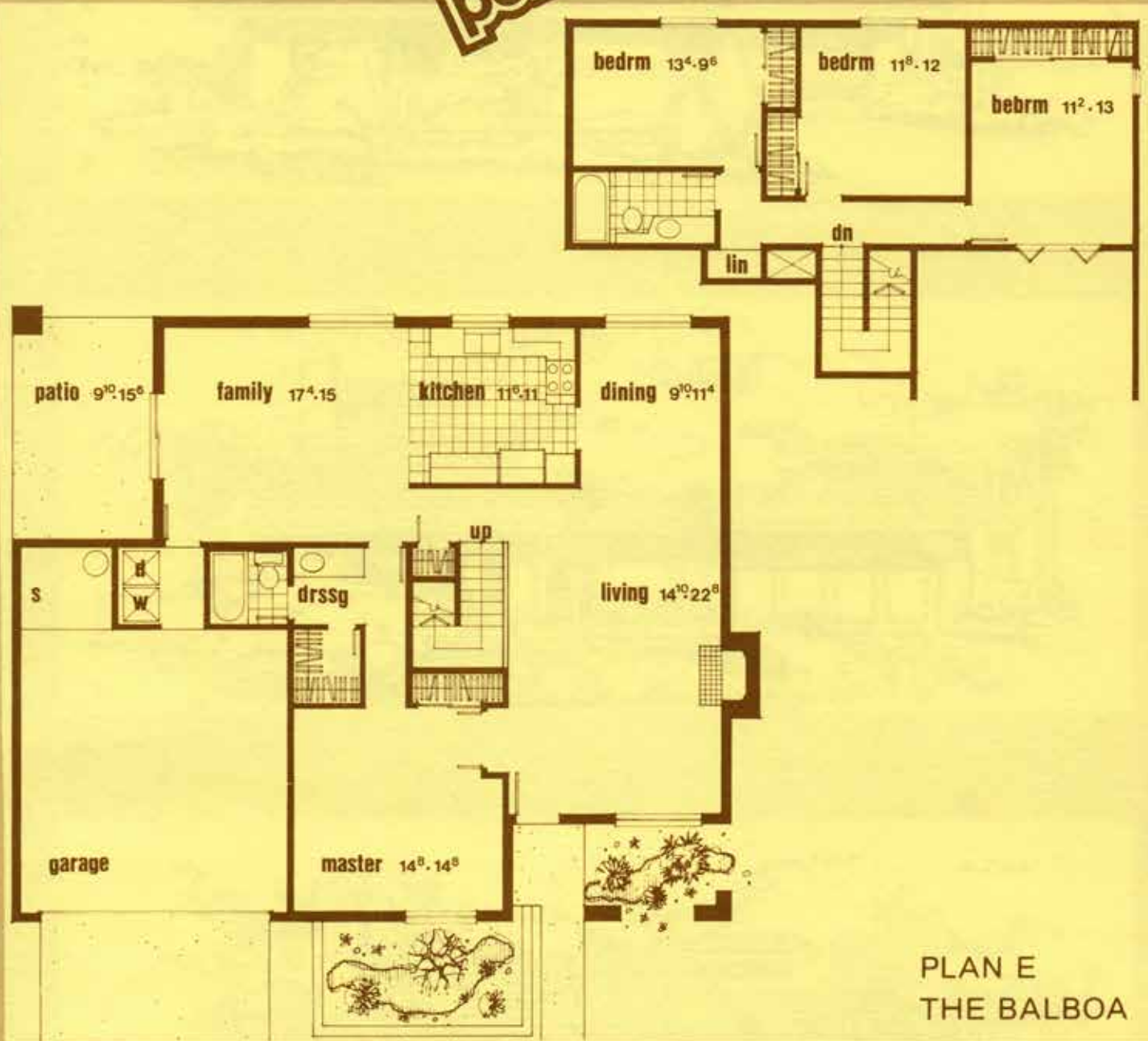


ELEVATIONS VARY IN COST

PONDEROSA HOMES




EFFECTIVE DATE: March 14, 1977 • All prices, materials and plans are subject to change without notice • A member of the Aetna Realty Group



PLAN E
THE BALBOA

ELEVATIONS ON REVERSE SIDE

PONDEROSA HOMES

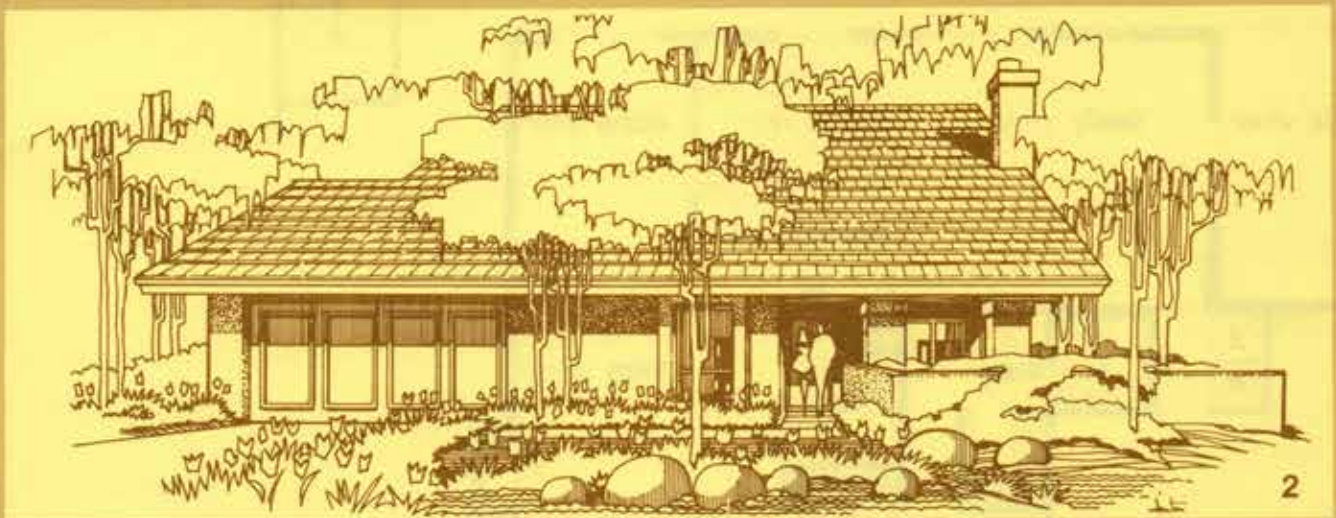
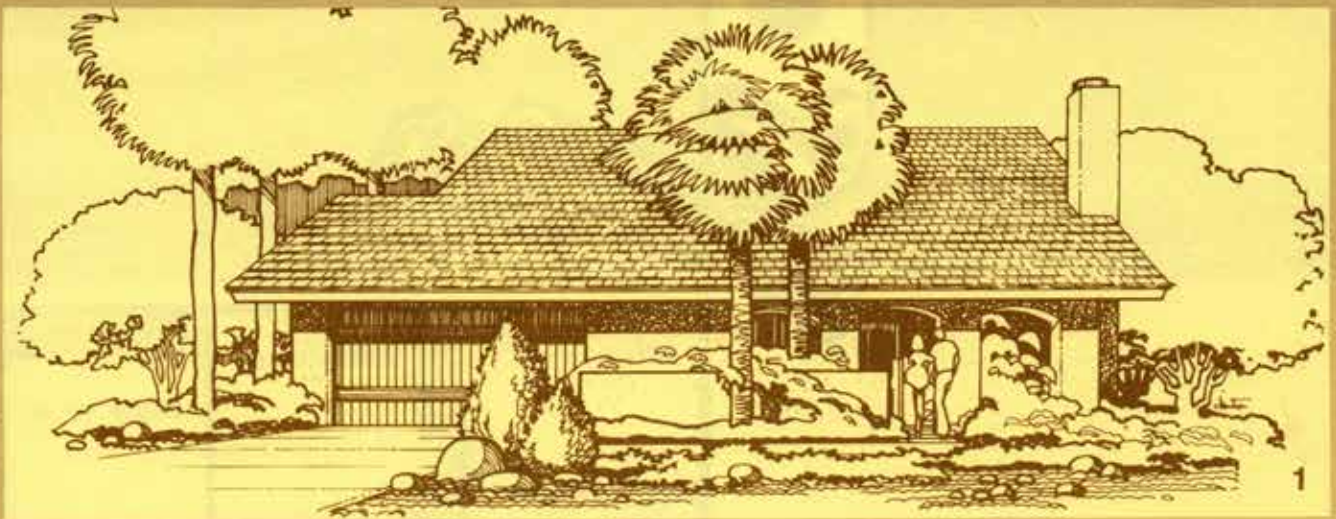
• A member of the Aetna Realty Group 

ALL ROOM MEASUREMENTS ARE APPROXIMATE

EFFECTIVE DATE: March 14, 1977 • All prices, materials and plans are subject to change without notice



FLOOR PLANS ON REVERSE SIDE

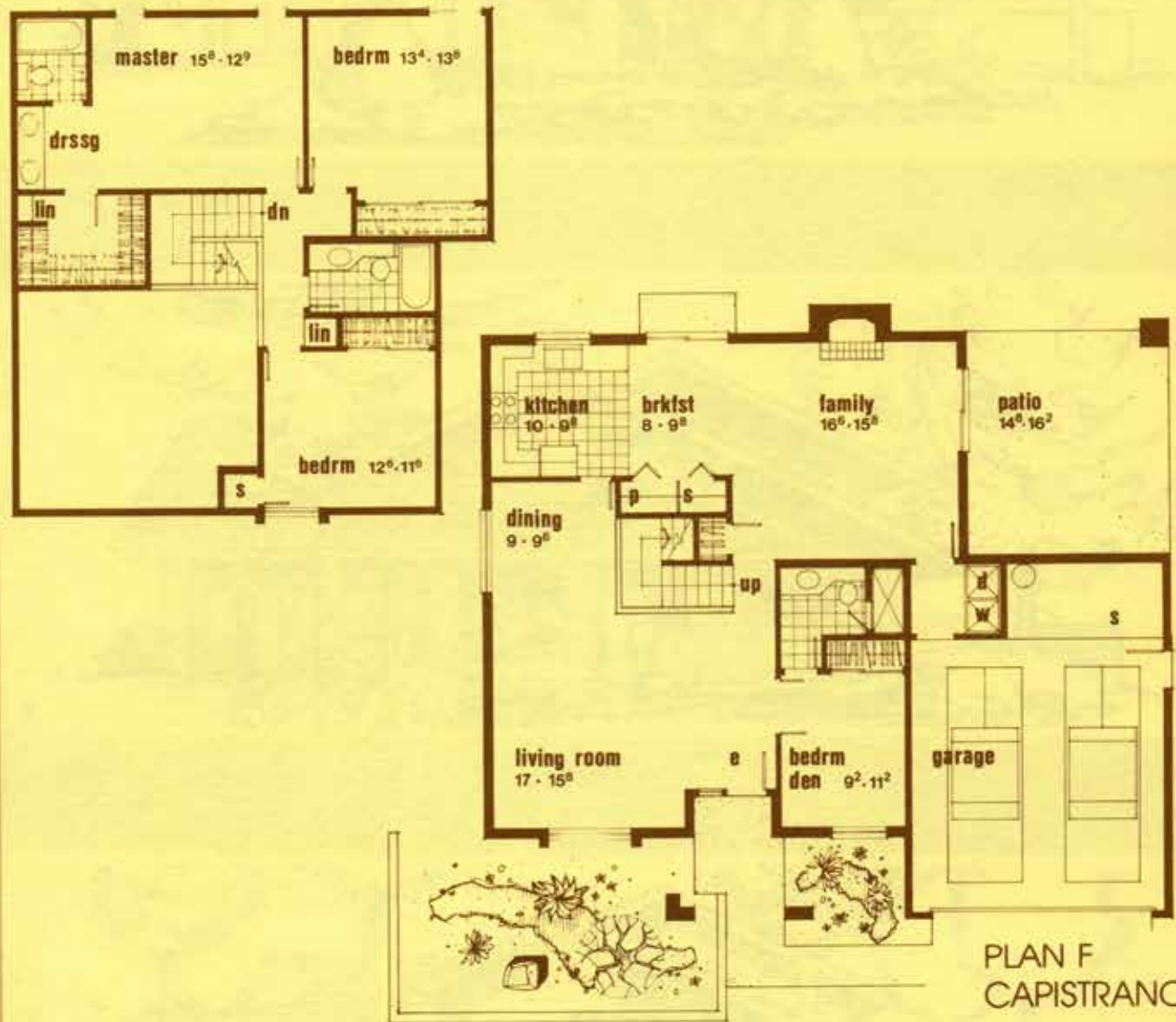


ELEVATIONS VARY IN COST

PONDEROSA HOMES

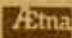


EFFECTIVE DATE: March 14, 1977 • All prices, materials and plans are subject to change without notice • A member of the Aetna Realty Group



ELEVATIONS ON REVERSE SIDE

PONDEROSA HOMES

• A member of the Aetna Realty Group 

ALL ROOM MEASUREMENTS ARE APPROXIMATE

EFFECTIVE DATE: March 14, 1977 • All prices, materials and plans are subject to change without notice



FLOOR PLANS ON REVERSE SIDE

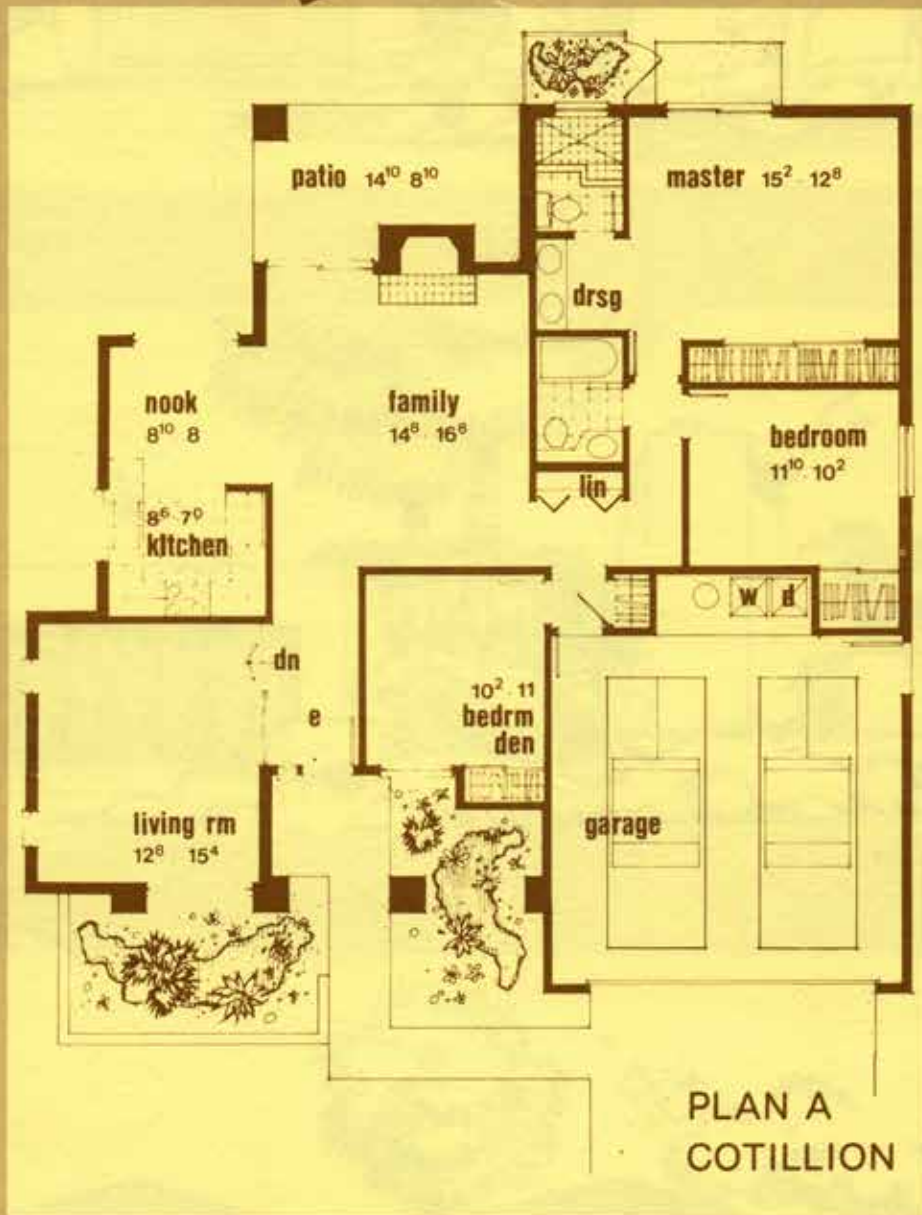


ELEVATIONS VARY IN COST

PONDEROSA HOMES

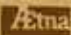


EFFECTIVE DATE: March 14, 1977 • All prices, materials and plans are subject to change without notice • A member of the Aetna Realty Group



ELEVATIONS ON REVERSE SIDE

PONDEROSA HOMES

• A member of the Aetna Realty Group 

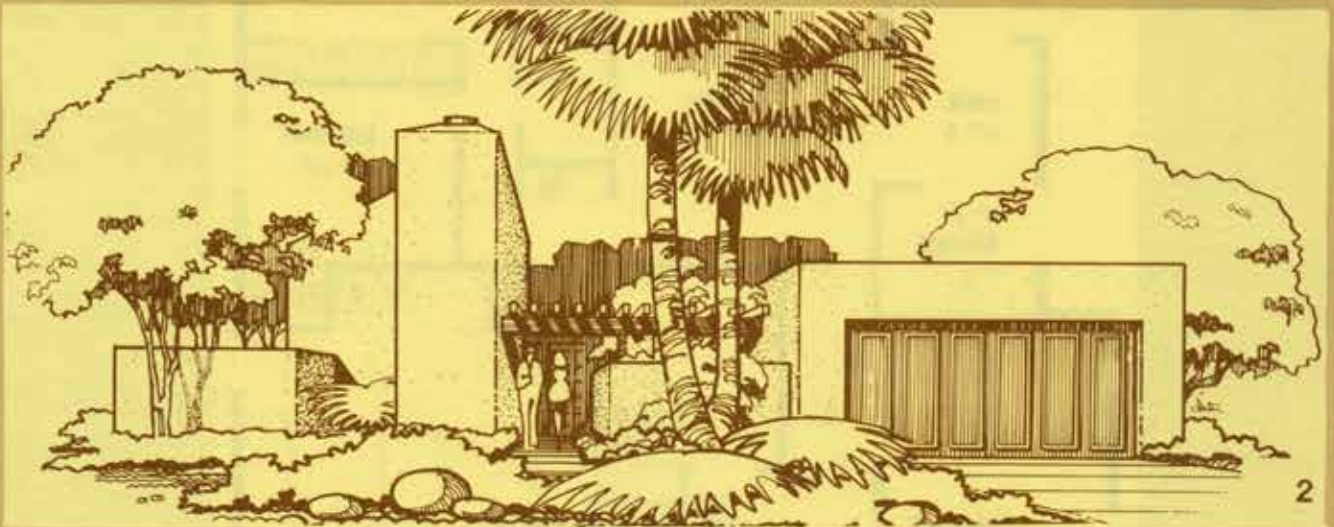
ALL ROOM MEASUREMENTS ARE APPROXIMATE

EFFECTIVE DATE: March 14, 1977 • All prices, materials and plans are subject to change without notice



EQUAL OPPORTUNITY

FLOOR PLANS ON REVERSE SIDE



ELEVATIONS VARY IN COST

FONDEROSA HOMES



EFFECTIVE DATE: March 14, 1977 • All prices, materials and plans are subject to change without notice

• A member of the Aetna Realty Group