



PONDEROSA

Country

SINGLE FAMILY HOMES



The tradition of Early California surrounds the pathways to your elegant new Ponderosa Country home. Here in the pastoral countryside of Fremont, history almost comes alive.

Nearby is legendary Niles Canyon, once the gateway to the Gold Fields of the southern San Joaquin Valley that lured thousands of adventurers who hoped to "strike it rich" in 1849. Named after Judge Niles, a prominent stockholder in the Western Pacific Railroad, the area is still crisscrossed with tracks from the famous Transcontinental Railway. Early in the 20th century, Niles Canyon again made history as the film studio locale for several of Charlie Chaplin's pioneering comedies. Even Mission Boulevard, the main thoroughfare through town, is renowned as part of the inland route of the original El Camino Real.

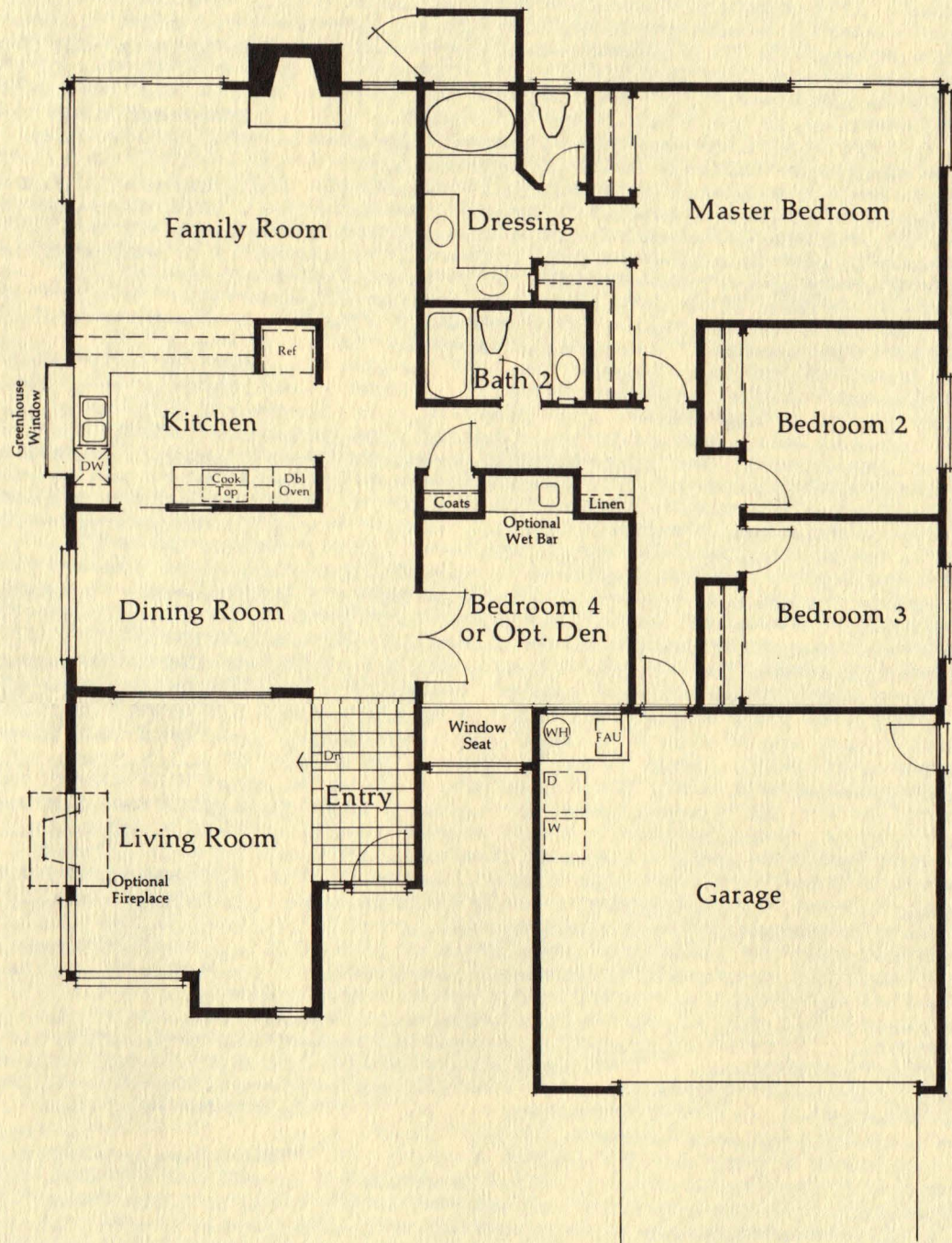
Today, country residents can combine a trip into Fremont's intriguing past with an outing at one of the city's modern shopping centers or such recreational attractions as scenic Lake Elizabeth.

Just as Fremont has its own sense of tradition, we at Ponderosa Homes have a tradition of homebuilding excellence. Distinctive architectural design, and an impressive array of quality features have become hallmarks of the Ponderosa name.

Come see for yourself. Come home to the Country lifestyle of Ponderosa Homes.

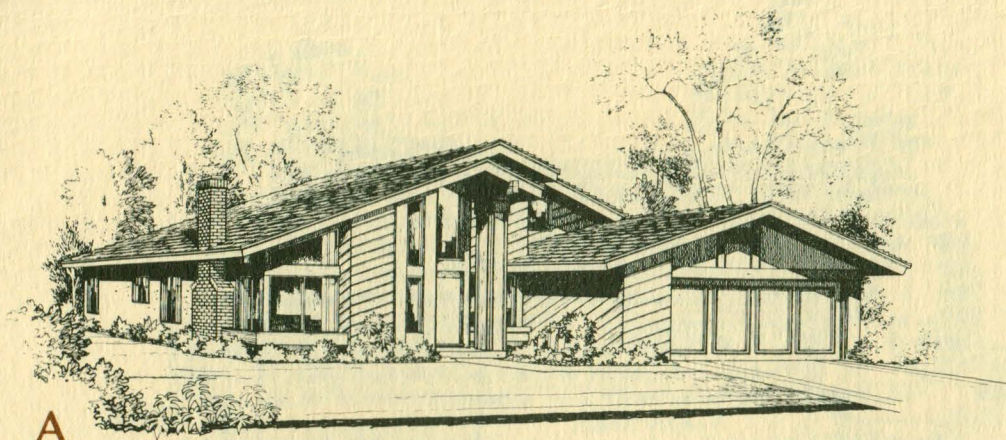
Country

The soaring covered entry way with its glass and wood provide a feeling of elegance that continues throughout the interior of this home. The large kitchen and family room combination, with the snack bar and fireplace add up to great entertaining. The master bedroom is enhanced by a dramatic vaulted beam ceiling. Two large wardrobe closets flank a master bath that features a private garden view tub. The fourth bedroom may be completed as a den with a wet bar if desired.

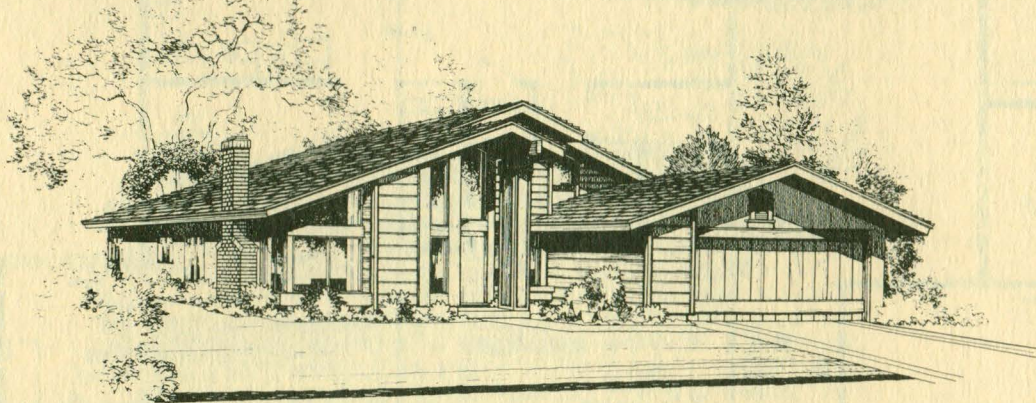


PLAN 1860

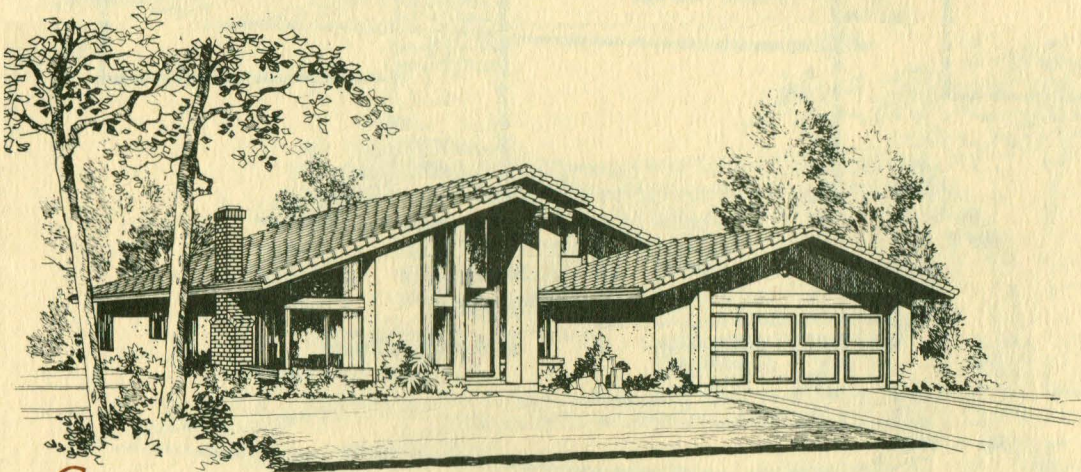
4 Bedrooms, 2 Baths.



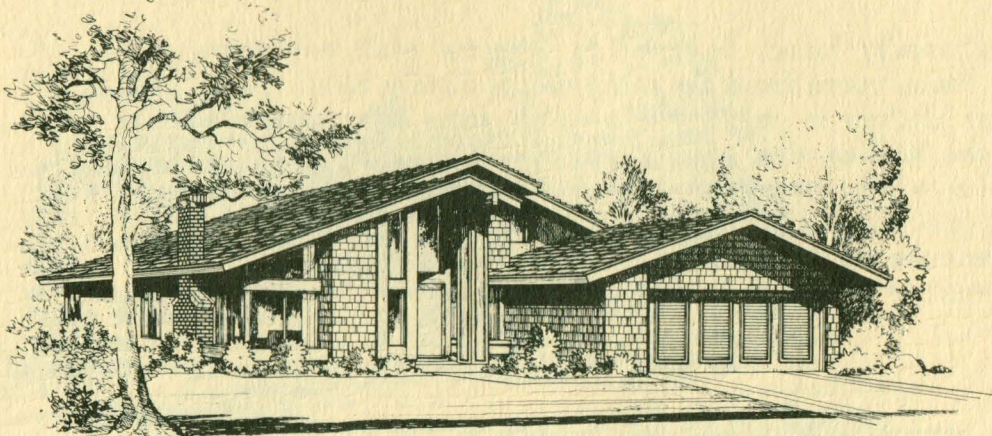
A



B



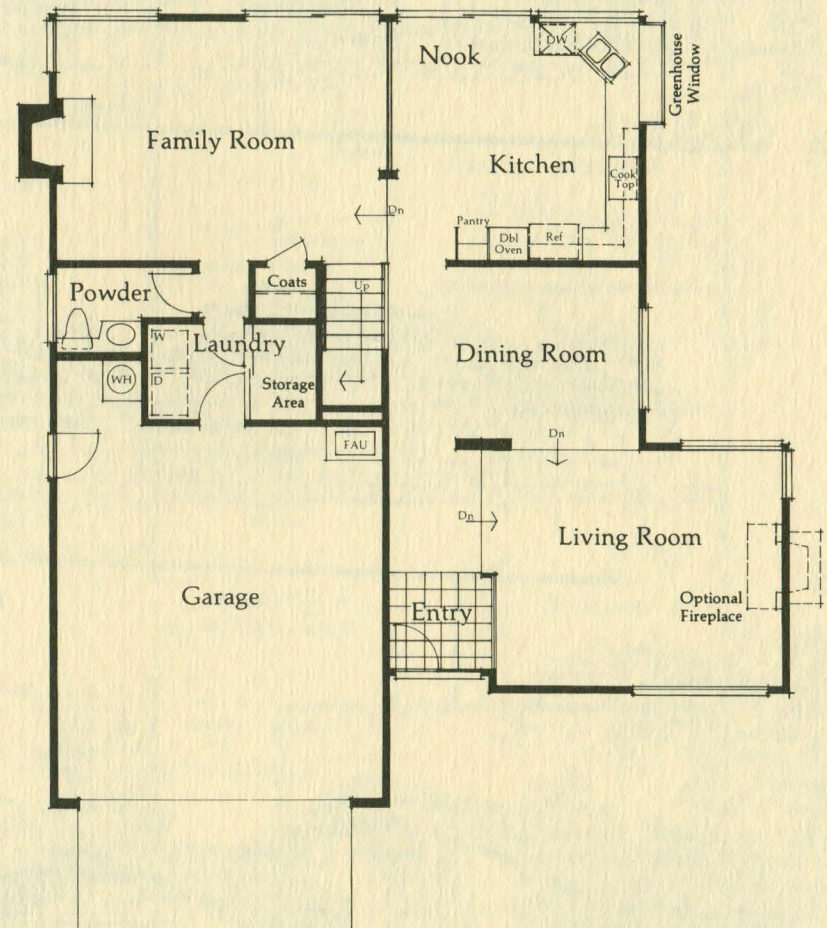
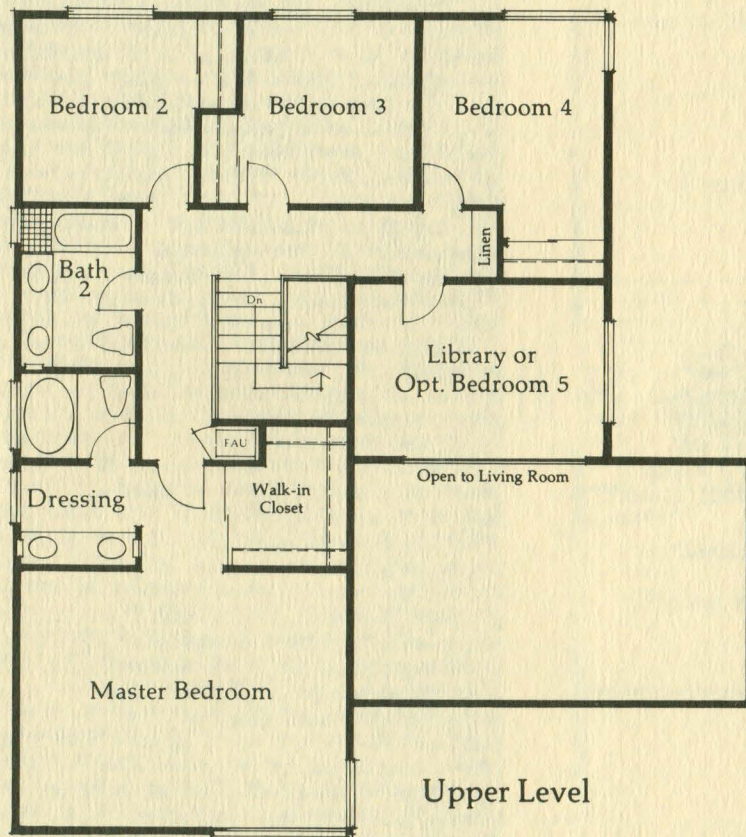
C



D



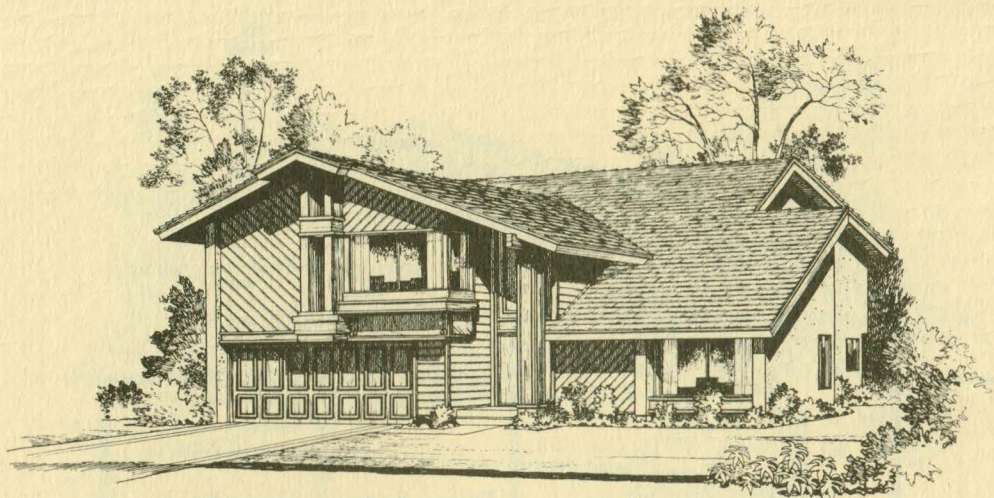
Country



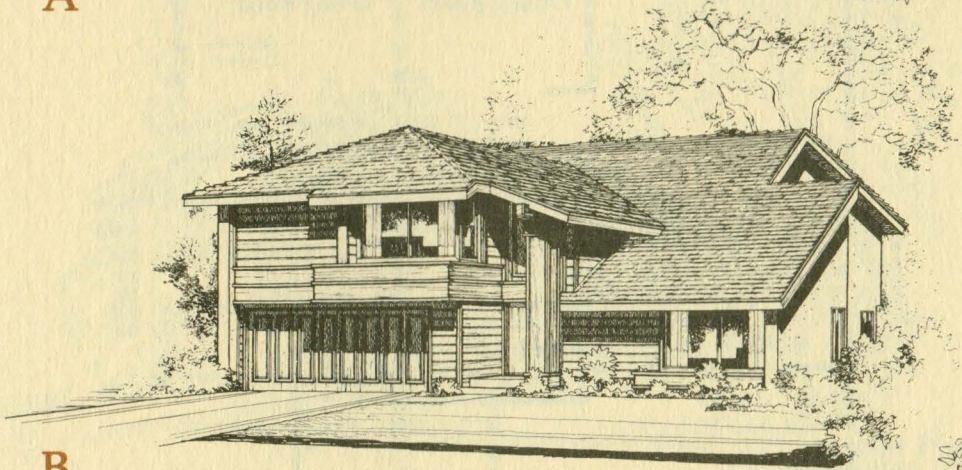
PLAN 2560

5 Bedrooms, 2½ Baths.

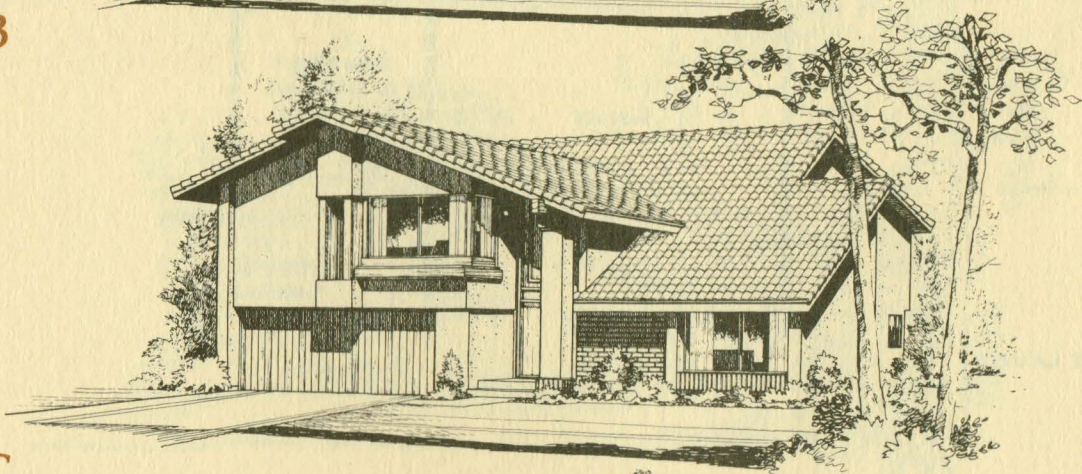
A well-planned family home, designed to separate adult entertaining in the sunken living room from the more casual family room, yet, the spacious corner kitchen is convenient to both areas. The greenhouse window over the kitchen sink adds to the spacious open feeling. The laundry room has a large storage closet perfect for items such as skis, or golf and sports equipment. Upstairs, the fifth bedroom may be an optional library that overlooks the living room. The huge walk-in closet is just one outstanding feature of the generous master bedroom suite.



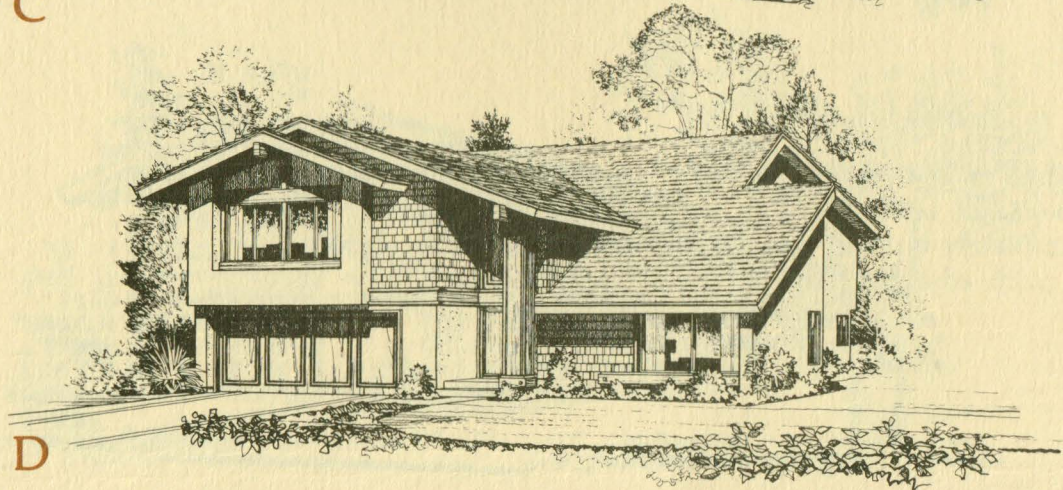
A



B



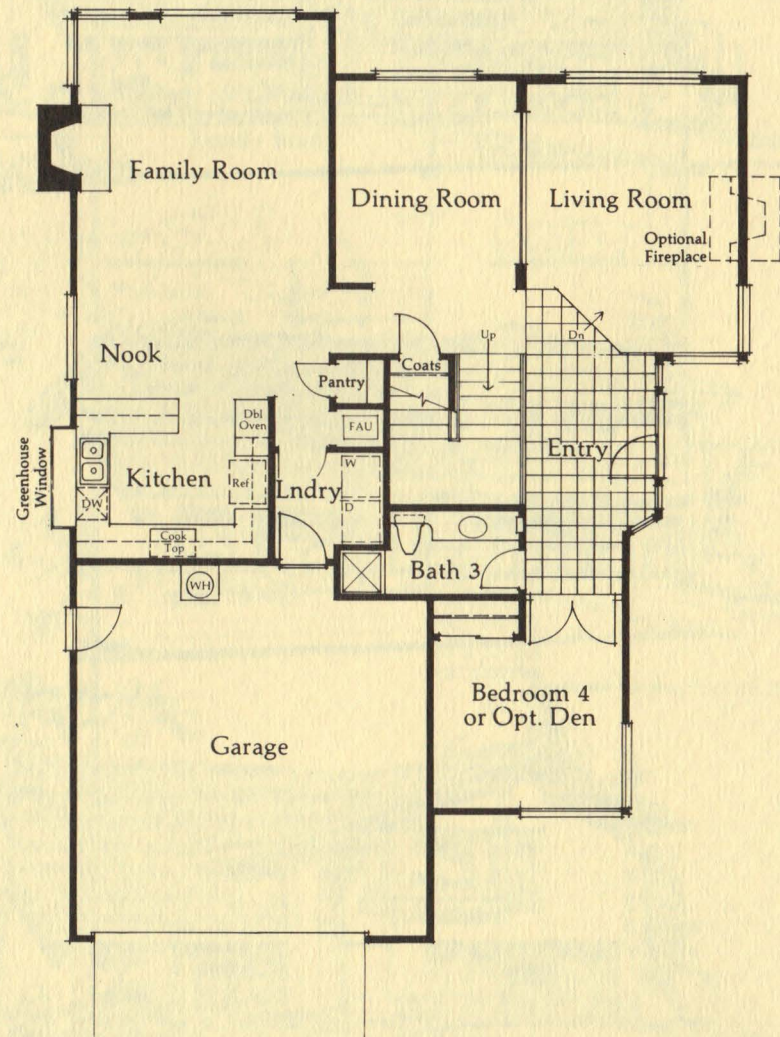
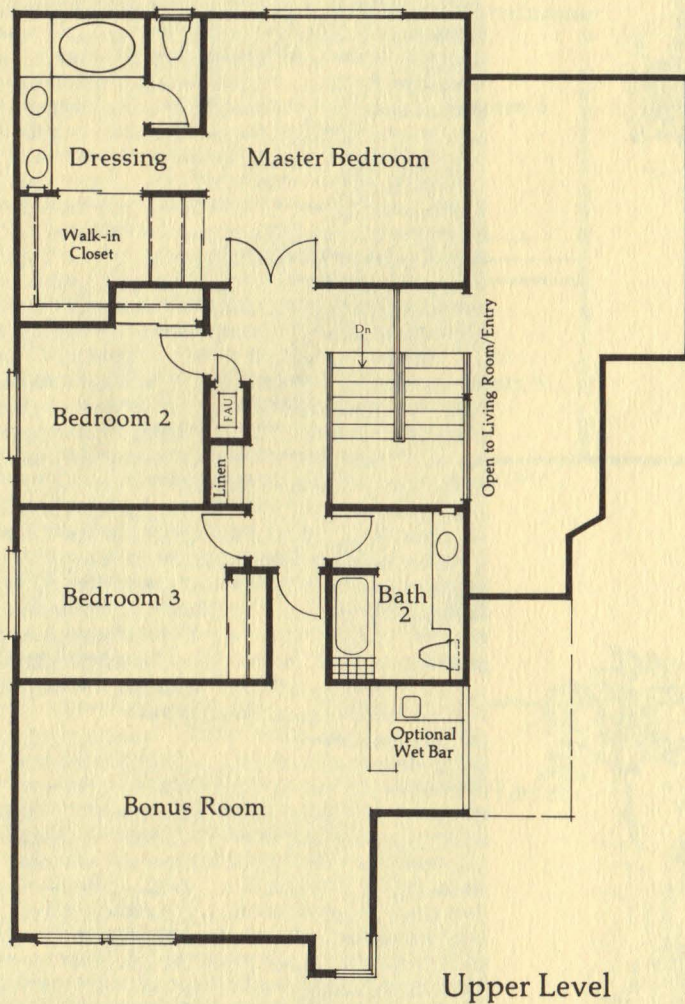
C



D



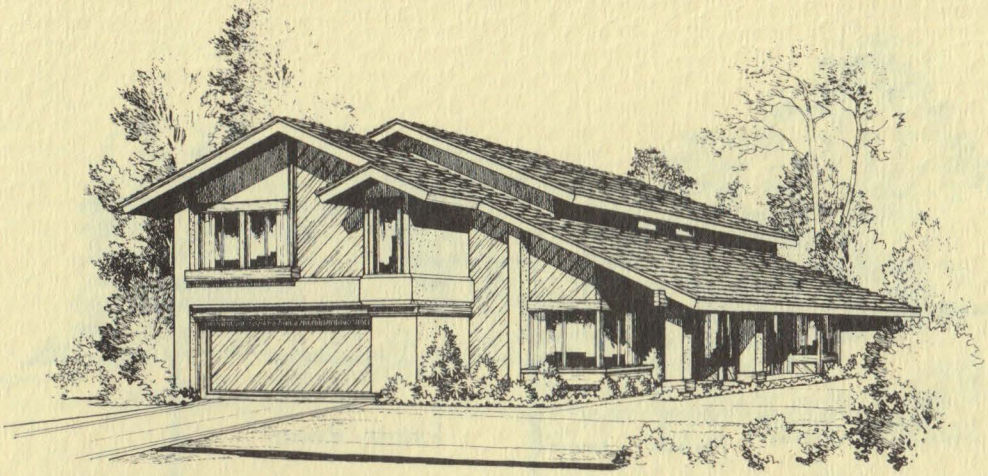
Country



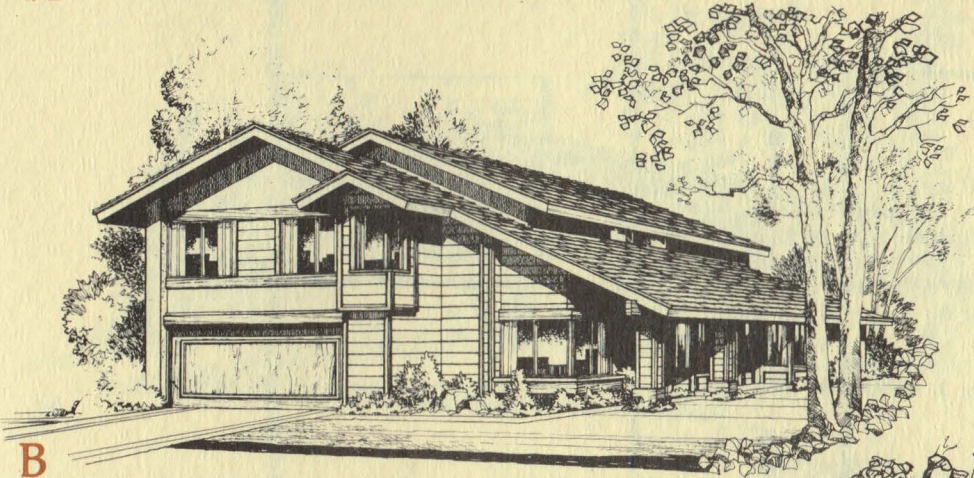
PLAN 2590

4 Bedrooms, 3 Baths,
Bonus Room.

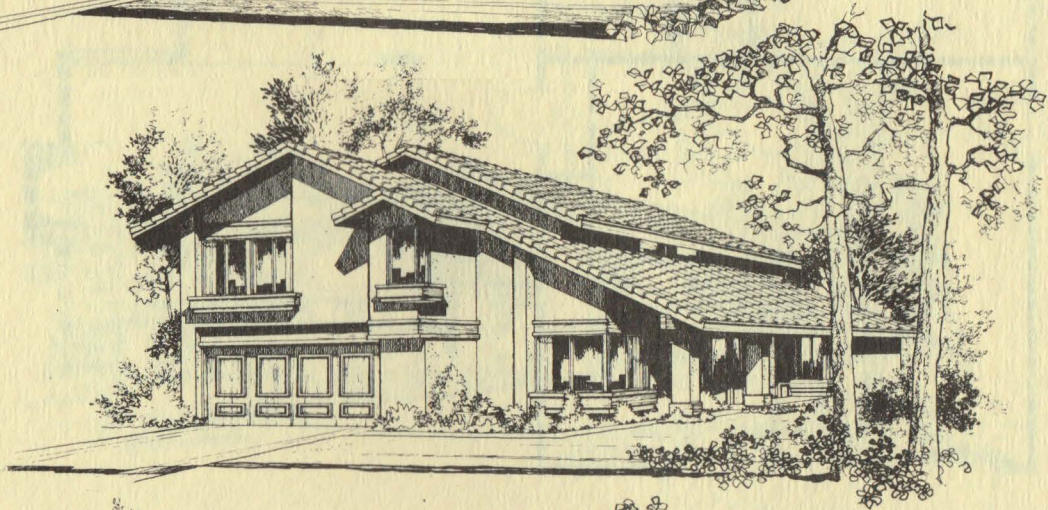
This side entry home is laid out much like Plan 2240, with one major addition—a large, versatile activities room on the upper level. This bonus room features a completely built-in wet bar that overlooks the den below. The 4th bedroom with adjacent bath is perfect for a live-in relative or guest.



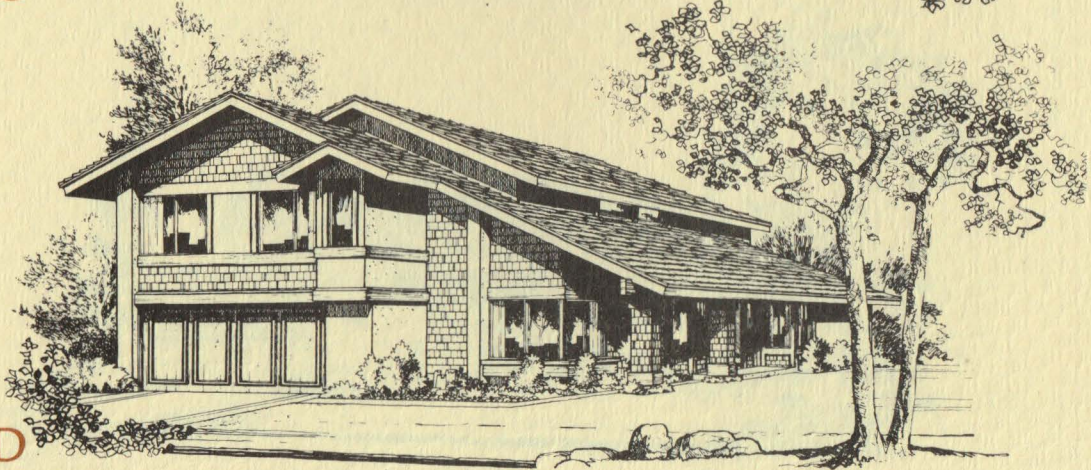
A



B



C

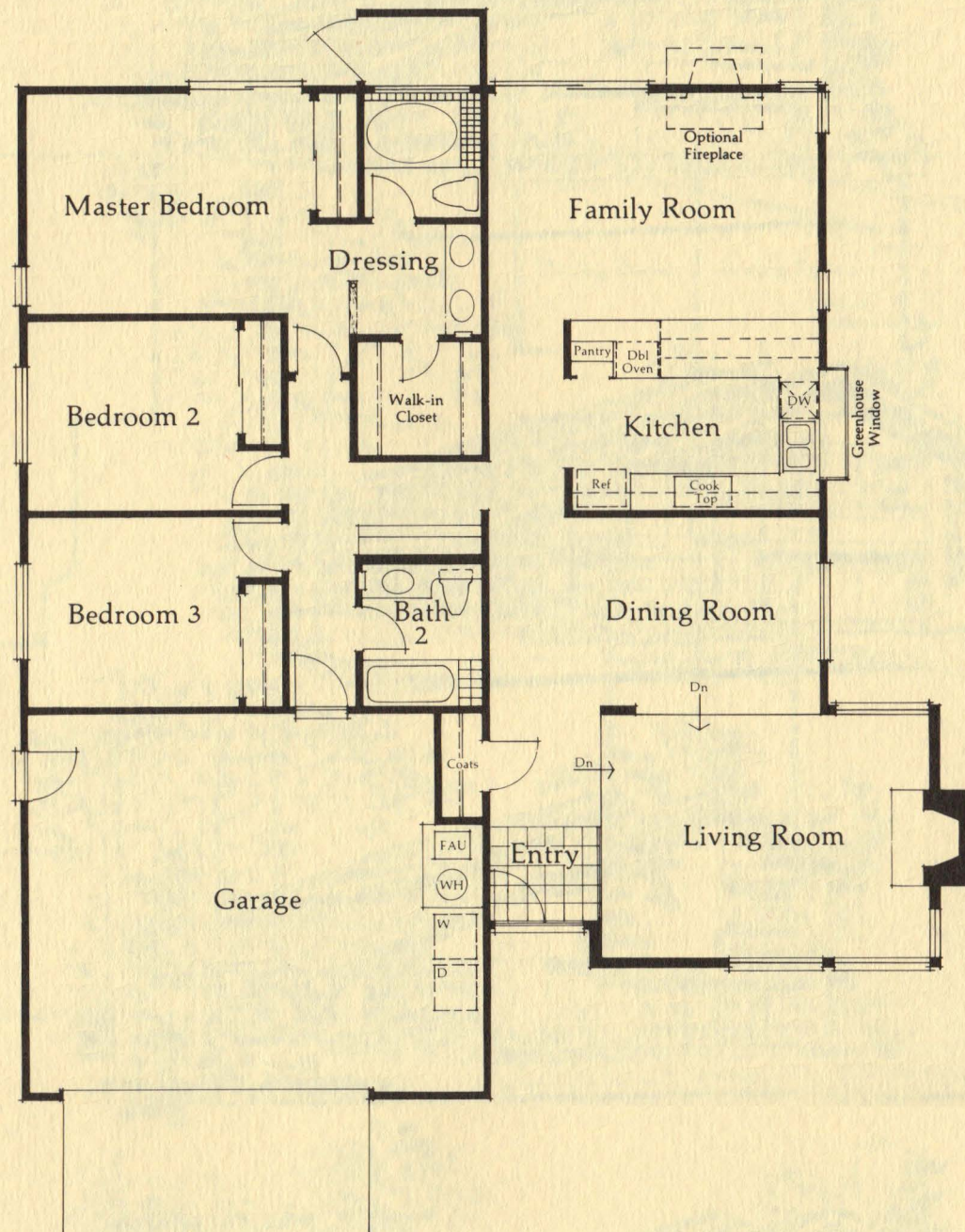


D



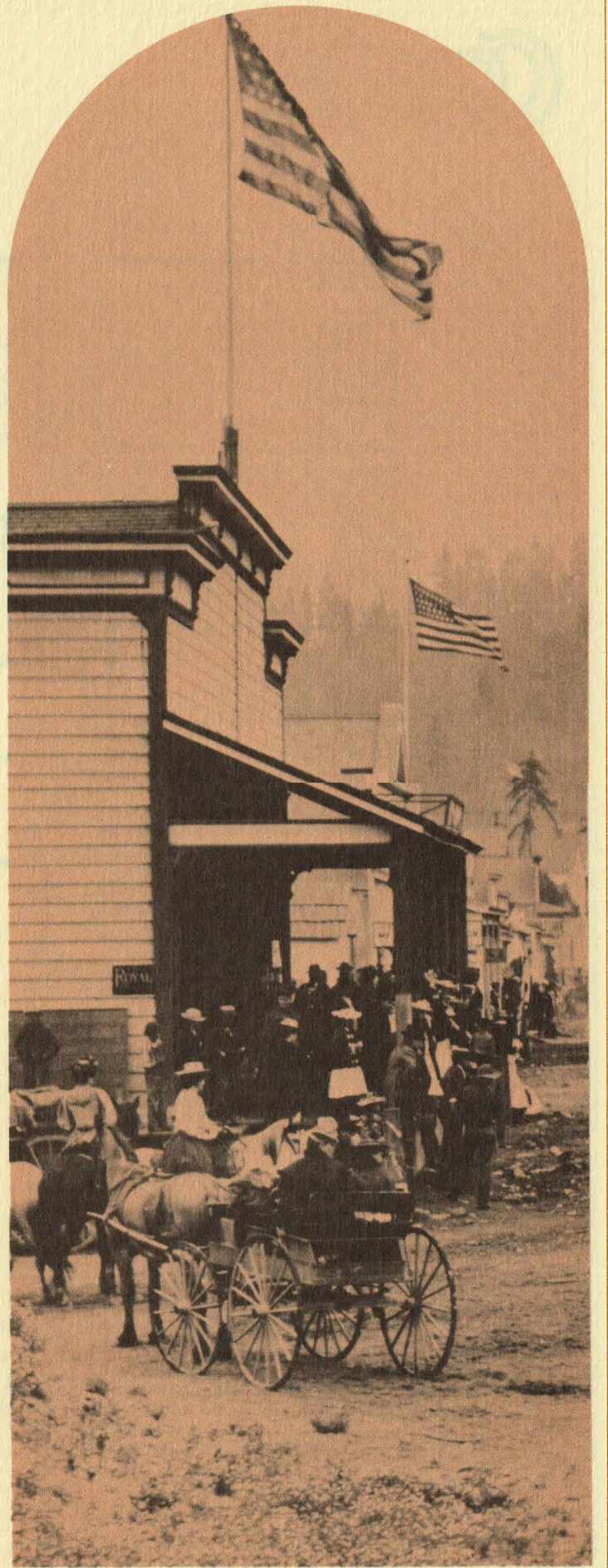
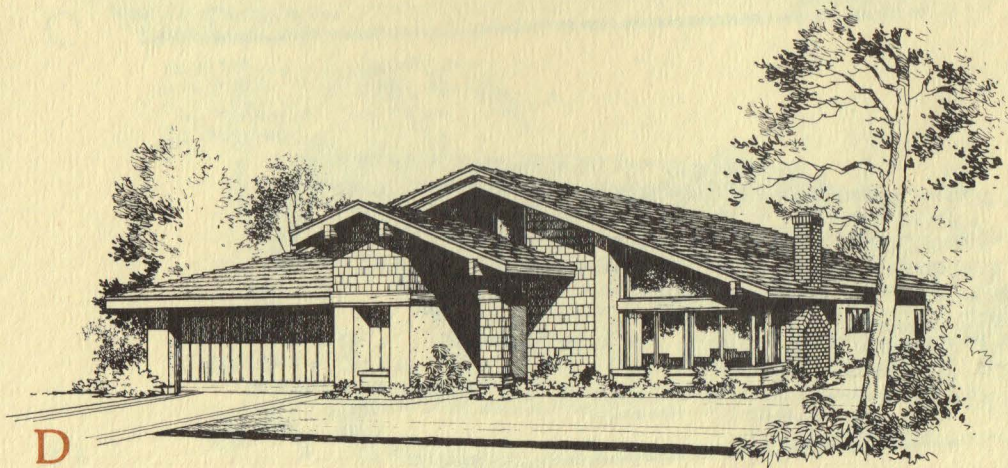
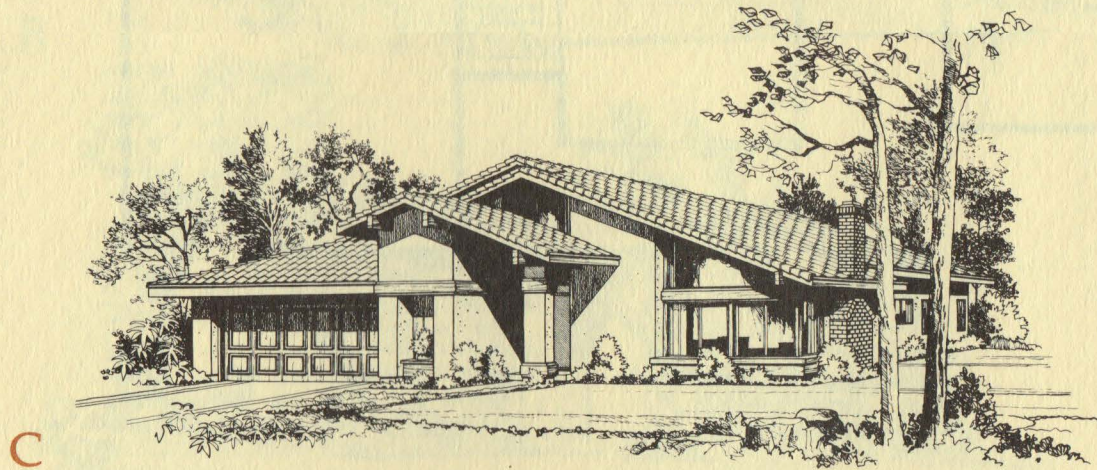
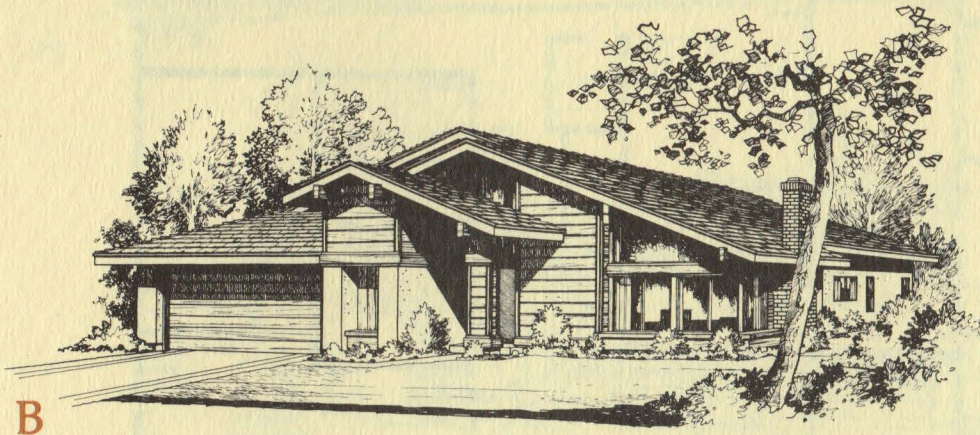
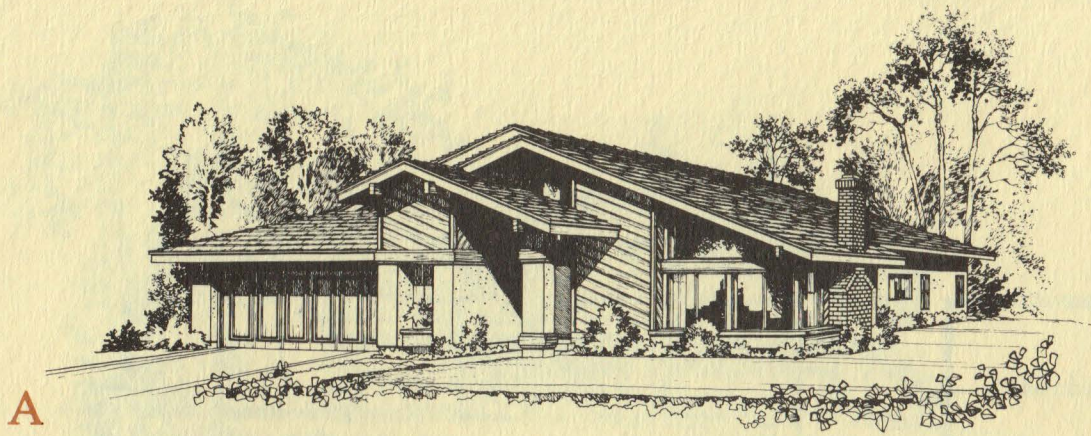
Country

The high vaulted ceilings throughout the entertaining area of this home add to the feeling of generous spaciousness. The U-shaped kitchen is separated from the family room by a counter height eating bar for informal dining. The greenhouse window over the kitchen sink opens the area to the garden. The bedroom areas are completely separated for privacy. The master bedroom suite features a large walk-in closet and delightful garden bath that looks out onto a private patio.

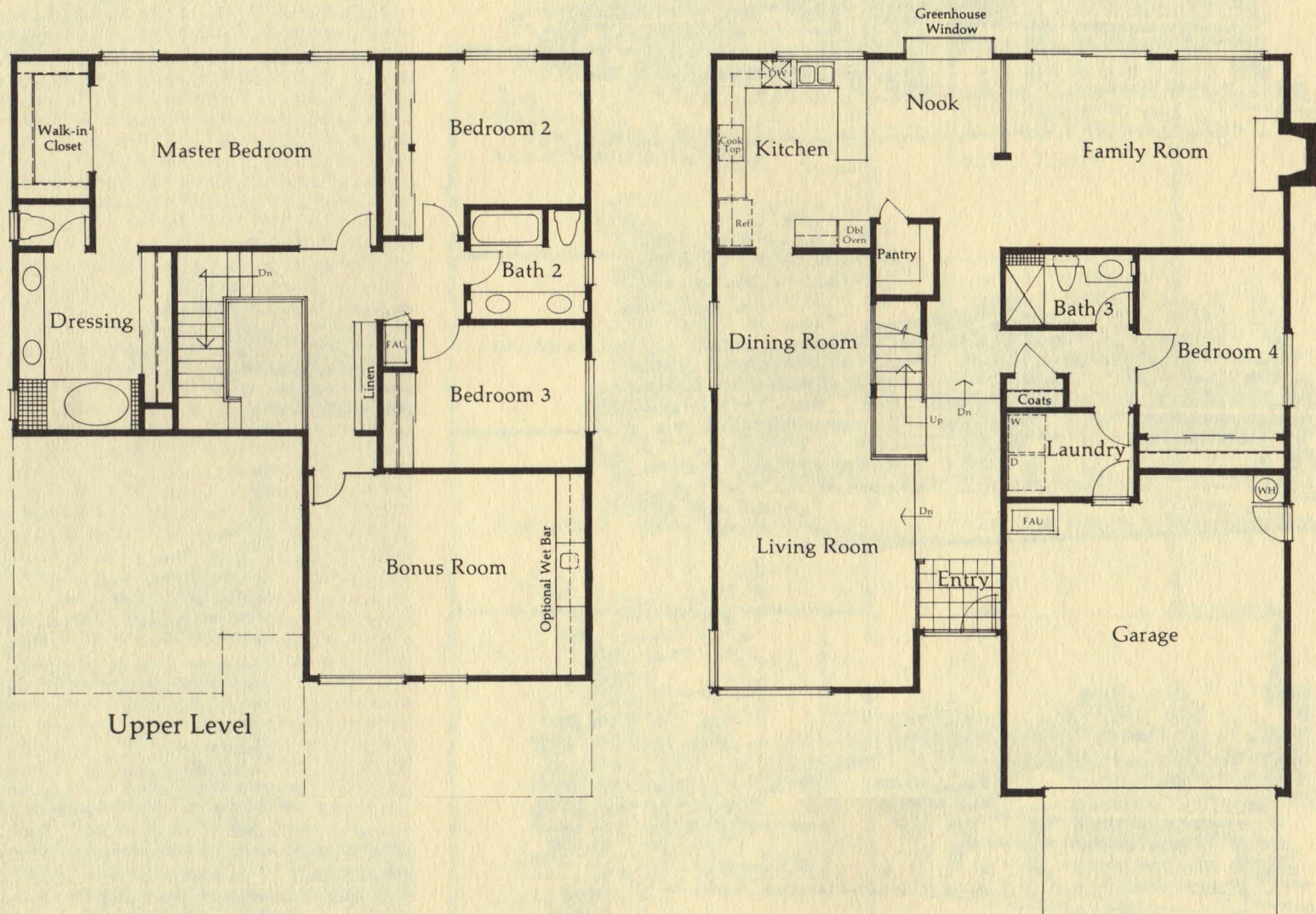


PLAN 1695

3 Bedrooms, 2 Baths.



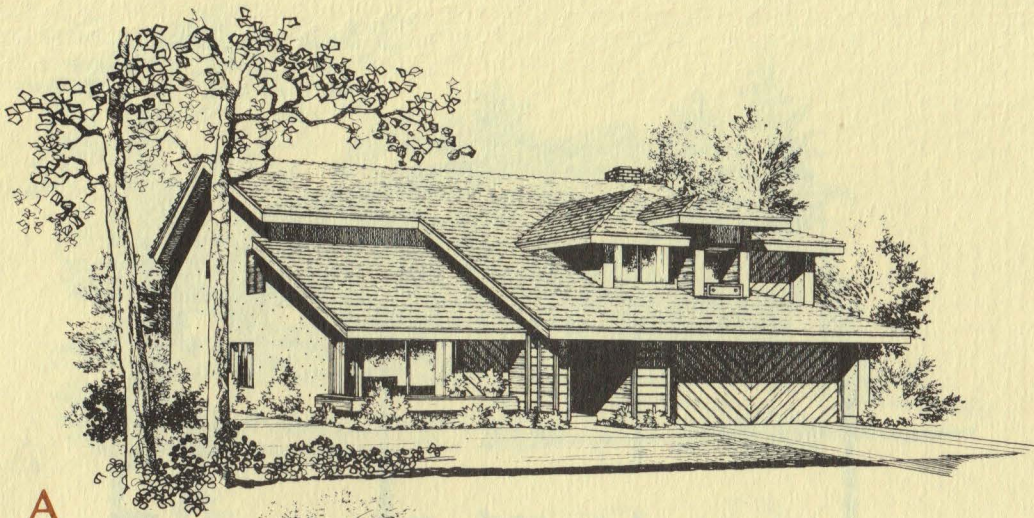
Country



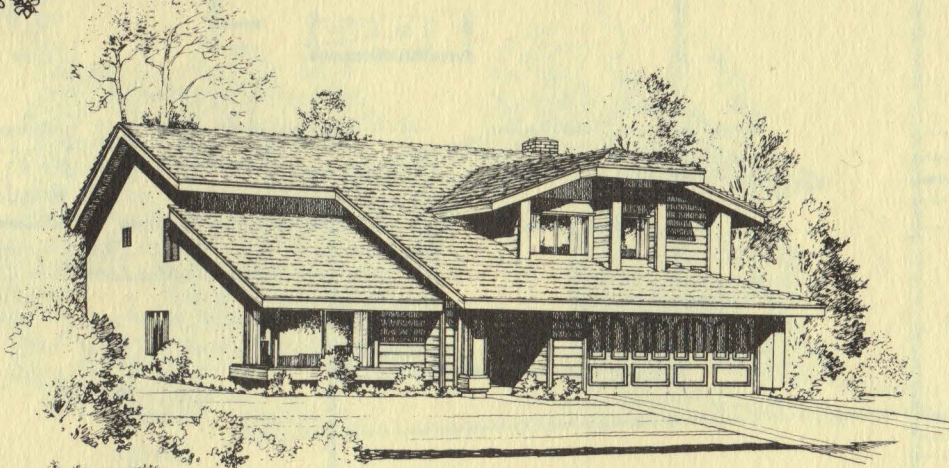
PLAN 2750

4 Bedrooms, 3 Baths,
Bonus Room

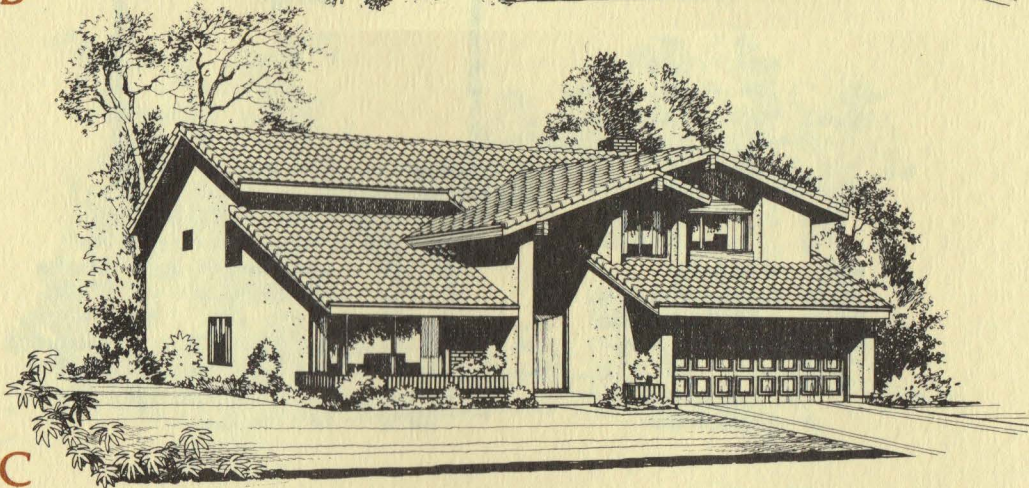
This beautiful home with all the features of Plan 2475, including a walk-in pantry and oversized laundry area also provides a large bonus room, which serves beautifully as a completely separate activity center for either children or adults.



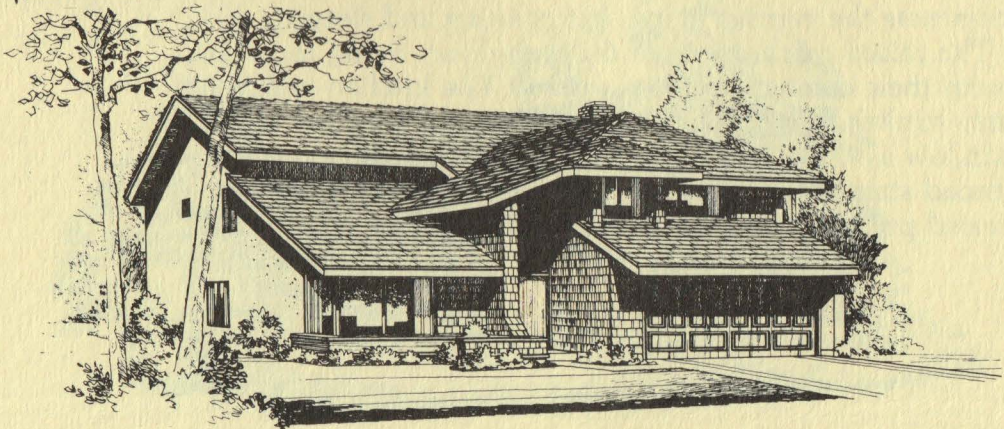
A



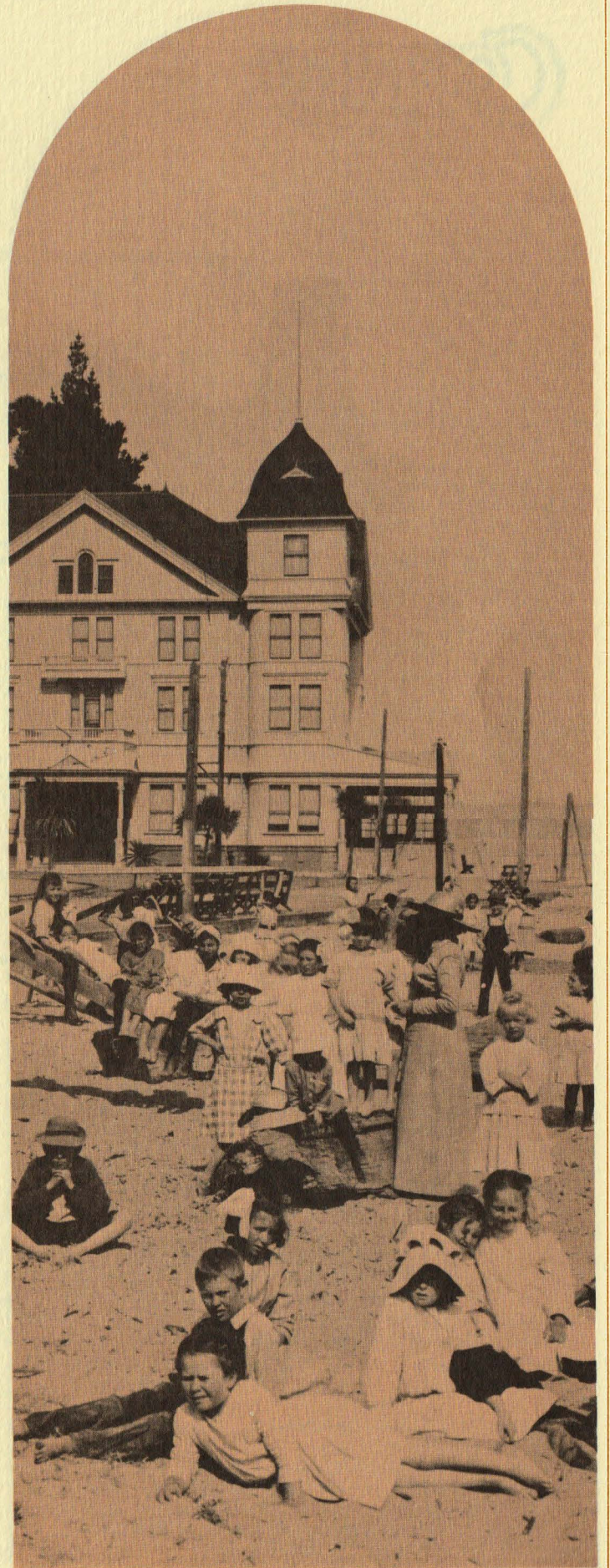
B



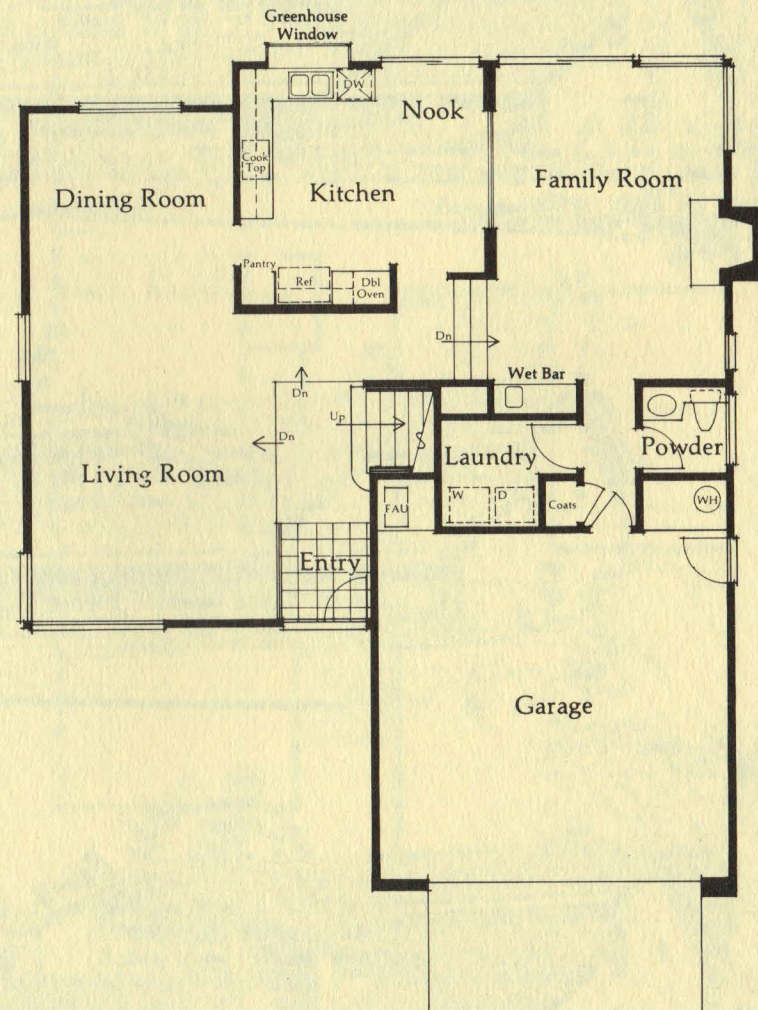
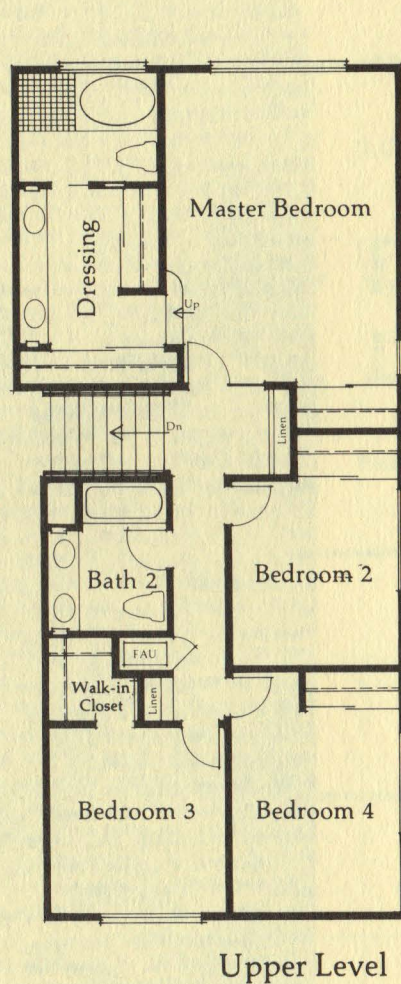
C



D



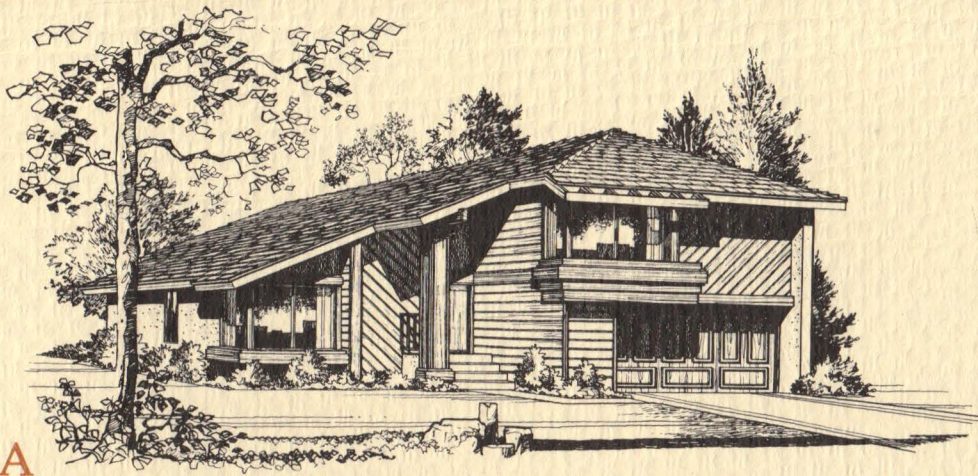
Country



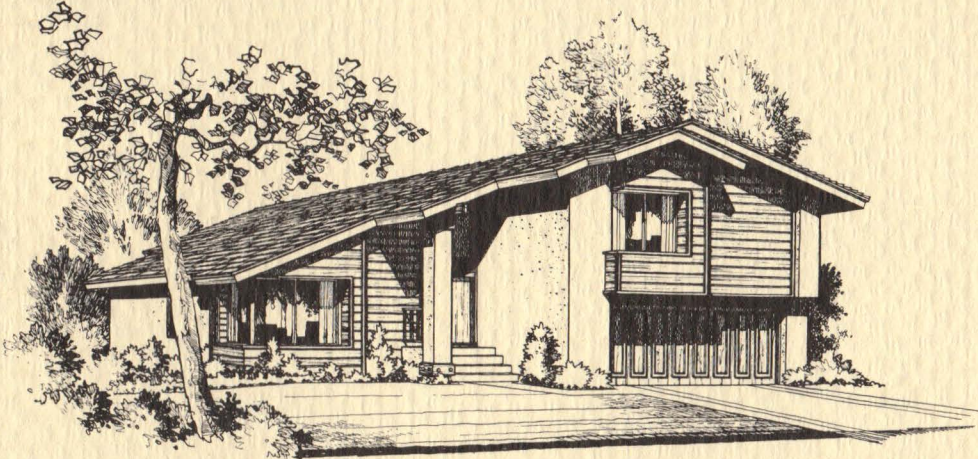
PLAN 2305

4 Bedrooms, 2½ Baths.

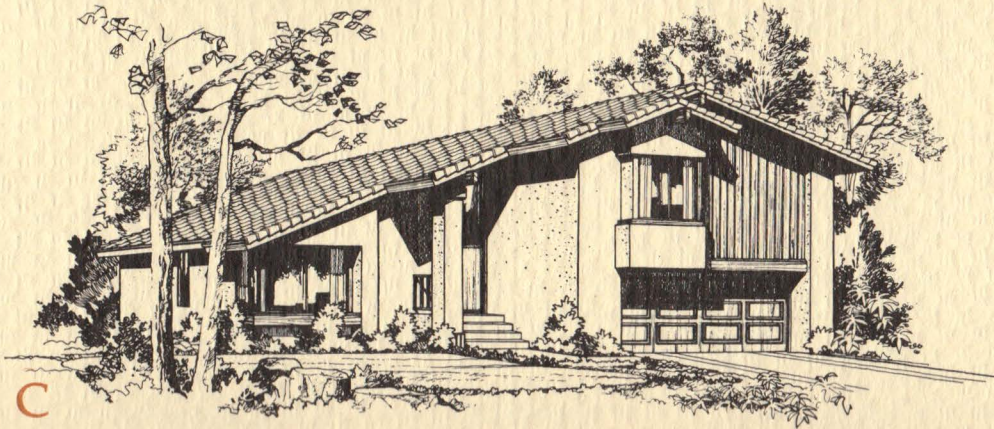
Multi-levels accentuate the various living, entertaining and sleeping areas of this design. The raised entry opens to the step-down living room and dining rooms with their common vaulted ceiling. The kitchen and nook overlook the cozy sunken family room with wet bar and fireplace. Again, a greenhouse window over the kitchen sink adds to the open feeling of the entire area. A broad staircase leads to the four bedrooms upstairs, which features an elevated private master bath and dressing room in the master suite.



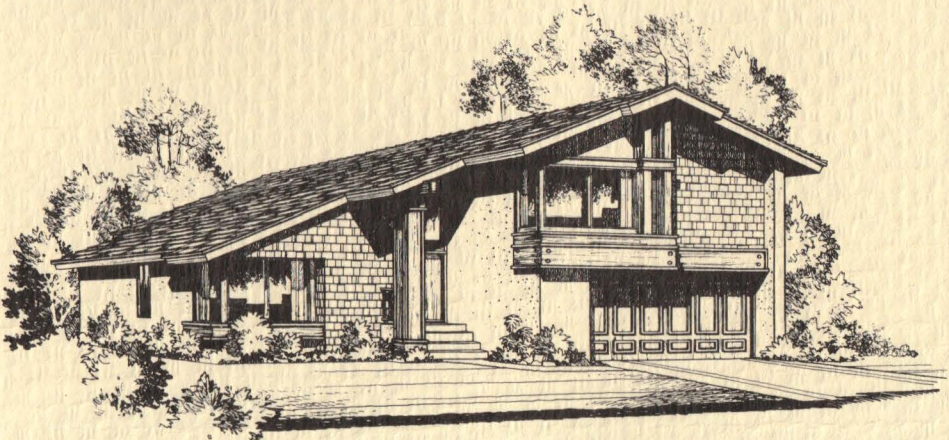
A



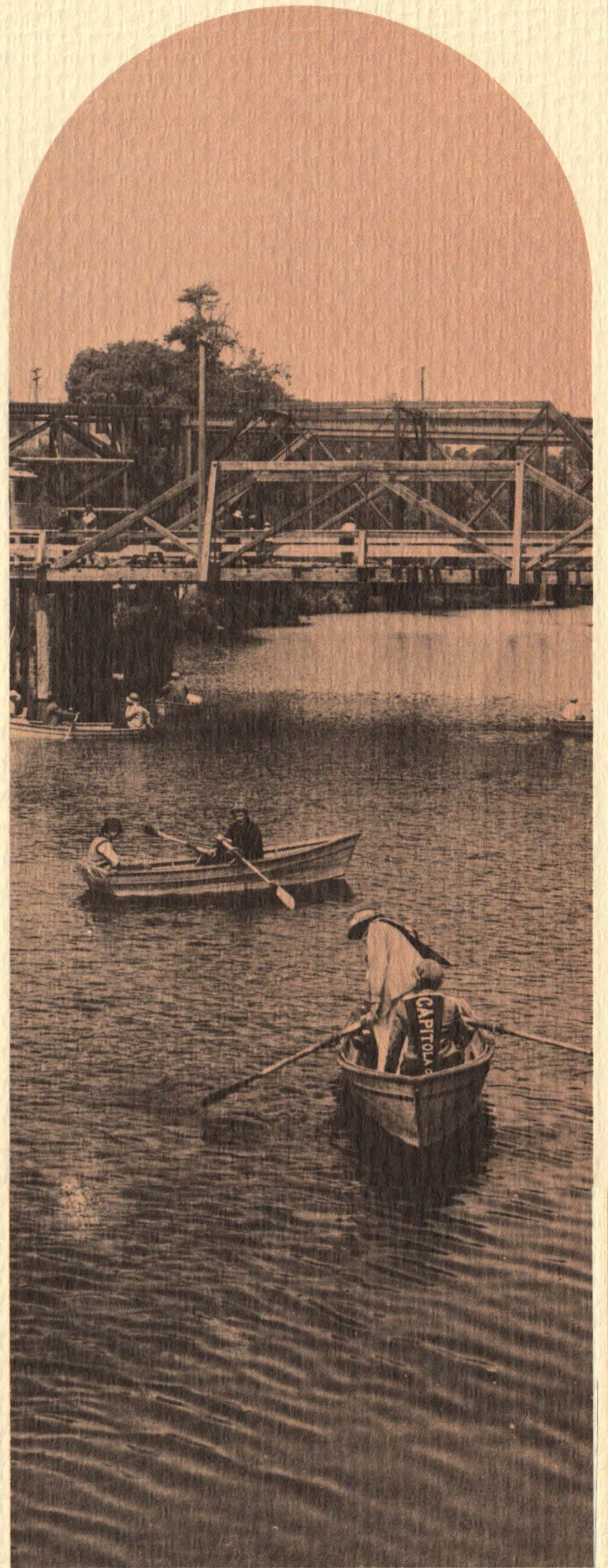
B



C



D





PONDEROSA HOMES