

# LODGELODGE HOMES

 **Pardee**

Weyerhaeuser Pardee Construction Company



5851 Fieldcrest Drive  
Camarillo, California 93010  
(805) 484-4331

Certain models have carpet or flooring not included in the sales price. Our sales price includes carpet and vinyl/asbestos tile only in those areas specifically listed under FEATURES. Decorator items and model landscaping are not included in the purchase price. Our models have been professionally decorated in order to give you ideas as to how each home may be furnished. Items such as wallpaper, custom paint colors, custom carpet and flooring, plants, drapes, mirrors, beams, paintings, wall hangings and furnishings are decorator items and are not included in the sales price.

Various items listed herein are manufactured and supplied by other companies for installation into the homes by Pardee Construction Company. We reserve the right to substitute manufacturers and to make substitutions of color and/or product due to the unavailability of a particular item from a particular manufacturer, or for other reasons. Certain items and products included in our homes are warranted by the individual manufacturers and/or suppliers. Binders containing copies of these warranties are available for inspection, upon request, in our Sales Office.

In the interest of continuous improvement and to meet changing market conditions, we reserve the right to modify, relocate or eliminate any or all of the specifications, plans, utilities, appliances, products and/or exteriors described hereon, and to change the design, size or shape thereof, all without any notice or obligation to any purchaser.

(Renderings are artists' conception.)

R-2/13/80

(Effective with Unit #7-3)

## Features

- Dramatic vaulted ceiling
- Fireplace with gas log-lighter
- Large living room and formal dining area
- Quality shag carpet in living room, dining room, master bedroom and dressing area, and hallway
- Quality vinyl/asbestos tile in entry, kitchen, family room, baths and secondary bedrooms
- Dishwasher
- Gas range with oven and broiler
- Suede-finish laminated plastic kitchen counter tops
- Permanent finish laminated kitchen cabinets
- Double sinks with garbage disposal and chrome faucet
- Kitchens are plumbed for automatic ice-maker refrigerators
- Master and secondary bedrooms include large wardrobe closet
- All baths have pullman cabinet with synthetic marble counter tops
- Exterior walls and ceiling are fully insulated
- Forced air heating
- Smoke detector with warning buzzer
- Weatherstripping on front entry door
- Two-car garage plumbed for laundry, with large storage area
- Front, side and rear yards seeded and one tree planted in front yard (two on corner lots)

## Optional Features

(available at additional cost)

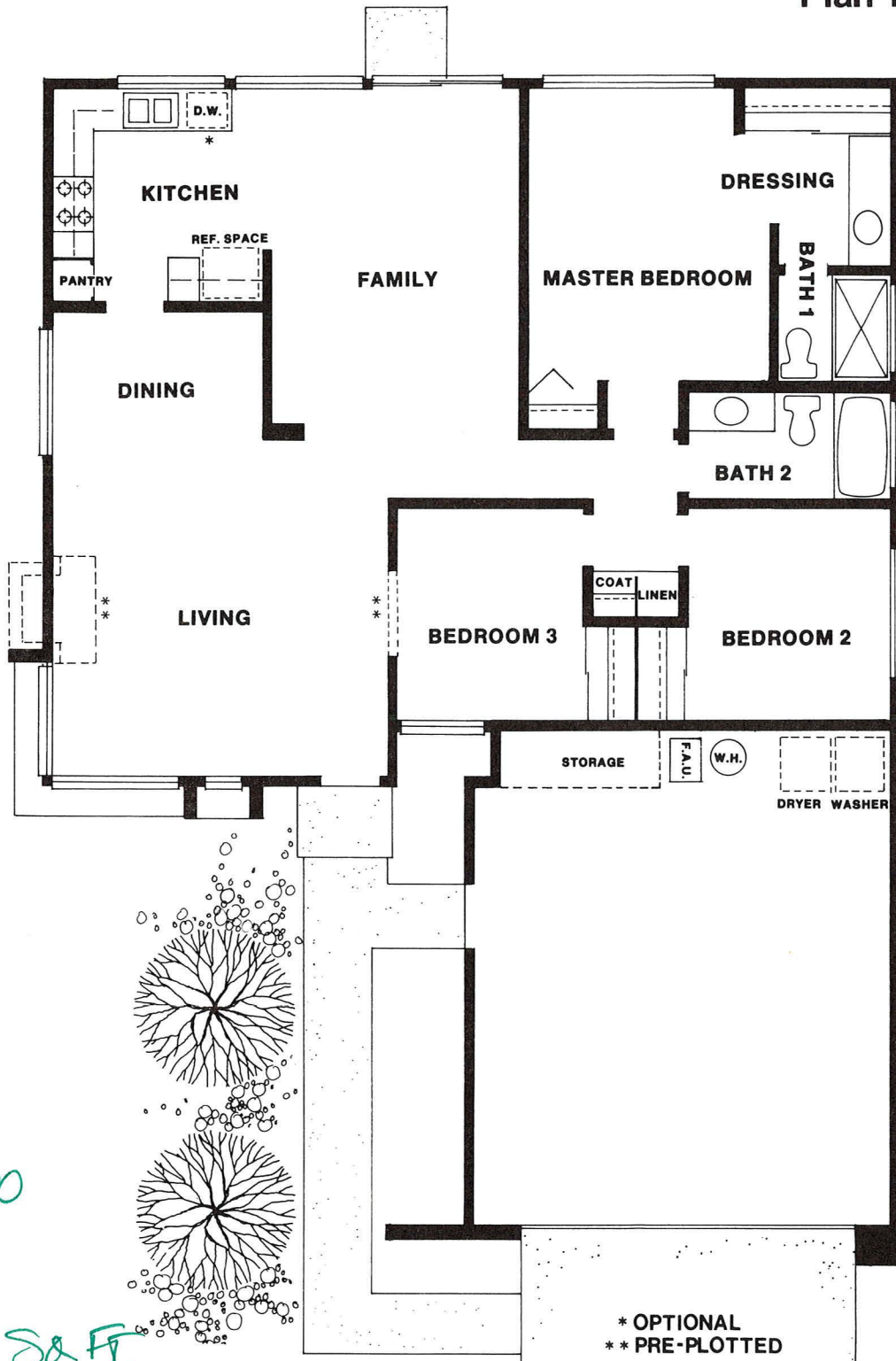
- Air conditioning
- Mirrored wardrobe doors
- Upgrade carpet and pad

## Energy Saving Features

- Dual glazed windows and sliding glass doors
- Climate control clock thermostat
- Controlled attic ventilator
- Pilotless ignition range and oven
- Water saver plumbing innovations
- Fire resistant fiberglass ducting



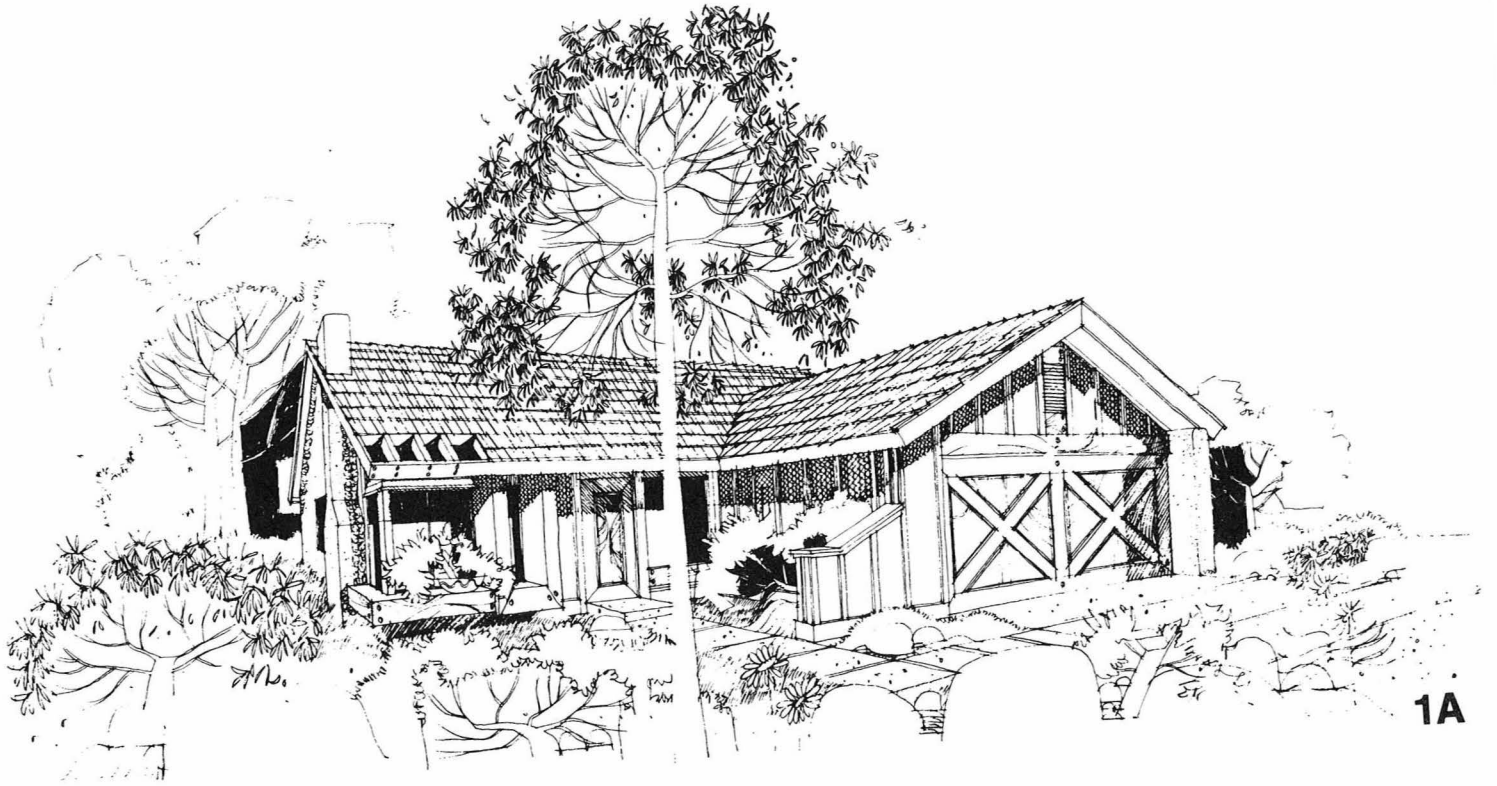
Plan 1



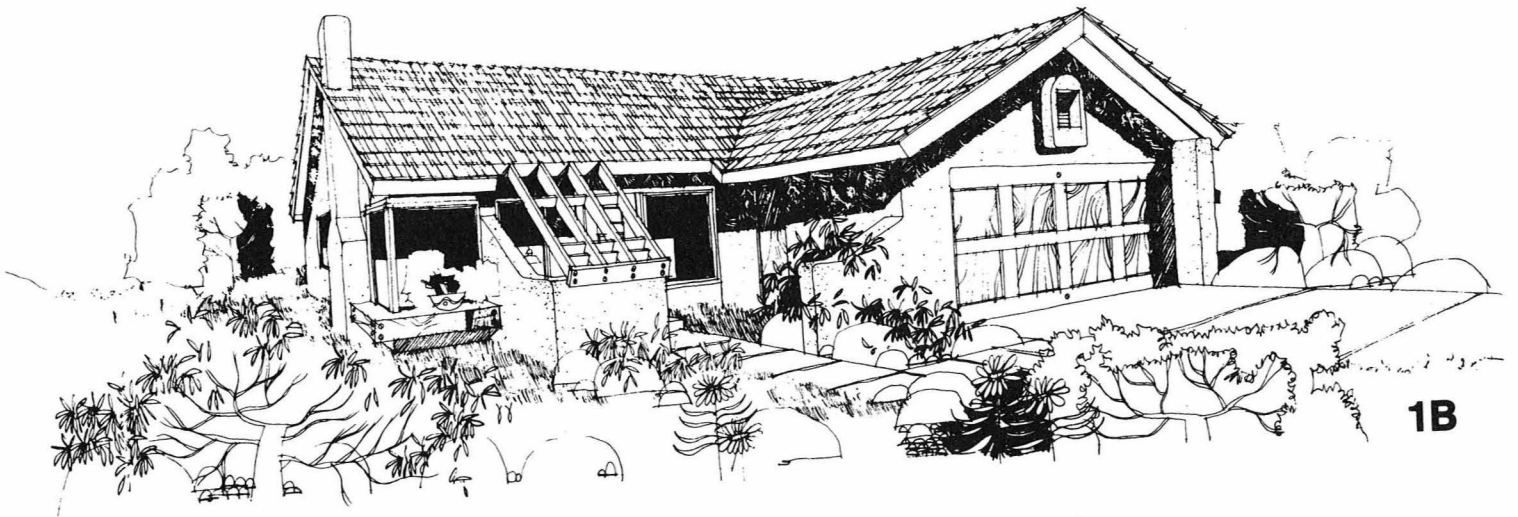
\$109,150

1280 SQ. FT.

\* OPTIONAL  
\*\* PRE-PLOTTED



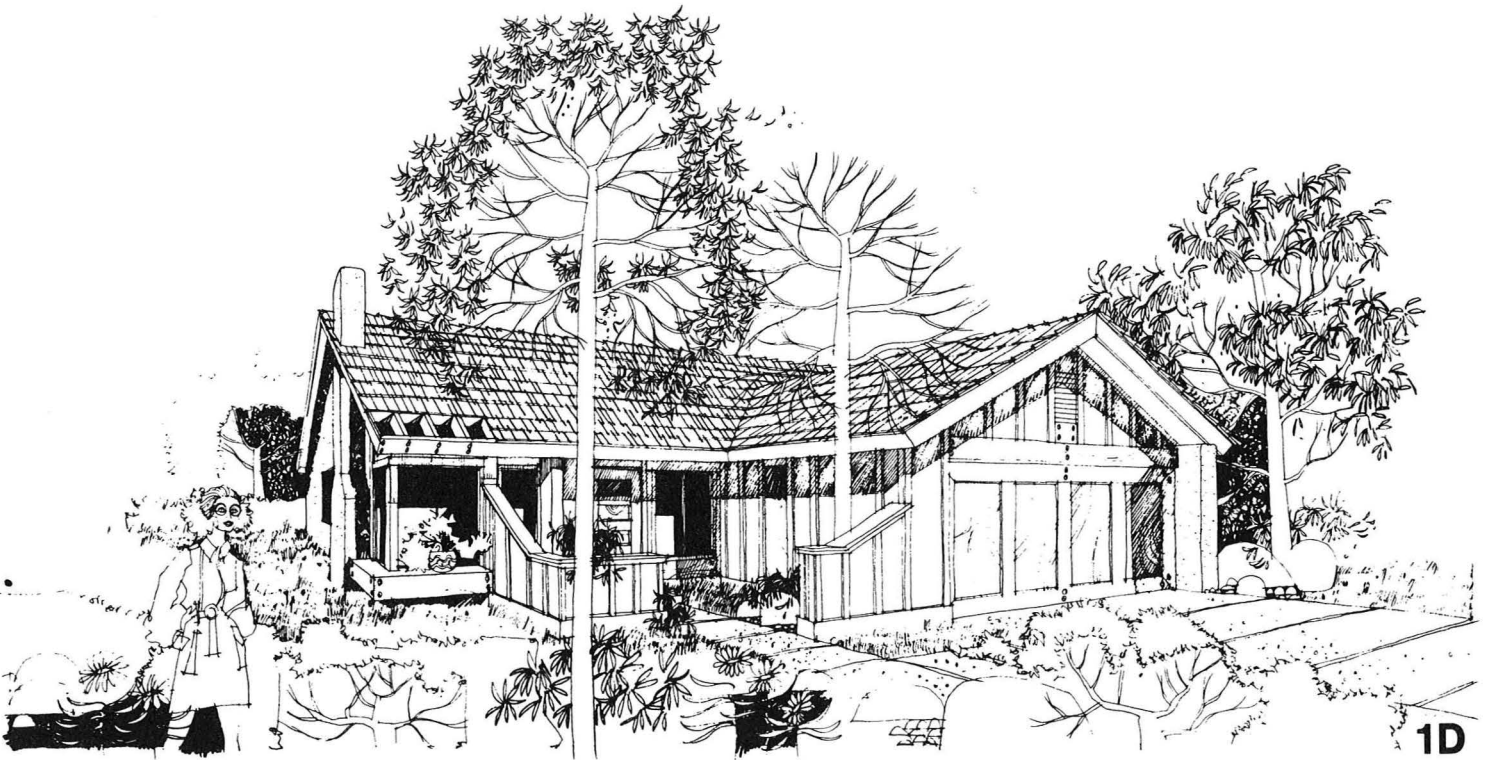
1A



1B

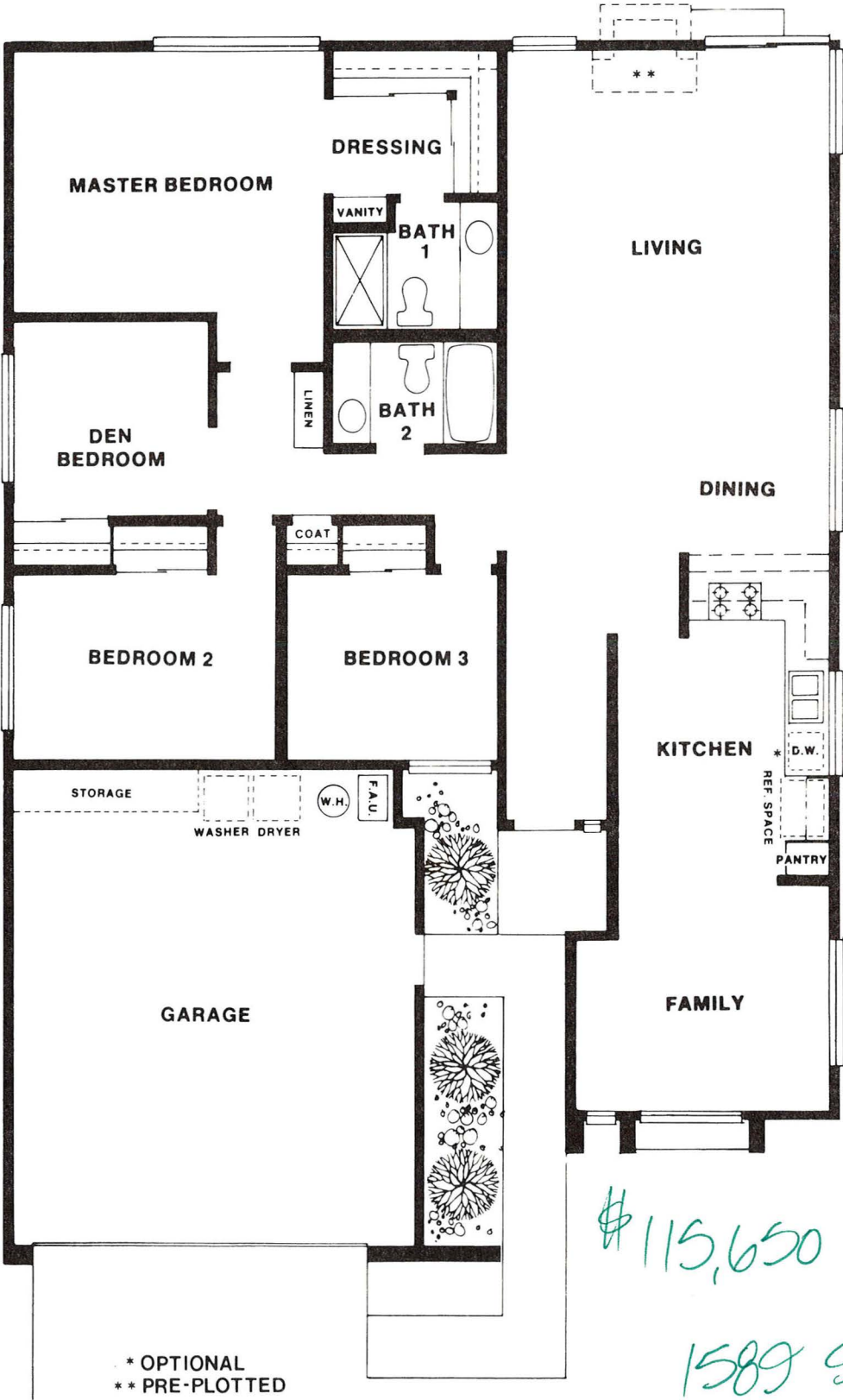


1C



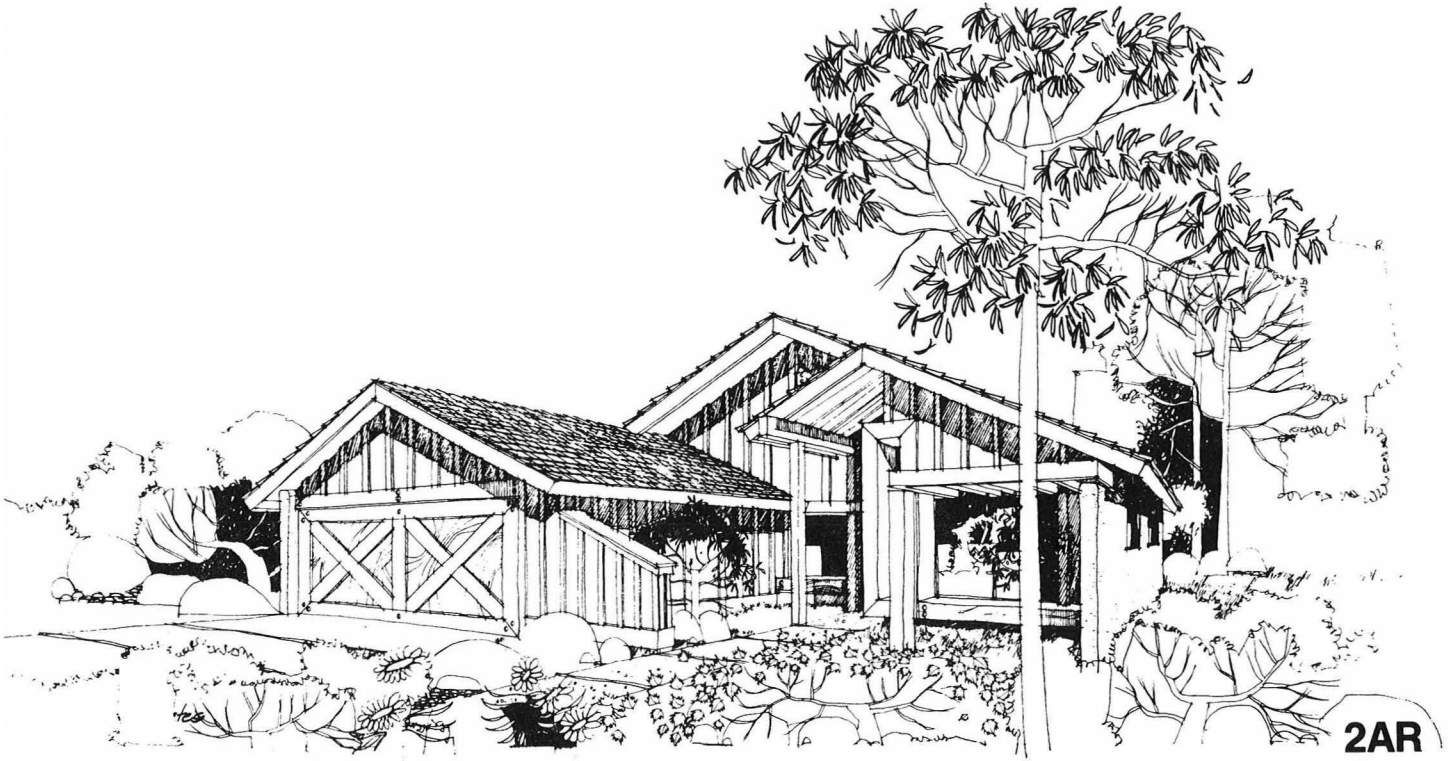
1D

Plan 2R

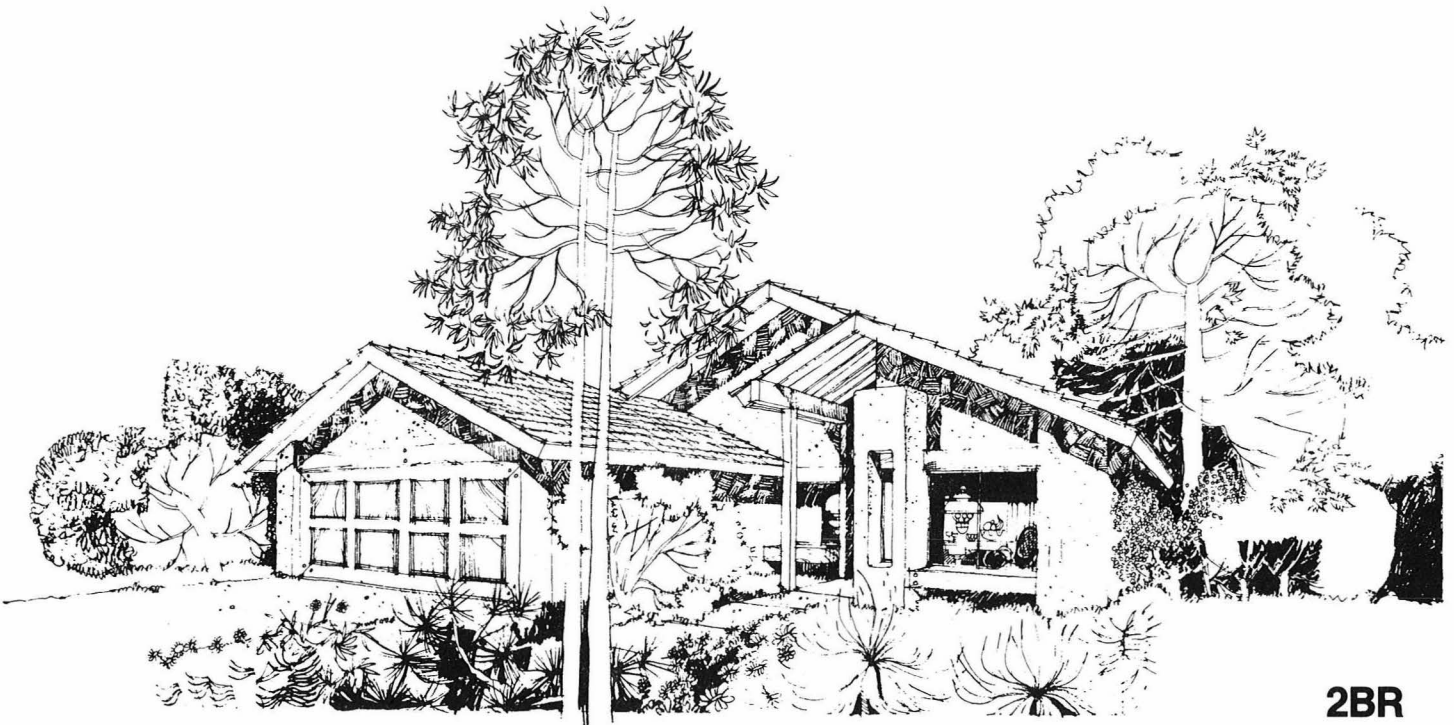


\$115,650

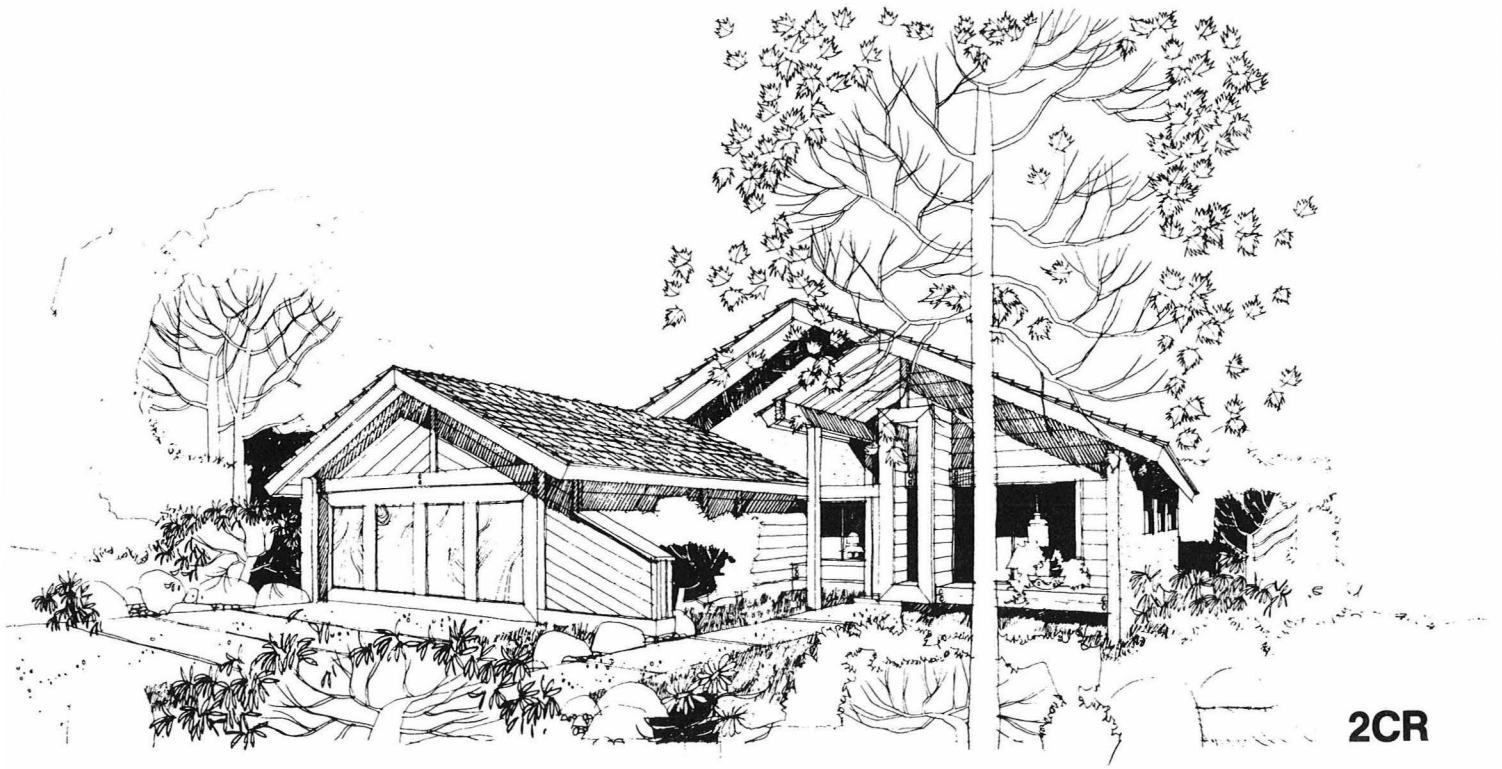
1589 SQ FT.



2AR



2BR



2CR



2DR