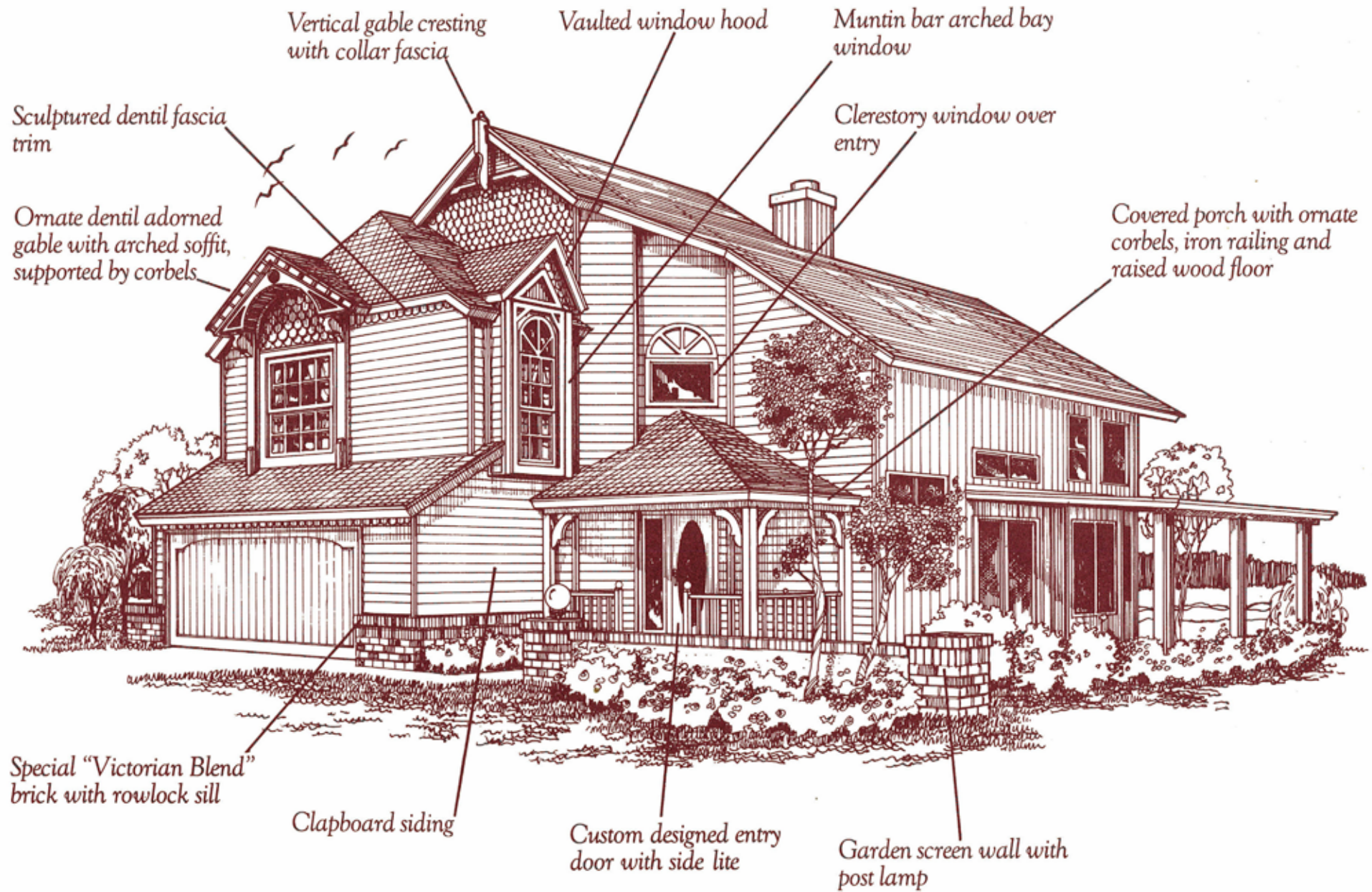
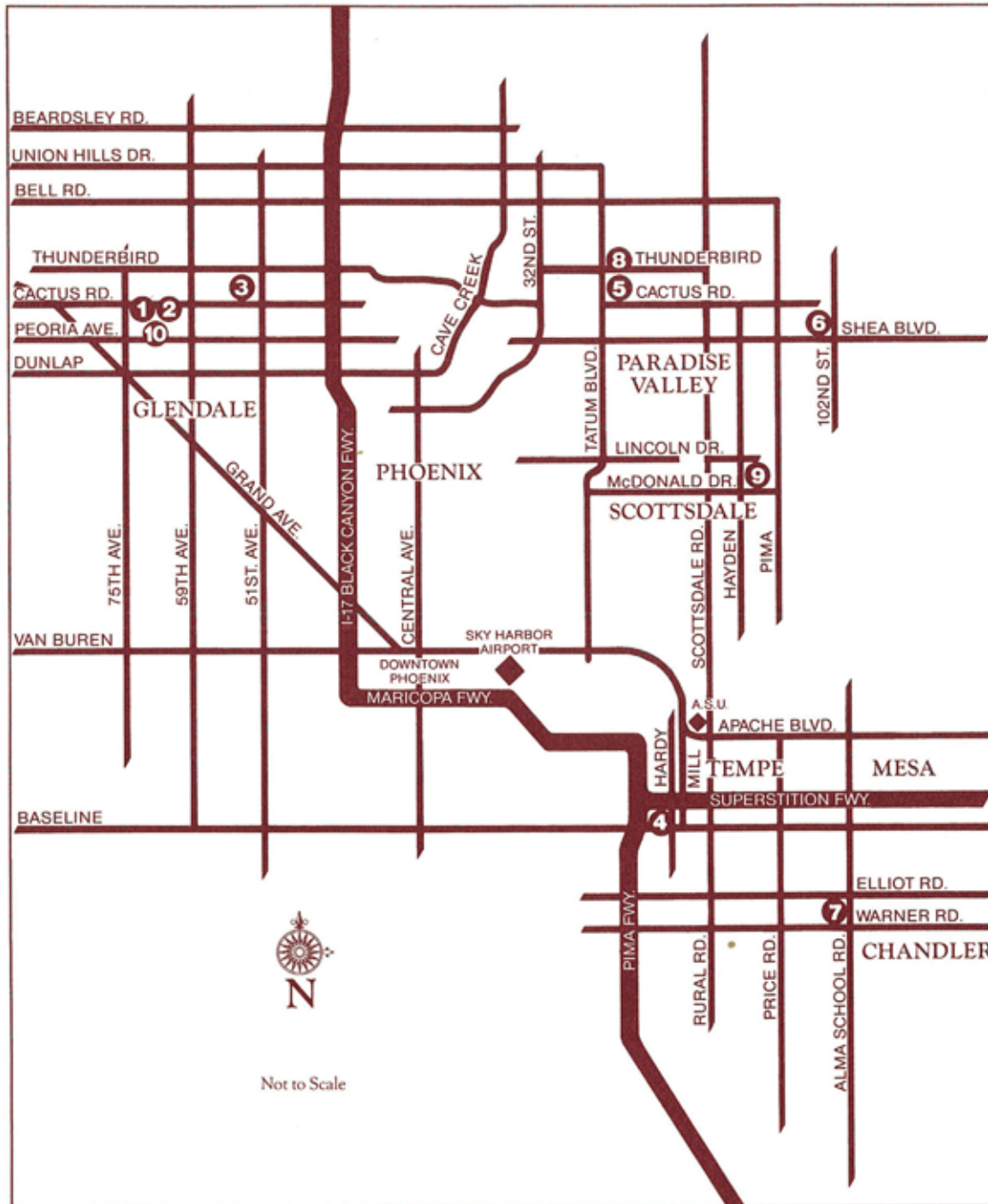


# VICTORIAN CLASSICS VOCABULARY



**Coventry. The Pride of Ownership.**

# Visit Coventry Homes in your favorite valley location.



① **HICKORY SHADOWS**  
65th Avenue & Cactus  
From the 90's  
979-0313  
*Recorded as Westbluff*

② **BRISTOL SQUARE**  
64th Avenue & Cactus  
From the 70's  
979-3434  
*Recorded as Westridge*

③ **TRAILSIDE**  
51st Avenue, north of Cactus  
From the 50's  
843-3052  
*Recorded as Thunderbird Palms 1 & 3*

④ **SOUTH PORTE**  
Baseline, west of Hardy  
From the 50's  
838-3588  
*Recorded as Southern Palms #4*

⑤ **COBBLESTONE SQUARE**  
Tatum, north of Cactus  
From the 90's  
996-3593  
*Recorded as Royal Estates East*

⑥ **BENT TREE**  
102nd Street, north of Shea  
From the 100's  
996-3593

*Coming Soon:*  
⑦ **BRIGHTON PLACE**  
Alma School, south of Elliot  
*Recorded as Dobson Estates III*

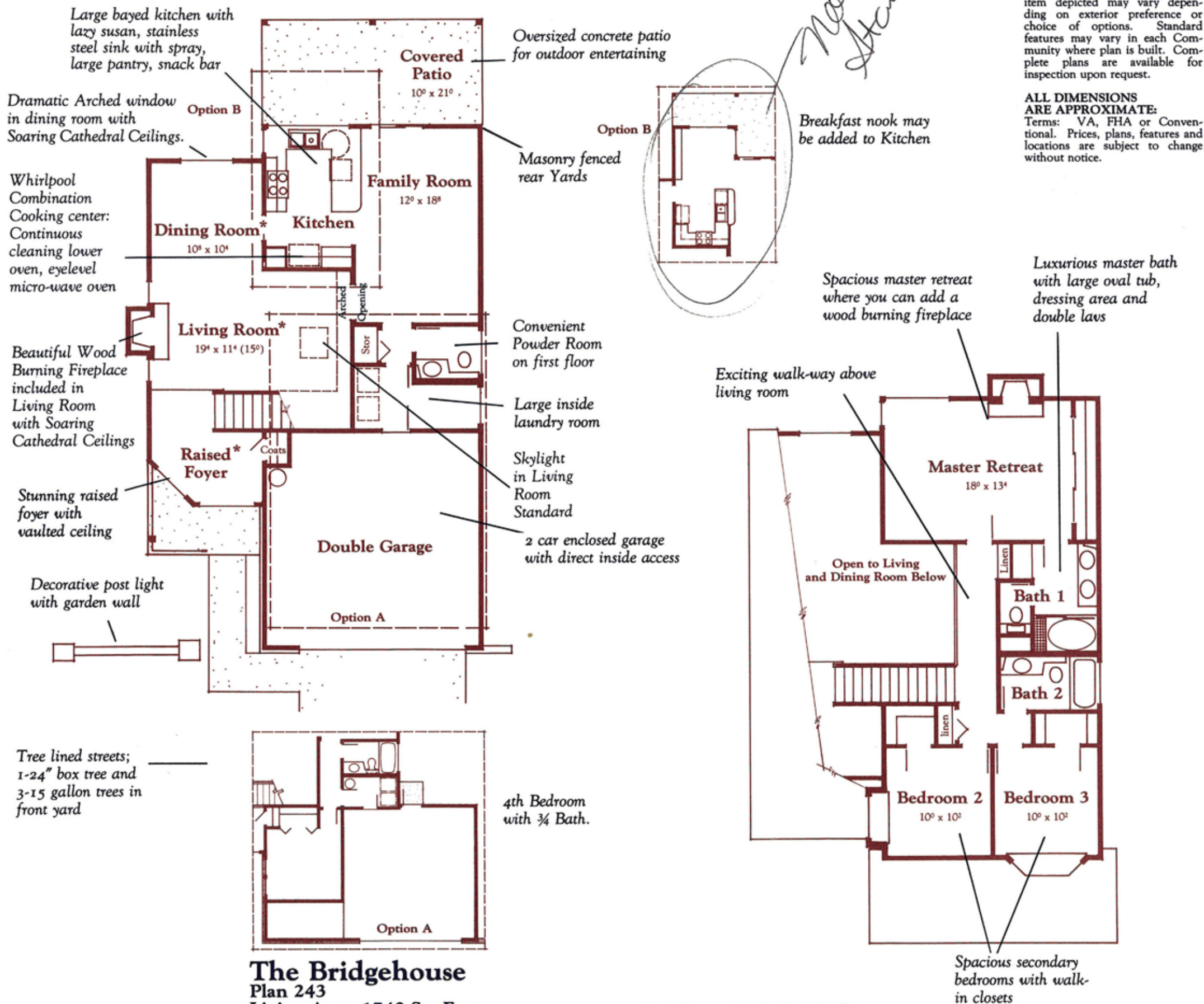
*Coming Soon:*  
⑧ **HYDE PARK**  
Tatum, north of Thunderbird  
*Recorded as Liberty Square*

*Coming Soon:*  
⑨ **WINDEMERE**  
Hayden north of McDonald  
*Recorded as Hayden Estates*

*Coming Soon:*  
⑩ **MONTARA**  
63rd Avenue & Peoria

## Coventry. The Pride of Ownership.

# Coventry Homes



**The Bridgehouse**  
Plan 243  
Living Area: 1740 Sq. Feet  
Living area increases with addition of 4th bedroom and nook

\* Indicates Cathedral Ceiling

---

# Coventry Homes

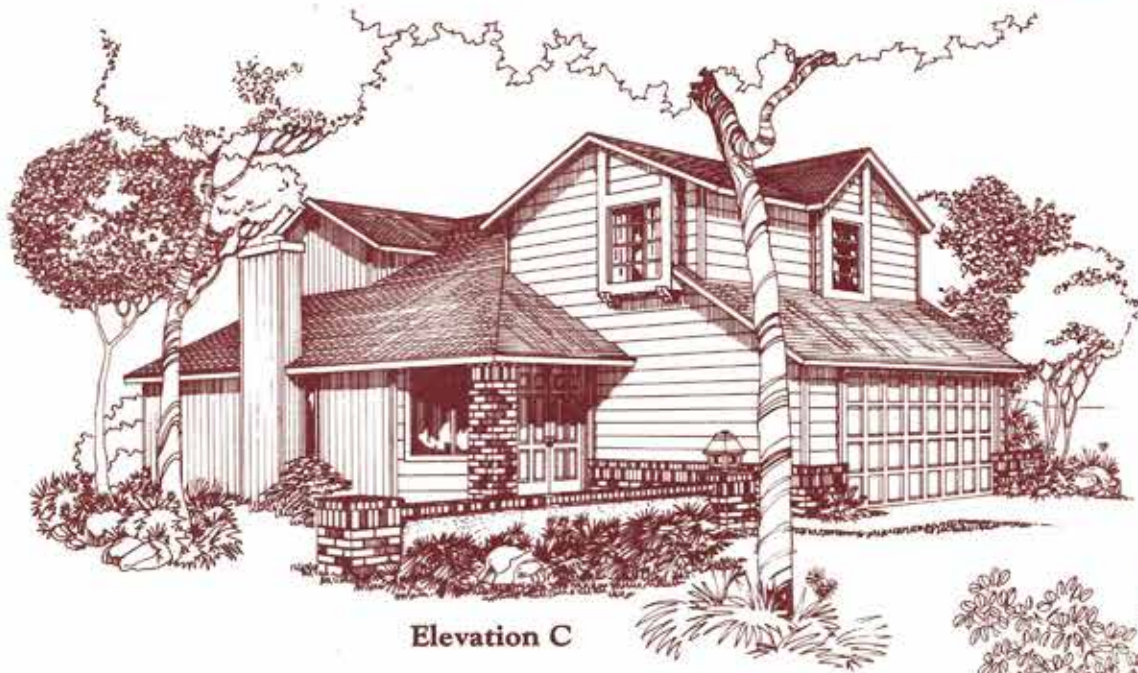
---



Elevation A



Elevation B



Elevation C



Elevation D





Elevation A



Elevation B



Elevation C



Elevation D

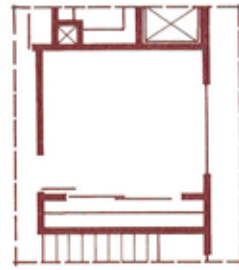


Elevation E

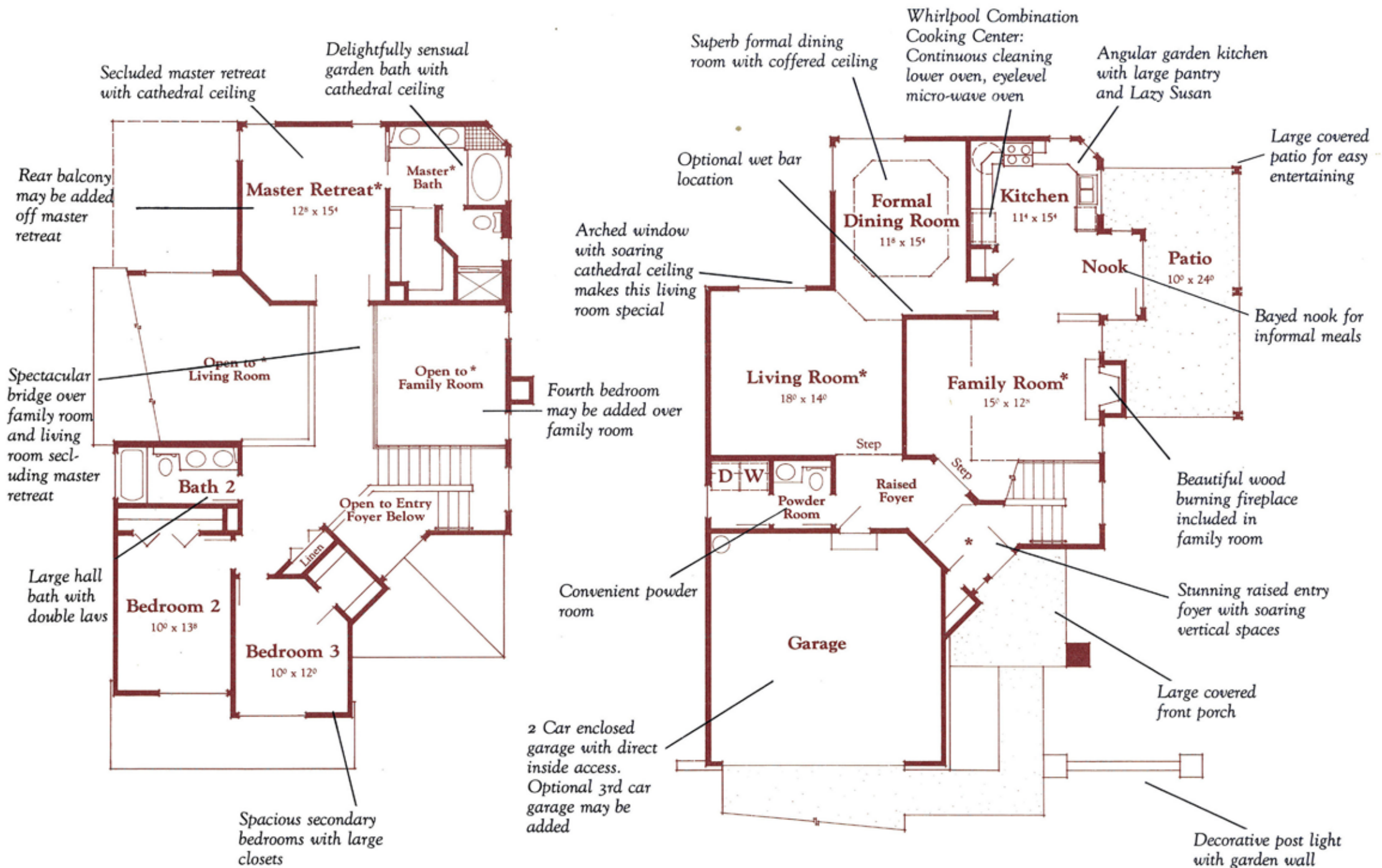
# COVENTRY

**PLEASE NOTE:**  
This floor plan and its exterior design (opposite side) are only artist renderings. Location, size, existence of doors, windows, walls, fireplaces and any other item depicted may vary depending on exterior preference or choice of options. Standard features may vary in each Community where plan is built. Complete plans are available for inspection upon request.

**ALL DIMENSIONS ARE APPROXIMATE:**  
Terms: VA, FHA or Conventional. Prices, plans, features and locations are subject to change without notice.



Fourth bedroom may be added above Family Room



## The Spirehouse

Plan 253

Living Area: 2083 Sq. Feet

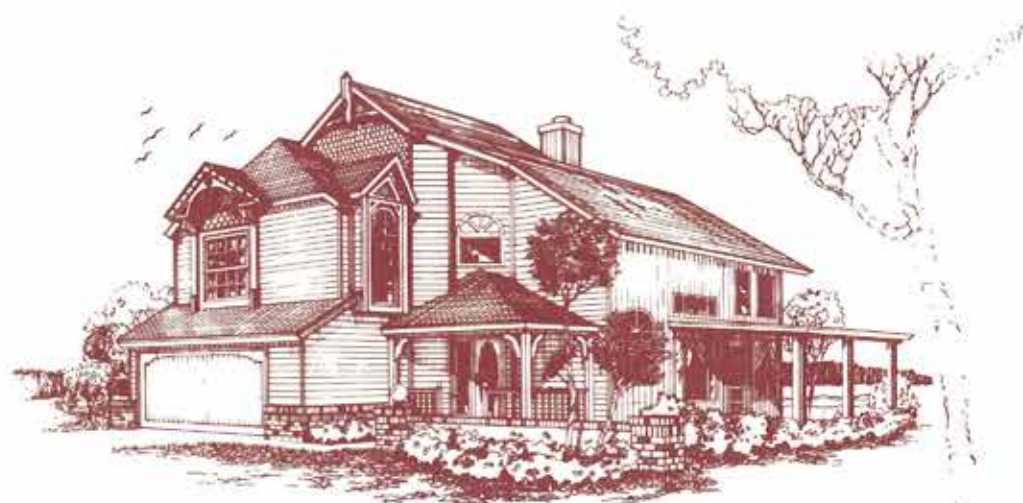
Living Area w/optional 4th bedroom: 2231

\* Vaulted Ceiling

Tree lined streets: 1 - 24" box tree and 3 - 15 gallon trees in front yard



Elevation B



Elevation C



Elevation D



Elevation E



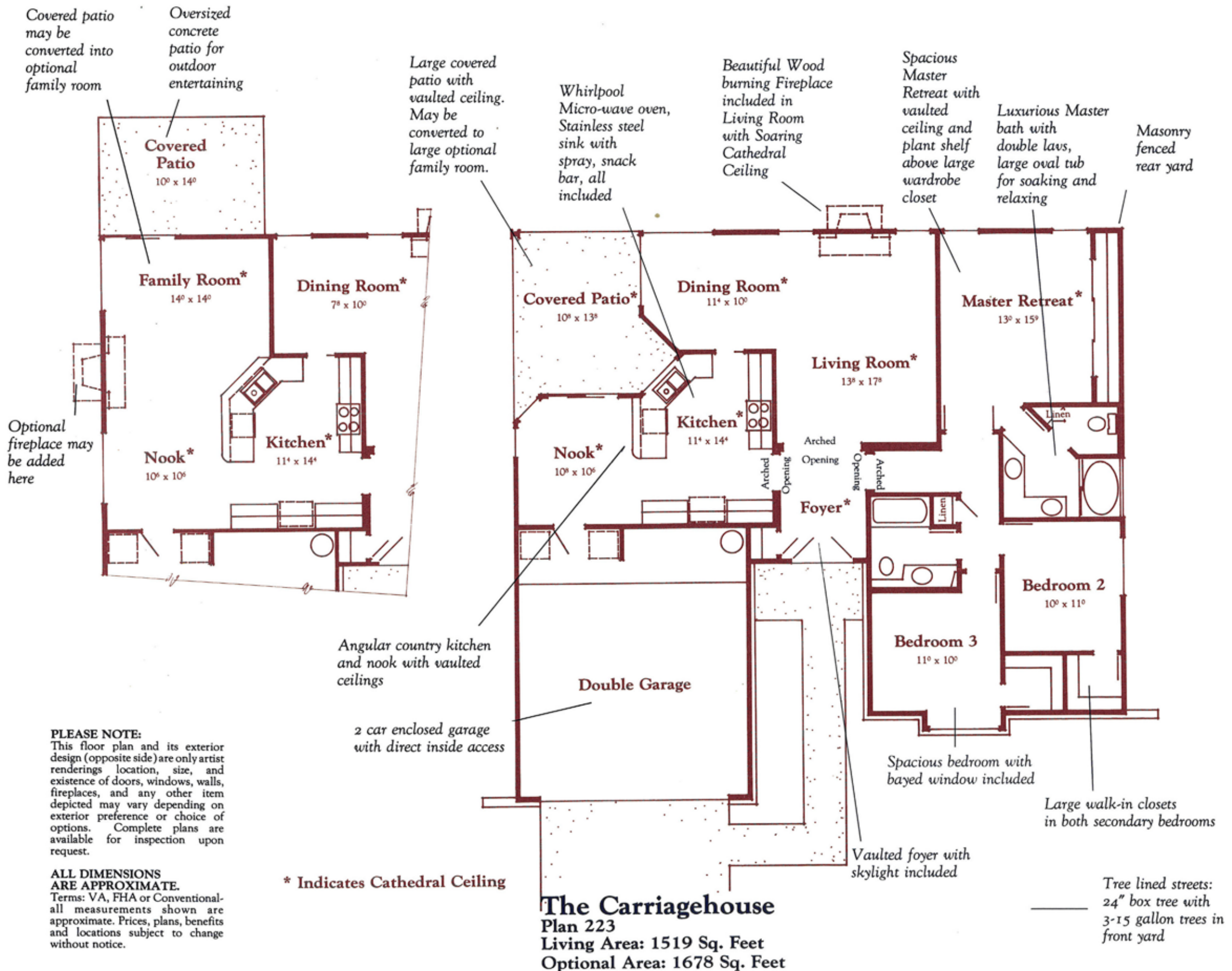
Elevation F



Elevation G



# Coventry Homes



---

---

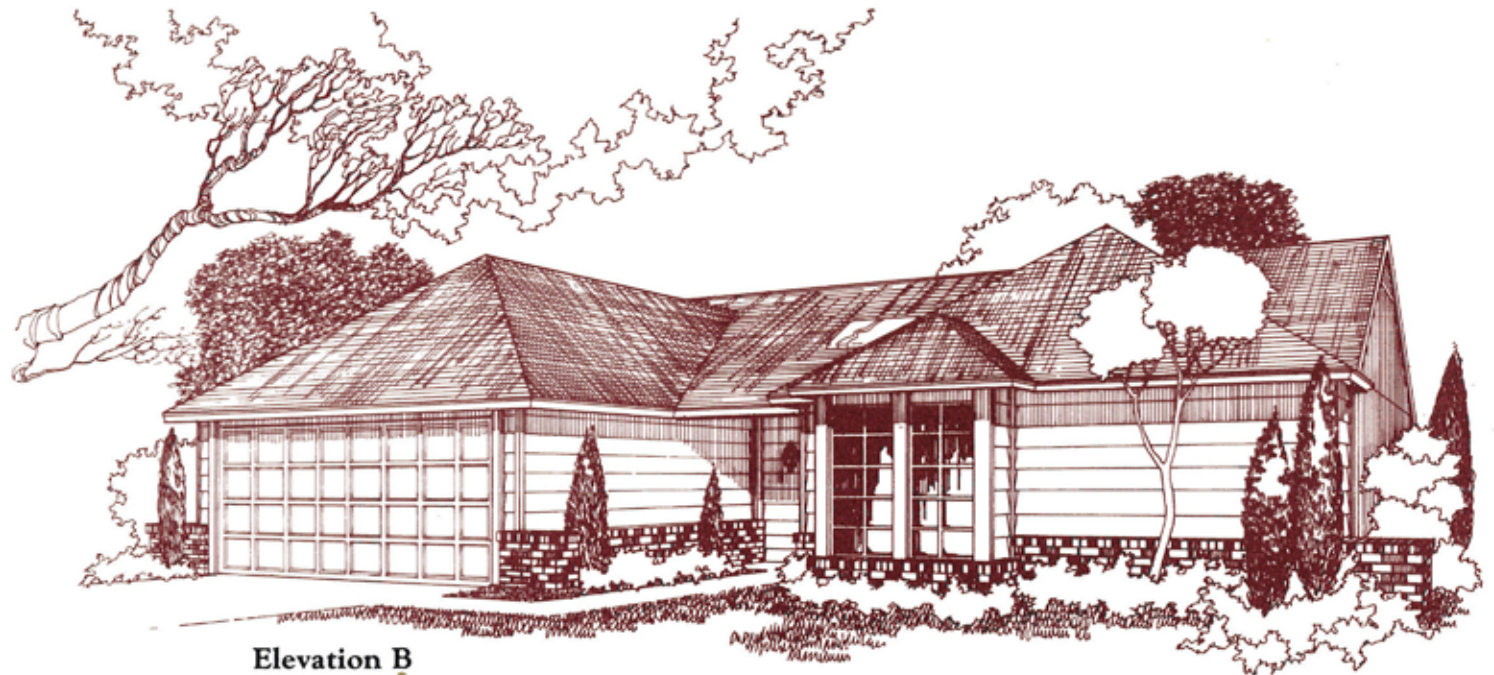
# Coventry Homes

---

---



Elevation A



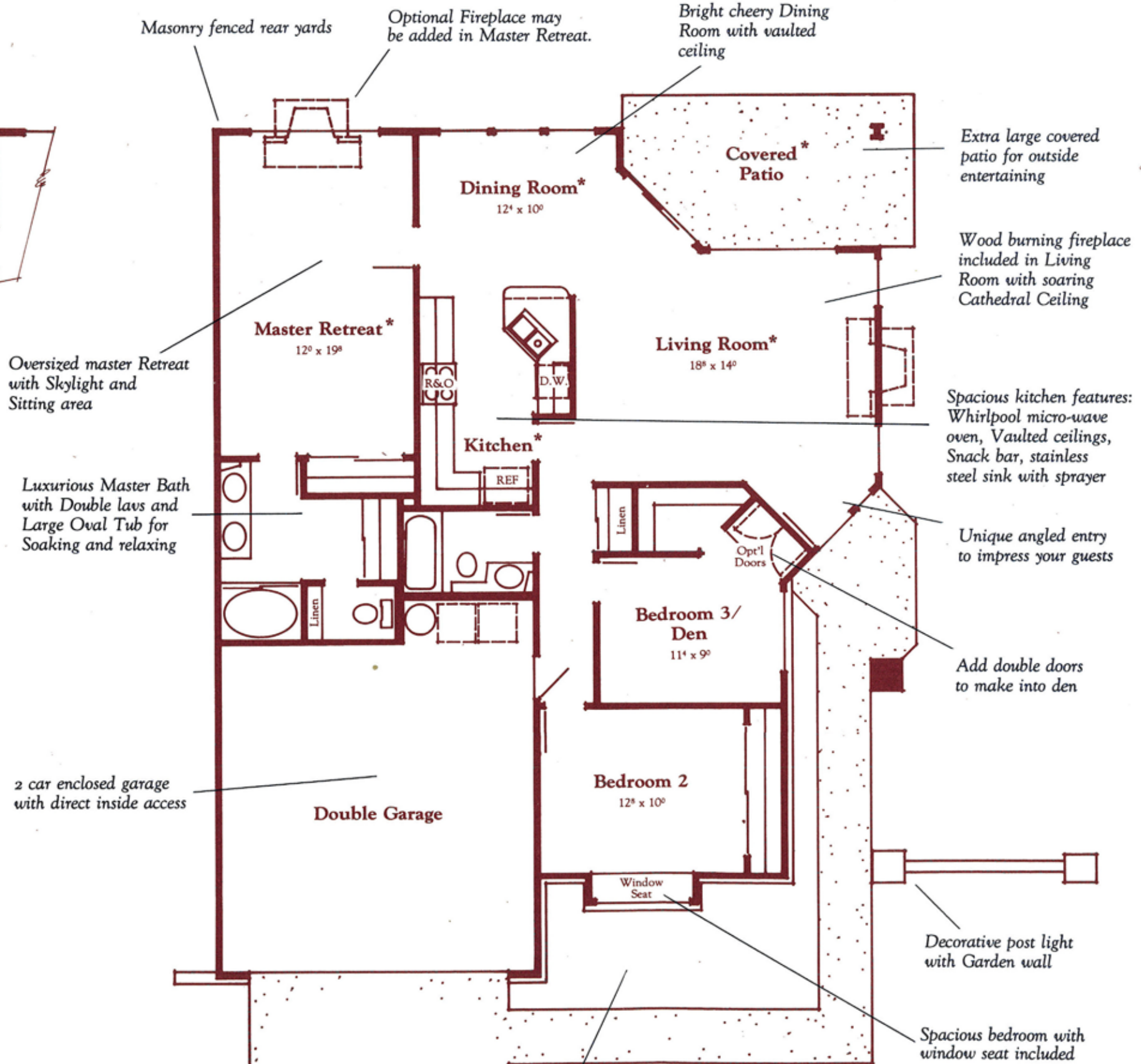
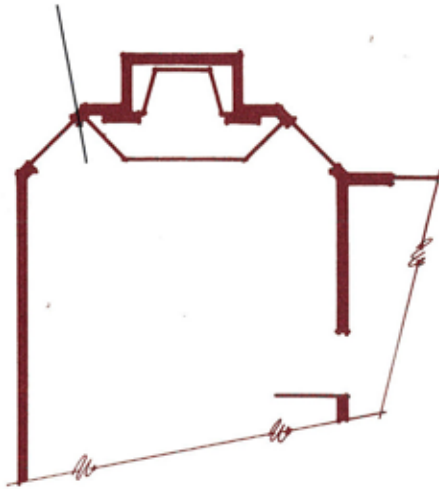
Elevation B



Elevation C

# Coventry Homes

Bay window and Fireplace may be added in Master Retreat for ultimate luxury



Oversized master Retreat with Skylight and Sitting area

Luxurious Master Bath with Double lavs and Large Oval Tub for Soaking and relaxing

2 car enclosed garage with direct inside access

**PLEASE NOTE:**  
This floor plan and its exterior design (opposite side) are only artist renderings location, size, and existence of doors, windows, walls, fireplaces, and any other item depicted may vary depending on exterior preference or choice of options. Complete plans are available for inspection upon request.

**ALL DIMENSIONS ARE APPROXIMATE.**  
Terms: VA, FHA or Conventional- all measurements shown are approximate. Prices, plans, benefits and locations subject to change without notice.

**The Millhouse**  
**Plan 203**  
**Living Area: 1362 Sq. Feet**

Tree Lined Streets:  
1-24" box Tree with  
3-15 gallon trees in  
front yard

\* Indicates Cathedral Ceiling

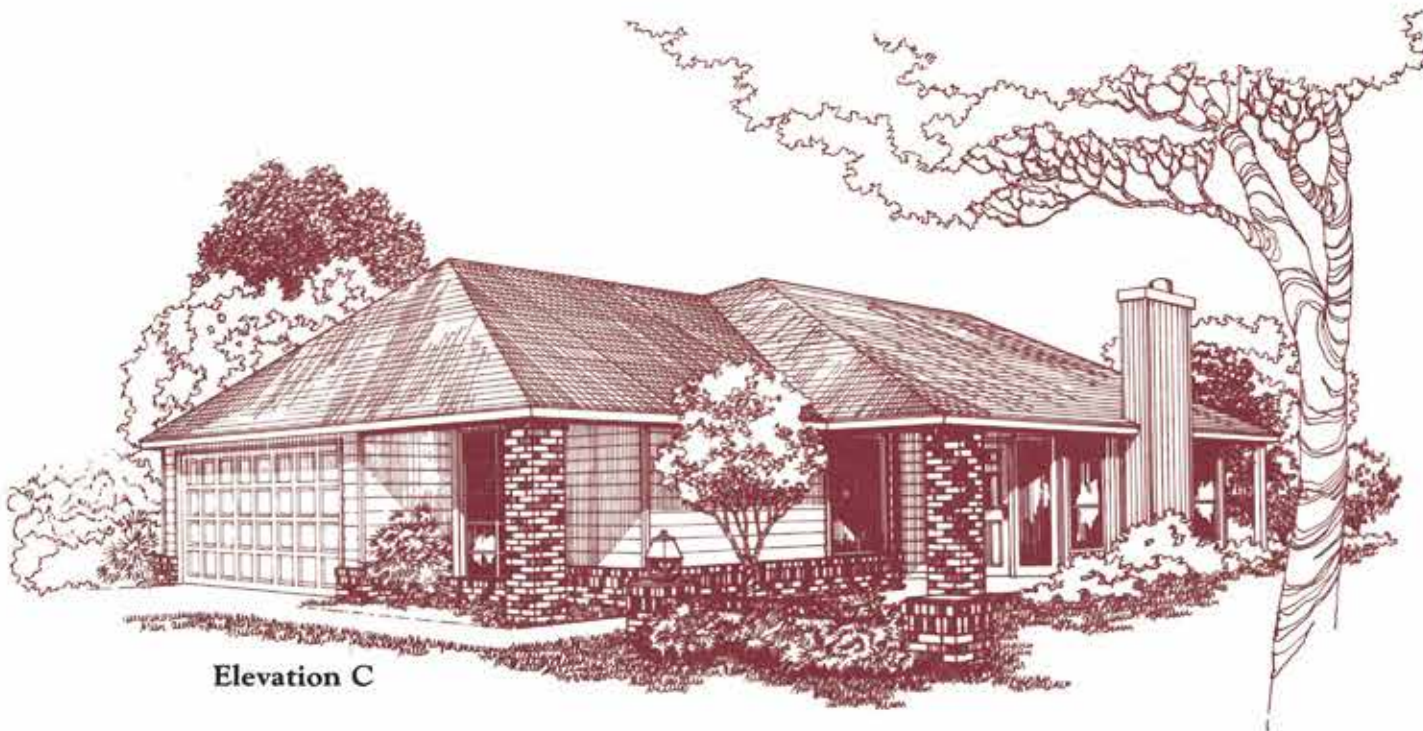
# Coventry Homes



Elevation A



Elevation B



Elevation C

---

---

# Coventry Homes

---

---

## Victorian Classic

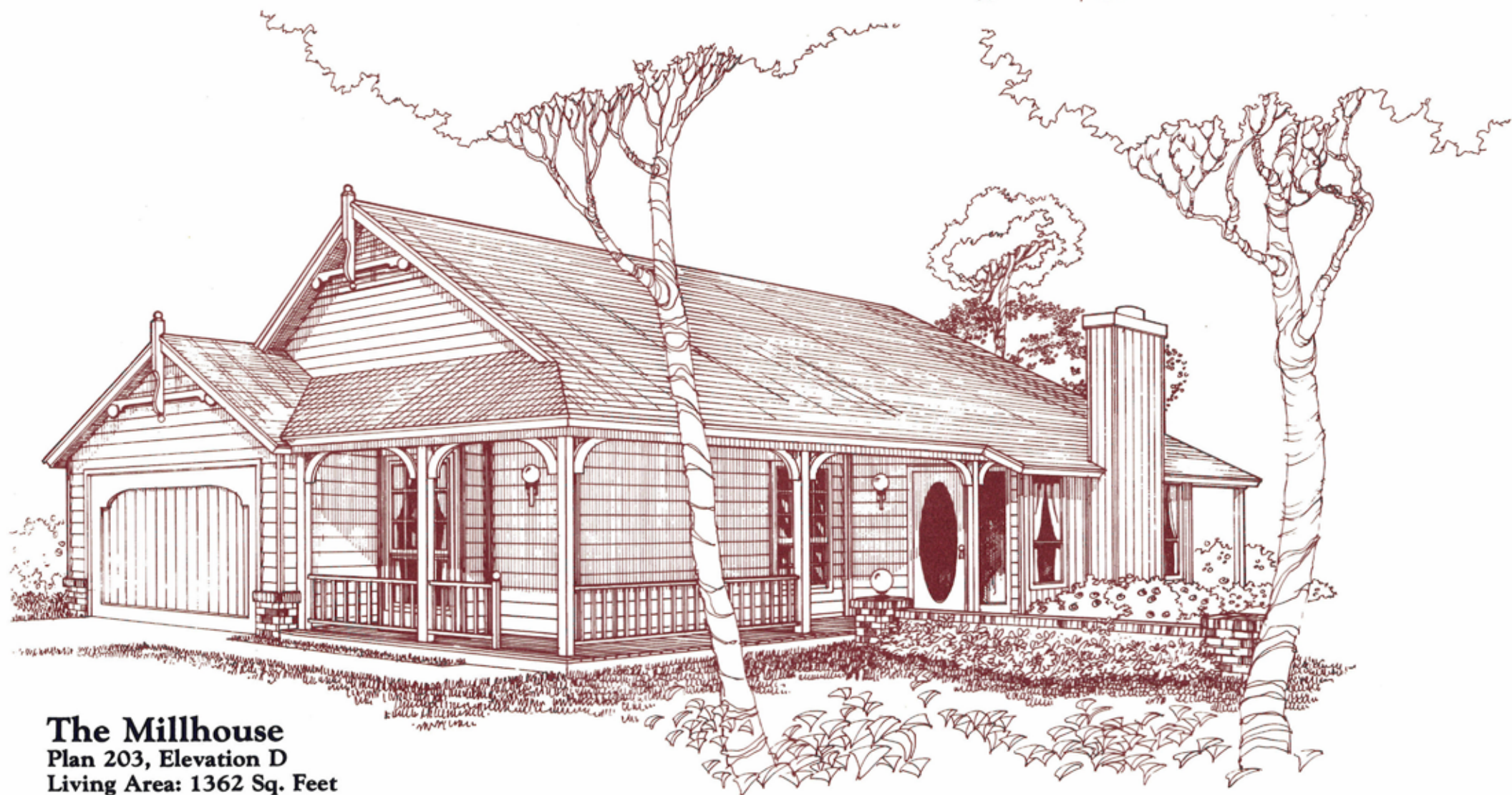


**The Bridgehouse**  
Plan 243, Elevation D  
Living Area: 1740 Sq. Feet

# Coventry Homes



**The Carriagehouse**  
Plan 223, Elevation D  
Living Area: 1519 Sq. Feet



**The Millhouse**  
Plan 203, Elevation D  
Living Area: 1362 Sq. Feet