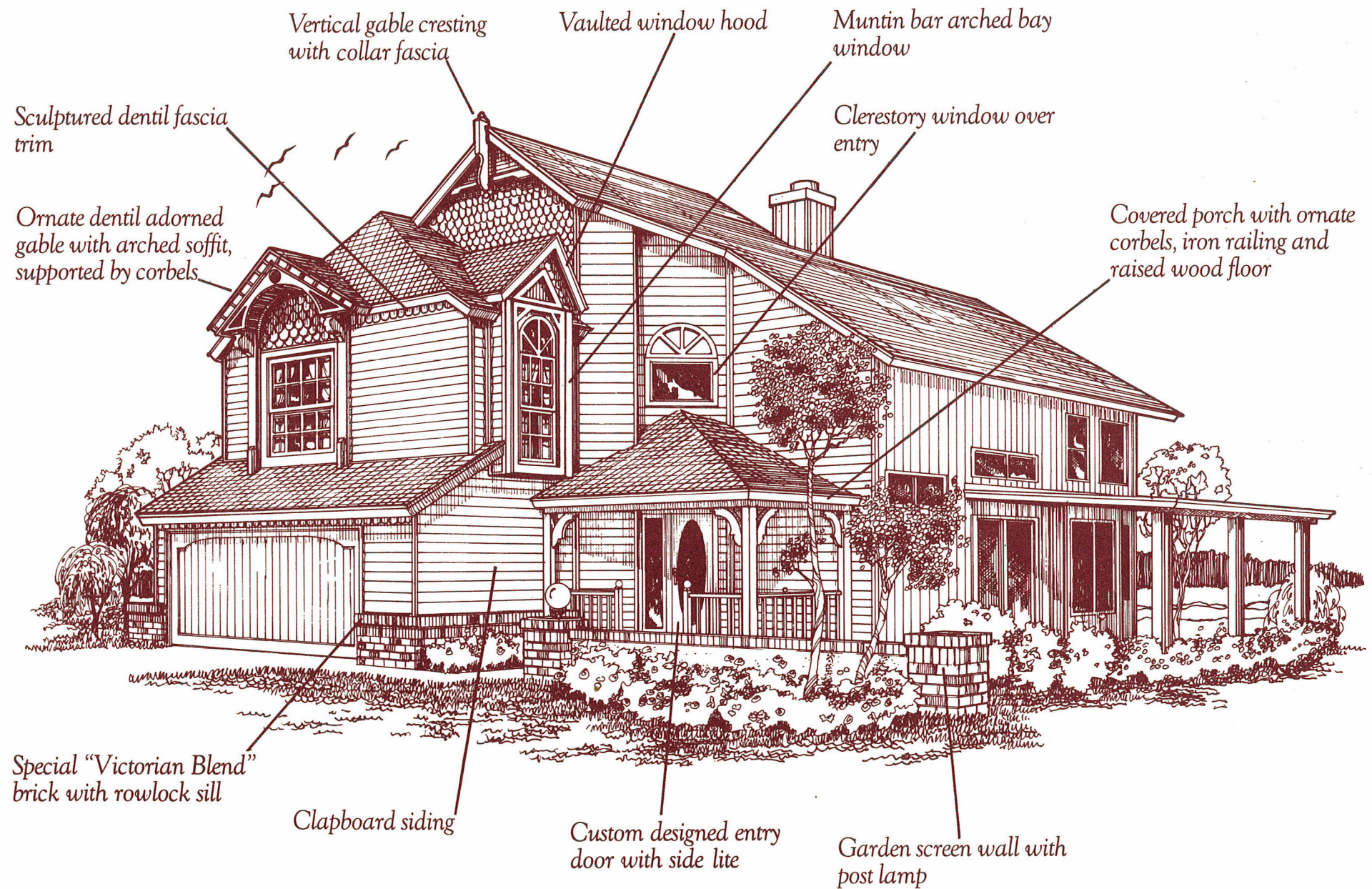
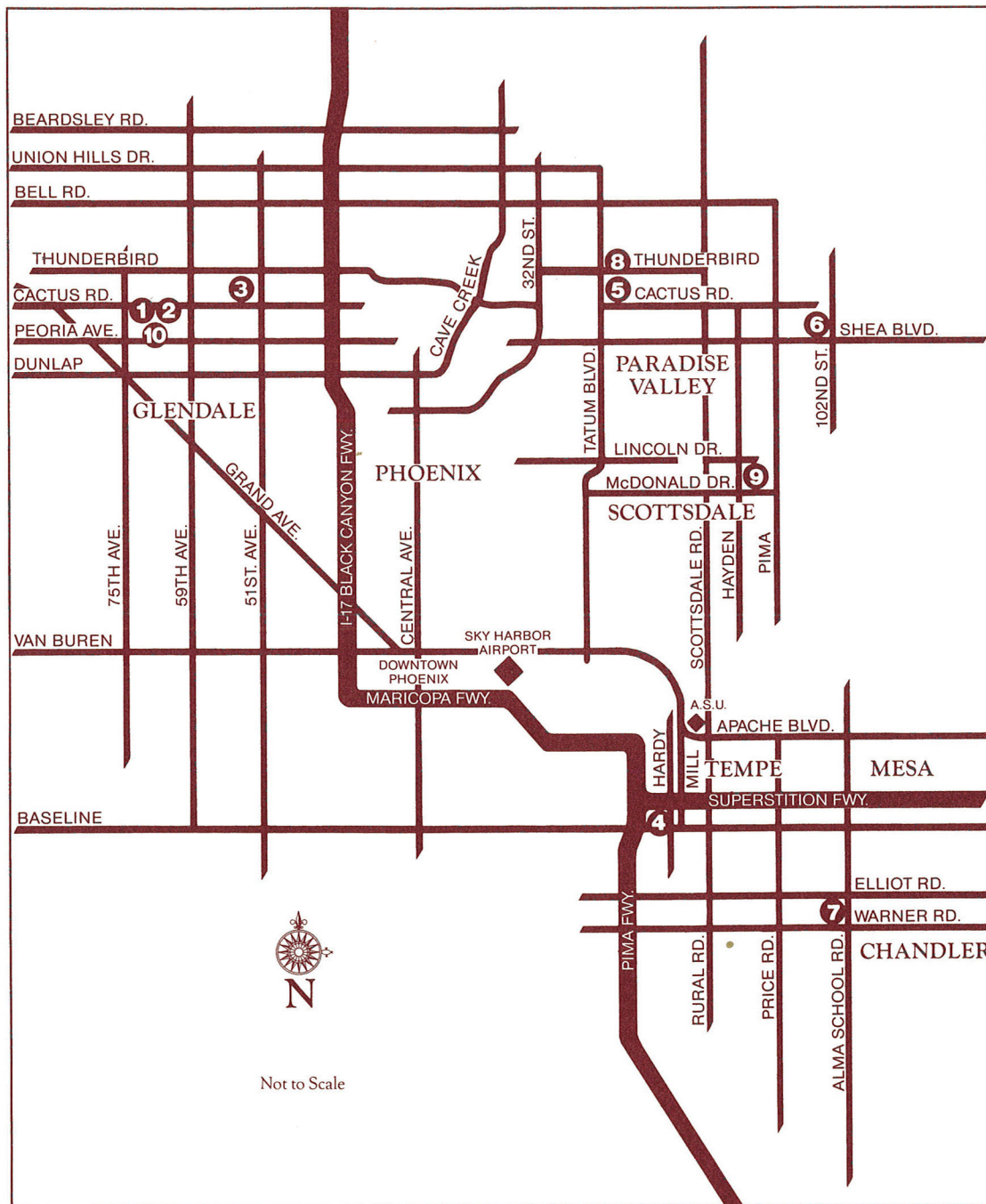


VICTORIAN CLASSICS VOCABULARY



Coventry. The Pride of Ownership.

Visit Coventry Homes in your favorite valley location.



① **HICKORY SHADOWS**

65th Avenue & Cactus
From the 90's
979-0313

Recorded as Westbluff

② **BRISTOL SQUARE**

64th Avenue & Cactus
From the 70's
979-3434

Recorded as Westridge

③ **TRAILSIDE**

51st Avenue, north of Cactus
From the 50's
843-3052

Recorded as Thunderbird Palms 1 & 3

④ **SOUTH PORTE**

Baseline, west of Hardy
From the 50's
838-3588

Recorded as Southern Palms #4

⑤ **COBBLESTONE SQUARE**

Tatum, north of Cactus
From the 90's
996-3593

Recorded as Royal Estates East

⑥ **BENT TREE**

102nd Street, north of Shea
From the 100's
996-3593

Coming Soon:

⑦ **BRIGHTON PLACE**

Alma School, south of Elliot
Recorded as Dobson Estates III

Coming Soon:

⑧ **HYDE PARK**

Tatum, north of Thunderbird
Recorded as Liberty Square

Coming Soon:

⑨ **WINDEMERE**

Hayden north of McDonald
Recorded as Hayden Estates

Coming Soon:

⑩ **MONTARA**

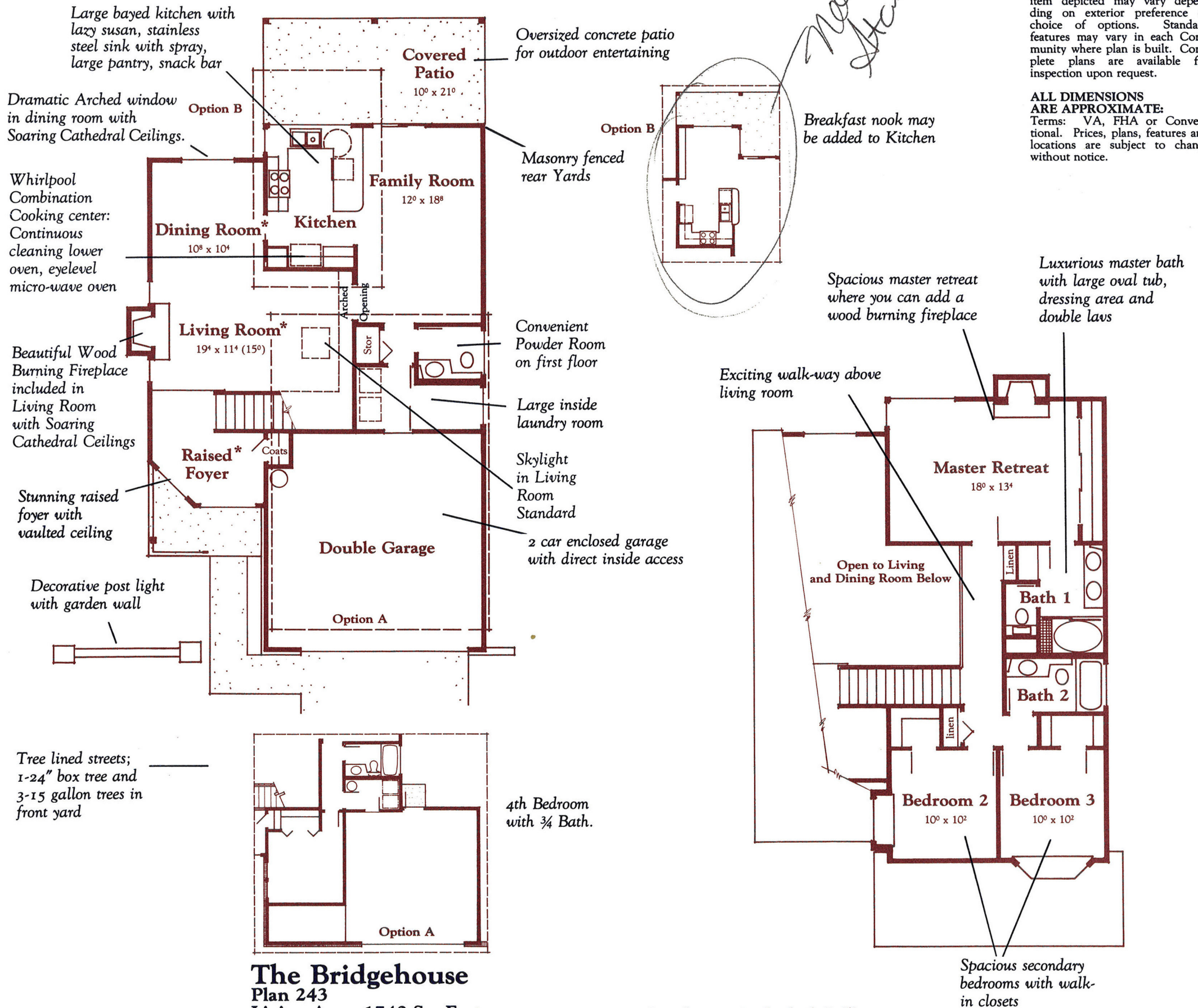
63rd Avenue & Peoria

Coventry. The Pride of Ownership.

Coventry Homes

PLEASE NOTE:
This floor plan and its exterior design (opposite side) are only artist renderings. Location, size, existence of doors, windows, walls, fireplaces and any other item depicted may vary depending on exterior preference or choice of options. Standard features may vary in each Community where plan is built. Complete plans are available for inspection upon request.

ALL DIMENSIONS ARE APPROXIMATE:
Terms: VA, FHA or Conventional. Prices, plans, features and locations are subject to change without notice.



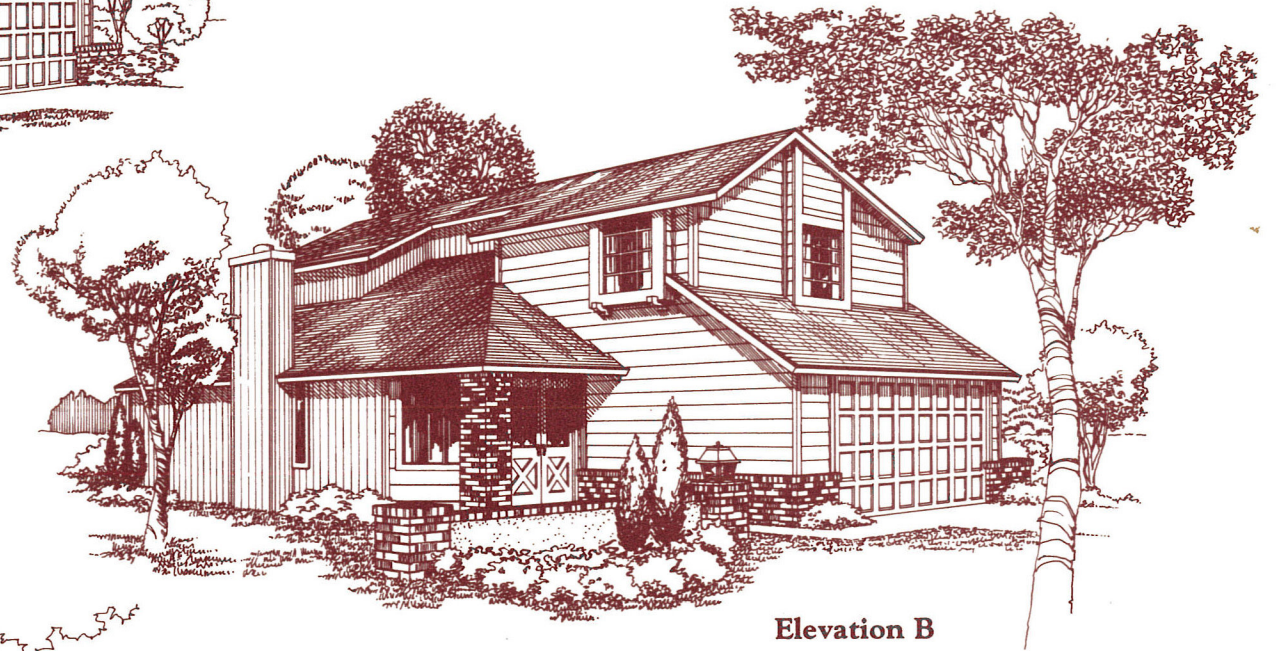
The Bridgehouse
Plan 243
Living Area: 1740 Sq. Feet
Living area increases with addition of 4th bedroom and nook

* Indicates Cathedral Ceiling

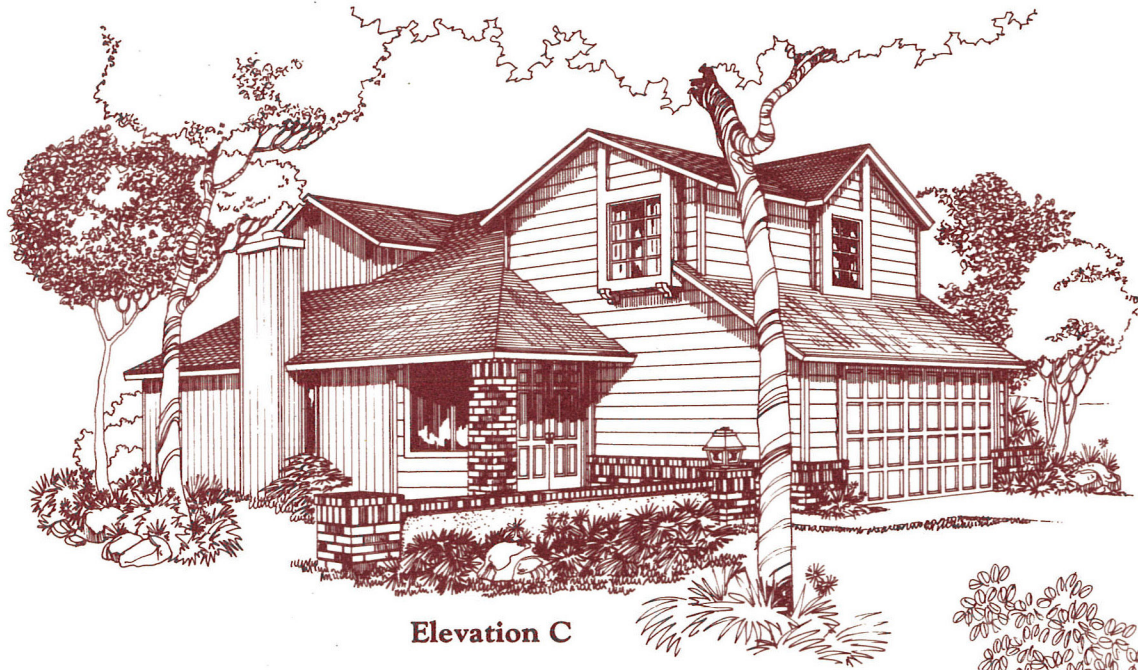
Coventry Homes



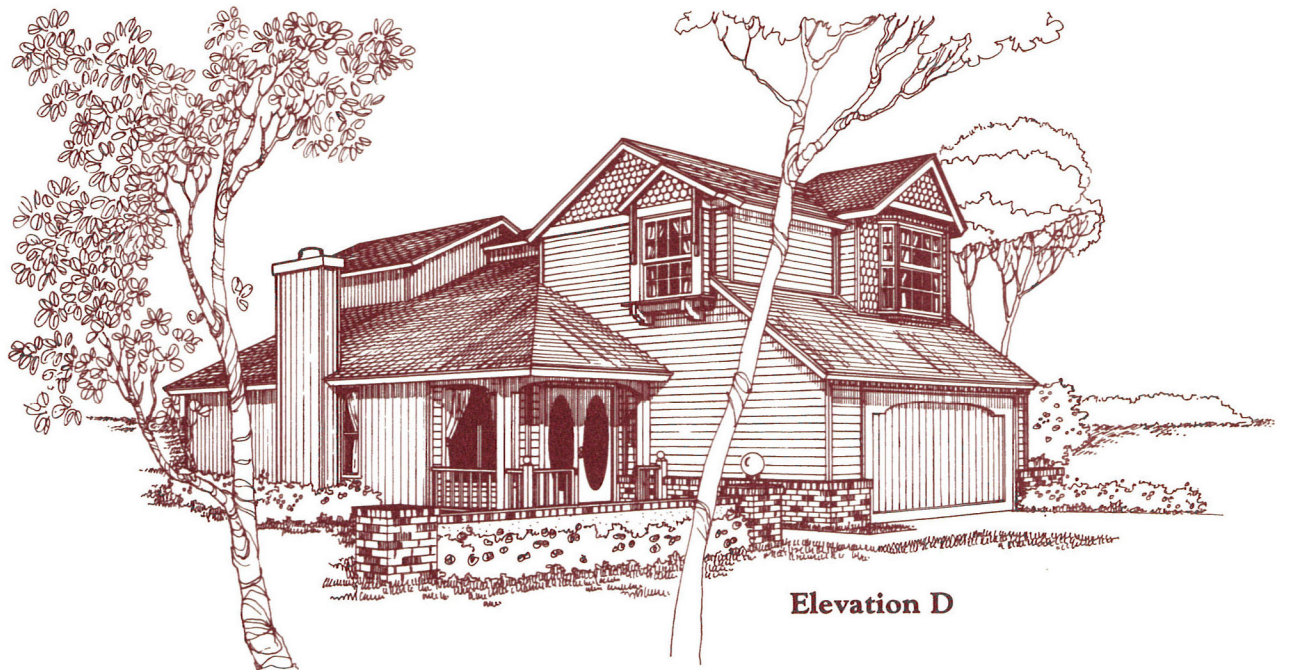
Elevation A



Elevation B

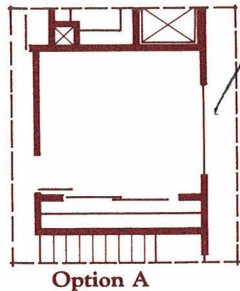


Elevation C

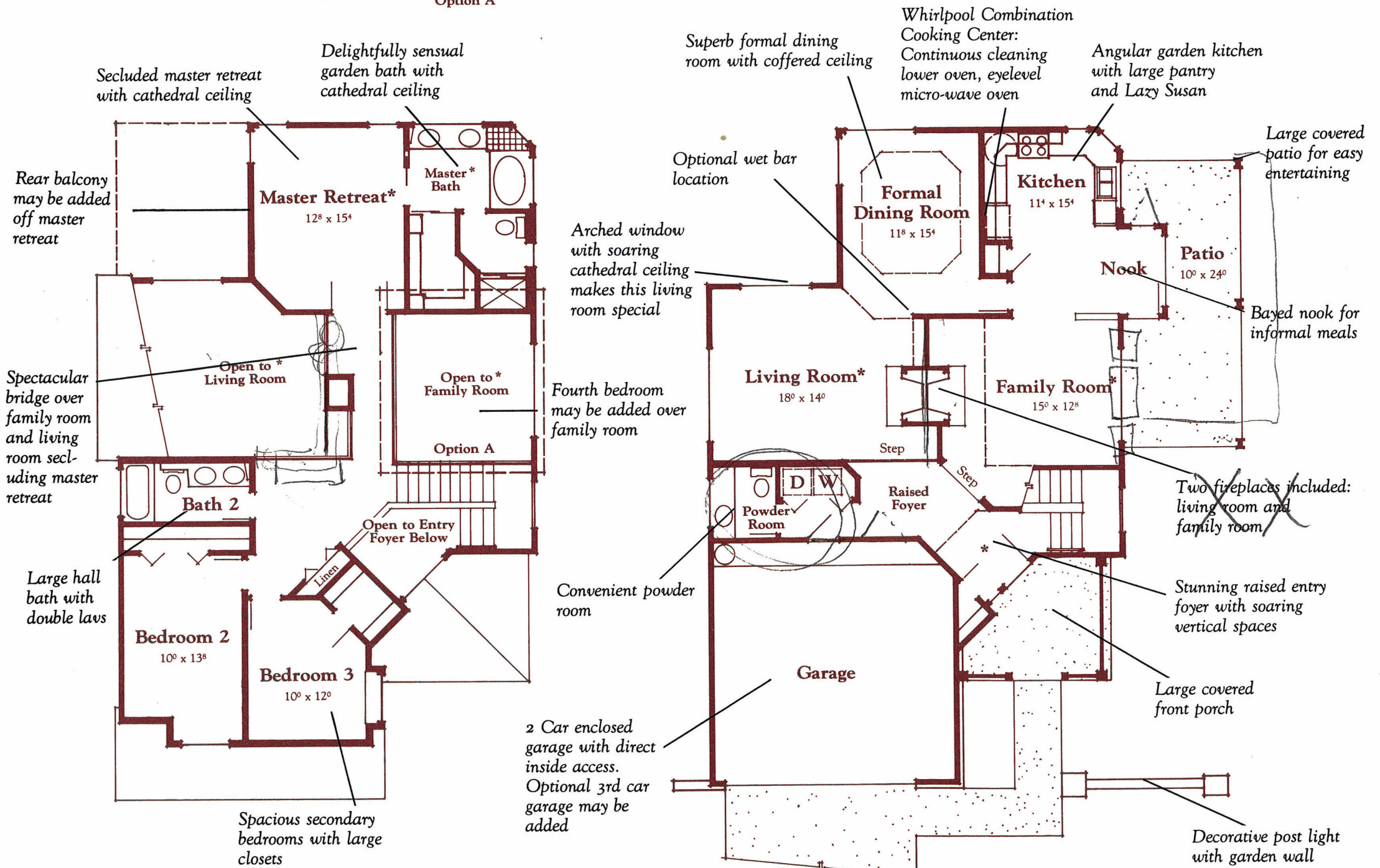


Elevation D

Coventry Homes



\$22,950
Fourth bedroom
may be added
above Family Room



* Indicates Cathedral Ceiling

SPIRE HOUSE

Plan 253

Living Area: 2083 Sq. Feet

Tree lined streets: 1 - 24" box tree and 3 - 15 gallon trees in front yard



Elevation A



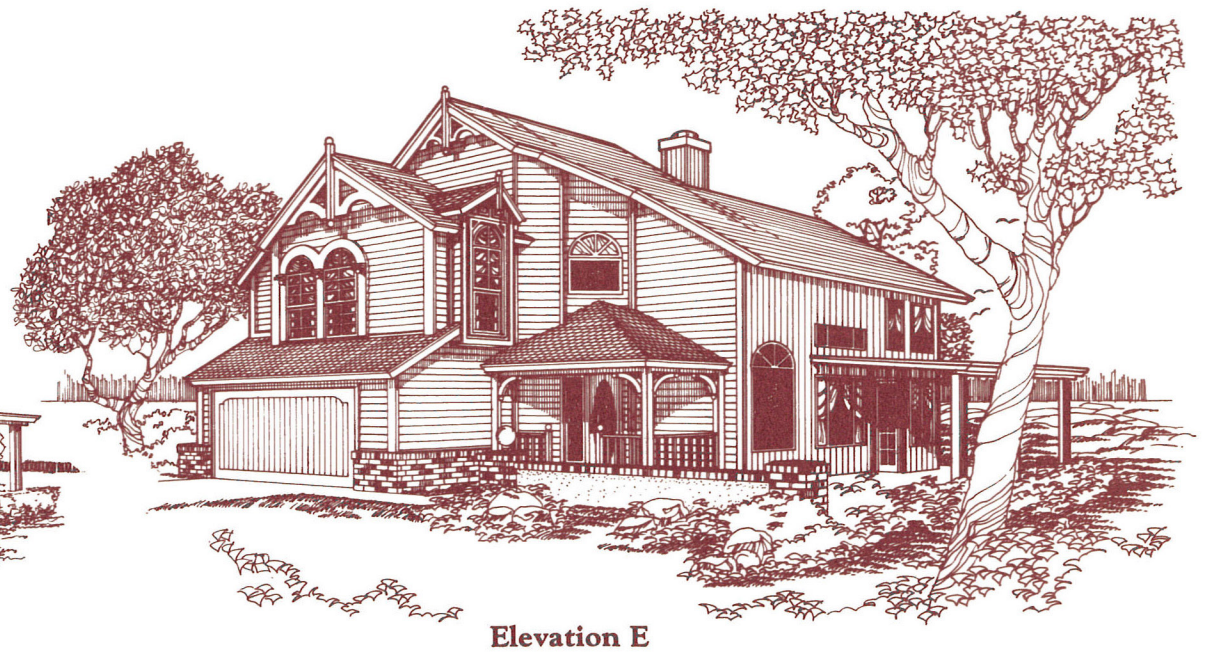
Elevation B



Elevation C



Elevation D

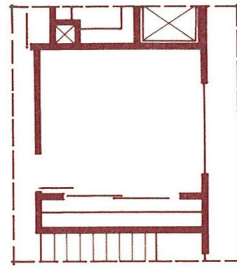


Elevation E

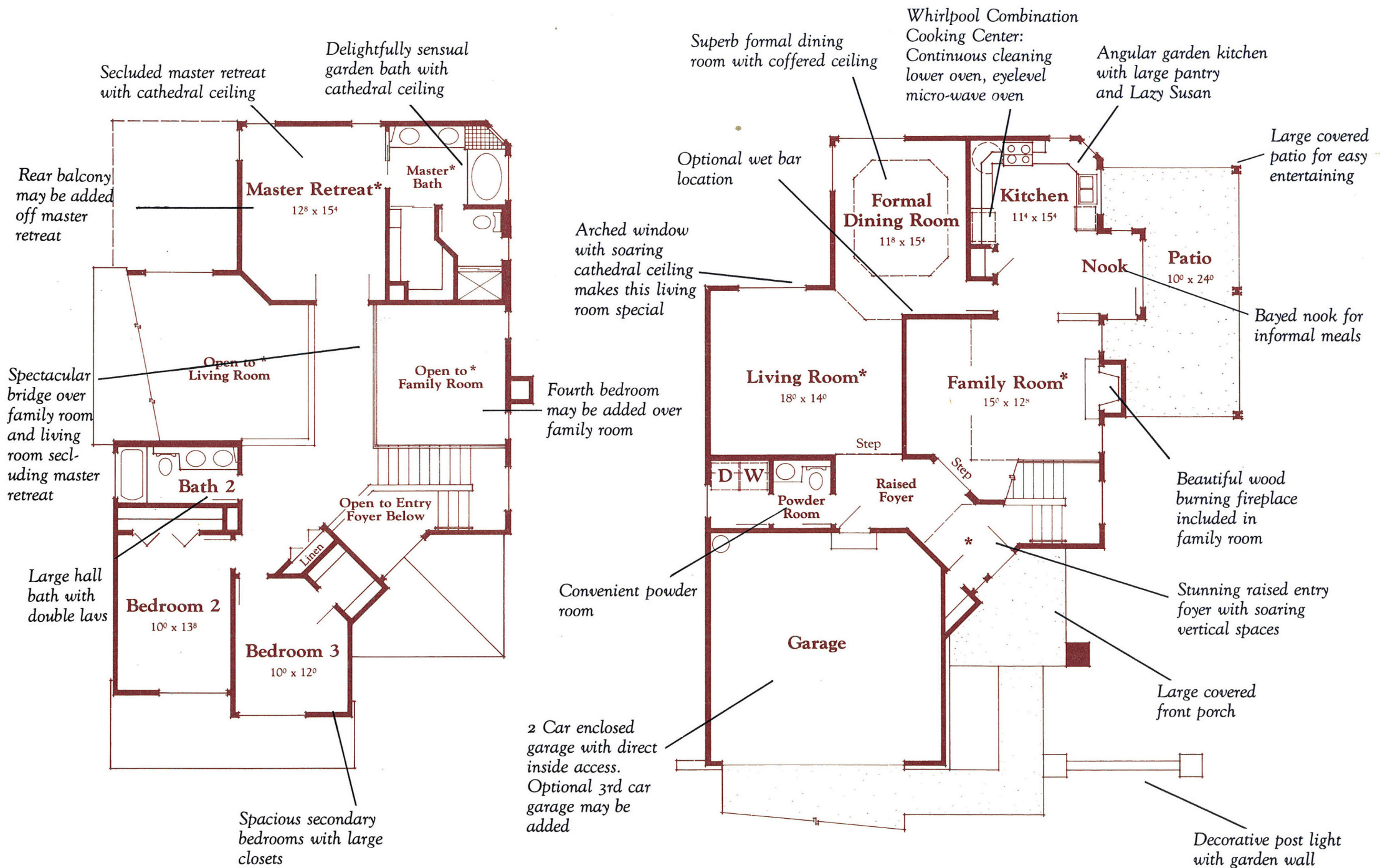
COVENTRY

PLEASE NOTE:
This floor plan and its exterior design (opposite side) are only artist renderings. Location, size, existence of doors, windows, walls, fireplaces and any other item depicted may vary depending on exterior preference or choice of options. Standard features may vary in each Community where plan is built. Complete plans are available for inspection upon request.

ALL DIMENSIONS ARE APPROXIMATE:
Terms: VA, FHA or Conventional. Prices, plans, features and locations are subject to change without notice.



Fourth bedroom may be added above Family Room



The Spirehouse Plan 253

Living Area: 2083 Sq. Feet

Living Area w/optional 4th bedroom: 2231

* Vaulted Ceiling

Tree lined streets: 1 - 24" box tree and 3 - 15 gallon trees in front yard



Elevation B



Elevation C



Elevation D



Elevation E

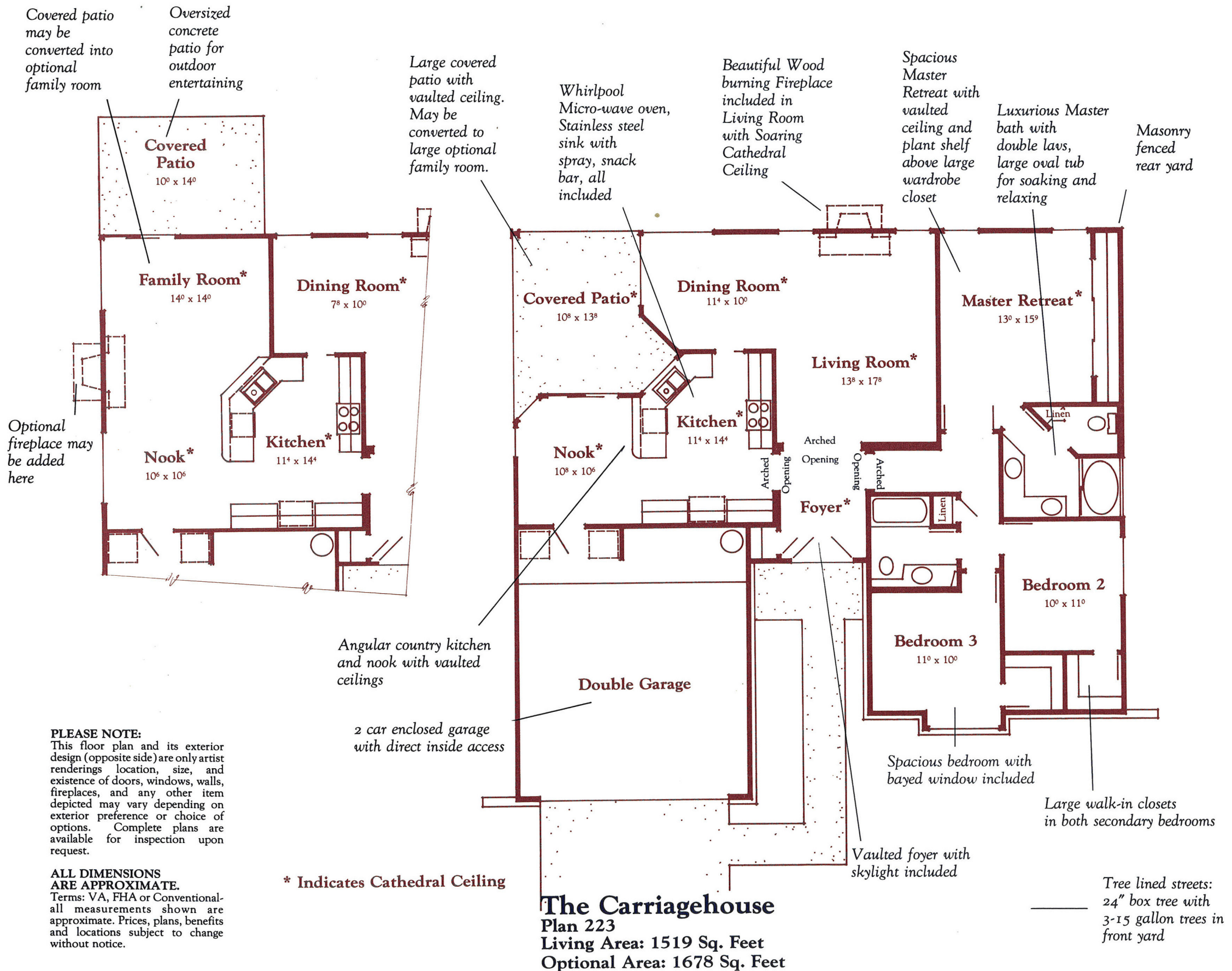


Elevation F



Elevation G

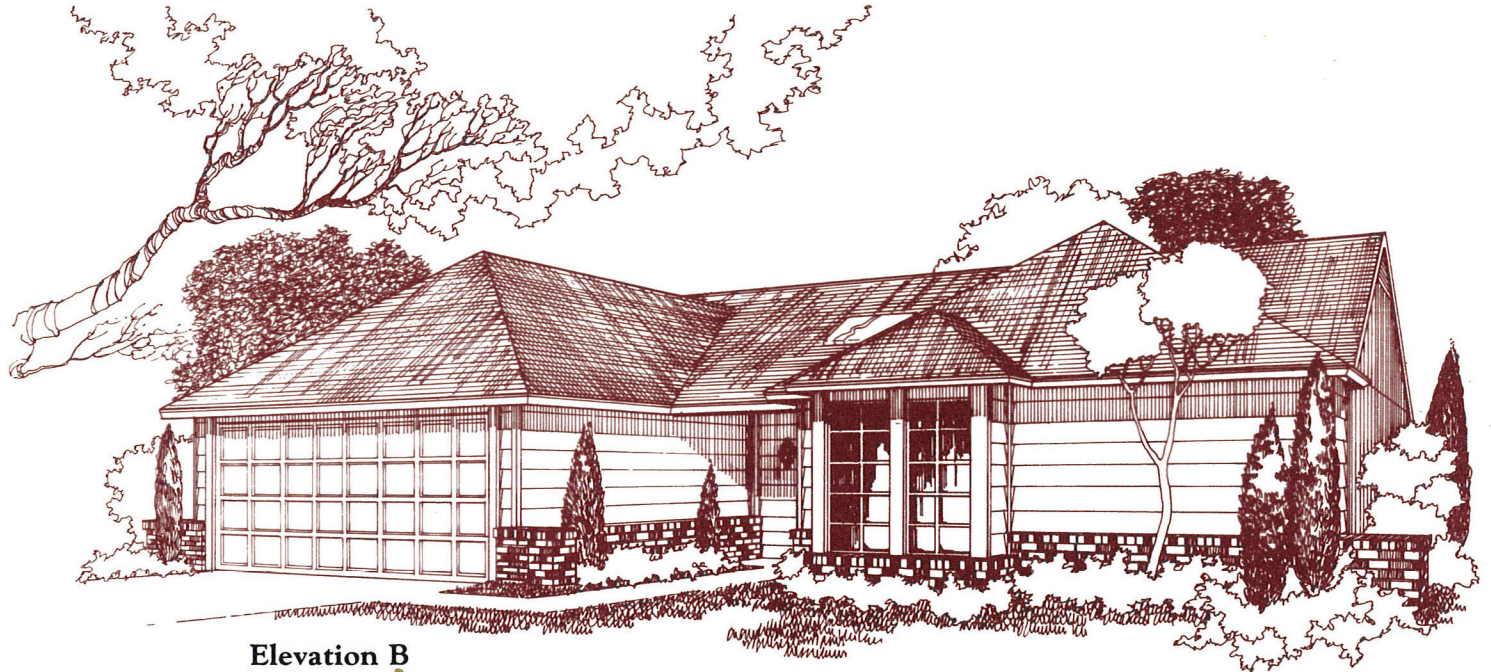
Coventry Homes



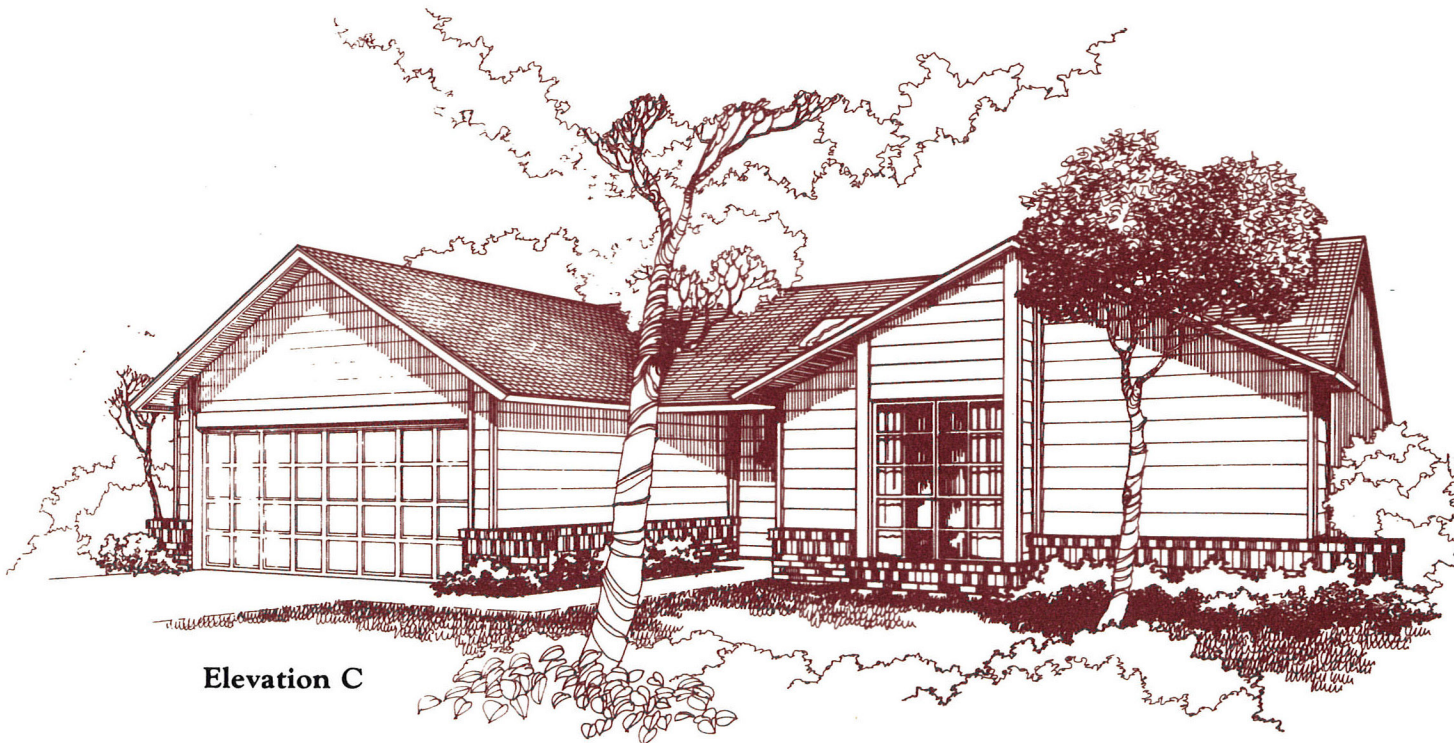
Coventry Homes



Elevation A



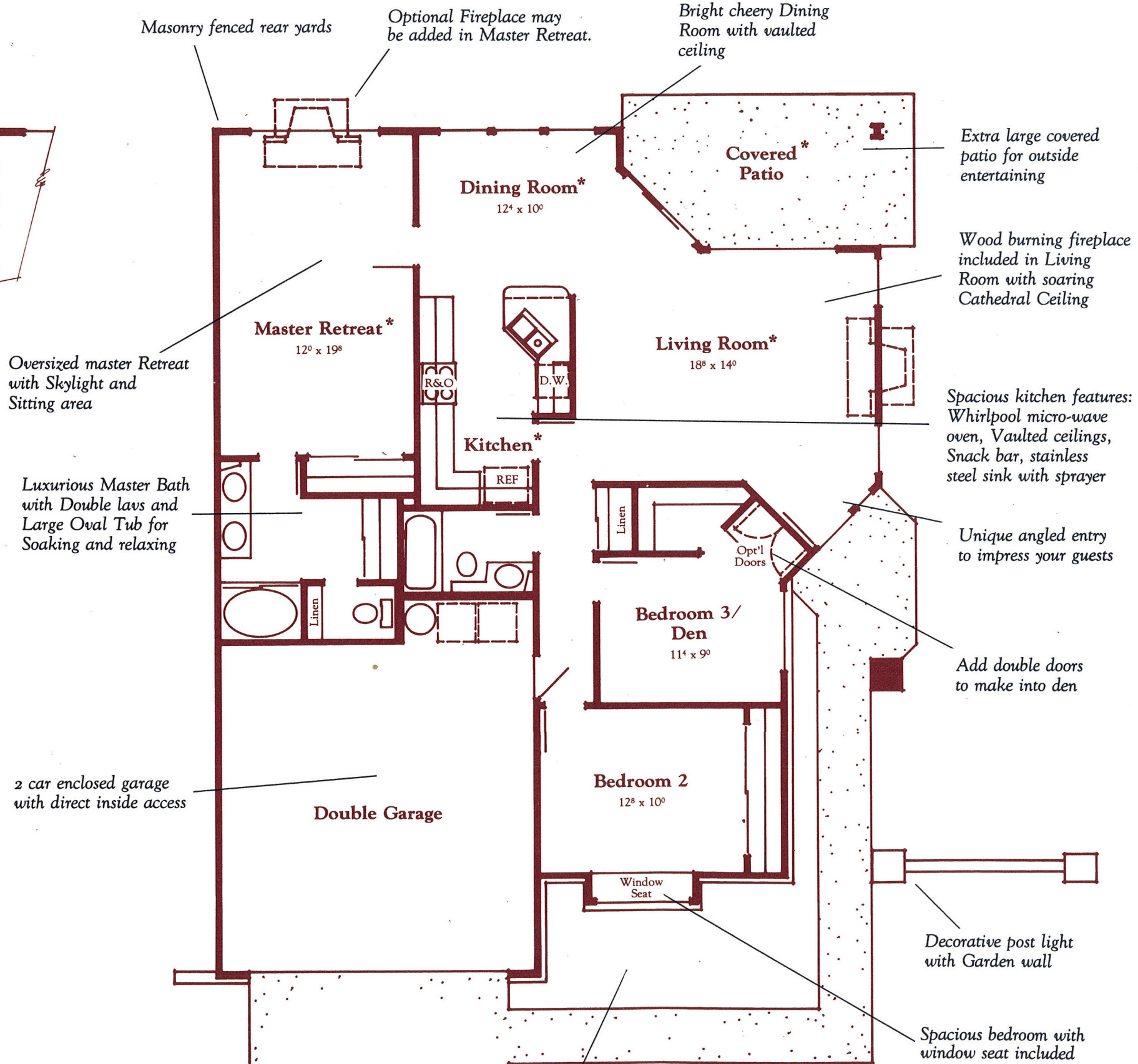
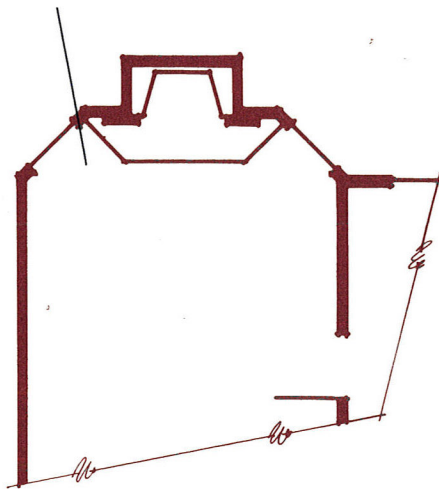
Elevation B



Elevation C

Coventry Homes

Bay window and Fireplace may be added in Master Retreat for ultimate luxury



Oversized master Retreat with Skylight and Sitting area

Luxurious Master Bath with Double lavs and Large Oval Tub for Soaking and relaxing

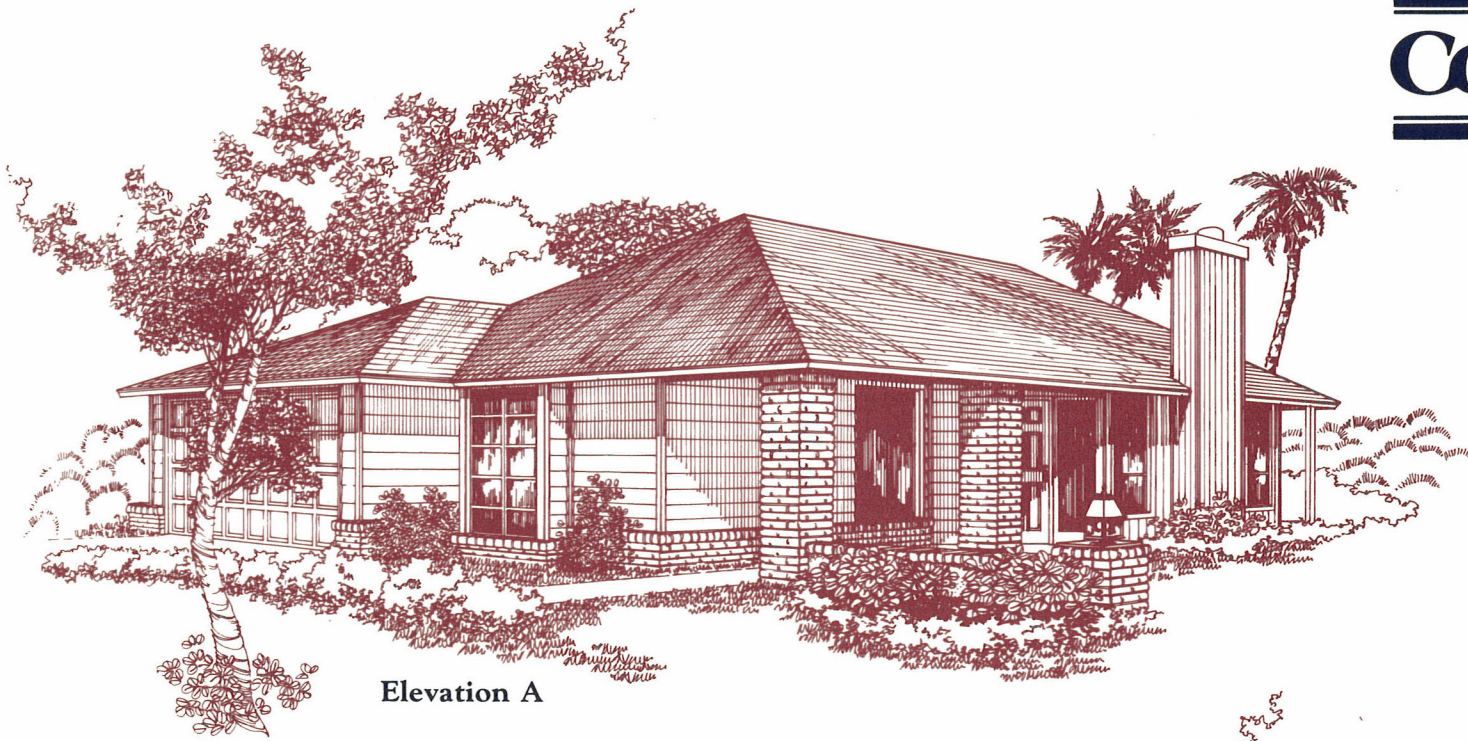
2 car enclosed garage with direct inside access

PLEASE NOTE:
This floor plan and its exterior design (opposite side) are only artist renderings location, size, and existence of doors, windows, walls, fireplaces, and any other item depicted may vary depending on exterior preference or choice of options. Complete plans are available for inspection upon request.

ALL DIMENSIONS ARE APPROXIMATE.
Terms: VA, FHA or Conventional- all measurements shown are approximate. Prices, plans, benefits and locations subject to change without notice.

The Millhouse
Plan 203
Living Area: 1362 Sq. Feet

Coventry Homes



Elevation A



Elevation B



Elevation C

Coventry Homes

Victorian Classic

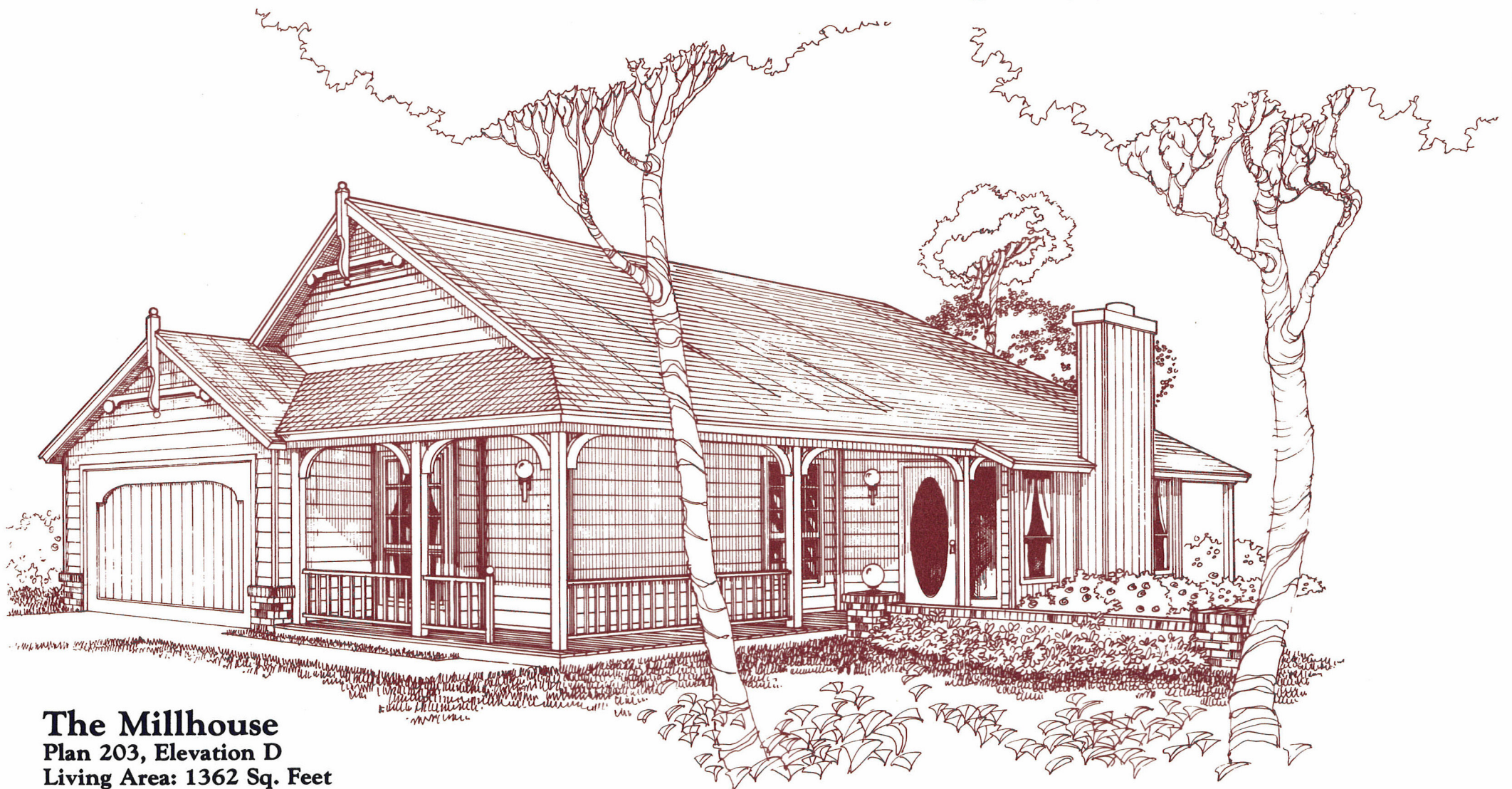


The Bridgehouse
Plan 243, Elevation D
Living Area: 1740 Sq. Feet

Coventry Homes



The Carriagehouse
Plan 223, Elevation D
Living Area: 1519 Sq. Feet



The Millhouse
Plan 203, Elevation D
Living Area: 1362 Sq. Feet