

Knoell Homes

Price Information

RENAISSANCE OF SCOTTSDALE

SHEA BLVD. AND 104TH STREET

SALES CONSULTANT: JACK GABLER

OPEN DAILY: SUNDAY THRU FRIDAY 10 AM TO 7 PM, SATURDAY 10 AM TO 6 PM

PHONE: (602) 948-1286

CHATEAU
Three Bedrooms
Two Baths
2125 Sq. Ft.

Plan R-13-3-A \$149,585
R-13-3-B 144,365
R-13-3-C 144,000
Closing Costs: 3,000

MONACO
Two Bedrooms w/Den
Two Baths
1786 Sq. Ft.
(Model Not Shown)

Plan R-11-2-A \$131,000
R-11-2-B 131,775
R-11-2-C 133,680
Closing Costs: 2,700

REGENCY
Four Bedrooms
Two 1/2 Baths
2675 Sq. Ft.

Plan R-16-4-A \$165,620
R-16-4-B 173,125
R-16-4-C 165,000
R-16-4-D 171,715
Closing Costs: 3,500

RIVIERA
Three Bedrooms
Two 1/2 Baths
2284 Sq. Ft.
(Model Not Shown)

Plan R-14-3-A \$154,400
R-14-3-B 150,145
R-14-3-C 148,000
Closing Costs: 3,100

CONCORDE
Three Bedrooms
Three Baths
2556 Sq. Ft.

Plan R-15-3-A \$159,000
R-15-3-B 168,595
R-15-3-C 160,055
R-15-3-D 169,715
Closing Costs: 3,400

RIVIERA
Four Bedrooms
Two 1/2 Baths
2335 Sq. Ft.
(Model Not Shown)

Plan R-14-4-A \$155,615
R-14-4-B 150,700
R-14-4-C 149,000
Closing Costs: 3,100

MULTIPLE CONVENTIONAL FINANCING PROGRAMS AVAILABLE AT BELOW STREET RATE.

DISCOUNT FOR CASH

10/21/82

RENAISSANCE

SHEA BLVD. AND 104TH STREET, SCOTTSDALE

SALES CONSULTANT: JACK GABLER

OPEN: SUNDAY THRU FRIDAY, 10 AM TO 7 PM, SATURDAY 10 AM TO 6 PM

PHONE: (602) 948-1286

The price of your new Knoell Home will include the following:

Interior Features

- *Generous use of volume ceilings
- *Formal entry with custom tile
- *Colonist interior doors with matching trim
- *Double domed skylights
- *Double door to master bedroom suite
- *Wet bars with Corian top
- *Mirrored sliding doors (where shown)
- *Antique brass hardware throughout
- *Sound insulated bathroom walls
- *Superior built-in fireplace
- *Plush wall-to-wall carpeting with no-wax sheet vinyl in kitchen, baths and utility room
- *Breakfast nook

Exterior Features

- *Salt finish on walks and patios
- *Heavy wood shake shingles
- *Bronze window frames and sliding glass doors
- *2-car garage with sectional garage door
- *Automatic garage door openers
- *Vaulted covered patios with decorative pillars
- *Pool size homesites
- *Concrete block fully enclosed rear yard

Baths

- *Cultured marble Ultra tubs
- *Cultured marble vanity top with integral super bowls/double lavatories in master bath
- *Separate master bath shower stall in Plans 14, 15 & 16; extra large tub in Plans 11 & 13

Kitchen

- *Oak custom cabinets with choice of 3 styles
- *Large pantry
- *Side guide drawer system
- *Preplumbed water line for icemaker
- *Deluxe stainless steel sink w/Moen faucet
- *Whirlpool appliances featuring:
 - 1/2 HP disposal
 - built-in double black glass, self-cleaning and microwave ovens
 - separate 4-burner range top
 - Super Scour dishwasher

Construction Features

- *Water heater timer
- *Zoned ground mounted central air cond. system incl. energy efficient heat pumps (except Plan 11-2)
- *Underground utilities
- *200 amp electrical service
- *Copper plumbing
- *All electric home
- *Prewire for telephone
- *Plumbed for soft water
- *Copper wiring 110V circuits
- *Average R-23 exterior walls (note: sliding area R-20)
- *R-30 insulated ceilings

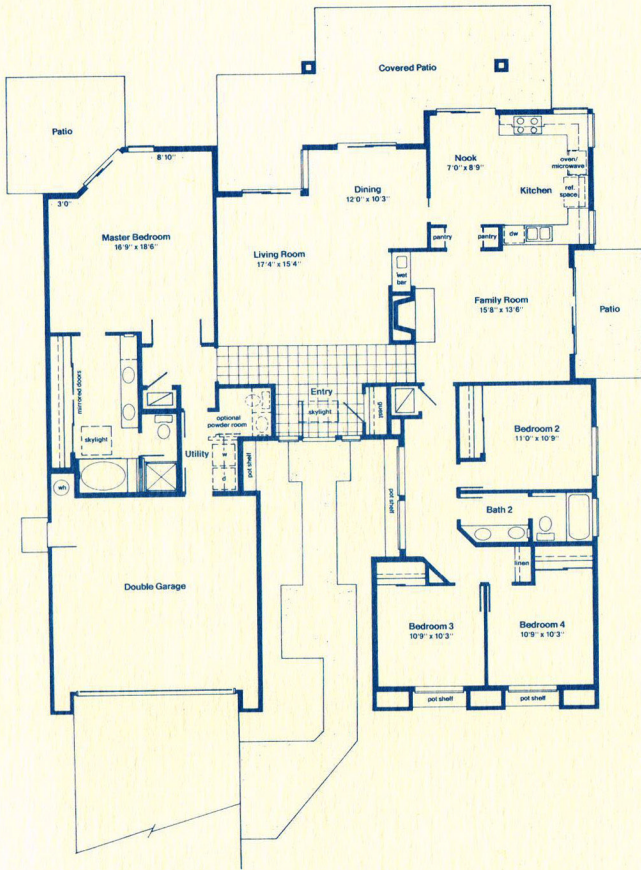
Optional Items

Consult your Knoell Homes sales representative for specific options, their availability and pricing.

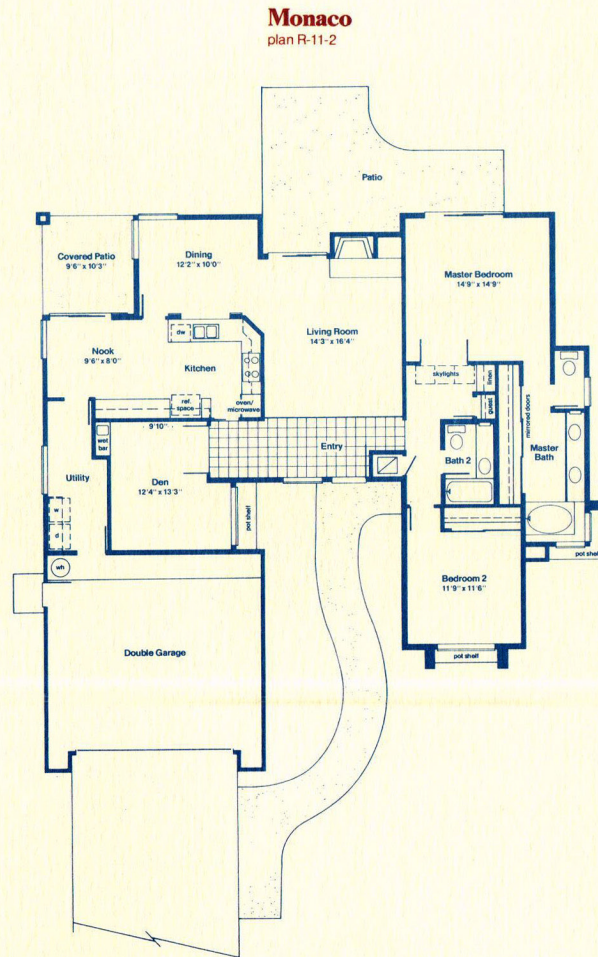
1/03/83

Improvements or changes in products and designs may result in Knoell Homes altering without notice or obligation any of the above features or specifications, striving always to provide you with the best amenity value possible.

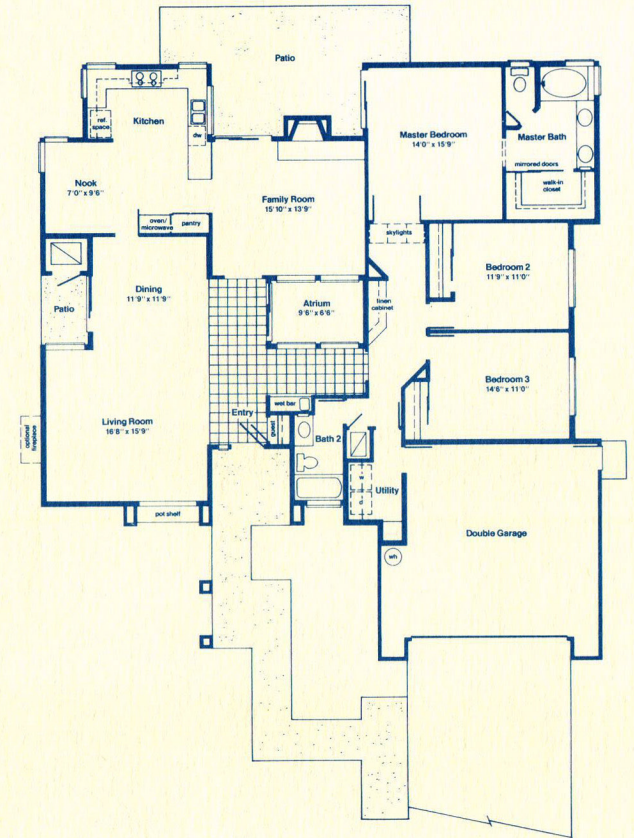




Riviera
plan R-14-3



Monaco
plan R-11-2

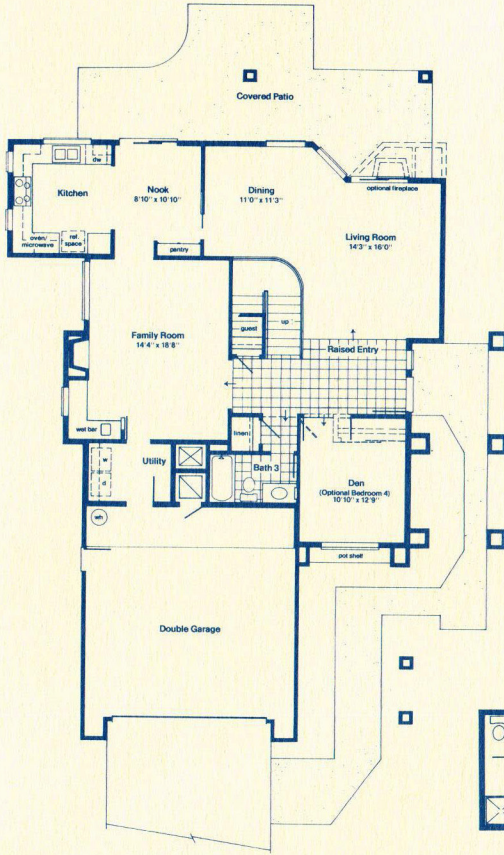


Chateau
plan R-13-3

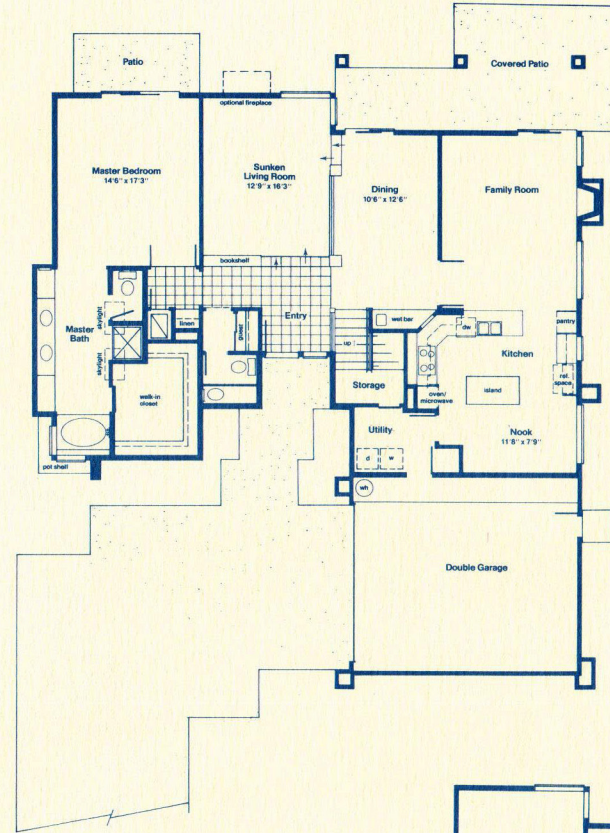
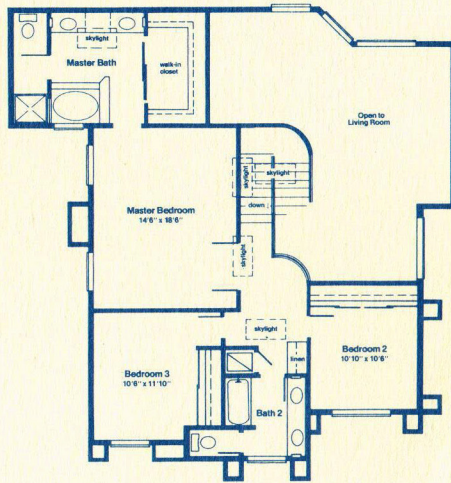


EQUAL HOUSING
OPPORTUNITY

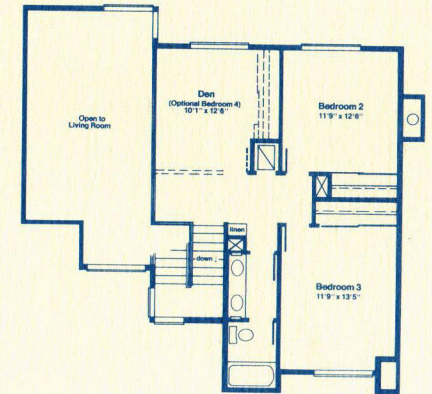
All measurements are approximate



Concorde
plan R-15-3 (2-story)



Regency
plan R-16-4 (2-story)



All measurements are approximate