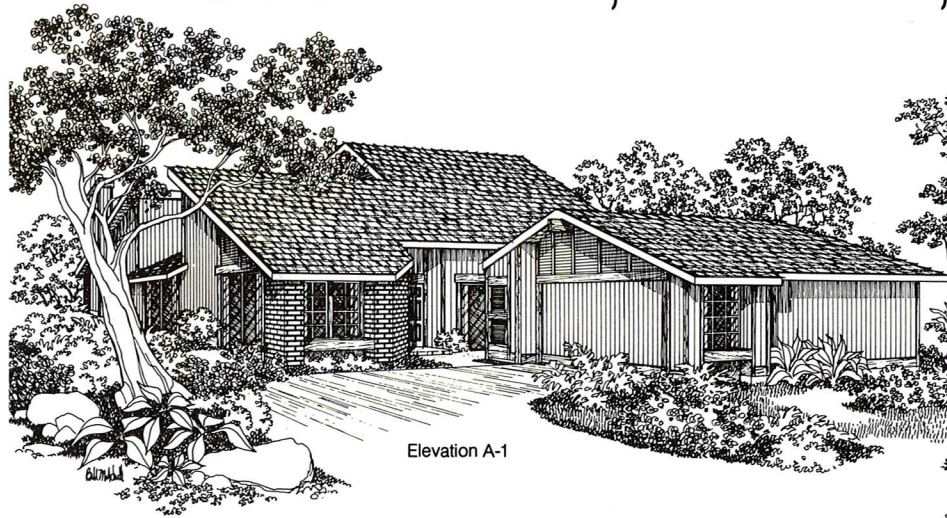
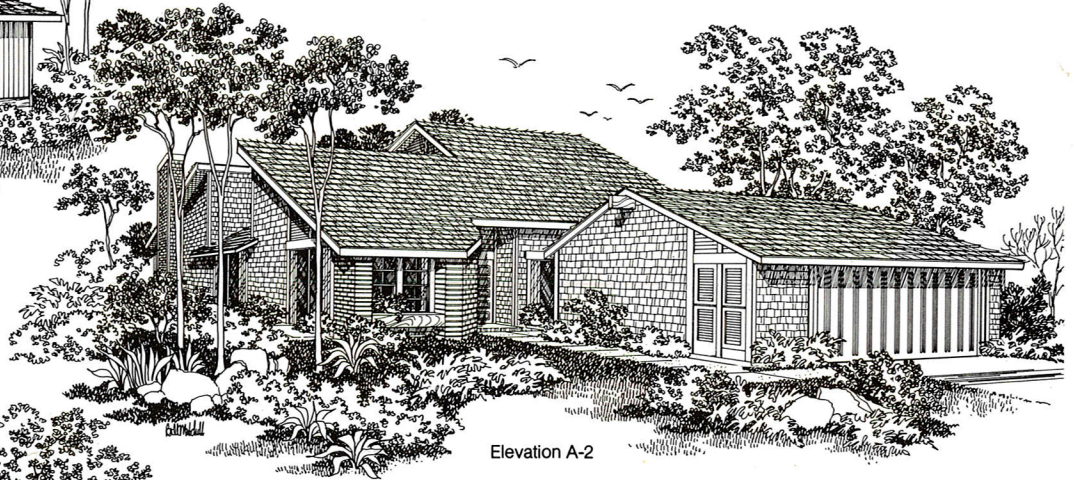


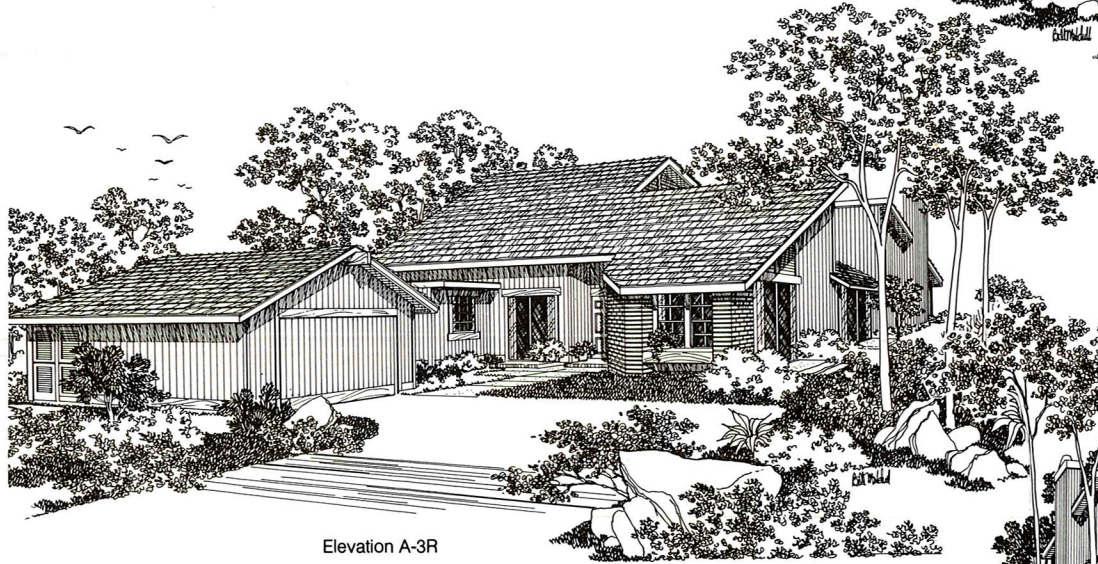
3 bedrooms, 2 baths, fireplace, 2-car garage.



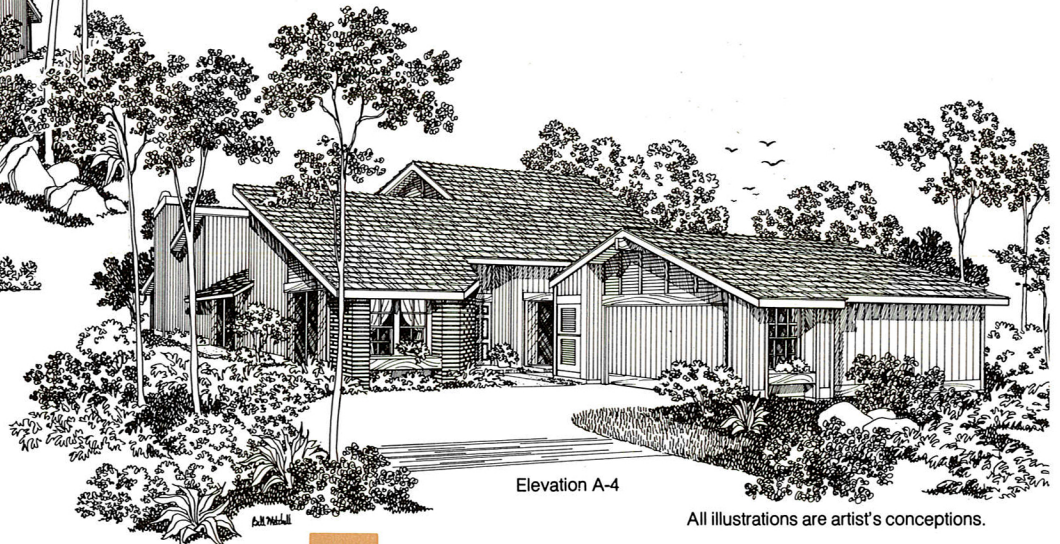
Elevation A-1



Elevation A-2



Elevation A-3R



Elevation A-4

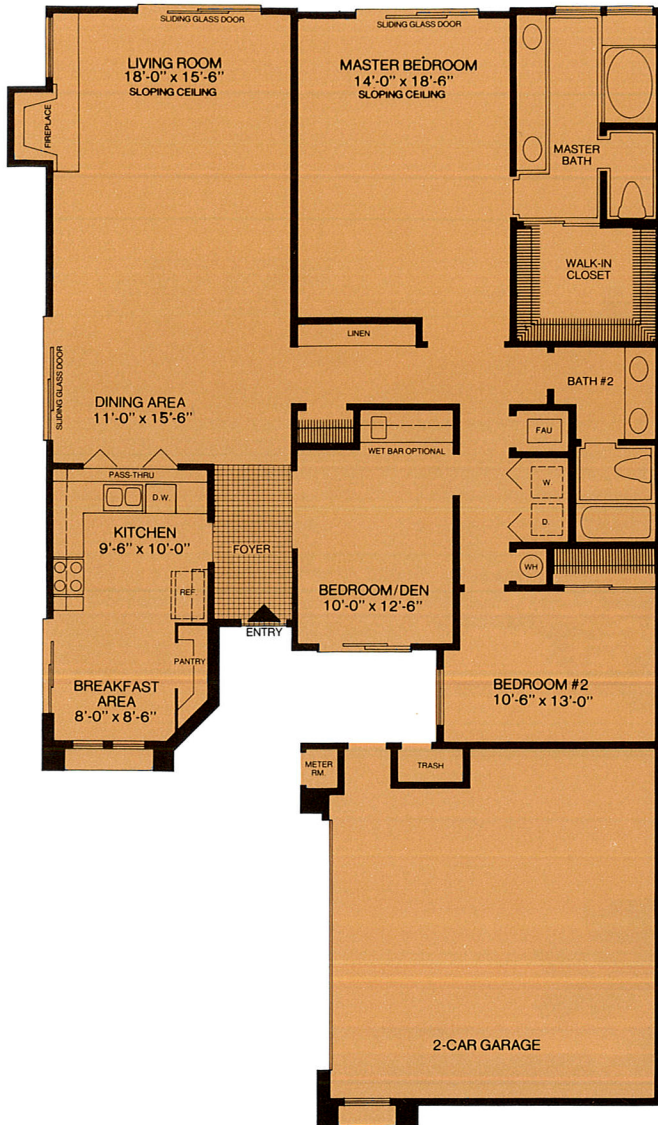
All illustrations are artist's conceptions.

Plan A

The Antigua

3 bedrooms, 2 baths, fireplace, 2-car garage.

Design—The Hoffman Advertising Group, Inc. New York • Chicago • Denver • Miami • Tampa • Washington, D.C. • 6785



- 6 rooms encompassing over 1,810 feet of living space on one level.
- Quality wall-to-wall carpeting.
- Ceramic tile reception foyer.
- Entertainment-size living room with sloped ceiling, raised hearth woodburning fireplace with gas log lighter, and sliding glass doors.
- Two eating areas—dining area with sliding glass doors and pass through from kitchen, plus breakfast area in kitchen.
- Whirlpool all-electric kitchen complete with microwave oven, self-cleaning oven, 3-cycle dishwasher (all with black glass fronts), disposer, stainless steel double sink, ceramic tile work counters, custom ashwood cabinets, luminous ceiling and sliding glass doors.
- Laundry area with connections for washer and electric dryer.
- The master bedroom is a suite. It has a sloped ceiling, walk-in closet, private bath with "His" and "Hers" double-bowl vanity and a dramatic oval tub.
- The third bedroom may be utilized as a den. It has sliding glass doors to the front garden area and a large closet that can be converted into a wet bar (optional).
- Both bathrooms are full bathrooms and feature ceramic tile vanities, twin sinks, quality fixtures and water-saver toilets.
- All wood (cedar or shingle) exteriors highlighted by dramatic architectural touches. Wood shake roofs are standard.
- Fully enclosed two-car garage includes automatic door opener and two transmitters, storage space and trash can storage area.
- Energy-saving insulation in walls and ceilings.
- Smoke detectors.
- Custom oak stair railing.
- Privacy wood fencing.
- Stained birch interior doors.
- Centex Homes' written warranty.

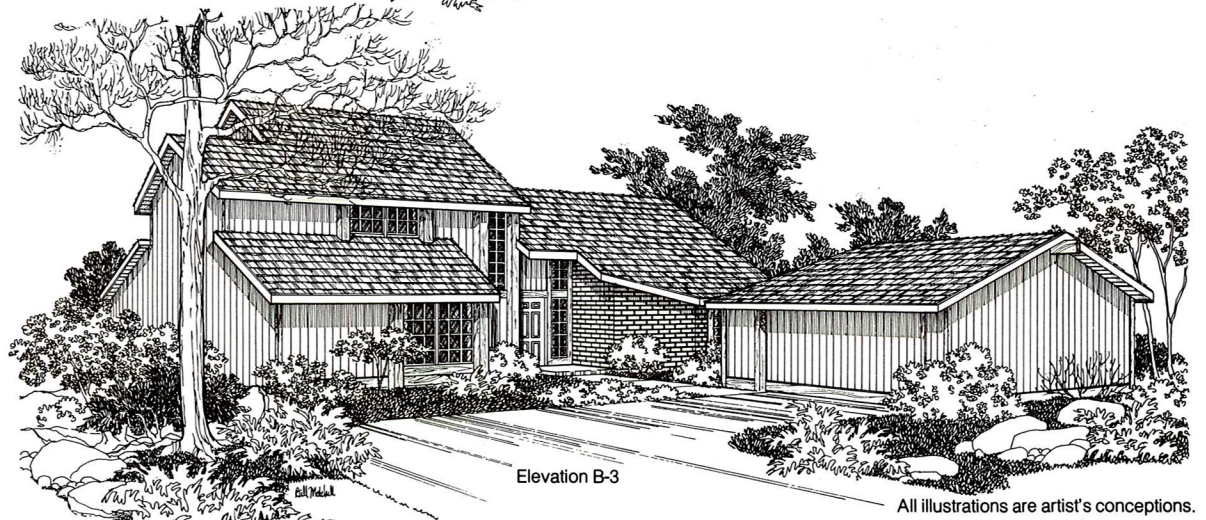
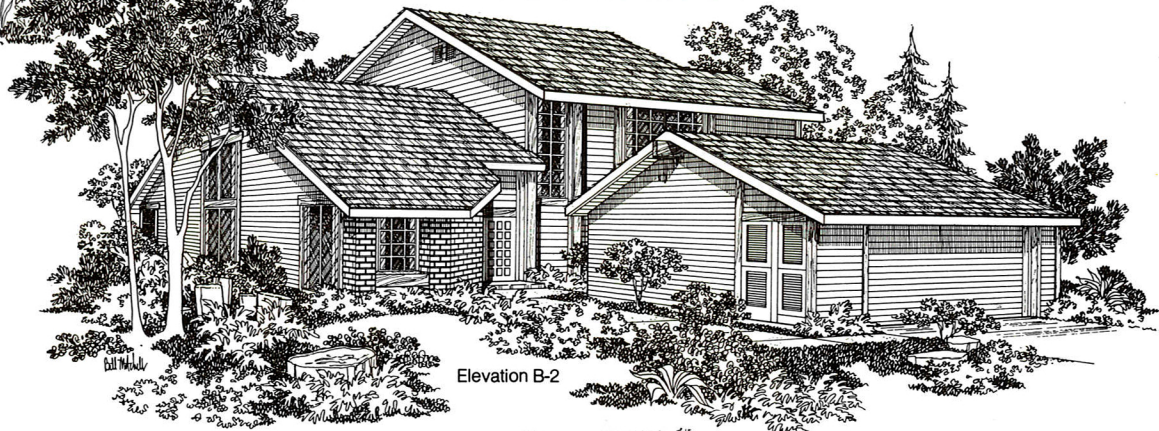
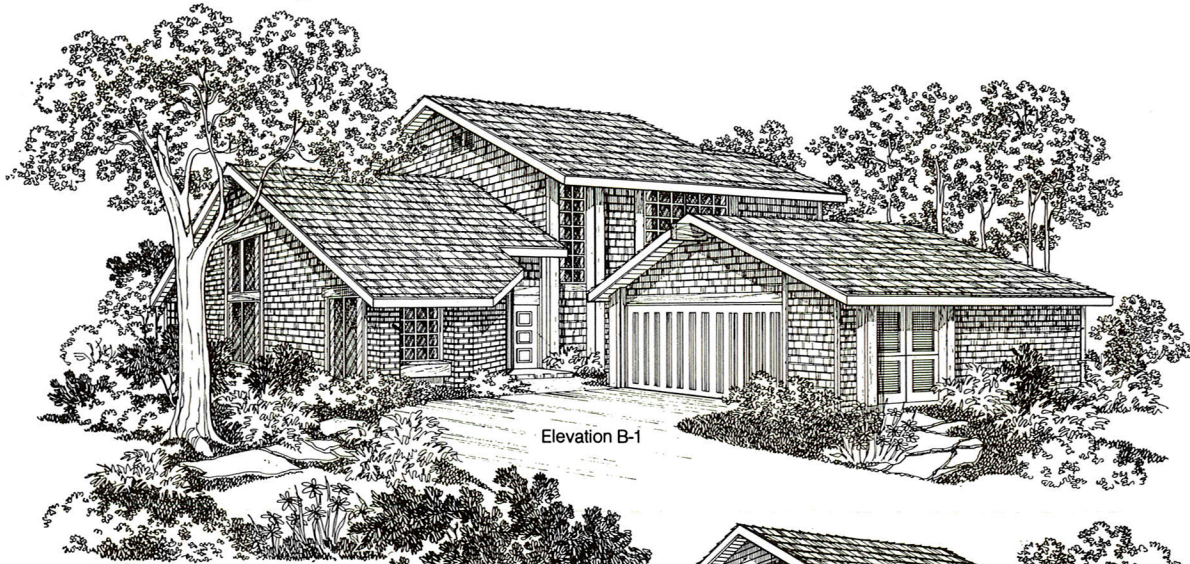
Directions: Bayshore (U.S. 101) to Hillsdale Boulevard (Foster City Exit).
Go east on Hillsdale Boulevard across the bridge.
Take 2nd right (Edgewater Avenue).
Proceed 2 miles to Pitcairn Avenue then left to model homes.
Hours: Open 7 days a week from 10 AM.
Phone: (415) 349-7922.



Plan A

The Antigua

2-story home, 4 bedrooms, 2 baths, fireplace,
2-car garage.



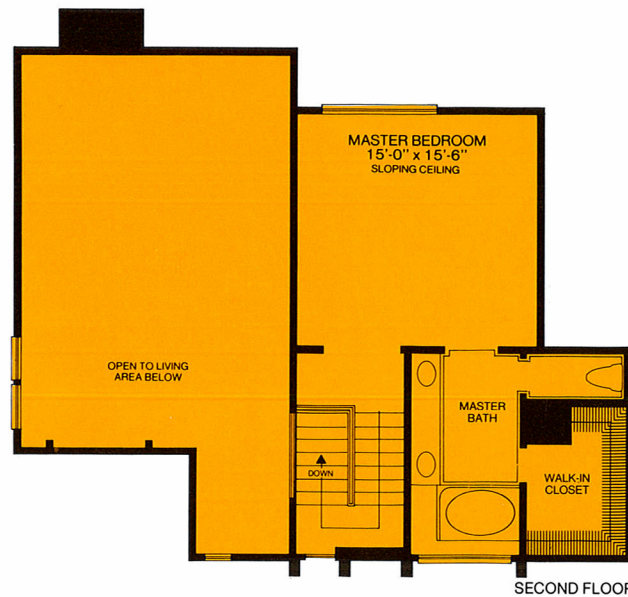
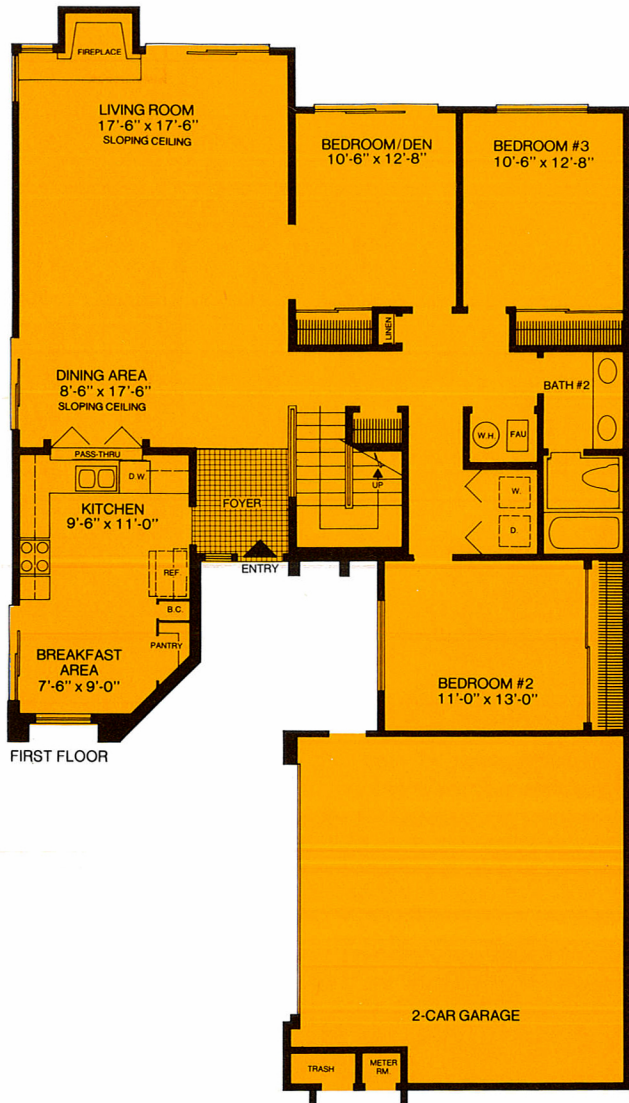
Plan B

The Barbados

All illustrations are artist's conceptions.

2-story home, 4 bedrooms, 2 baths, fireplace, 2-car garage.

Design—The Hoffman Advertising Group, Inc. New York · Chicago · Denver · Miami · Tampa · Washington D.C. · 6785



- 7 rooms comprising over 2,007 square feet of living space.
- Quality wall-to-wall carpeting.
- Two-story living room with vaulted ceiling, raised hearth woodburning fireplace with gas log lighter, and sliding glass doors.
- Two eating areas—dining area with sliding glass doors and pass-through from kitchen, plus breakfast area in kitchen.
- Whirlpool all-electric kitchen complete with microwave oven, self-cleaning oven, 3-cycle dishwasher (all with black glass fronts), disposer, stainless steel double sink, ceramic tile work counters, custom ashwood cabinets, luminous ceiling and sliding glass doors.
- Separate utility/laundry room with connections for washer and electric dryer.
- Master bedroom suite is set on second floor for maximum privacy. It has sloped ceiling and walk-in closet.
- Three other bedrooms grouped in one wing of first floor. Each features a large closet and enjoys easy access to a full bath with custom twin-sink vanity.
- Both bathrooms are full bathrooms and feature ceramic tile vanities, quality fixtures and water-saver toilets. Additionally, the master bathroom has a dramatic oval tub and "His" and "Hers" double bowl vanity.
- All wood (cedar or shingle) exteriors highlighted by dramatic architectural touches. Wood shake roofs are standard.
- Fully enclosed two-car garage includes automatic door opener and two transmitters, storage space and trash can storage area.
- Energy-saving insulation in walls and ceilings.
- Smoke detectors.
- Custom oak stair railing.
- Privacy wood fencing.
- Stained birch interior doors.
- Centex Homes' written warranty.

Directions: Bayshore (U.S. 101) to Hillsdale Boulevard (Foster City Exit).
Go east on Hillsdale Boulevard across the bridge.
Take 2nd right (Edgewater Avenue).
Proceed 2 miles to Pitcairn Avenue then left to model homes.
Hours: Open 7 days a week from 10 AM.
Phone: (415) 349-7922.

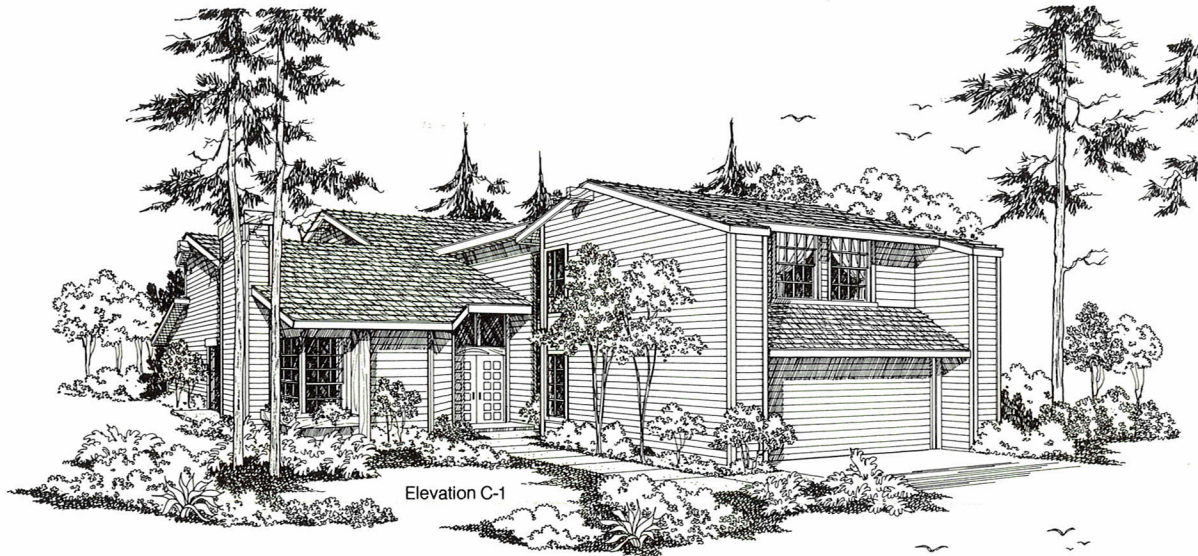
Plan B



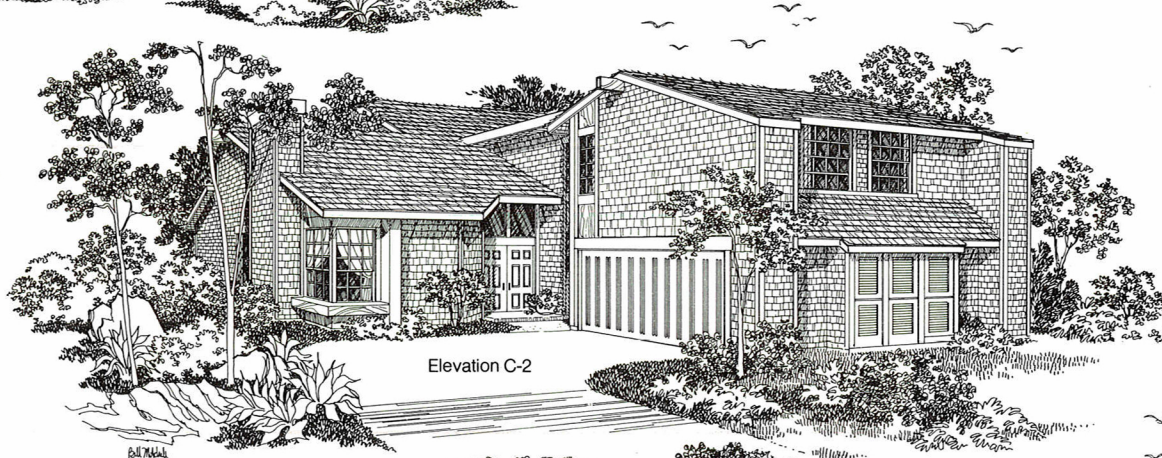
by **Centex Homes**
of California, Inc.
A subsidiary of Centex Corporation,
listed on the New York Stock Exchange

The Barbados

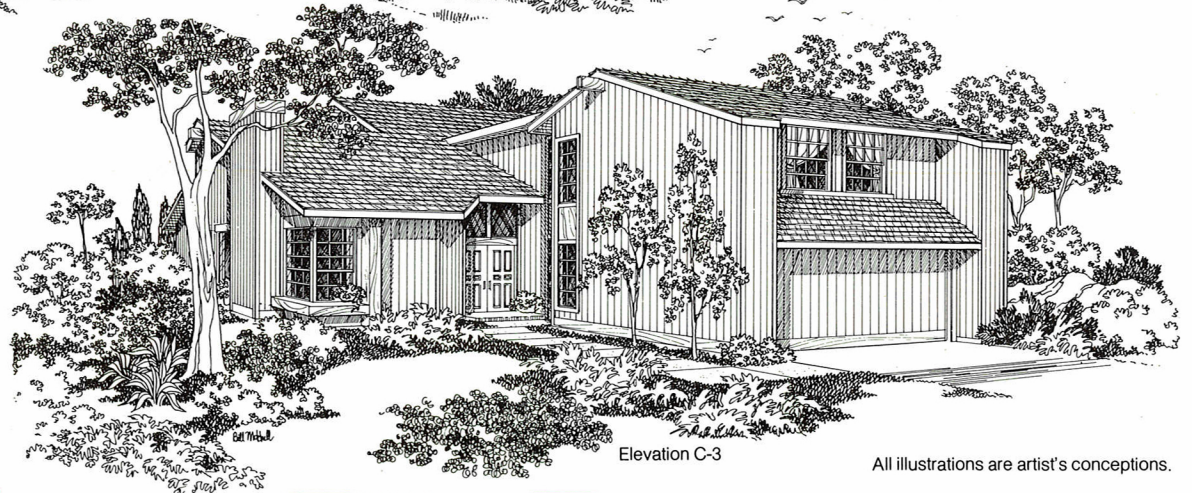
2-story home, 3 bedrooms, 2½ baths, fireplace,
2-car garage.



Elevation C-1



Elevation C-2



Elevation C-3

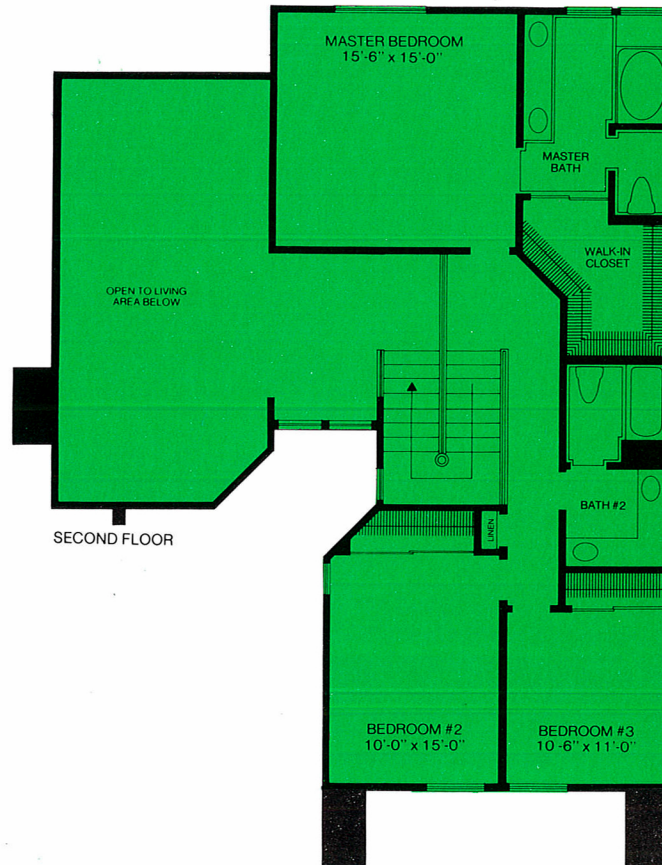
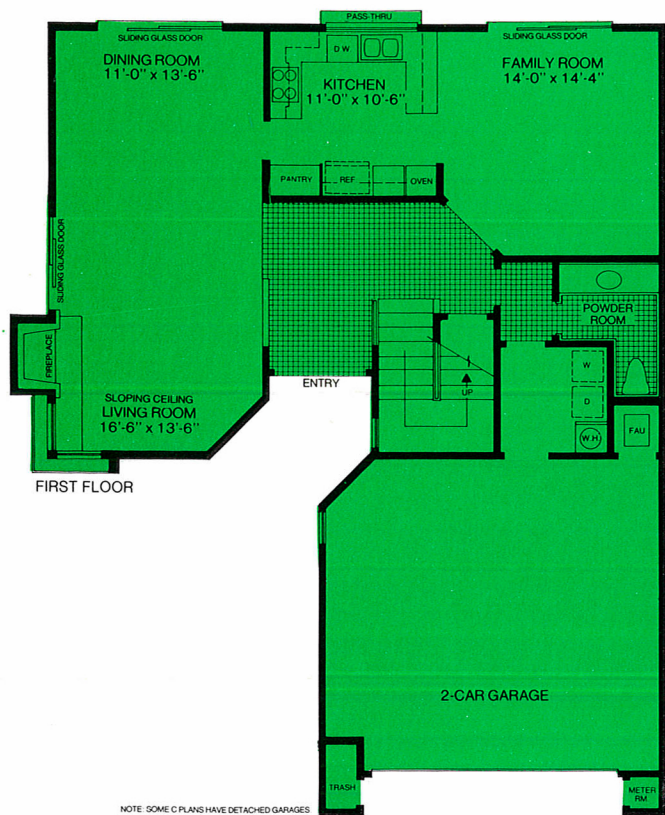
All illustrations are artist's conceptions.

Plan C

The Caribbean

Plan C The Caribbean

2-story home, 3 bedrooms, 2½ baths, fireplace, 2-car garage.

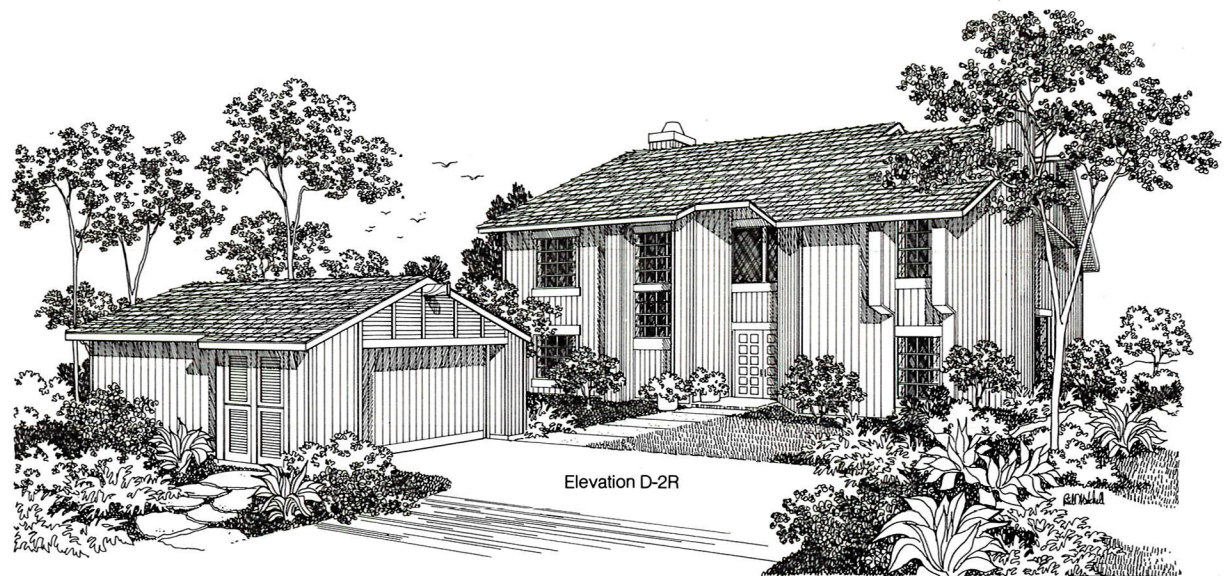


- 7 rooms totaling over 2,114 square feet of living area.
- Quality wall-to-wall carpeting.
- Double door entry leads to ceramic tile foyer, hallway and powder room.
- Two-story living room has vaulted ceiling, raised hearth woodburning fireplace with gas log lighter, and sliding glass doors.
- Dining room with sloped ceiling and sliding glass doors.
- Whirlpool all-electric kitchen complete with microwave oven, self-cleaning oven, 3-cycle dishwasher (all with black glass fronts), disposer, stainless steel double sink, ceramic tile work counters, custom ashwood cabinets and luminous ceiling.
- Separate utility/laundry room with connections for washer and electric dryer.
- 3 bedrooms grouped on second floor for maximum privacy.
- Master bedroom has giant walk-in closet.
- All baths and powder room feature ceramic tile vanities. Quality fixtures and water-saver toilets. Both full baths have twin sinks and master bathroom has a dramatic oval tub.
- All wood (cedar or shingle) exteriors highlighted by architectural touches. Wood shake roofs are standard.
- Fully enclosed two-car garage includes automatic door opener and two transmitters, storage space and trash can storage area.
- Energy-saving insulation in walls and ceilings.
- Smoke detectors.
- Custom oak stair railing.
- Privacy wood fencing.
- Stained birch interior doors.
- Centex Homes' written warranty.



Directions: Bayshore (U.S. 101) to Hillsdale Boulevard (Foster City Exit).
Go east on Hillsdale Boulevard across the bridge.
Take 2nd right (Edgewater Avenue).
Proceed 2 miles to Pitcairn Avenue then left to model homes.
Hours: Open 7 days a week from 10 AM.
Phone: (415) 349-7922.

2-story home, 4 bedrooms, 2½ baths, 2 fireplaces,
2-car garage.



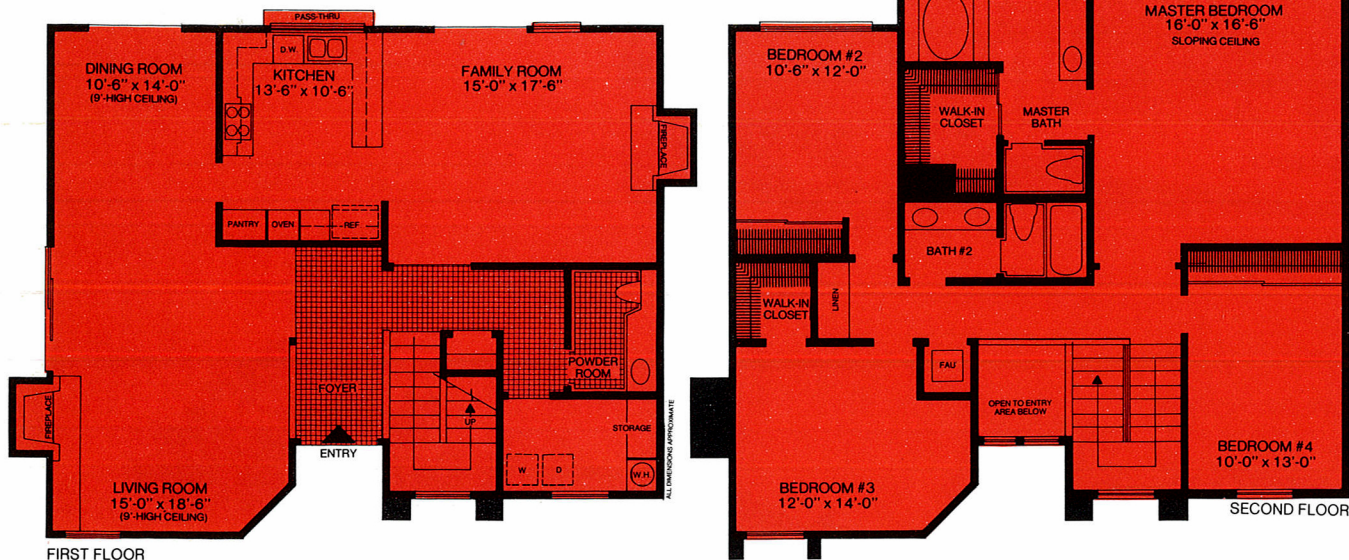
All illustrations are artist's conceptions.

Plan D

The Dominica

Plan D The Dominica

2-story home, 4 bedrooms, 2½ baths, 2 fireplaces, 2-car garage.



- 8 rooms with over 2,459 square feet of living space.
- Quality wall-to-wall carpeting.
- Ceramic tile foyer, hallway and powder room.
- Magnificent living room features 9'-high sloped ceiling, raised hearth woodburning fireplace with gas log lighter, and sliding glass doors.
- Family room designed for "large-size" informal entertaining has floor-to-ceiling woodburning fireplace with gas log lighter, and sliding glass doors.
- Dining room with 9'-high sloped ceiling and sliding glass doors.
- Whirlpool all-electric kitchen complete with microwave oven, self-cleaning oven, 3-cycle dishwasher (all with black glass fronts), disposer, stainless steel double sink, ceramic tile work counters, custom ashwood cabinets and luminous ceiling.
- Separate utility/laundry room with storage area. Connections for washer and electric dryer are provided.
- Bedrooms grouped on separate floor for maximum privacy.
- Master bedroom has large walk-in closet.
- All baths and powder room feature ceramic tile vanities, quality fixtures and water-saver toilets. Both full baths have twin sinks and master bedroom has a dramatic oval tub.
- highlighted by dramatic architectural touches. Wood shake roofs are standard.
- Fully enclosed two-car garage includes automatic door opener and two transmitters, storage space and trash can storage area.
- Energy-saving insulation in walls and ceilings.
- Smoke detectors.
- Custom oak stair railing.
- Privacy wood fencing.
- Stained birch interior doors.
- Centex Homes' written warranty.



Directions: Bayshore (U.S. 101) to Hillsdale Boulevard (Foster City Exit).
Go east on Hillsdale Boulevard across the bridge.
Take 2nd right (Edgewater Avenue).
Proceed 2 miles to Pitcairn Avenue then left to model homes.
Hours: Open 7 days a week from 10 AM.
Phone: (415) 349-7922.