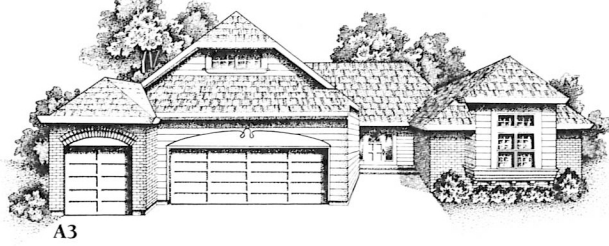
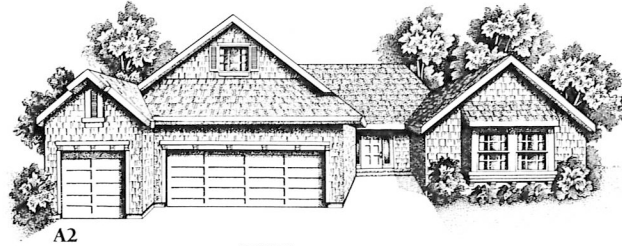
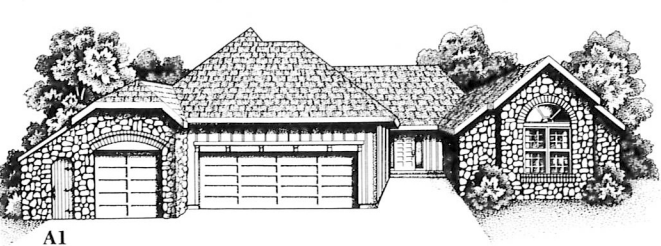


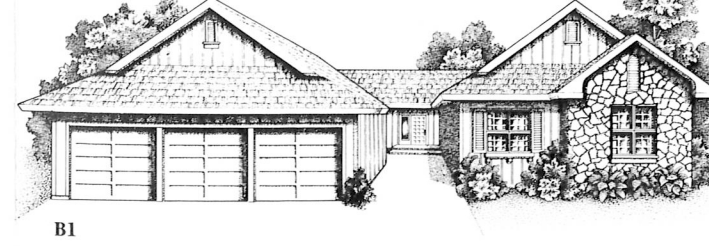
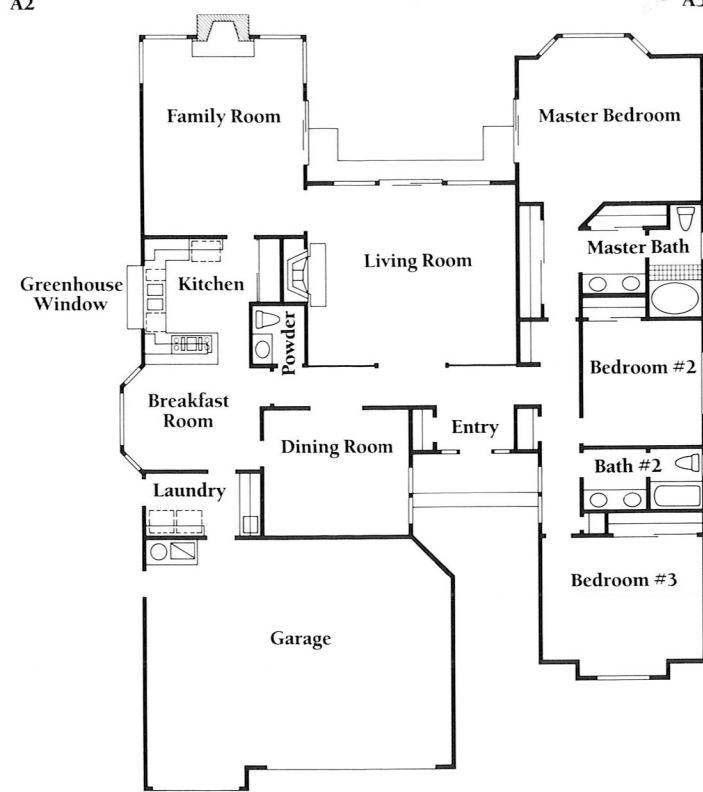
**WOODHILL**  
ESTATES



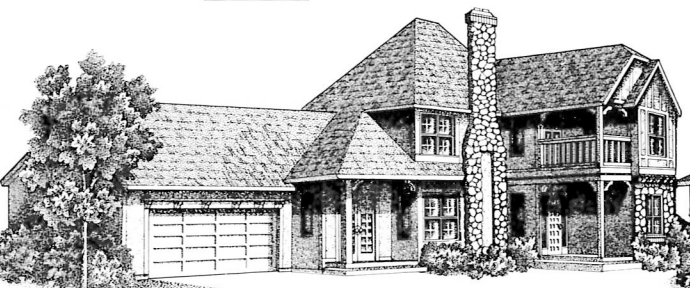
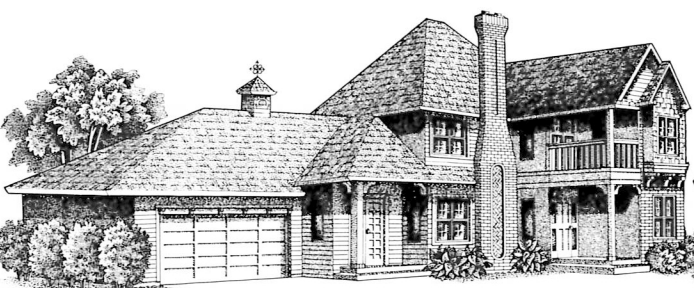
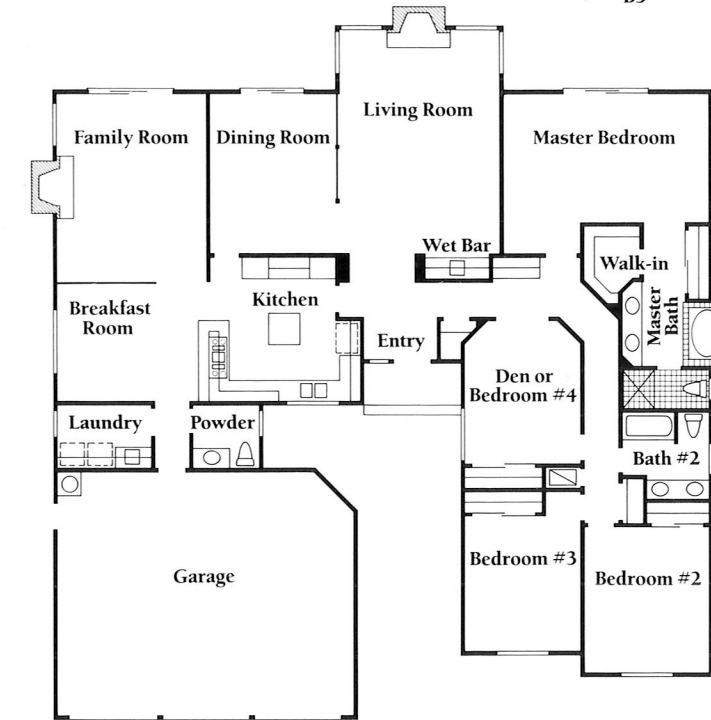




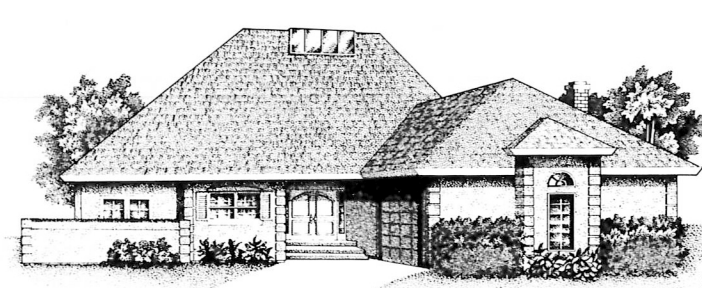
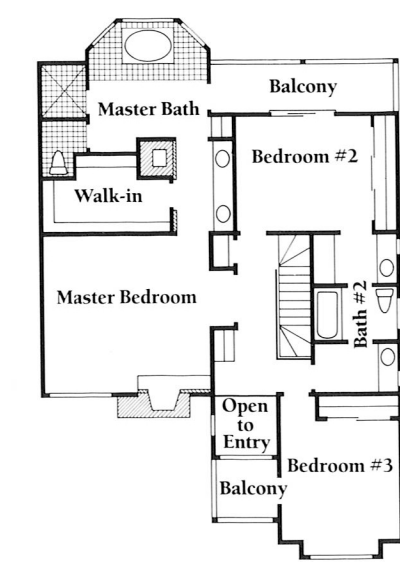
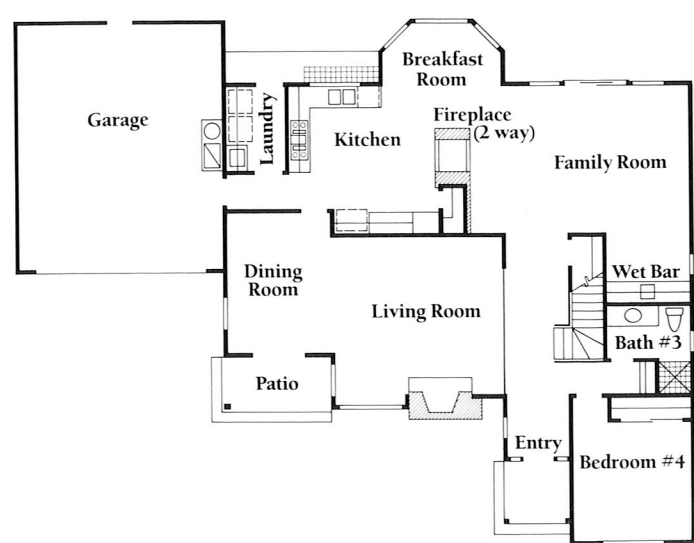
**Plan A The Dover**  
The country lifestyle awaits you in this carefully planned 3 bedroom, 2 1/2 bath home. The charming entry leads to the sunken living room with fireplace. The formal dining room, cheerful breakfast room, and custom kitchen with greenhouse window lend themselves easily to entertaining. The family room with fireplace has sliding glass doors to the terrace beyond. The living room and master bedroom also have sliding glass doors leading to the terrace. The master suite has a bay window, 2 roomy wardrobes and oval tub with shower. With approximately 2,421 square feet, this home is truly a fine example of gracious living.



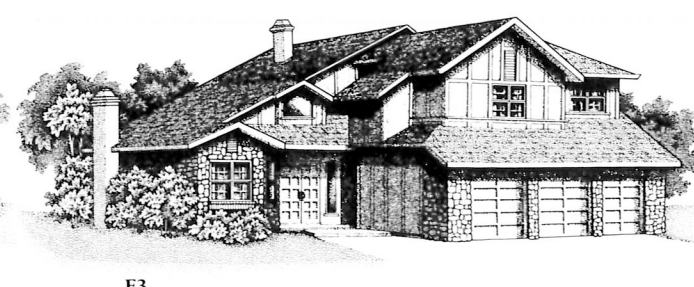
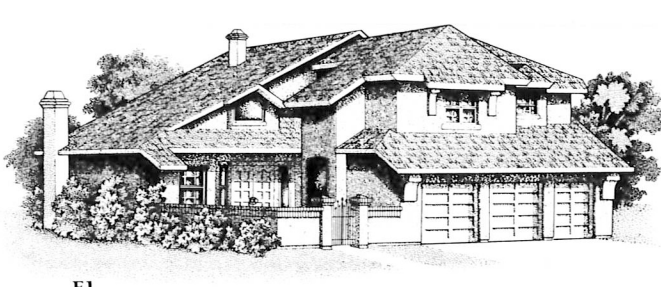
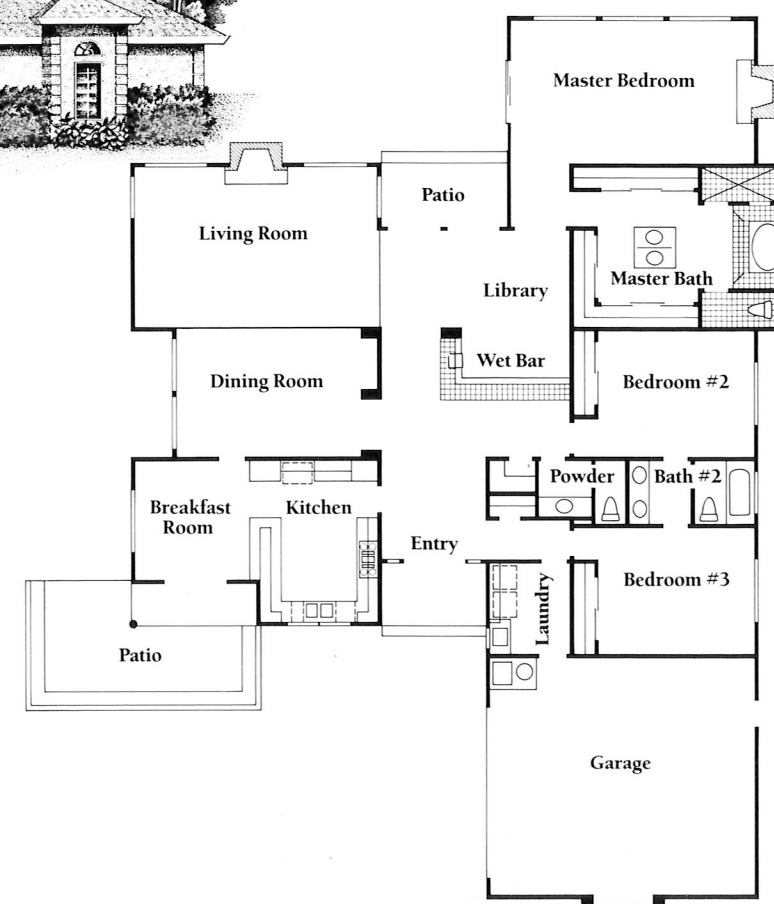
**Plan B The Greystone**  
Designed for entertaining and comfortable family living, this 4 bedroom, 2 1/2 bath home has an abundance of beautifully planned space. The large living room with fireplace and wet bar, formal dining room with sliding glass doors to the outside, custom kitchen and breakfast room eagerly await group activities. The family room has a fireplace and sliding glass to the great outdoors. The master bedroom has a huge walk-in closet, tiled oval tub with separate shower, and sliding glass doors to the outside. With approximately 2,690 square feet, this home offers ample opportunity to enjoy the best of country living.



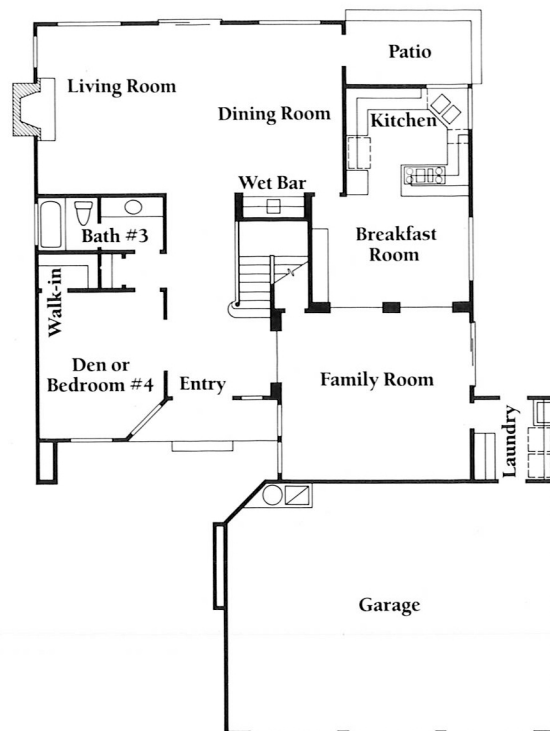
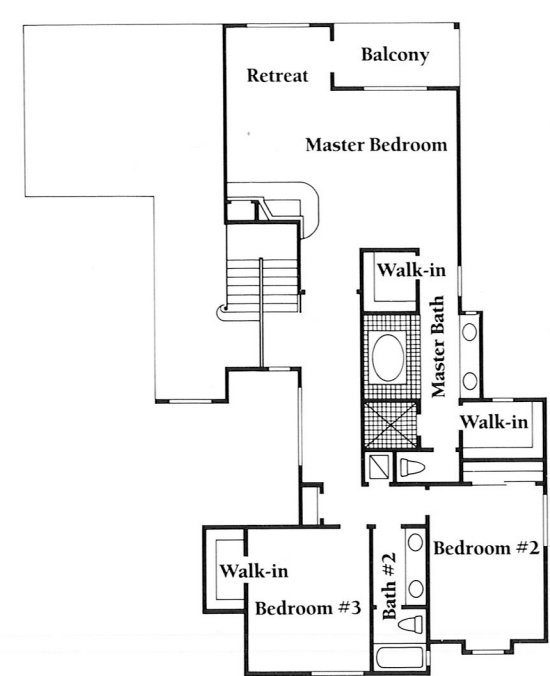
**Plan C The Beresford**  
Reminiscent of an English country manor, this home has been carefully planned to accommodate frequent entertaining while attending to the needs of an active family lifestyle. The sunken living room with fireplace is centrally located to the dining room (with glass doors leading to a secluded patio) and family room. Cleverly separated from the eat-in country kitchen by a 2-way fireplace, the family room also contains a wet bar and sliding glass doors to the outside world. The private master suite has its own fireplace and graciously appointed bathroom with oval tub and separate shower. Three additional bedrooms and 2 baths augment approximately 2,823 square feet of exceptional living space.



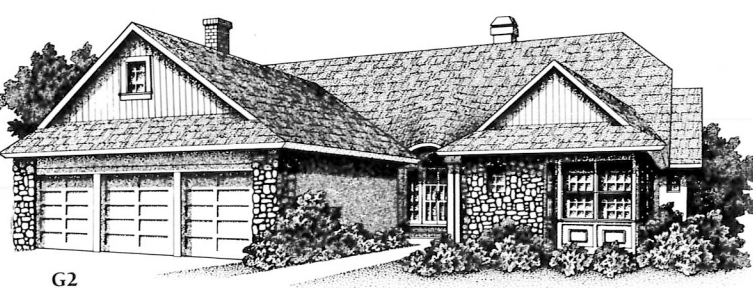
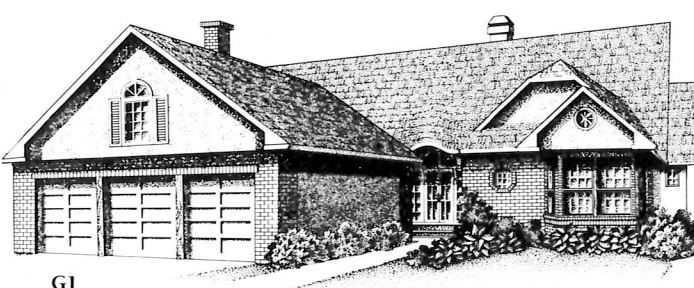
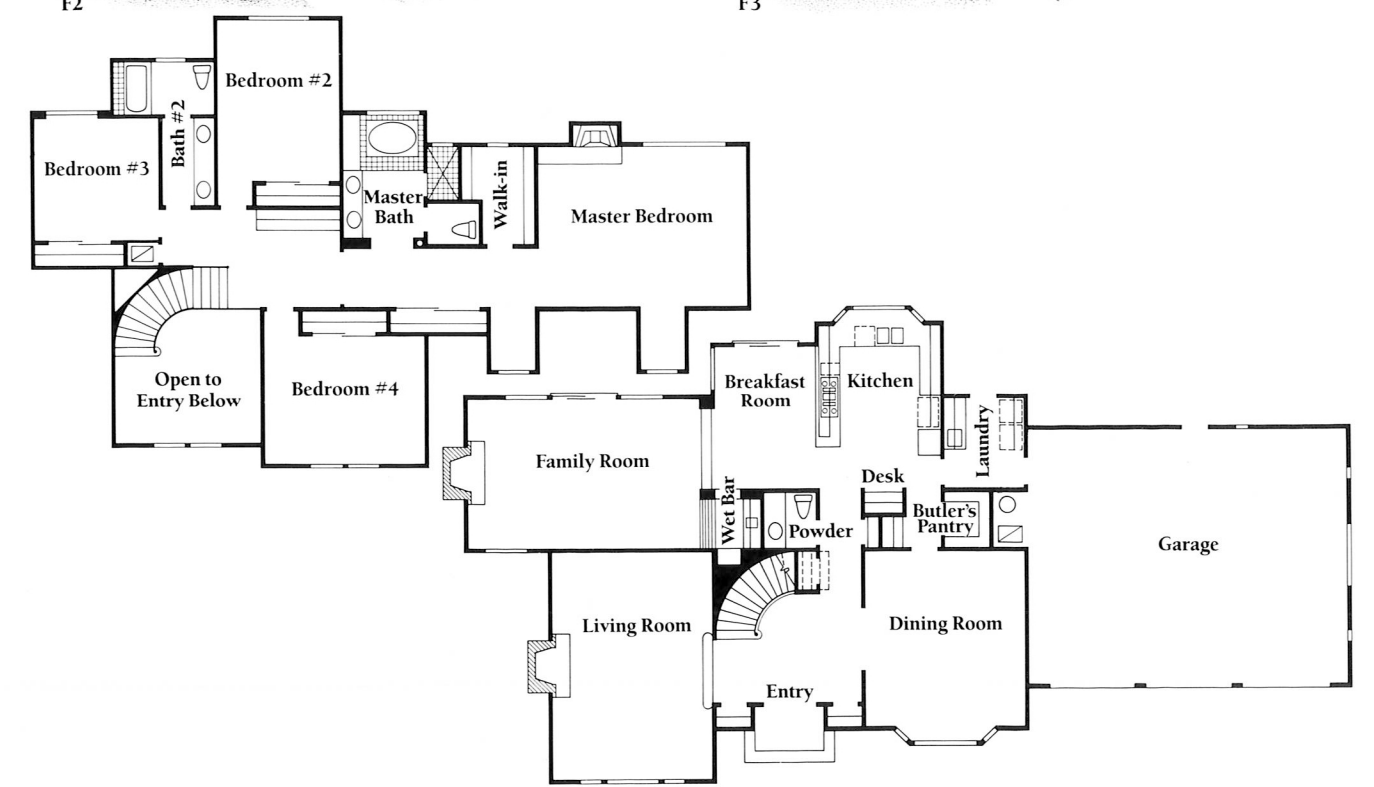
**Plan D The Berkshire**  
The diverse layout of this 3 bedroom, 2 1/2 bath petit chateau offers a uniquely sophisticated living plan. The entrance gallery leads to the dining room and sunken living room with fireplace. The library contains a wet bar, tiled service counter, French doors to the outside, and also serves as an anteroom to the master suite. The master bedroom contains a more than ample dressing area complete with mirrored wardrobes, tiled oval tub with separate shower, fireplace and sliding glass doors leading to the lawn beyond. The gourmet kitchen's breakfast room has French doors leading to a porch—perfect for early morning coffee. With approximately 2,872 square feet of space, this intricately designed home provides endless possibilities for comfort in the French country style.



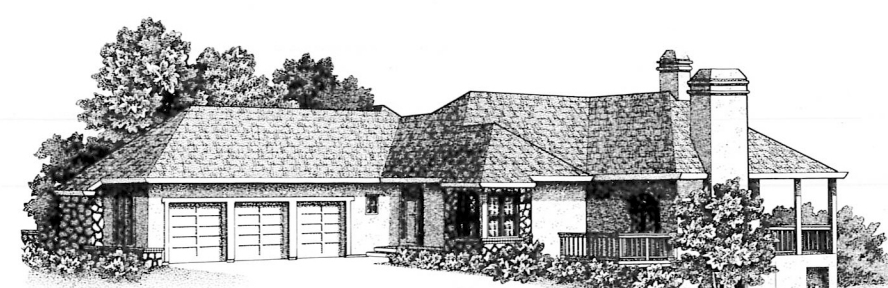
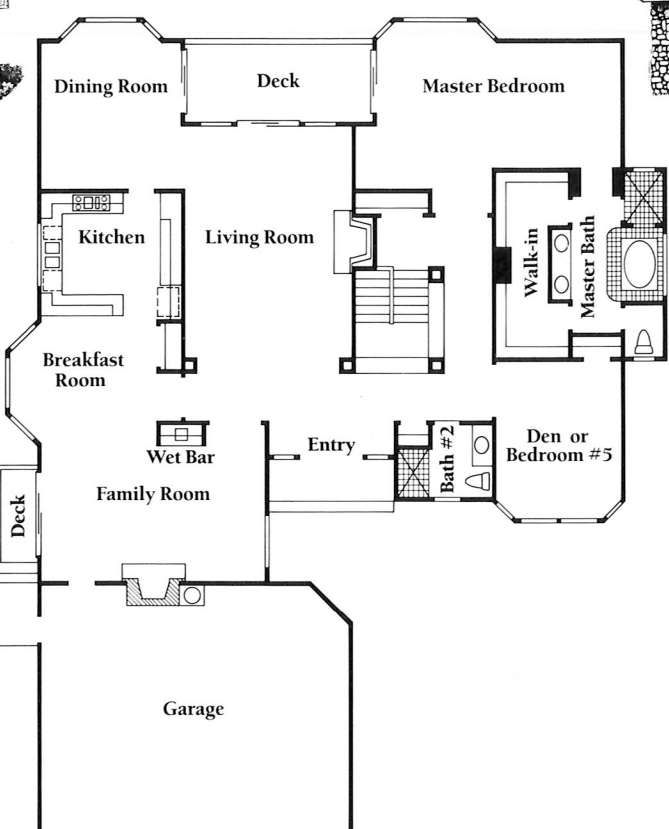
**Plan E The Huntingting**  
A relaxing lifestyle awaits in this 4 bedroom, 3 bath executive retreat. The living room with fireplace and dining room share sliding glass doors to the outside. The dining room also has a wet bar and French door leading to a secluded patio. The state-of-the-art kitchen, breakfast room and family room provide excellent entertaining space with sliding glass doors leading from the family room to outdoor diversions. A den or fourth bedroom plus bath completes the first floor. The second floor master suite has its own sitting room with fireplace, his and hers walk-in closets, tiled oval tub and separate shower. There are 2 additional family bedrooms plus bath on this floor. With approximately 3,088 square feet, this is truly a castle.



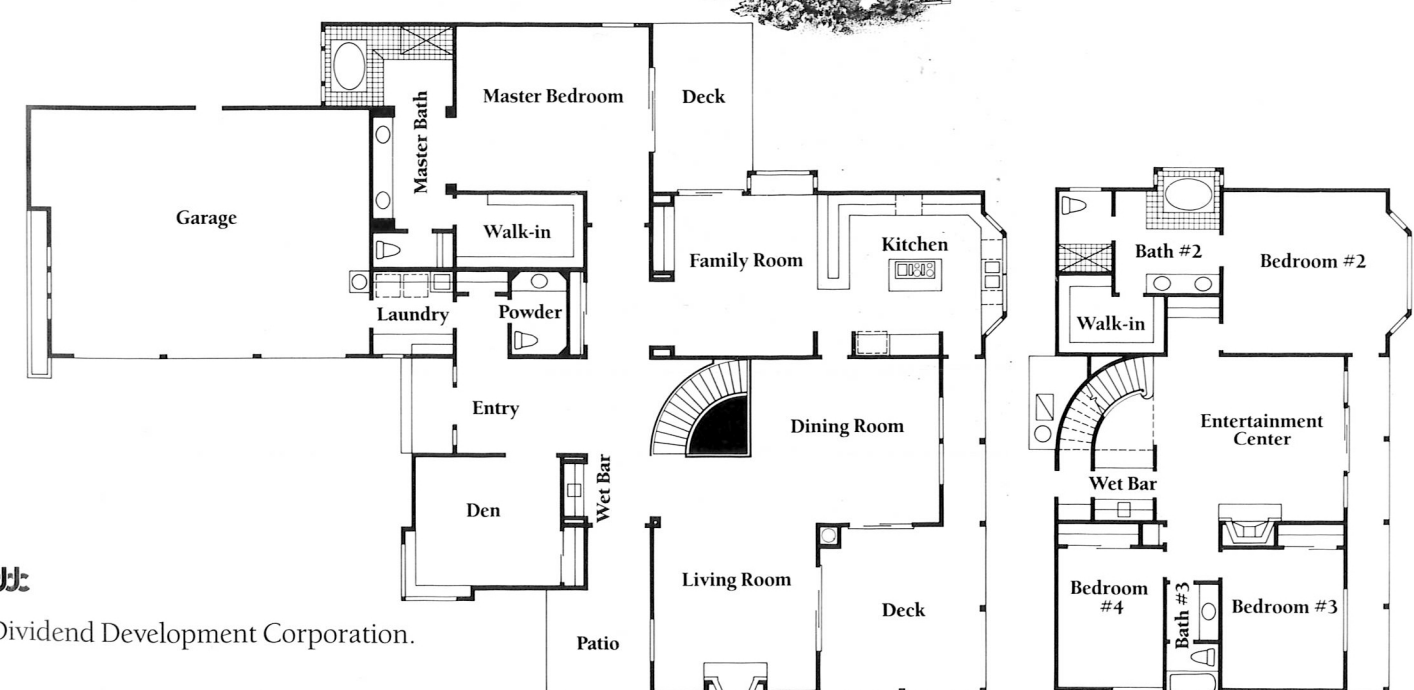
**Plan F The Bedford**  
No words can express the exceptional qualities of this opulently appointed 4 bedroom, 2 1/2 bath home. From the entrance hall with curved staircase, to the sunken living room with fireplace and formal dining room, an air of sophistication prevails. The well-equipped kitchen has a butler's pantry to facilitate service in the dining room, a built-in desk for organizing social activities, and a breakfast room with sliding glass doors to the outside. The family room's fireplace, wine closet, wet bar and sliding glass doors offer still more entertaining possibilities. The sequestered master suite on the second floor allows for relaxing private moments with a fireplace, large walk-in closet, tiled oval tub and separate shower. Three more family bedrooms plus a bath are also on this floor. This home comprises approximately 3,409 square feet of luxury living.



**Plan G The Hampton**  
This breathtaking 5 bedroom, 3 bath home provides approximately 3,769 square feet of exceptional living space on 2 levels. The main living area is comprised of a living room with fireplace and dining room—both with sliding glass doors leading to a large wood deck. The custom kitchen has a service island to the breakfast room. The family room has a fireplace, wet bar and sliding glass doors to another wood deck. The sumptuously appointed master suite with bath, another bedroom and bath are also on this level. Three additional family bedrooms, bath and large entertainment center with sliding glass doors to the outside complete the lower level of this magnificent family home.



**Plan H The Stratford**  
The magnificent entry of this 2 level, 4 bedroom, 3 1/2 bath home sets the tone for gracious entertaining with a wet bar. French doors to a wooden deck and a gracefully curved staircase leading to the lower level. The living room with fireplace and dining room both have sliding glass doors leading to a large wooden deck. The custom kitchen has a French door to the deck, thus providing easy access for dining al fresco. The family room's sliding glass doors lead to yet another wooden deck shared with the master suite. The huge walk-in wardrobe, ample dressing area, oval tub and separate shower make this bedroom the perfect hideaway. A den and powder room are also on this floor. The lower level contains another bedroom suite, 2 family bedrooms, bath and entertainment center with wine closet, wet bar, fireplace and sliding glass doors to the outside. With approximately 3,896 square feet, this is living on a grand scale.



Artist's Concept. Landscaping will vary.



Woodhill Estates is a project of Dividend Development Corporation.