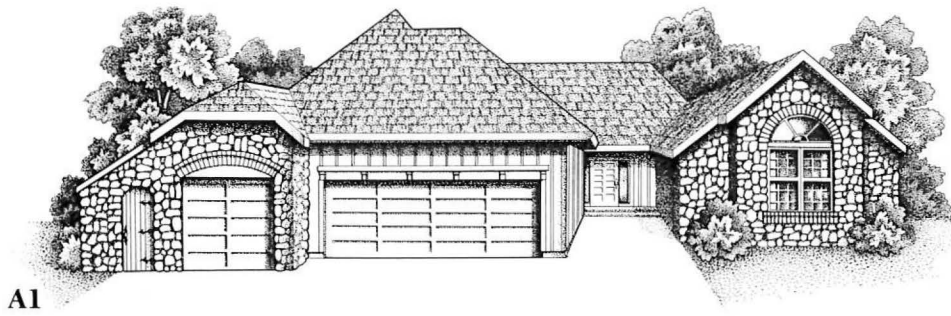


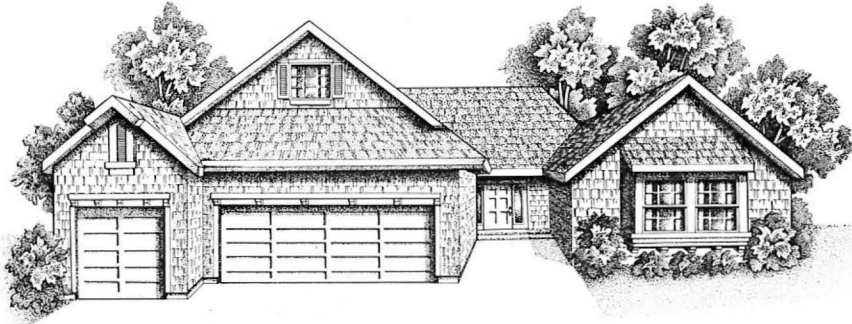
An aerial photograph of a residential development. In the foreground, there is a hillside with dry, brownish grass. Below this, a paved road runs horizontally. To the left of the road, several large, multi-story houses with dark roofs and light-colored siding are visible. To the right of the road, there is a tennis court with a green surface and a surrounding fence. The middle ground is filled with numerous tall, dark green trees. In the background, a vast valley stretches out, showing a dense forest of trees and a distant city skyline under a clear blue sky. The text 'WOODHILL ESTATES' is overlaid in the upper center of the image.

WOODHILL
E S T A T E S

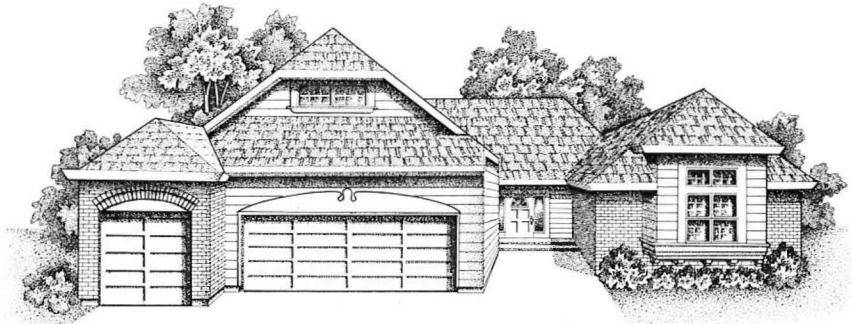
BY DIVIDEND



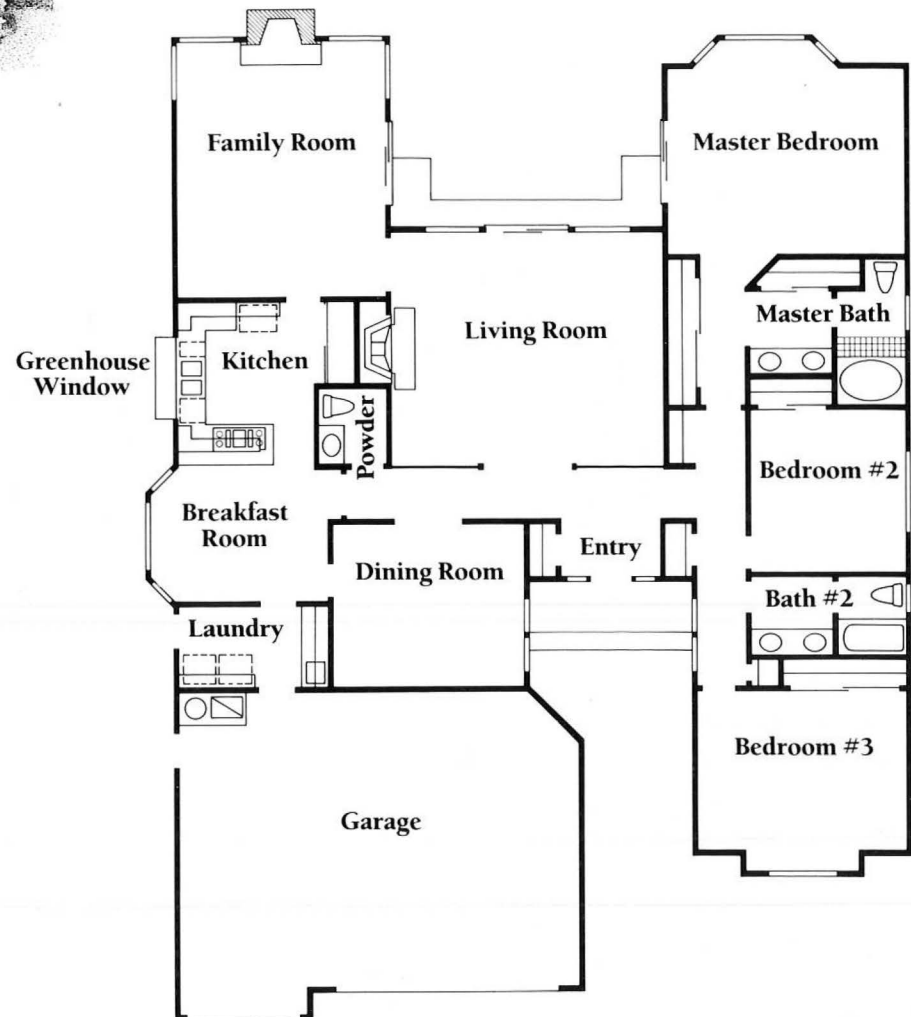
A1



A2

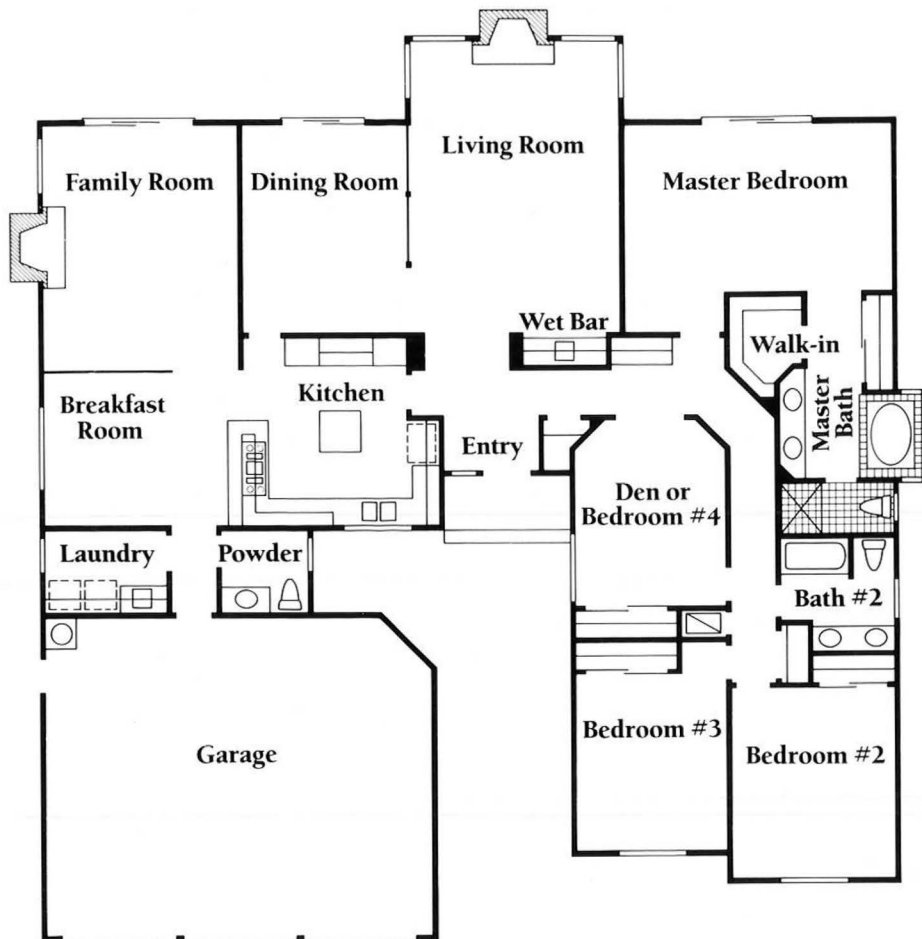


A3

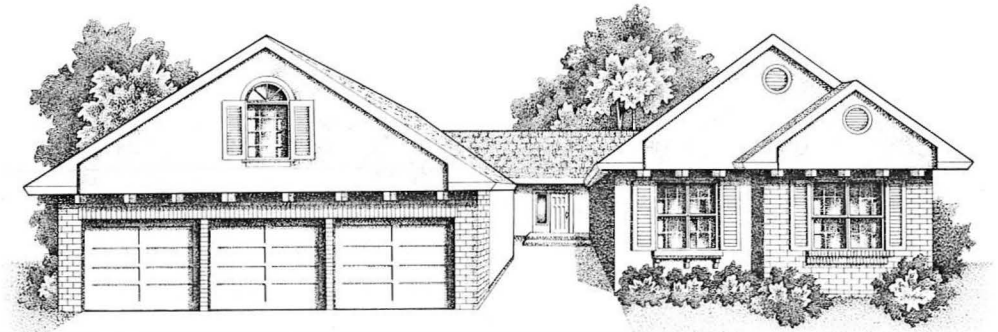


Plan A The Dover

The country lifestyle awaits you in this carefully planned 3 bedroom, 2½ bath home. The charming entry leads to the sunken living room with fireplace. The formal dining room, cheerful breakfast room, and custom kitchen with greenhouse window lend themselves easily to entertaining. The family room with fireplace has sliding glass doors to the terrace beyond. The living room and master bedroom also have sliding glass doors leading to the terrace. The master suite has a bay window, 2 roomy wardrobes and oval tub with shower. With approximately 2,421 square feet, this home is truly a fine example of gracious living.



B1



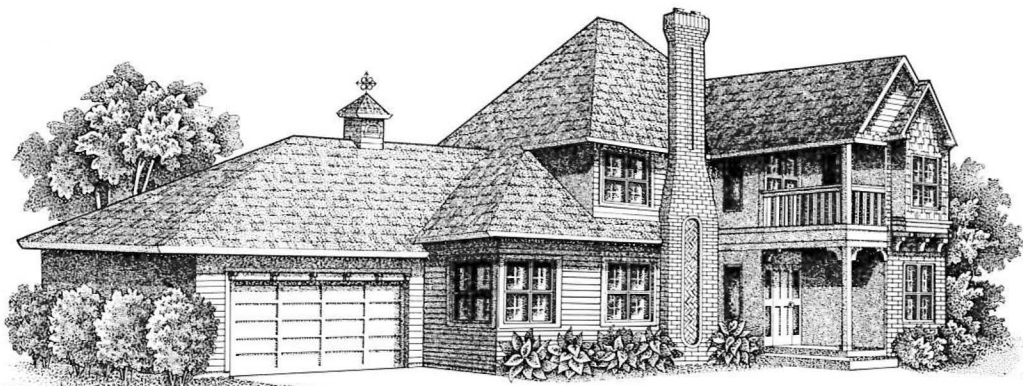
B2



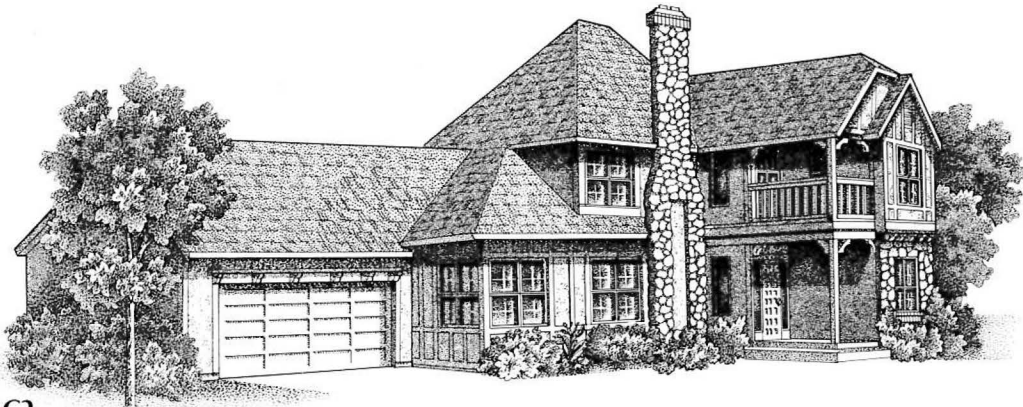
B3

Plan B The Greystone

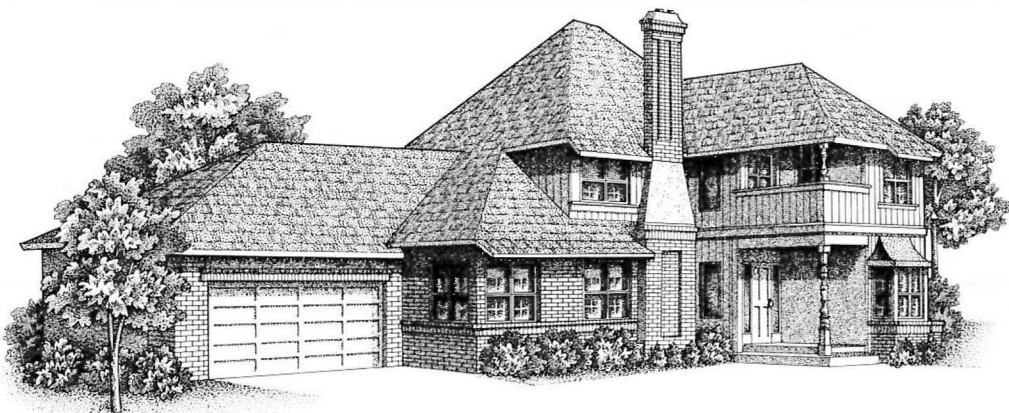
Designed for entertaining and comfortable family living, this 4 bedroom, 2½ bath home has an abundance of beautifully planned space. The large living room with fireplace and wet bar, formal dining room with sliding glass doors to the outside, custom kitchen and breakfast room eagerly await group activities. The family room has a fireplace and sliding glass to the great outdoors. The master bedroom has a huge walk-in closet, tiled oval tub with separate shower, and sliding glass doors to the outside. With approximately 2,690 square feet, this home offers ample opportunity to enjoy the best of country living.



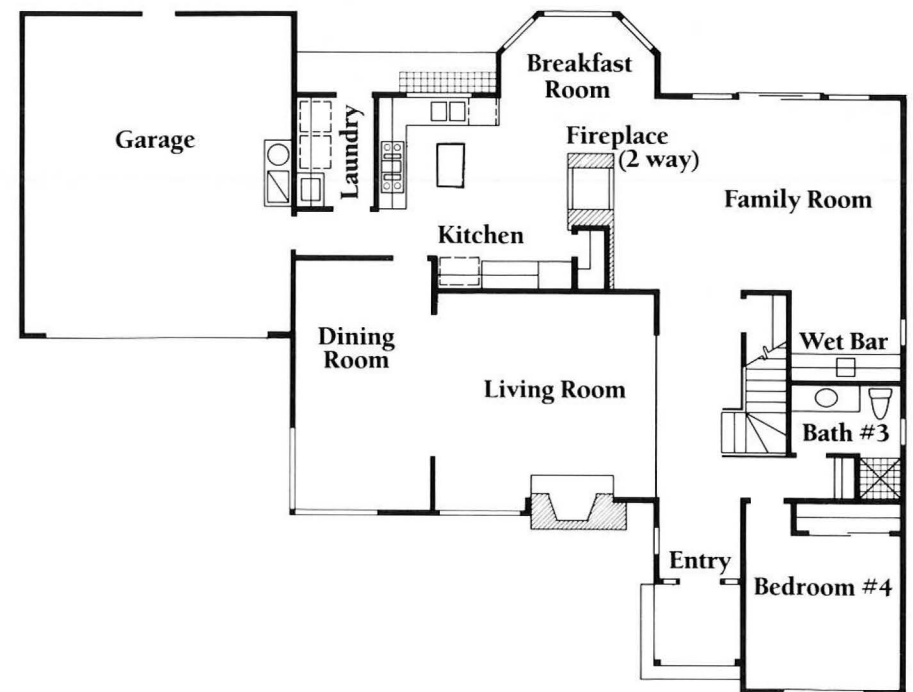
C1



C2

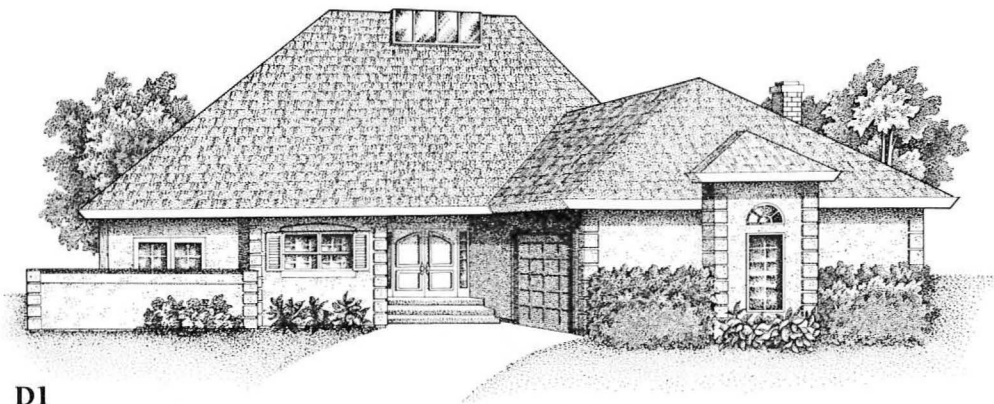


C3

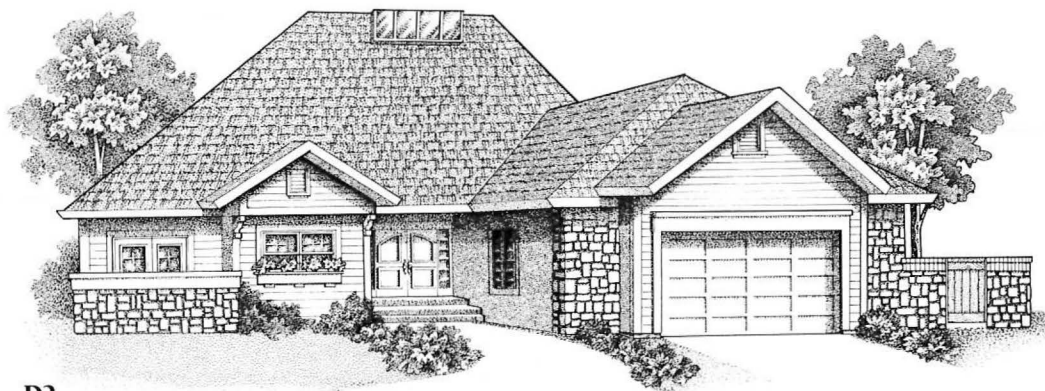


Plan C The Beresford

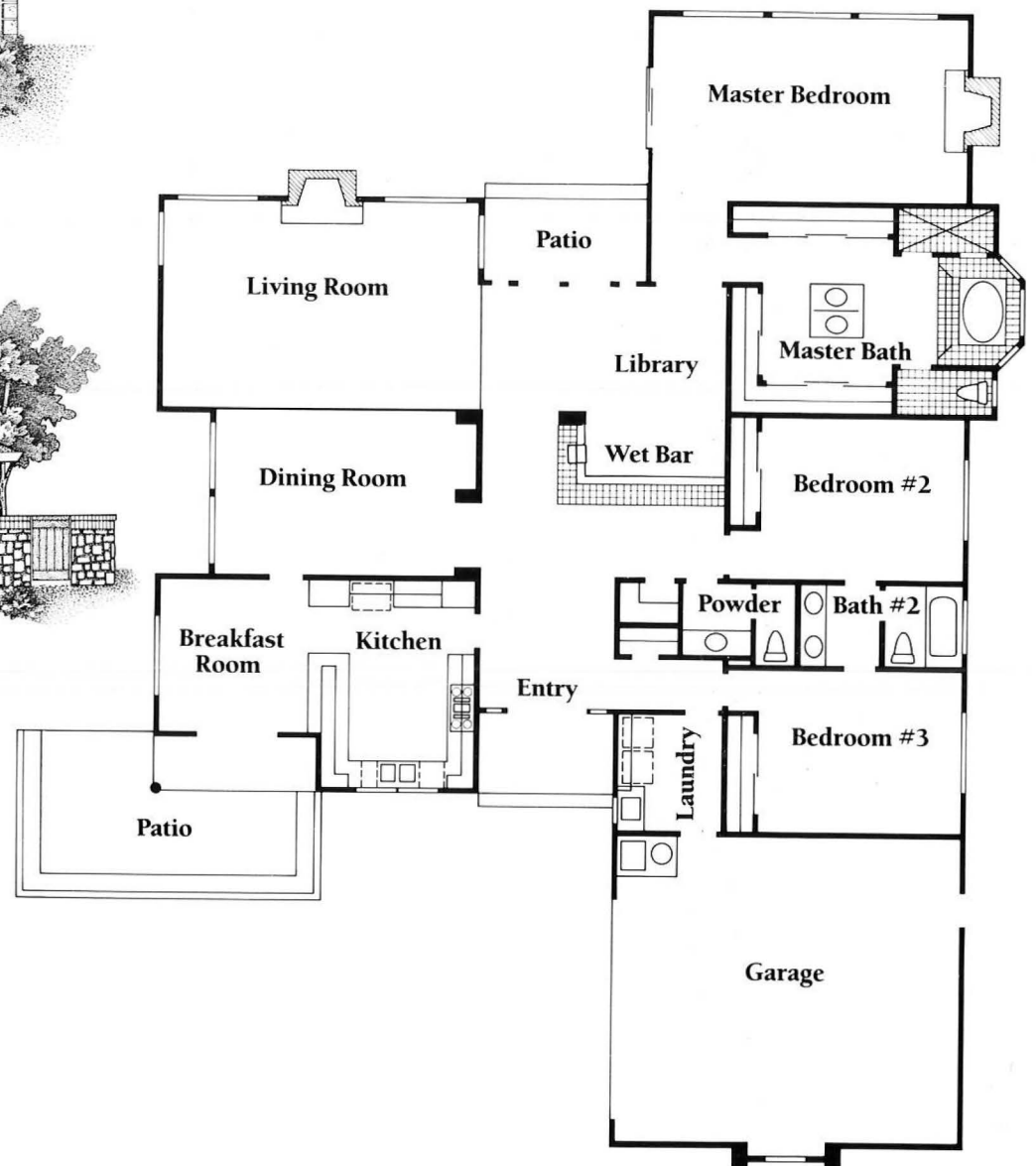
Reminiscent of an English country manor, this home has been carefully planned to accommodate frequent entertaining while attending to the needs of an active family lifestyle. The sunken living room with fireplace is centrally located to the dining room and family room. Cleverly separated from the eat-in country kitchen by a 2-way fireplace, the family room also contains a wet bar and sliding glass doors to the outside world. The private master suite has its own fireplace and graciously appointed bathroom with oval tub and separate shower. Three additional bedrooms and 2 baths augment approximately 2,823 square feet of exceptional living space.



D1



D2

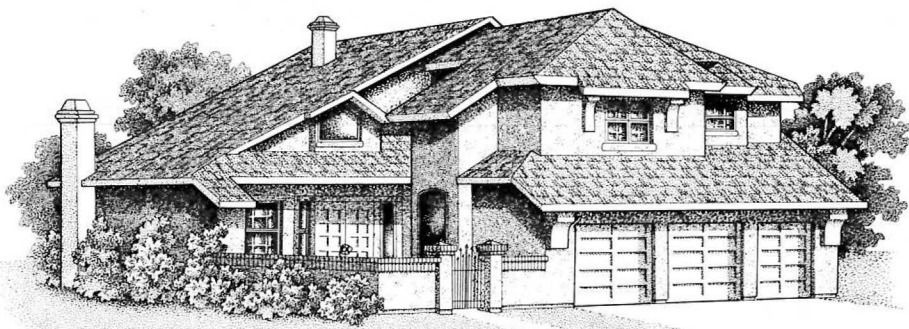


Plan D The Berkshire

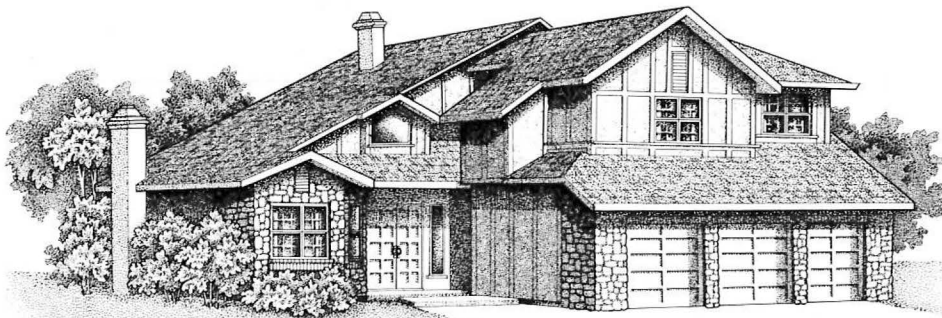
The diverse layout of this 3 bedroom, 2½ bath petit chateau offers a uniquely sophisticated living plan. The entrance gallery leads to the dining room and sunken living room with fireplace. The library contains a wet bar, tiled service counter, French doors to the outside, and also serves as an anteroom to the master suite. The master bedroom contains a more than ample dressing area complete with mirrored wardrobes, tiled oval tub with separate shower, fireplace and sliding glass doors leading to the lawn beyond. The gourmet kitchen's breakfast room has French doors leading to a porch—perfect for early morning coffee. With approximately 2,872 square feet of space, this intricately designed home provides endless possibilities for comfort in the French country style.

Plan E The Huntington (Special)

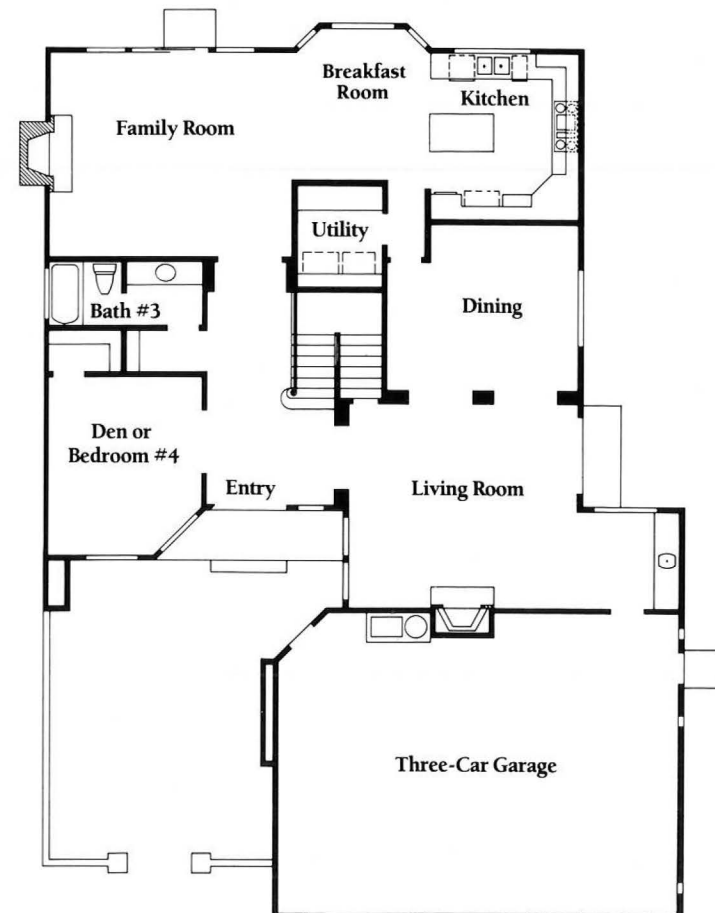
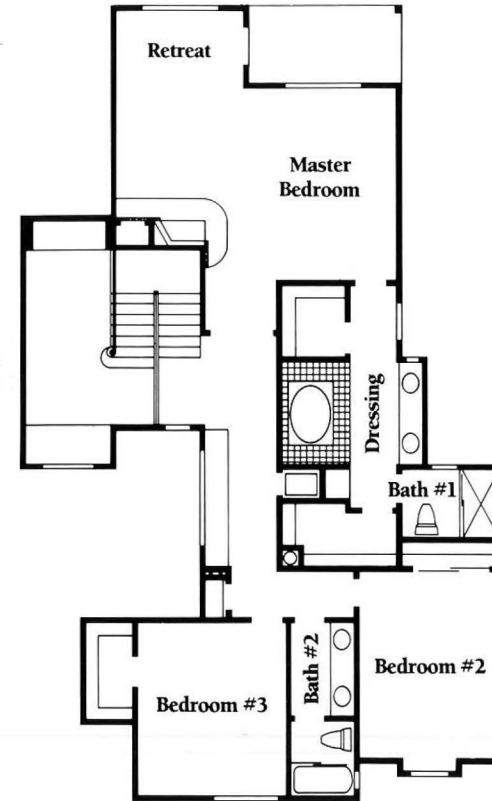
A family home with exceptional entertainment areas has never been grander than this 4 bedroom, 3 bath special version of our E plan. French doors lead to the yard from the spacious sunken living room with fireplace and convenient wet bar. The formal dining room, which opens onto the living room, has access to the expanded state-of-the-art kitchen. The breakfast room and family room with fireplace are also perfect for more informal entertaining. The second floor master suite features sitting room with cozy fireplace, his and hers walk-in closets, and oval tiled bath. The fourth bedroom on the first floor can also serve as a den, library or computer room for smaller families. A great way to live with approximately 3,177 square feet of living space.



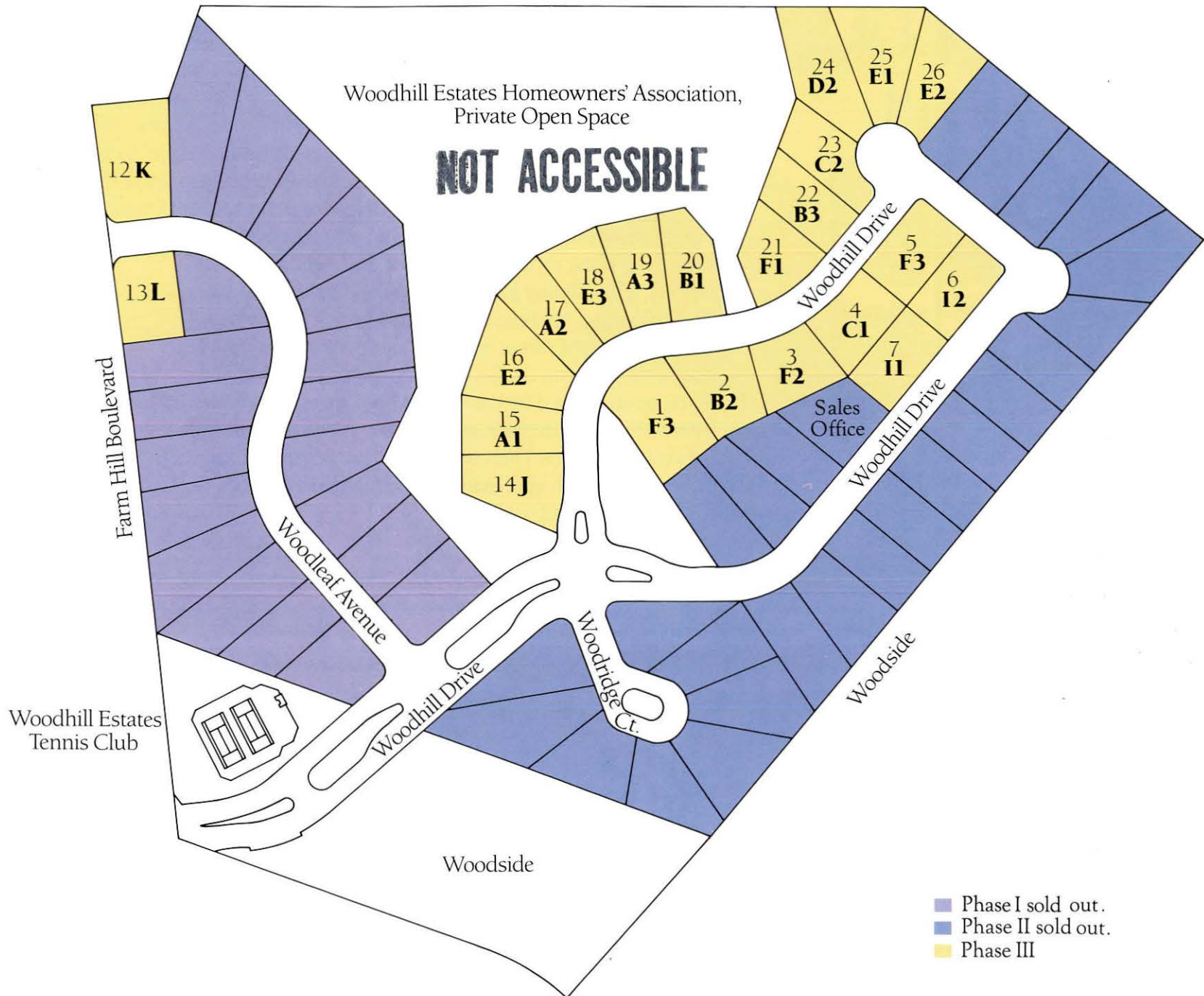
E1

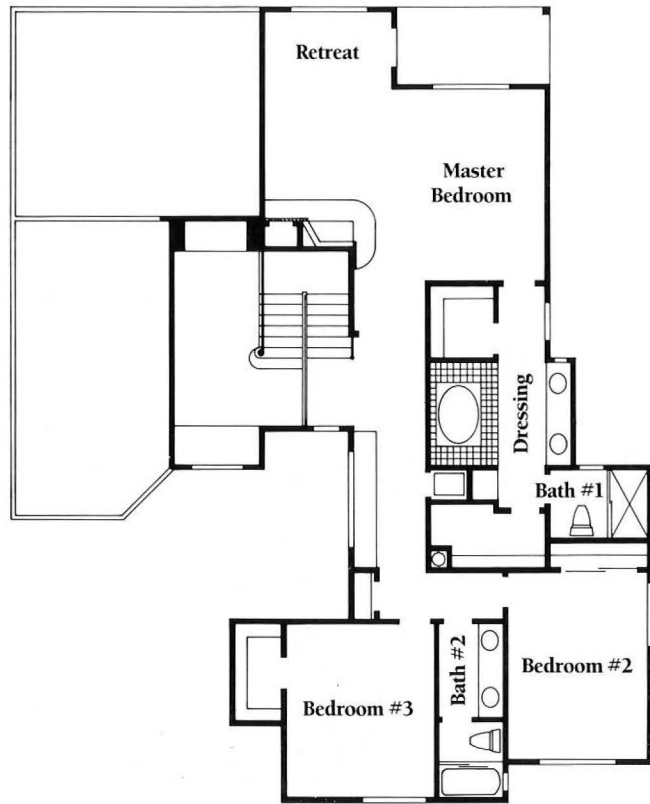


E3



WOODHILL
ESTATES

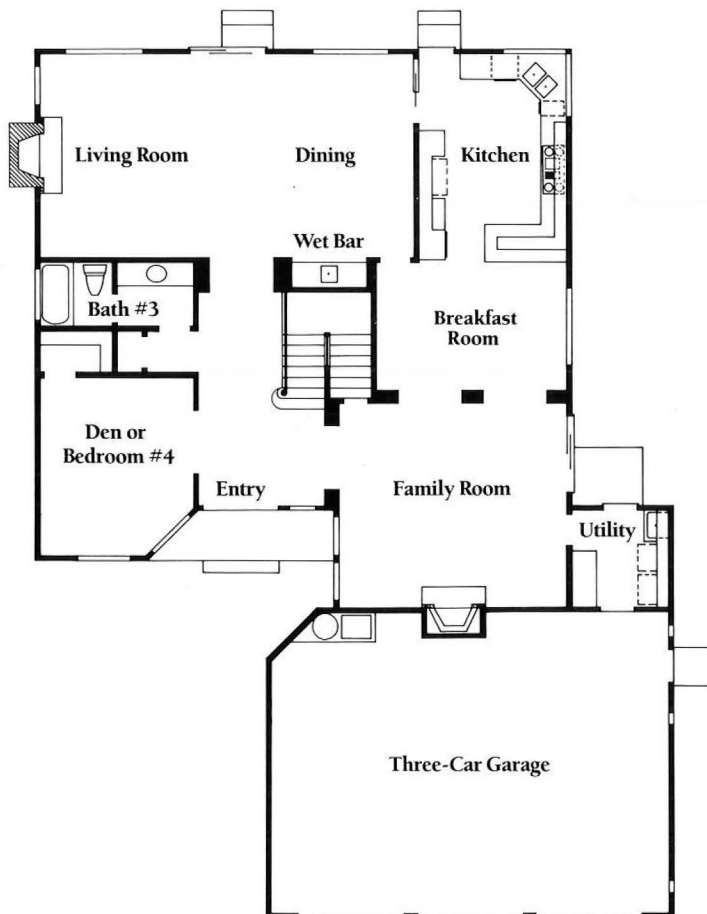




E2

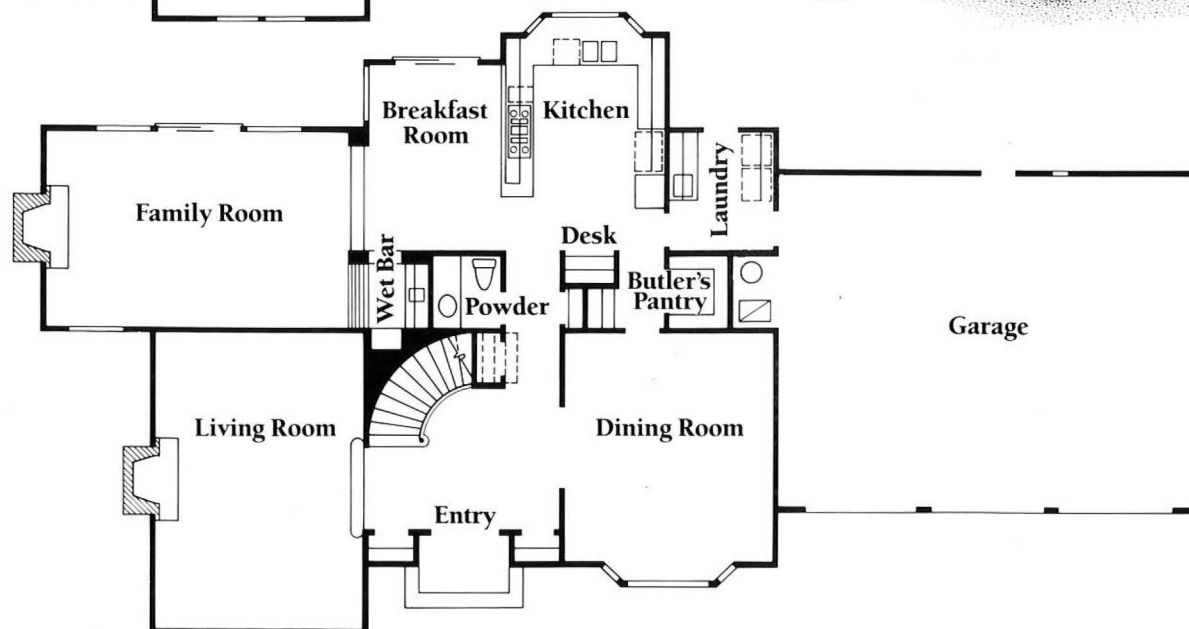
Plan E **The Huntington** (Revised)

This upgrading of our previous Plan E is a wonder to behold. There are 4 beautiful bedrooms and 3 baths designed for great living. The living room with fireplace, and dining room with wet bar, share sliding glass doors to the outside. The state-of-the-art kitchen, breakfast room and adjacent sunken family room provide excellent entertaining space with sliding glass doors leading from the family room to outdoor diversions. You'll be enchanted by the second floor master suite with its own retreat and fireplace, and dressing room with his and hers walk-in closets. There are 2 additional bedrooms plus bath on this floor. With approximately 3,160 square feet you'll live in unparalleled comfort.



Plan F The Bedford

No words can express the exceptional qualities of this opulently appointed 4 bedroom, 2½ bath home. From the entrance hall with curved staircase, to the sunken living room with fireplace and formal dining room, an air of sophistication prevails. The well-equipped kitchen has a butler's pantry to facilitate service in the dining room, a built-in desk for organizing social activities, and a breakfast room with sliding glass doors to the outside. The family room's fireplace, wine closet, wet bar and sliding glass doors offer still more entertaining possibilities. The sequestered master suite on the second floor allows for relaxing private moments with a fireplace, large walk-in closet, tiled oval tub and separate shower. Three more family bedrooms plus a bath are also on this floor. This home comprises approximately 3,409 square feet of luxury living.



F1



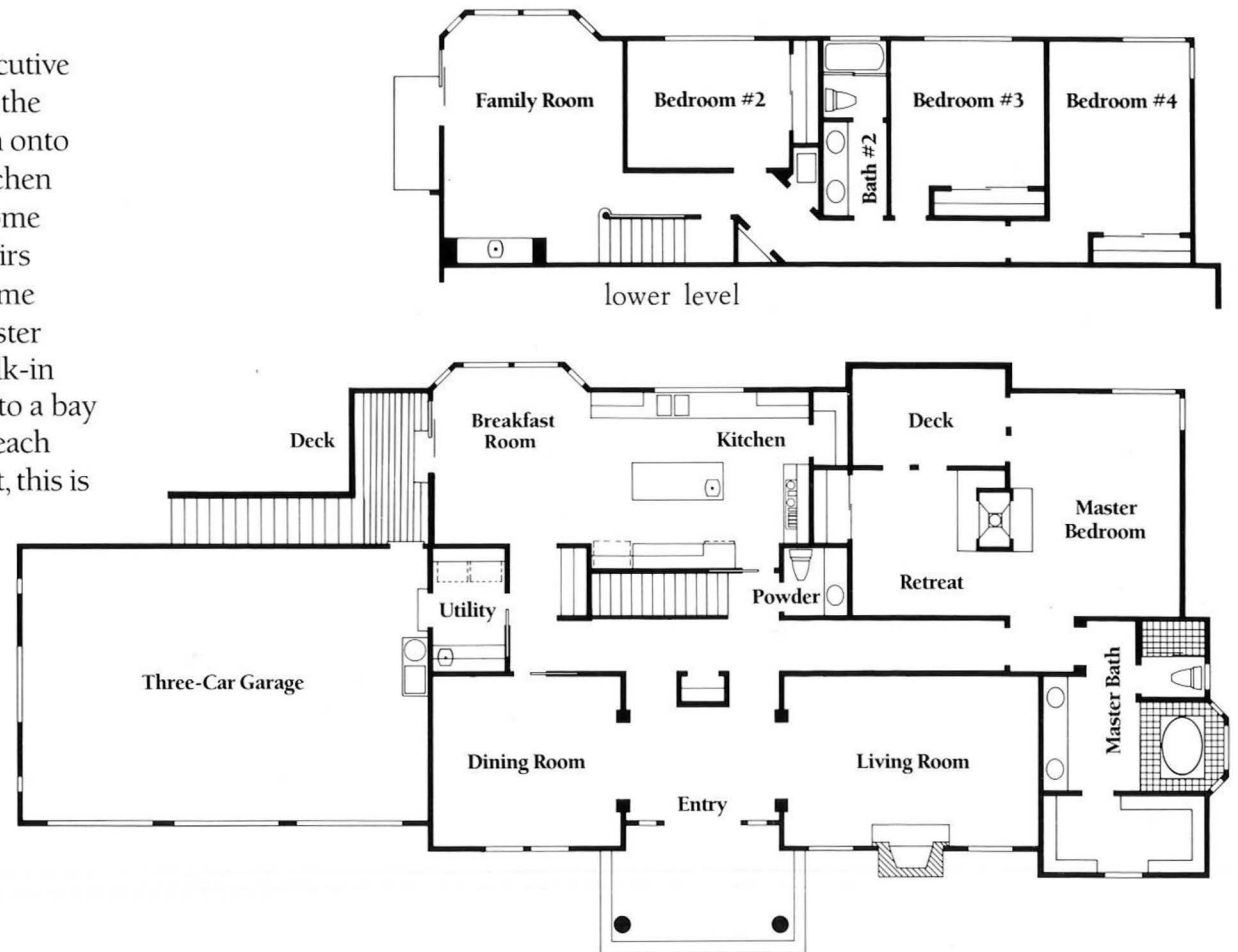
F2



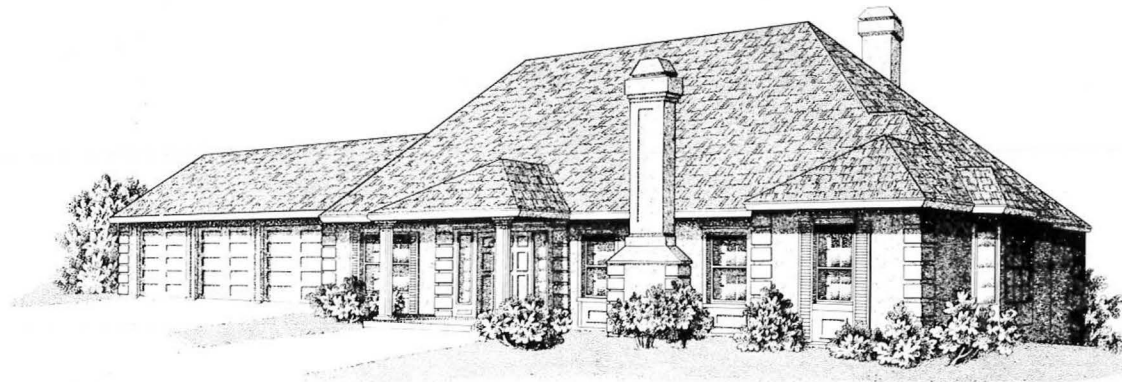
F3

Plan I The Sheffield

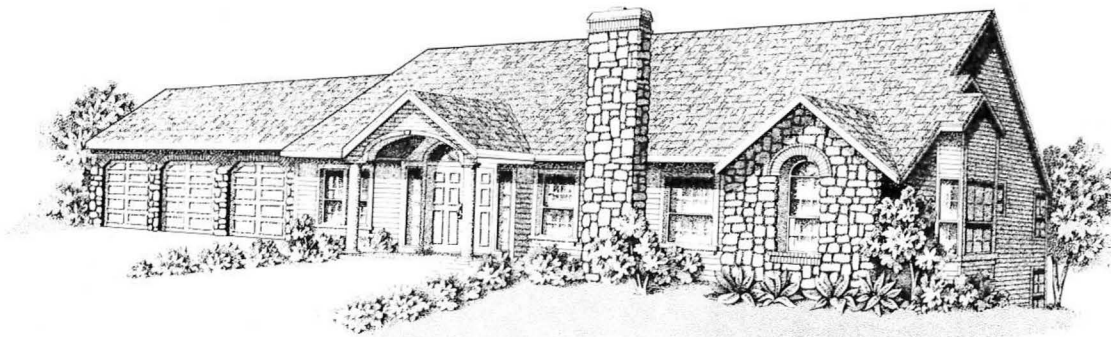
A relaxing lifestyle awaits in this 4 bedroom, 2½ bath executive retreat. Carefully planned for comfort and convenience, the living room with fireplace and formal dining room open onto the gracious entry area. The spacious state-of-the-art kitchen with island and adjacent breakfast room serve as a welcome gathering spot for informal meals or snacks. The downstairs family room is an excellent place to keep the pool or game table ready and entertain your guests. The first floor master suite has its own sitting room with a 2-way fireplace, walk-in closet, tiled shower and dramatic, raised oval tub next to a bay window. The remaining three bedrooms are downstairs, each with its own bath. With approximately 3,168 square feet, this is truly a castle.

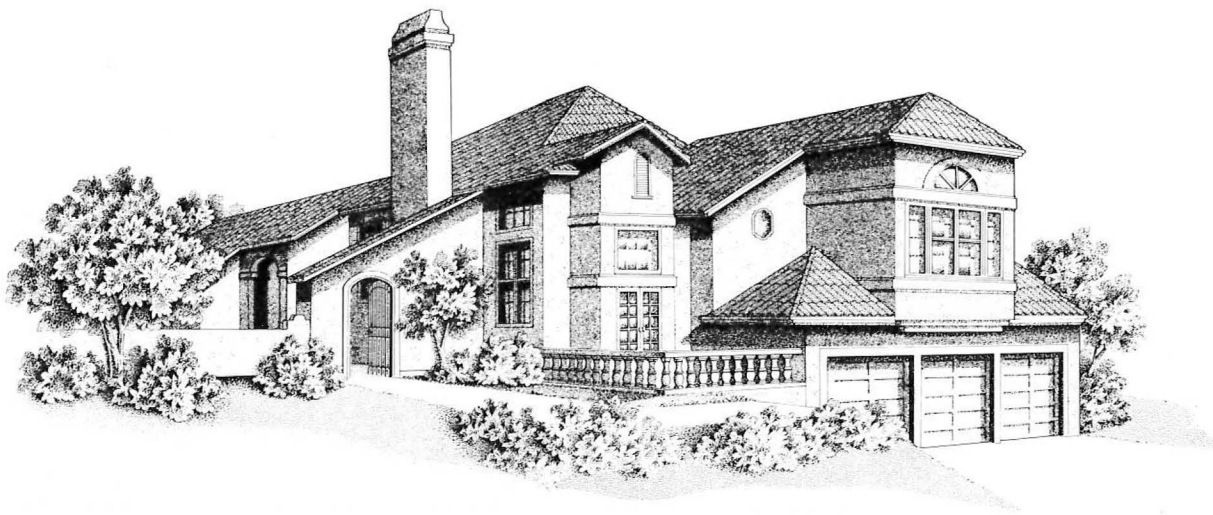


11

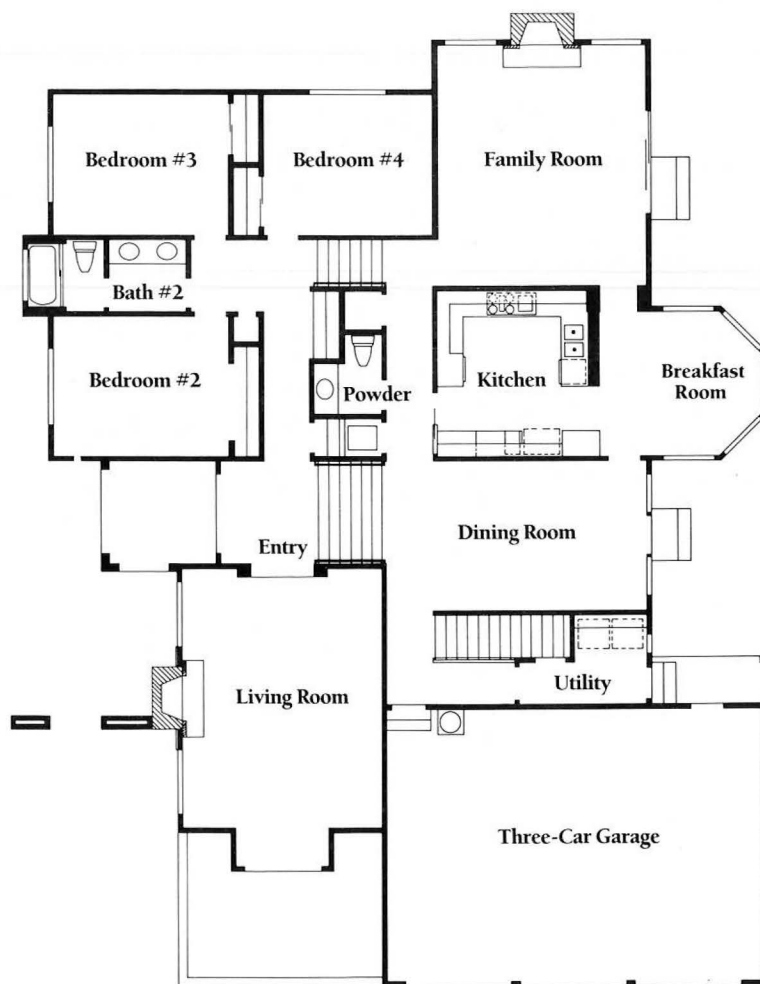


12





J1



Plan J The Yorkshire

A truly unique 4 bedroom, 2½ bath home featuring the best in luxurious living. The living room is the centerpiece of comfort with its fireplace and French doors leading onto the patio. The elegant formal dining room on a lower level is approached by stairs off the entry. The breakfast room with bay window and gourmet kitchen with its many state-of-the-art appliances is conveniently located next to the large family room with fireplace. The second floor is taken up exclusively by the private master suite, sitting room and bath with dressing area, oval tub and tiled shower. A distinctive retreat in a beautiful family home with approximately 3,078 square feet.





Woodhill Estates is a project of Dividend Development Corporation 