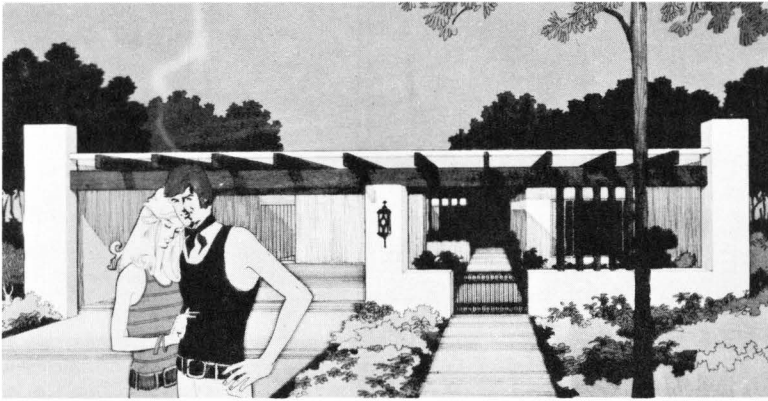


# Townhouses

# Plan 5-S (1975)

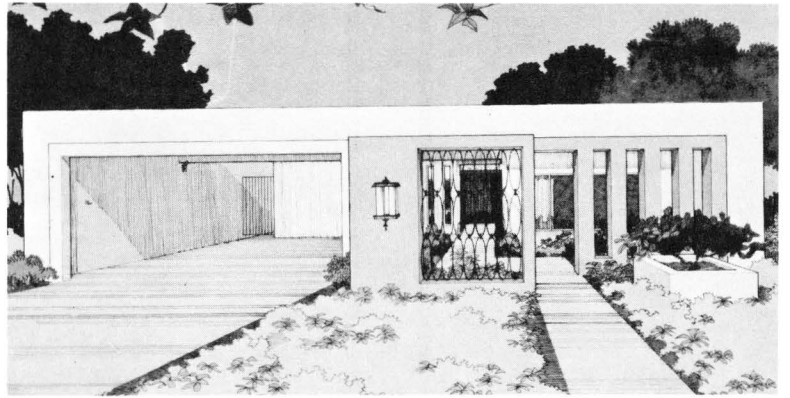
A beautiful front entrance greets you and leads the way to a large entry hall which provides easy access to all rooms. Marvel at the luxurious living room with its adjoining dining area. Just steps away is the spacious kitchen and family room which look out onto a front garden area. Uniquely, this 2-bedroom 2-bath home offers a king-

sized master bedroom suite highlighted by a skylight ceiling, mirrored walls and a separate dressing area. Even the shower and tub are separated for greater "convenience"—the byword in this beautiful plan.

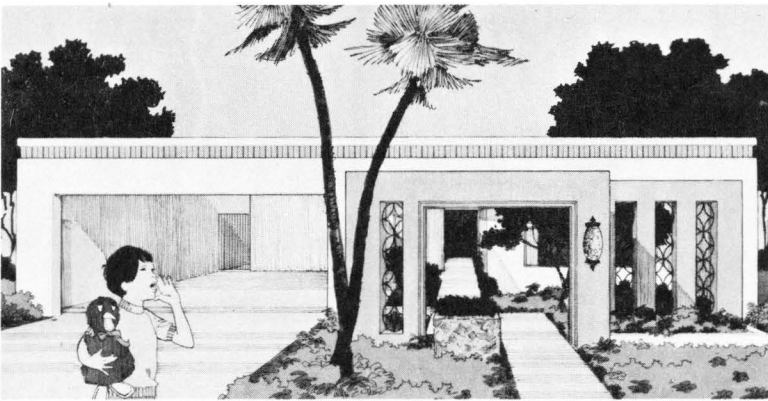


**A**

\$68900

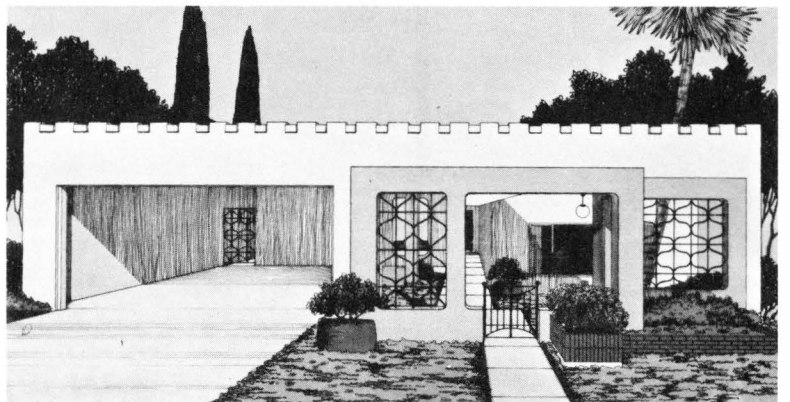


**\$69000 B**



**C**

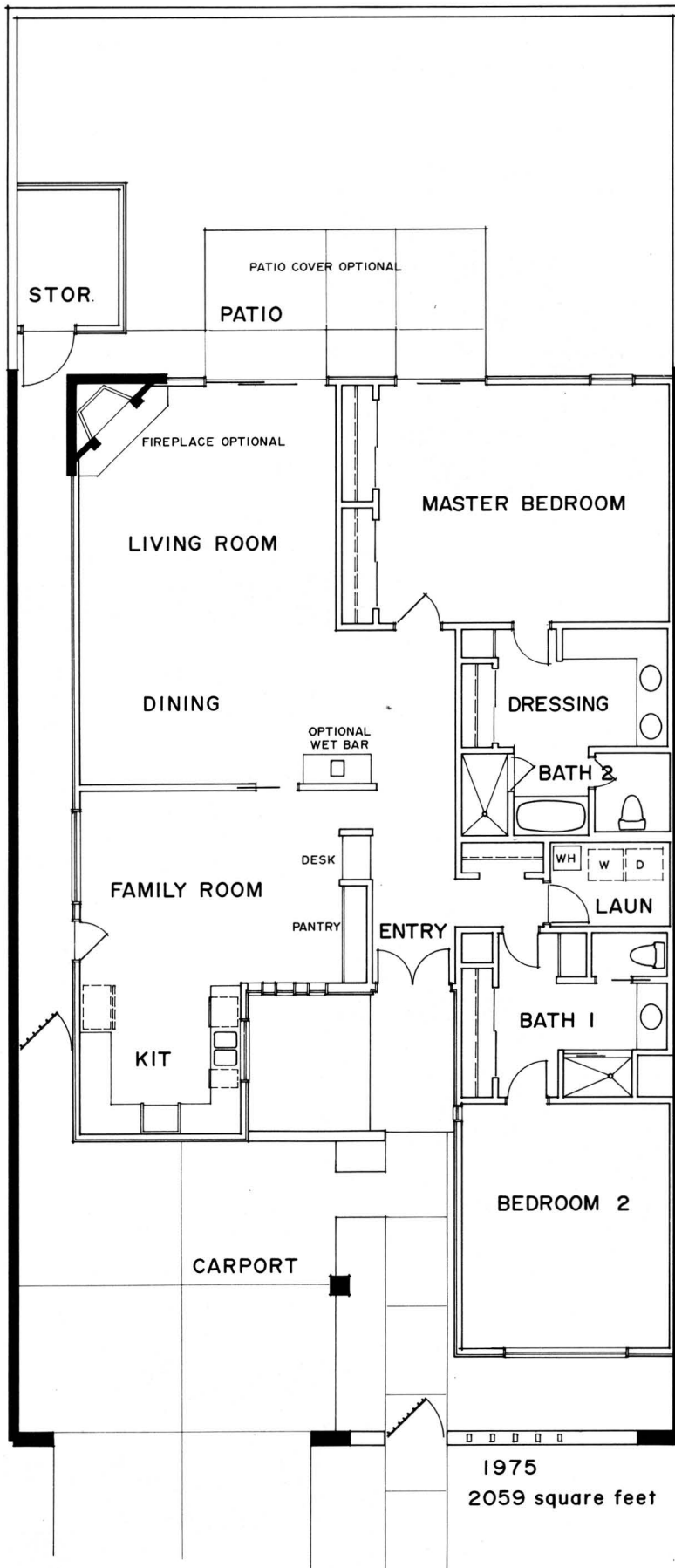
\$69400



**\$69300**

**D**

# Plan 5-S (1975)



Sands Scottsdale-Indian Bend & Pima Road-Scottsdale, Arizona

# Townhouses

# Plan 6-S (1975)

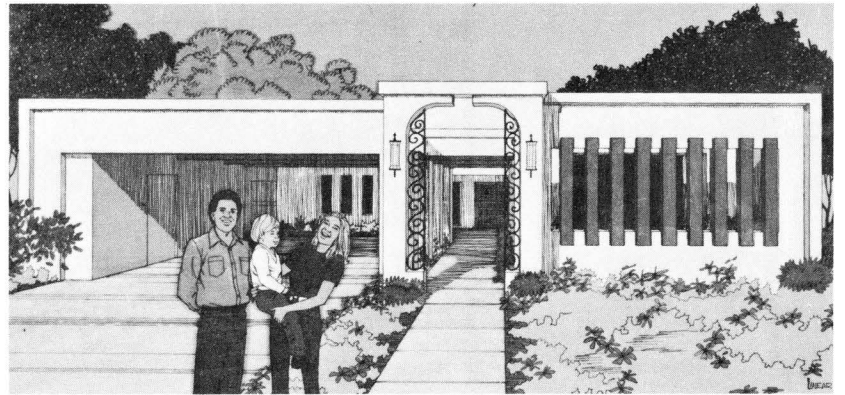
Nature comes indoors in this luxurious 3-bedroom 2-bath home. The lavish living room features cabinets, mirrors, a sky-high ceiling and a skylight that lets the sun bathe the inside planter below. Even the large beautiful baths have skylights! The master bedroom offers a

separate dressing area. There's closet space galore. What's more, this plan features a divine dining room and a family dining arrangement that opens onto a covered patio area. In every way, it's a "natural" for leisure living under the sun.



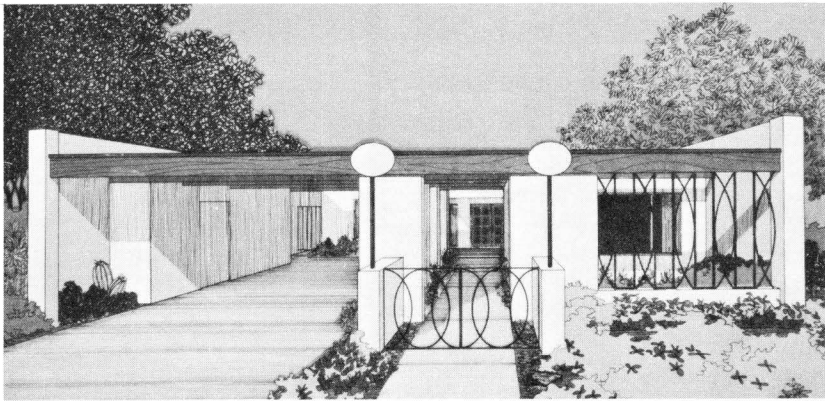
**A**

\$68800



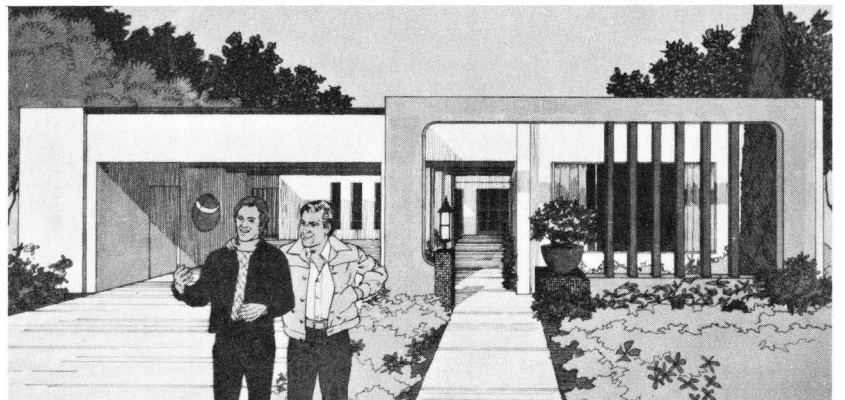
\$69100

**B**



**C**

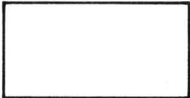
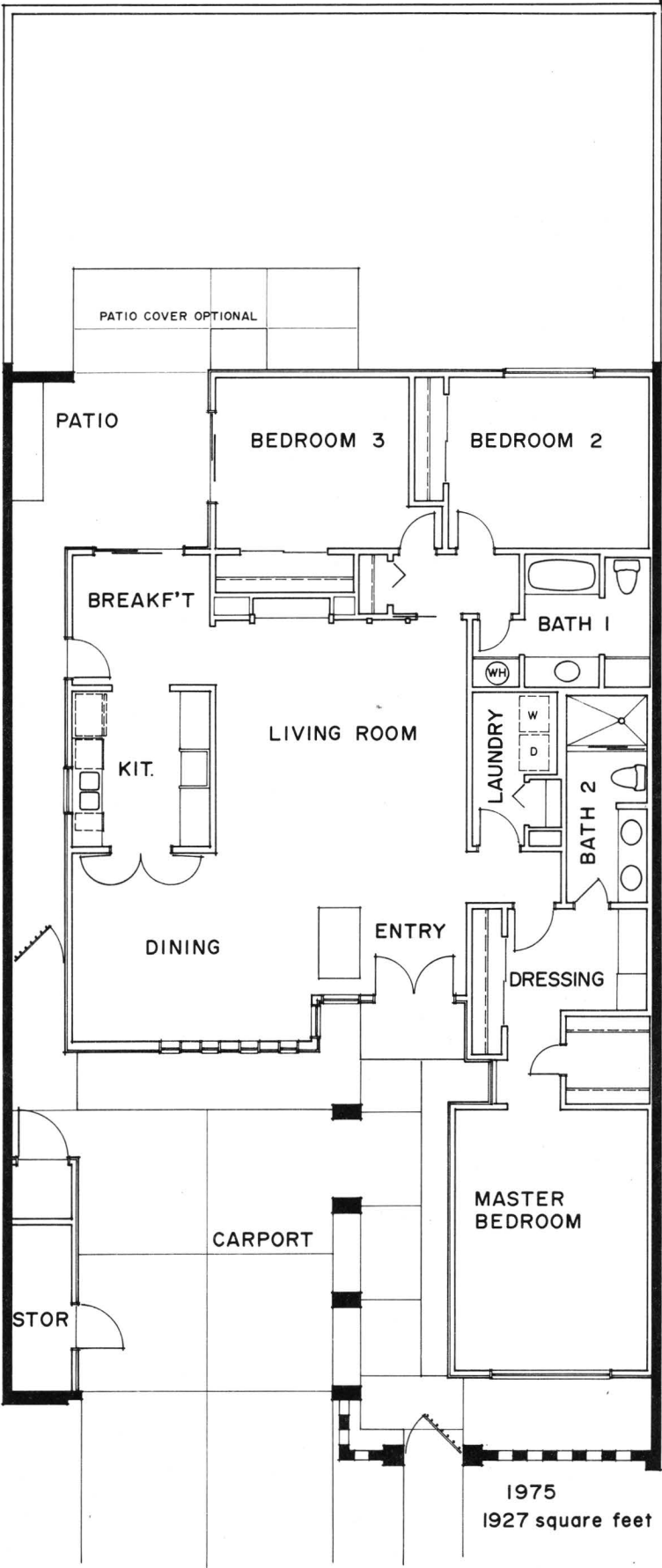
\$69500



\$69300

**D**

# Plan 6-S (1975)



Sands Scottsdale-Indian Bend & Pima Road-Scottsdale, Arizona

# Townhouses

# Plan 8-S (1975)

Feel the special air about this magnificent two-story manor. Dramatic doorways. An exotic entry hall. On the main floor, an amazingly large living room with double-height ceiling. Plenty of space for a formal dining room. A beautiful country kitchen that opens into a garden area. A marvelous master bedroom featuring a dressing area and a

bath with individual shower and tub. On the second level two spacious bedrooms separated by a bath and dressing area. And a unique activity room overlooks the living room below and opens onto an outside porch. Enchantingly exquisite!



**A** \$87700



\$88000 **B**



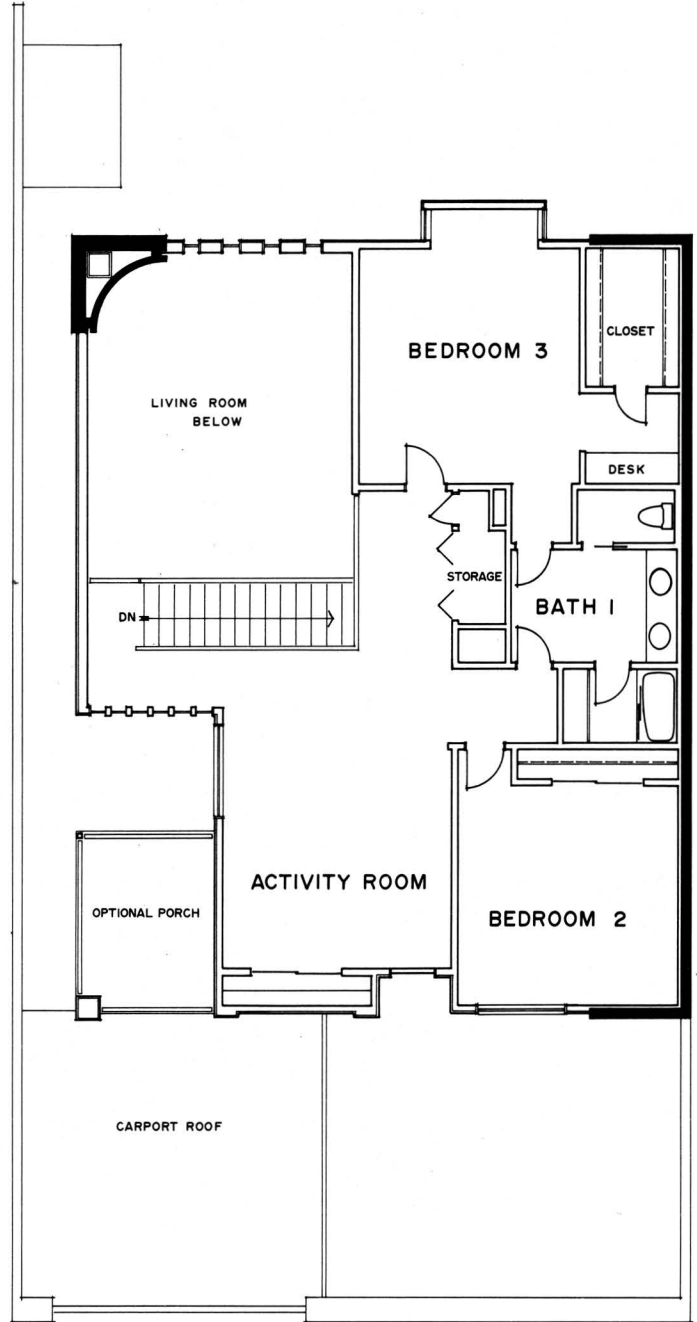
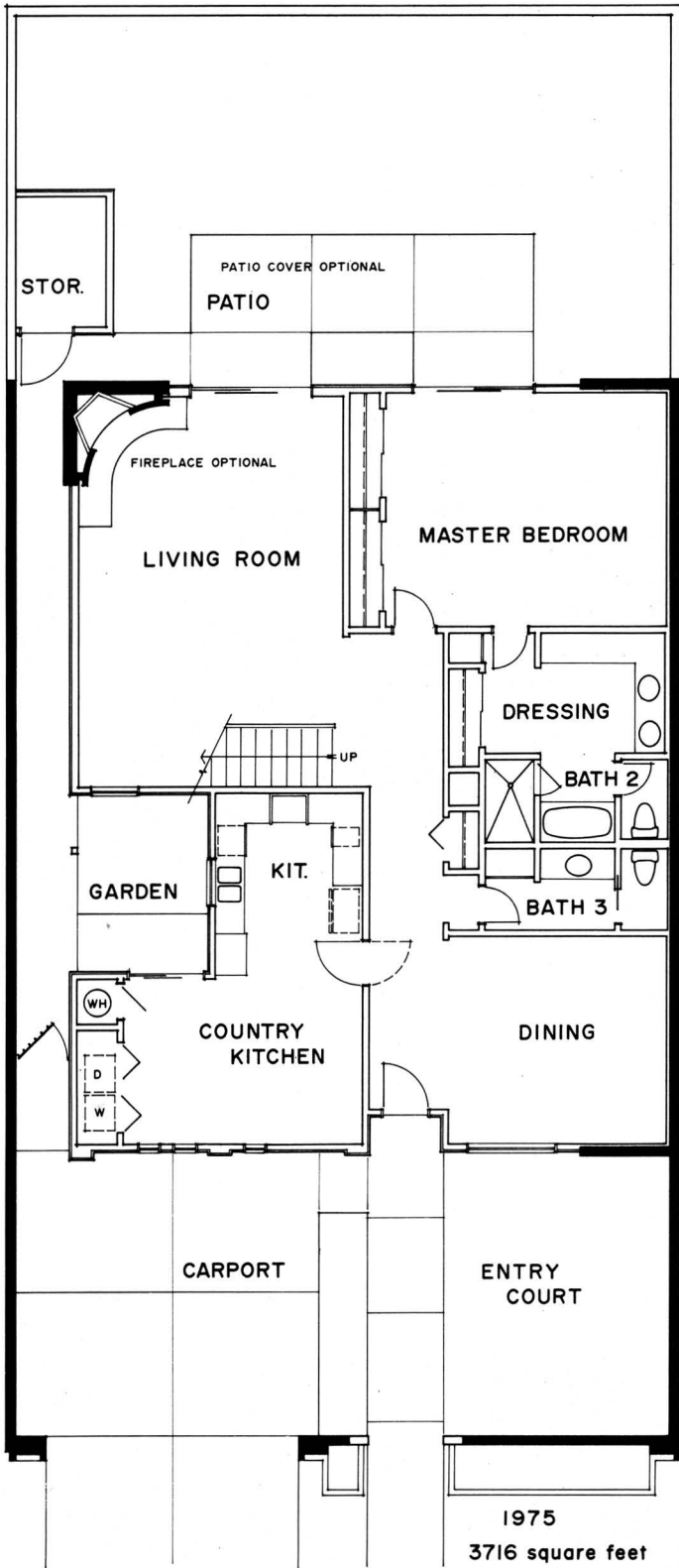
**C** \$88800



\$88600

**D**

# Plan 8-S (1975)



Sands Scottsdale-Indian Bend & Pima Road-Scottsdale, Arizona