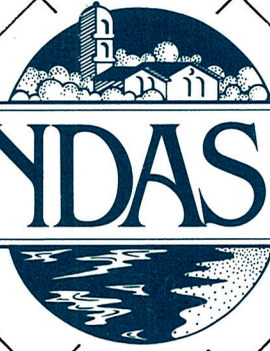
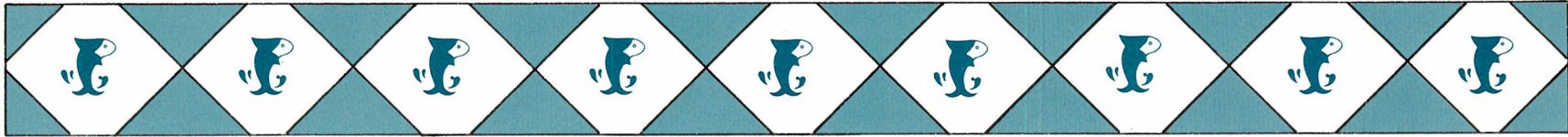


HACIENDAS del LAGO





HACIENDAS DEL LAGO AT SCOTTSDALE RANCH

Haciendas del Lago is proudly unveiled as the first development at Scottsdale Ranch, unquestionably the most exciting new planned community for Arizona homebuyers since McCormick Ranch and The Lakes.

Imagine beautiful homes nestled in the shadows of the McDowell Mountains. Think about the forthcoming pleasures. Winding trails and quaint bridges that lead to lovely lakes and restful parks. Pathways for hiking, bicycling and horseback riding. Convenient neighborhood shopping and residential offices that harmonize with everything else you see.

The lifestyle will remind you of California, but the setting and architecture are distinctively Southwestern.

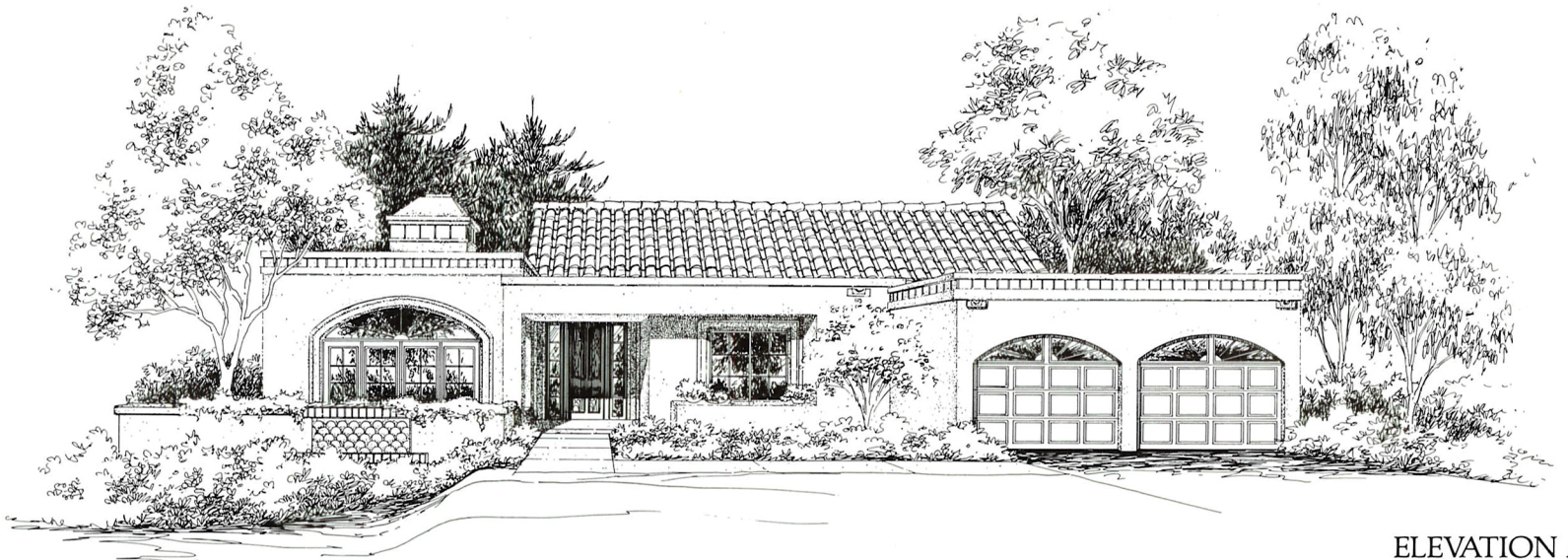
Haciendas del Lago is a residential enterprise created by Costain Limited, one of North America's most prestigious builders and developers. For a quarter century, Costain developments across the country have attracted quality-conscious buyers looking for a different kind of home in a preferred location.

A Costain home signifies the assurance of outstanding craftsmanship combined with a remarkable array of intriguing features.





LA BAHIA



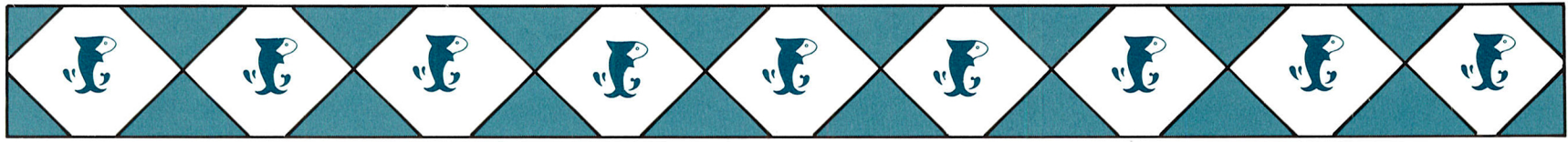
ELEVATION A



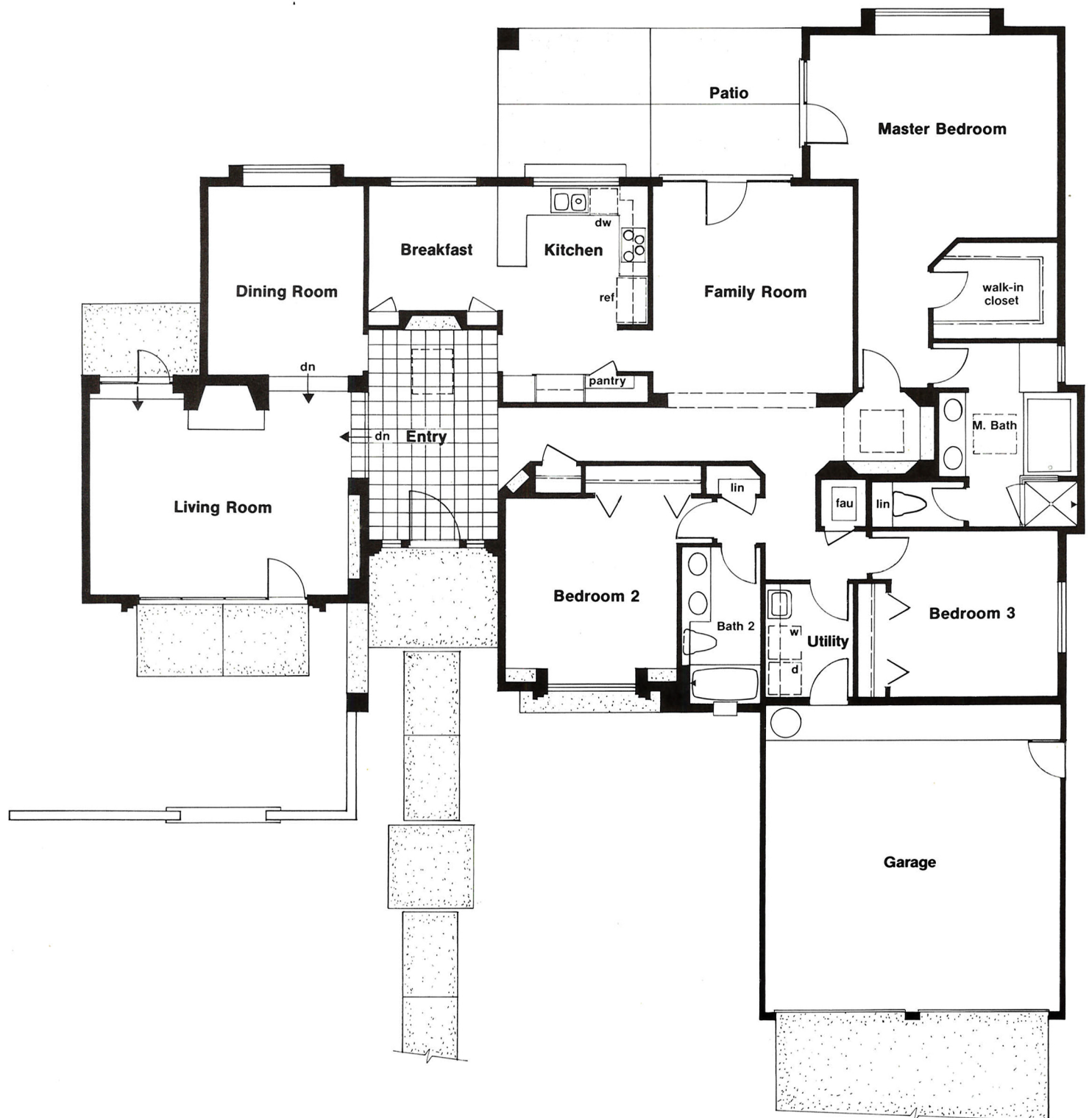
ELEVATION B
MODEL



ELEVATION C



What marvelously ingenious features. • Impressive grand entry with lighted niches and decorator's planter ledge. • Sunken living room beneath a 12-ft. coffered ceiling that captures the outdoors through handsome French doors and a broad transom window. Fireplace and built-in bookcase. • Charming china closets in the breakfast room. • The spaciousness of a vaulted-ceiling family room and exposed-beam hallway leading to a delightful clerestory foyer in the bedroom wing. • Master suite eye-catchers like bay window seating and custom-designed bath. • 2,846 sq. ft. with 2,375 sq. ft. of liveable space. 





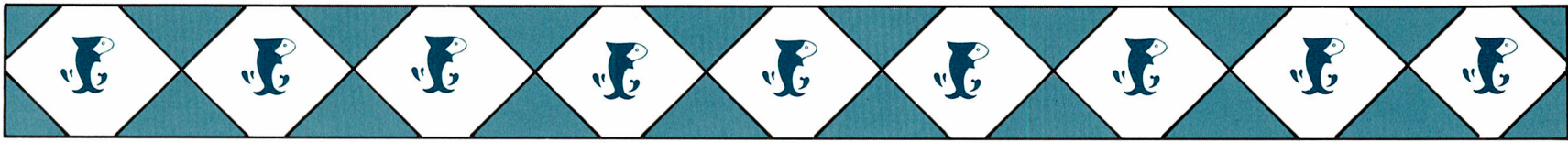
ELEVATION A
MODEL



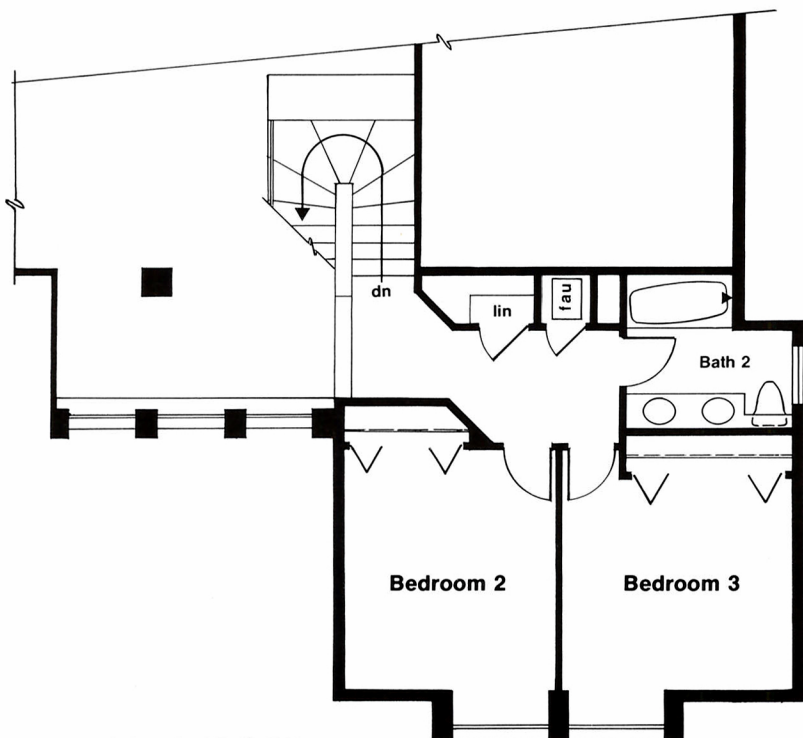
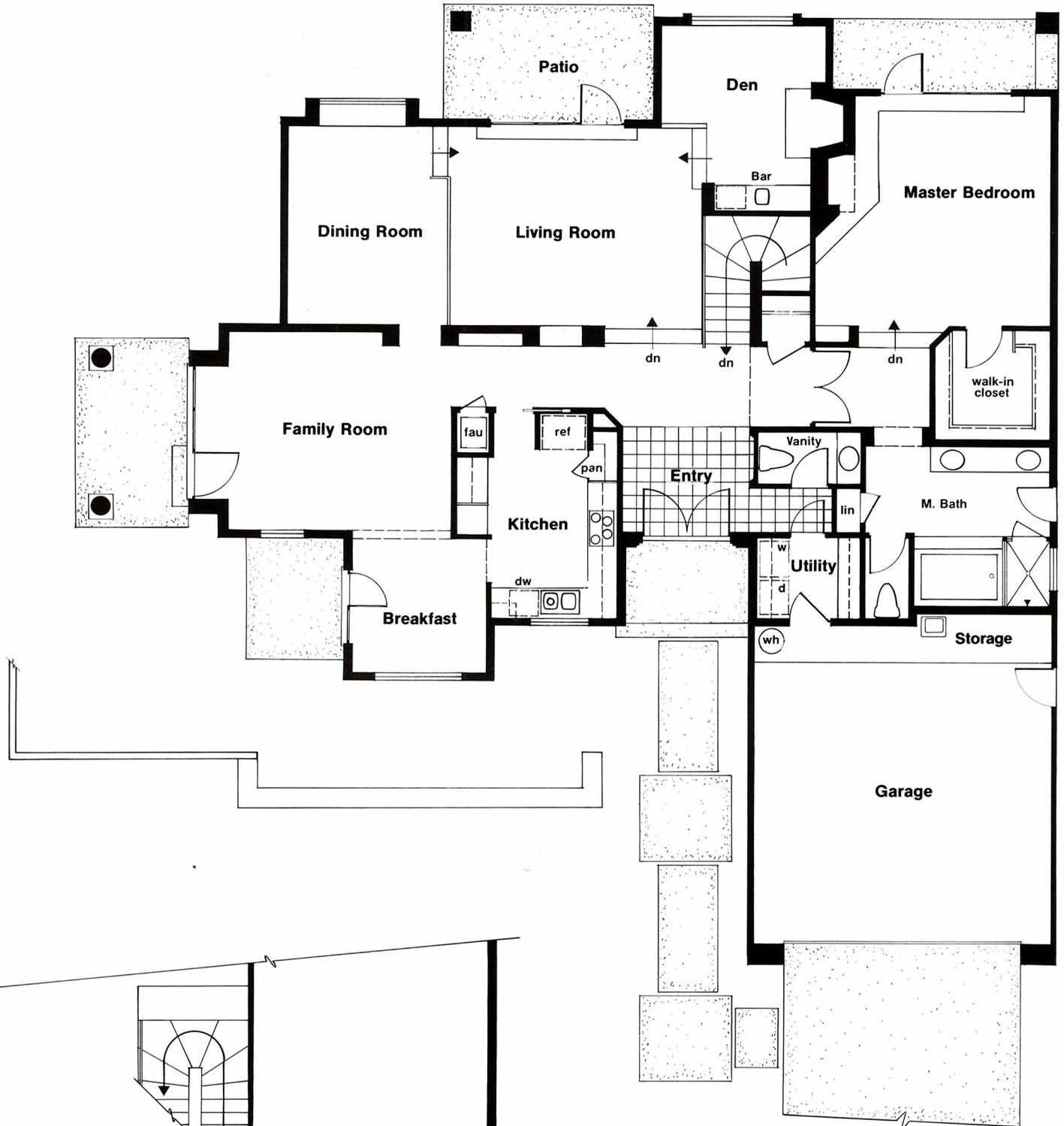
ELEVATION B



ELEVATION C



FIRST FLOOR

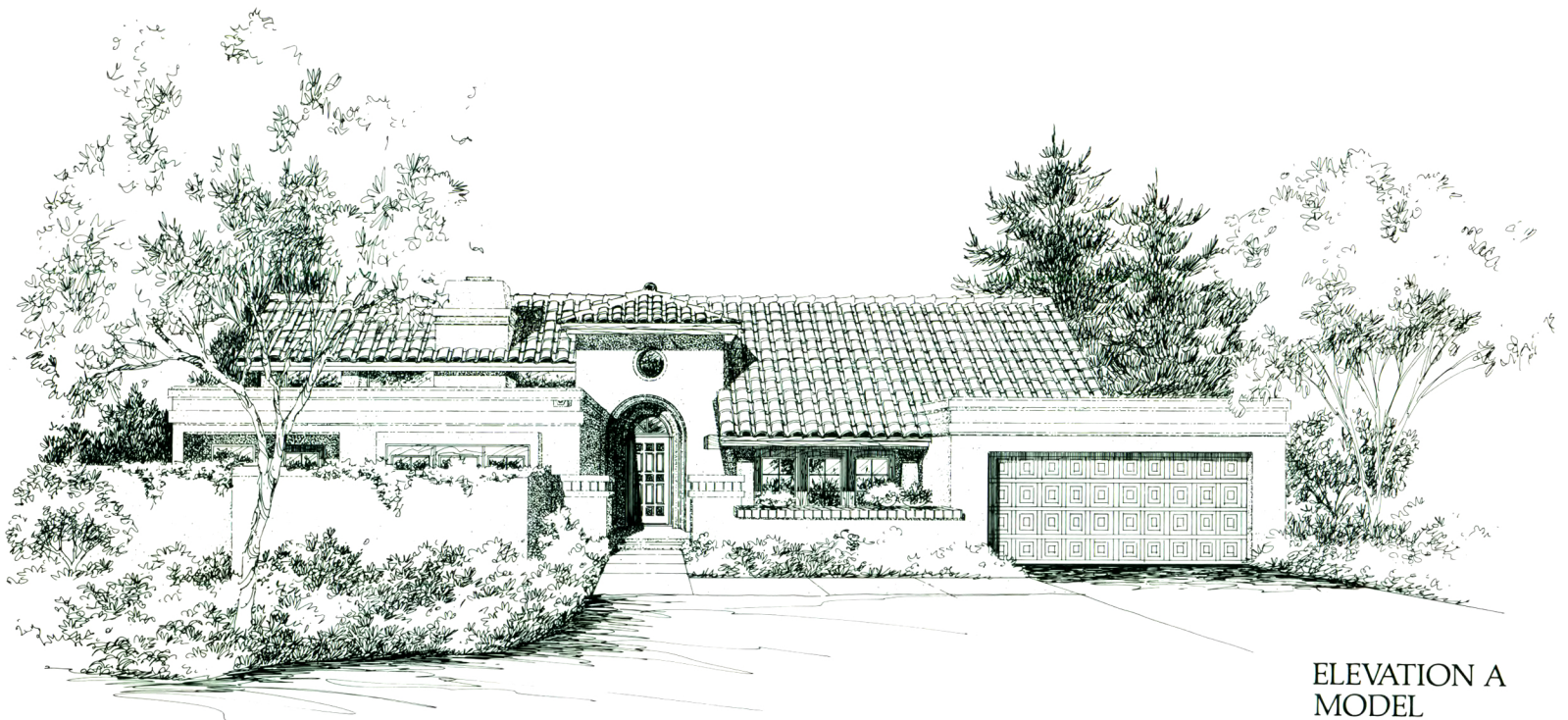


SECOND FLOOR

Tantalizing highlights of a magnificent two-story. • A towering breakfast gazebo with a 14-ft., floor-to-ceiling window to greet the morning. • Raised dining room overlooking the living room and cozy den with fireplace and recessed wet bar. • The majesty of vaulted ceilings and clerestory main foyer. • A second fireplace in the romantic master suite. • Thoughtful window seats for upstairs bedroom viewing. • 3,019 sq. ft. with 2,550 sq. ft. of liveable space.



LA MARINA



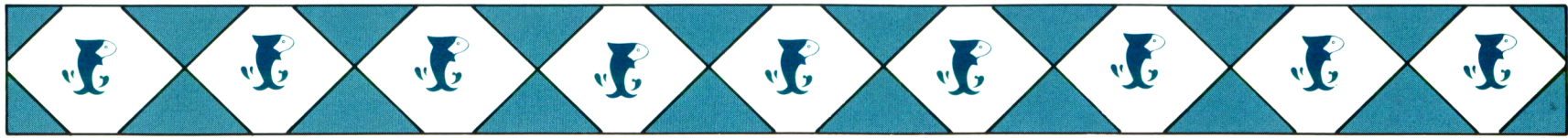
ELEVATION A
MODEL



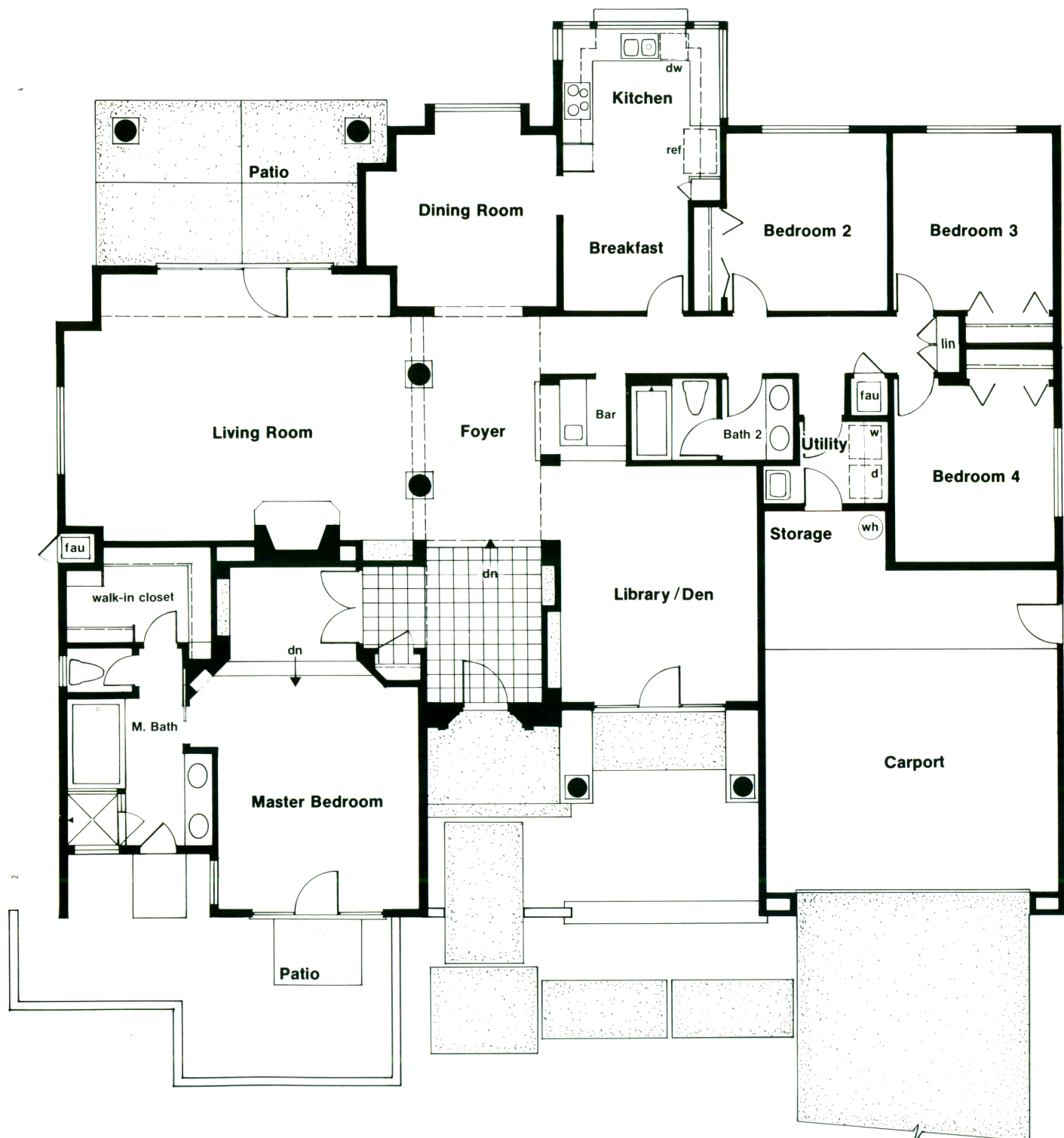
ELEVATION B



ELEVATION C



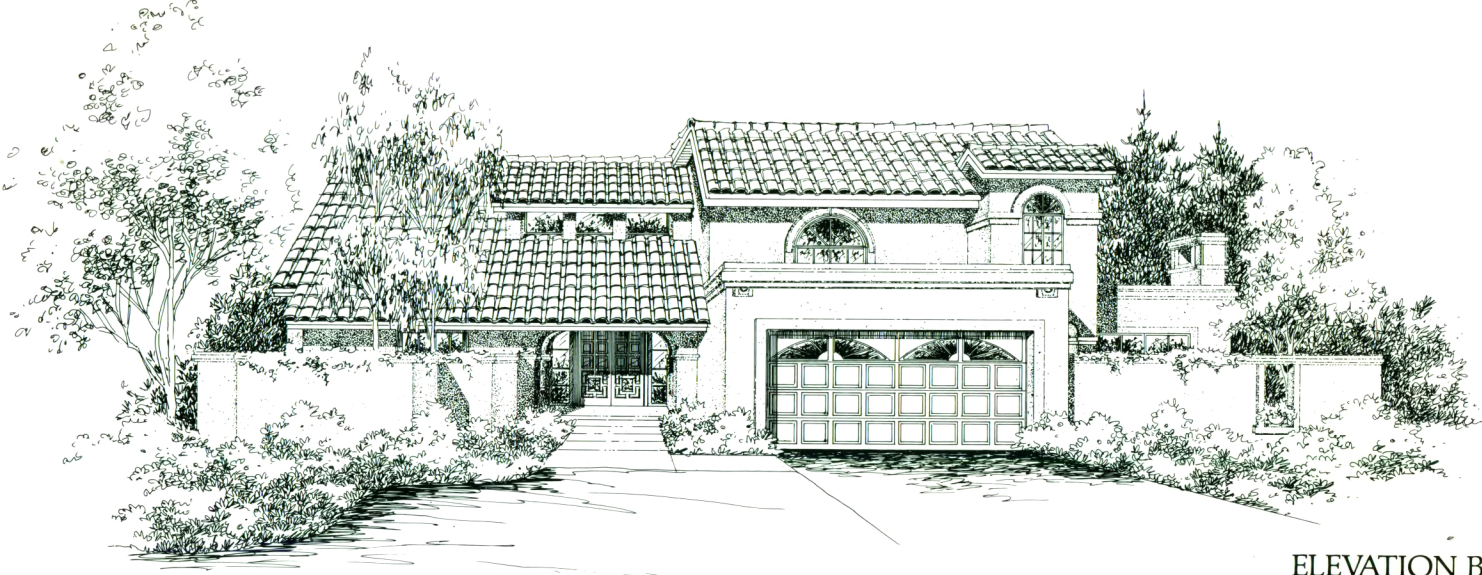
Endless wonders for luxurious entertaining • Dramatic formal entry and step-down foyer with elegant tilework and clerestory lighting that extends across a living room of regal dimensions. Spanish column grandeur, cathedral ceiling, fireplace and unique under-the-eaves window. • Separate library/den with private covered terrace. • Centrally-located wet bar convenient for social occasions. • Built in bookcases and dining room buffet. • The seldom seen look of wrap-around, counter-level kitchen windows. • A surprise of natural light in the hallway to the bedrooms. • Admirable master suite amenities like the elevated petite lounge, walk in closet, lavish bath and walled garden patio with suite or bath entry. • 3,159 sq. ft. with 2,650 sq. ft. of liveable space.



LA PLAYA



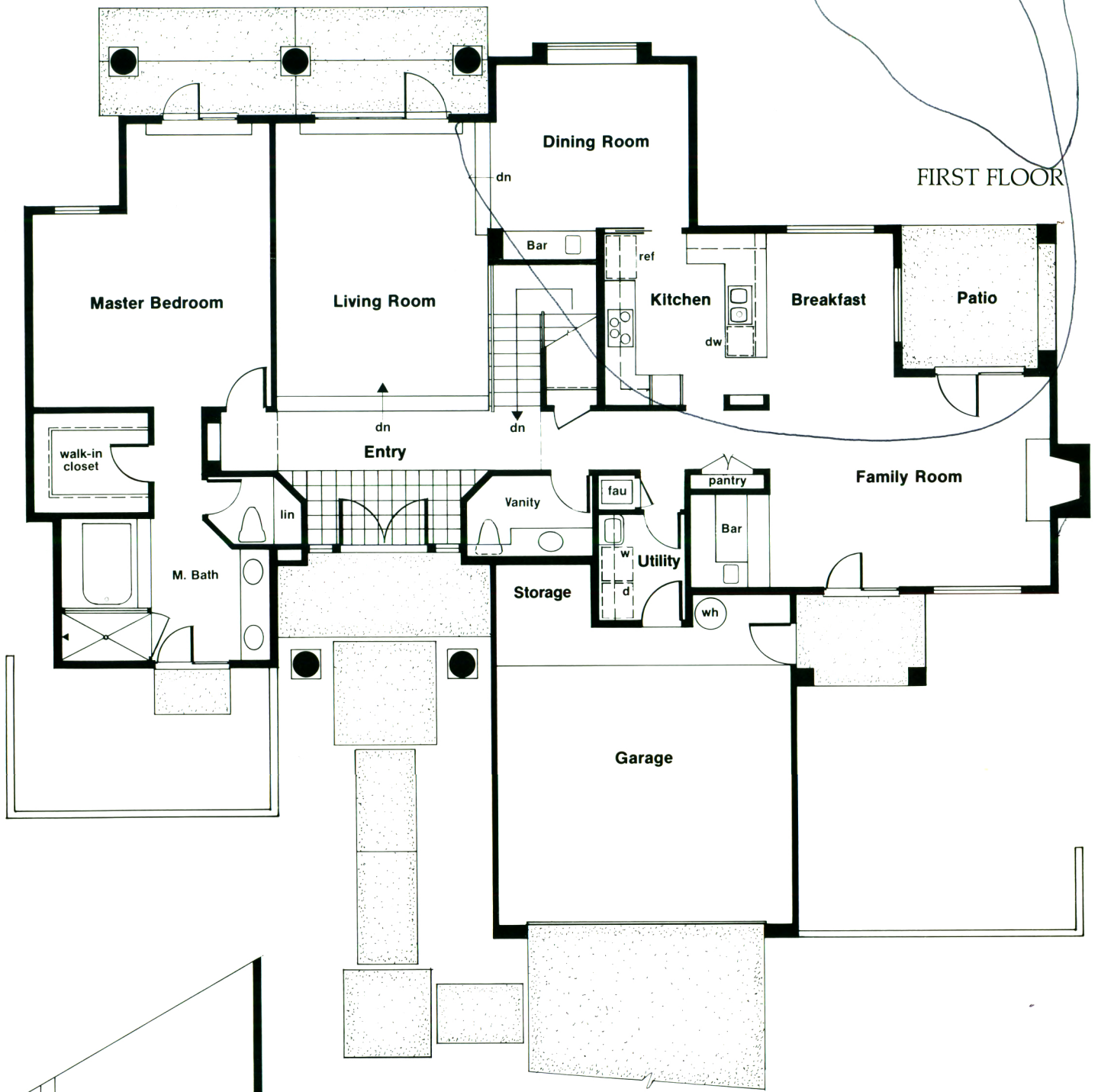
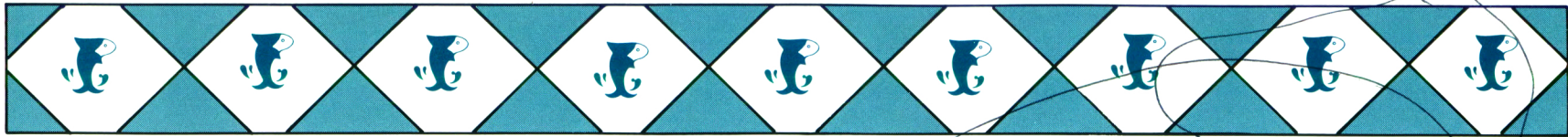
ELEVATION A
MODEL



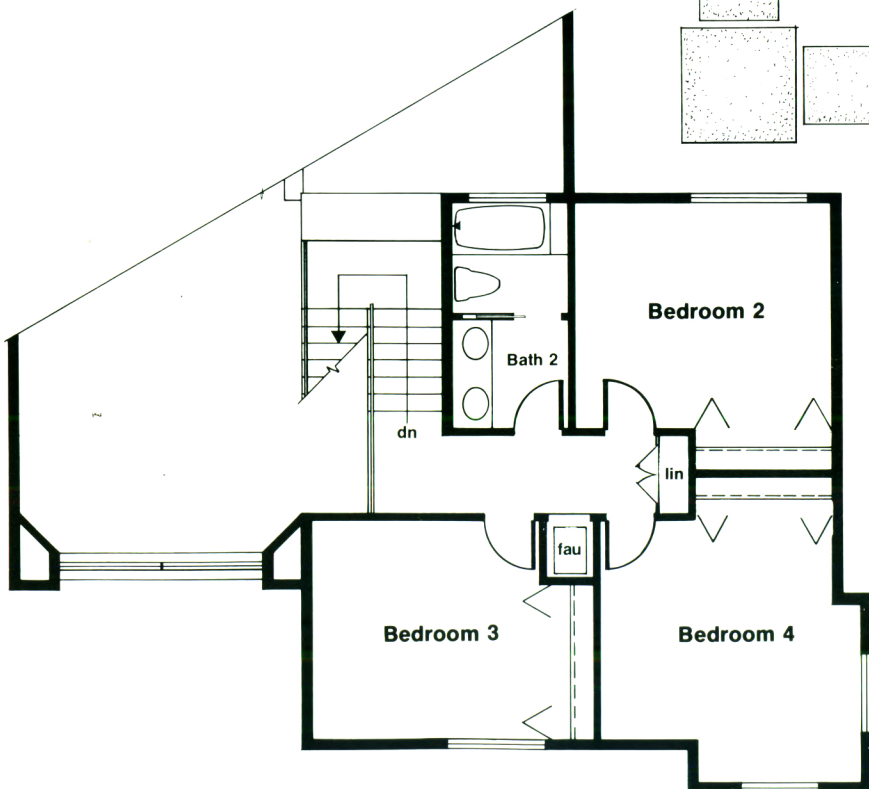
ELEVATION B



ELEVATION C



FIRST FLOOR



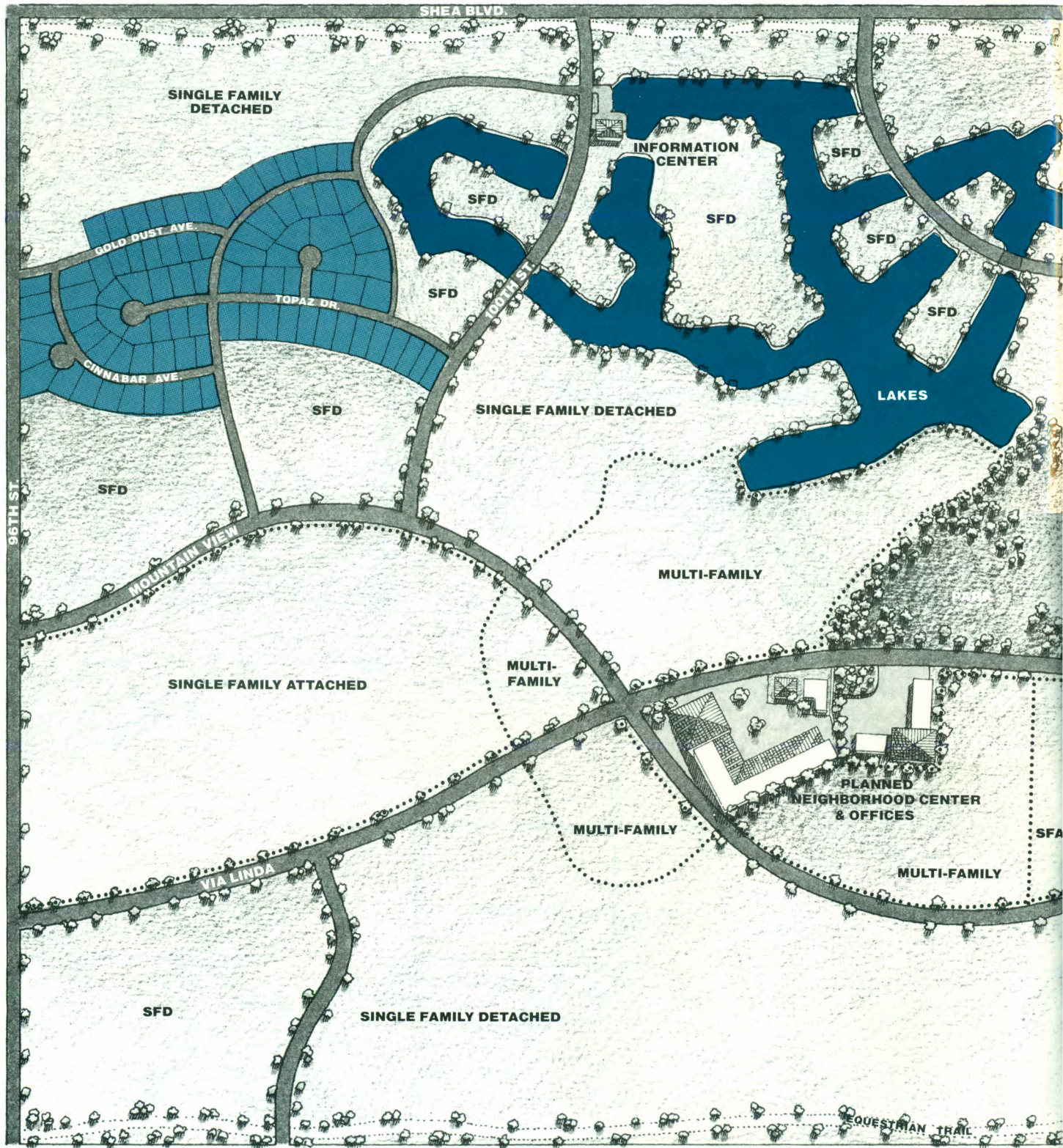
SECOND FLOOR

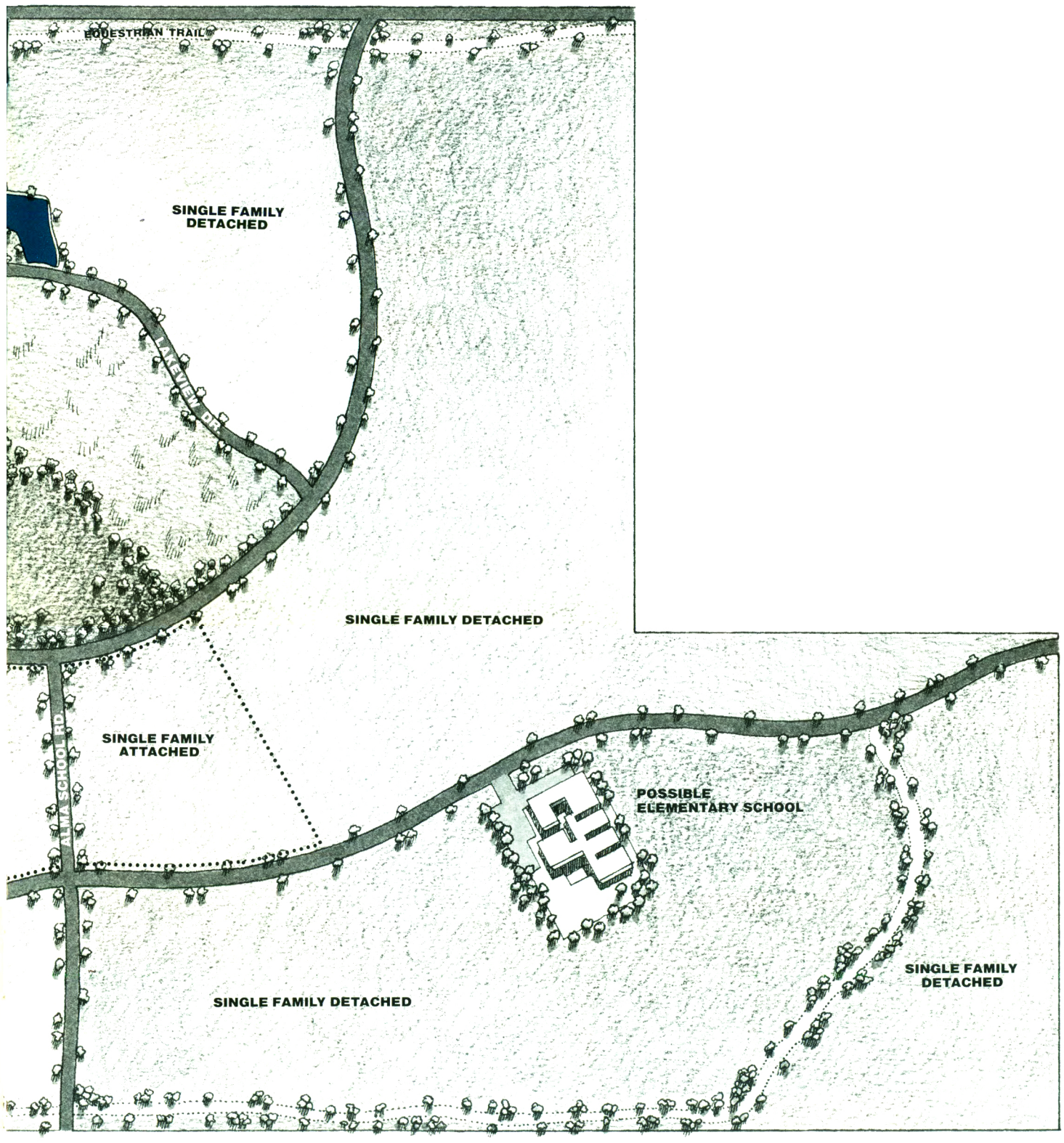
Memorable samplings of this two-story's charm. • Spectacular main foyer with clerestory skyview. • Vaulted-ceiling, sunken living room. • Built-in china cupboard and dining room bar. • Esthetically pleasing mid-entry garage. • The incomparable spaciousness of a 600-sq. ft. master suite. • Inviting family room with fireplace, large wet bar and enclosed verandas for year-round entertaining. • And, like all Haciendas del Lago homes...always those beautiful French doors to each shaded terrace and garden-walled patio, an abundance of natural light indoors, and superbly detailed craftsmanship. • 3,200 sq. ft. with 2,725 sq. ft. of liveable space.





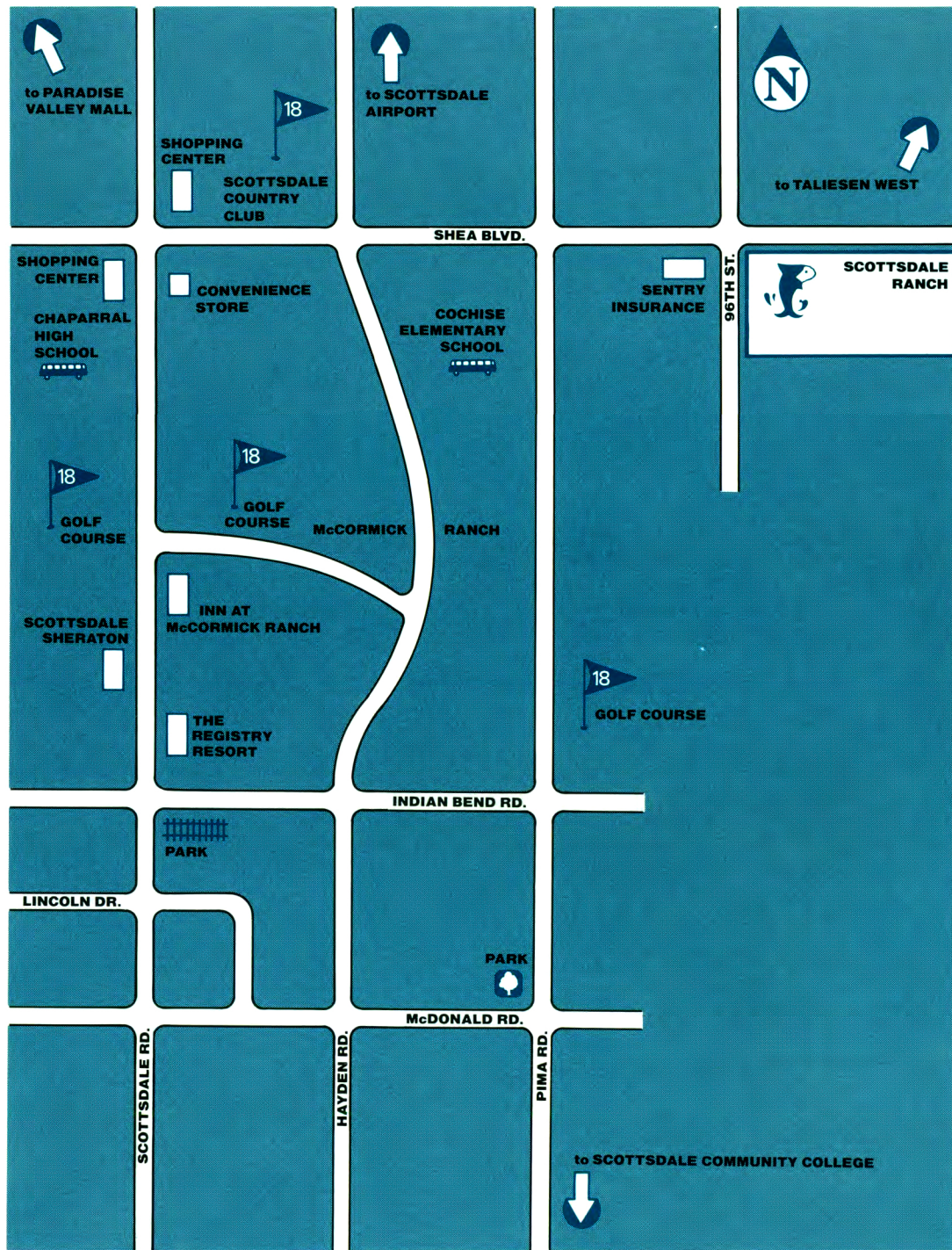
SCOTTSDALE RANCH

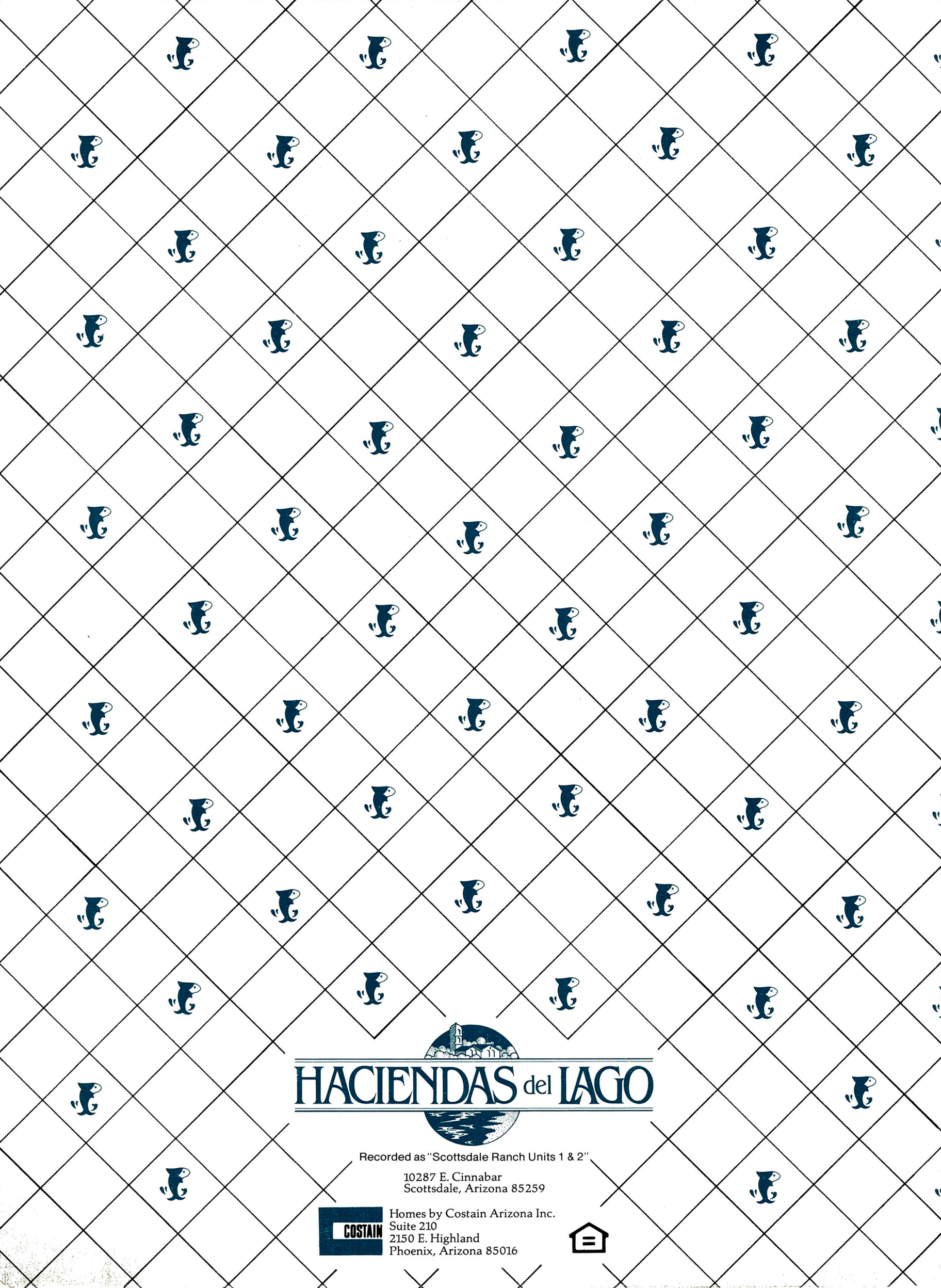






THE COMMUNITY






HACIENDAS del LAGO

Recorded as "Scottsdale Ranch Units 1 & 2"

10287 E. Cinnabar
Scottsdale, Arizona 85259



Homes by Costain Arizona Inc.
Suite 210
2150 E. Highland
Phoenix, Arizona 85016

